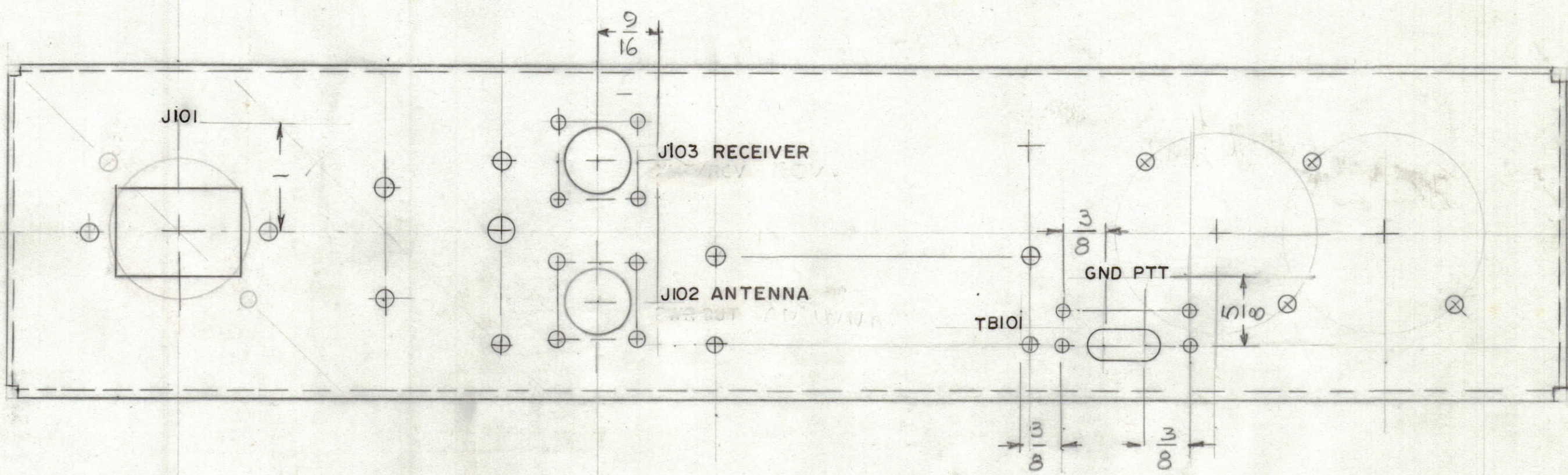


REVISIONS						
ZONE	LTR	DESCRIPTION	DATE	E.M.N.NO	DRAFT	CHKD APPD
	Ø	ORIGINAL RELEASE FOR PRODUCT.	3-19-91		G.D.L.	
	A	MARKING J103 WAS XMT/RCV J102 WAS PWR OUT	6-18-92		G.D.L.	



MARKING PROCESS:
AS PER TMC SPEC. 5727
ALL LETTERING TO BE 1/8
HIGH BLACK GOTHIC.

REF: M57241

1	PAL16	
1	PAL-15	
QTY / UNIT	MODEL USED ON	ASS'Y NO.
APPLICATION		
	CODE	
NOTICE TO PERSONS RECEIVING THIS DRAWING THE TECHNICAL MATERIEL CORPORATION claims proprietary right in the material disclosed hereon. This drawing is issued in confidence for engineering information only and may not be reproduced or used to manufacture anything shown hereon without permission from THE TECHNICAL MATERIEL CORPORATION to the user. This drawing is loaned for mutual assistance and is subject to recall at any time.		

UNLESS OTHERWISE SPECIFIED
DIMENSIONS ARE IN INCHES
AND INCLUDE CHEMICALLY APPLIED
OR PLATED FINISHES

TOLERANCES ON

DECIMALS	FRACTIONS
.X ± .05	± 1/64
.XX ± .01	ANGLES
.XXX ± .005	± 0° -30'

QTY. REQ.	ITEM	PART NO.	DESCRIPTION	SYMBOL
LIST OF MATERIAL				
FINAL APPROVAL MECH. DES. ELECT. DES. CHECKED DRAWN				
		DATE	THE TECHNICAL MATERIEL CORP. MAMARONECK, NEW YORK MARKING REAR CHASSIS	
		DATE		
		DATE		
		DATE		
SIZE	CODE IDENT.NO.	DWG NO.	ISSUE	
C	82679	LD 3172	A	
SCALE	1:1		SHEET	OF