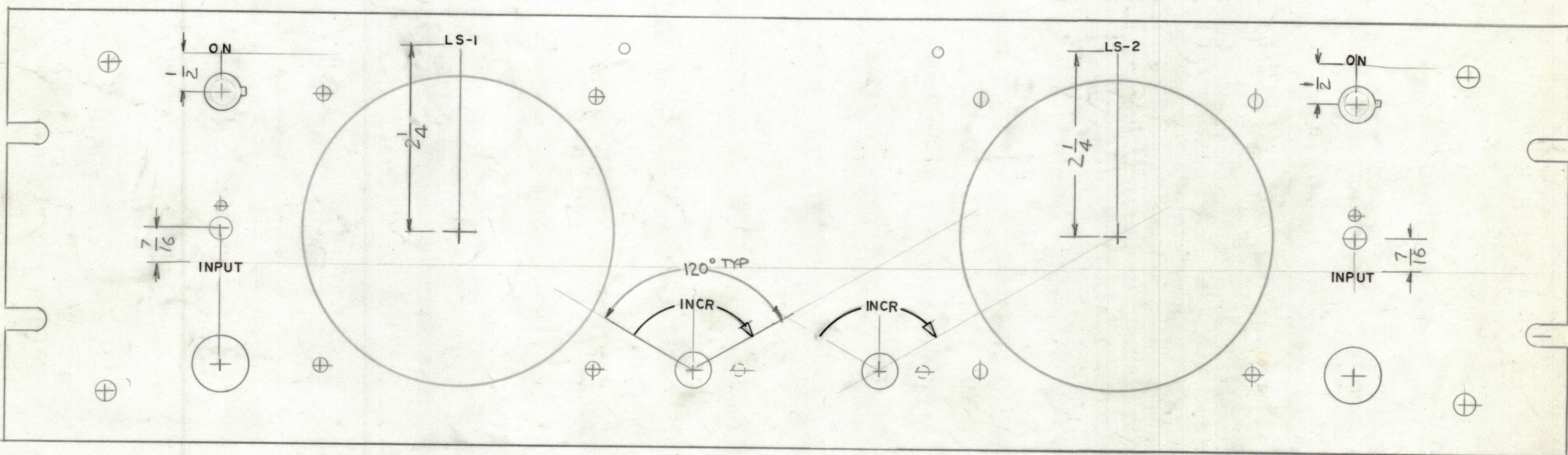


| REVISIONS |     |                         |         |          |        |           |
|-----------|-----|-------------------------|---------|----------|--------|-----------|
| ZONE      | LTR | DESCRIPTION             | DATE    | E.M.N.NO | DRAFT  | CHKD APPD |
|           |     | ORIG. RELEASE FOR PROD. | 9-24-85 |          | G.D.L. |           |



- 1-ENGRAVING AS PER TMC SPEC. 5566
- 2-UNLES OTHERWISE SPECIFIED
- 3-HEIGHT OF LETTERS 1/8, DEPTH OF STROKE .020  
WIDTH OF STROKE .020
- 4-ALL ARROWHEADS 3/32 X 5/32 BLACK FILLED
- 5-ALL LETTE GROUPS TO BE CENTERED ON HOLES

REF: MS 7178

UNLESS OTHERWISE SPECIFIED  
DIMENSIONS ARE IN INCHES  
AND INCLUDE CHEMICALLY APPLIED  
OR PLATED FINISHES.

TOLERANCES ON

|             |           |
|-------------|-----------|
| DECIMALS    | FRACTIONS |
| .X ± .05    | ± 1/64    |
| .XX ± .01   | ANGLES    |
| .XXX ± .005 | ± 0° .30' |

| QTY. REQ.  | ITEM       | PART NO.         | DESCRIPTION  | SYMBOL |
|--|------------|------------------|--------------|--------|
| LIST OF MATERIAL                                     |            |                  |              |        |
| THE TECHNICAL MATERIEL CORP.<br>MAMARONECK, NEW YORK |            |                  |              |        |
| MARKING FRONT PANEL<br>BSP-2D(5)                     |            |                  |              |        |
| FINAL APPROVAL <i>G.D.L.</i>                         |            | DATE 9/24/85     |              |        |
| MECH. DES.   |            | DATE             |              |        |
| ELECT. DES.  |            | DATE             |              |        |
| CHECKED  |            | DATE             |              |        |
| DRAWN G.D.L.   |            | DATE 9-24-81     |              |        |
| SIZE C   | CODE 82679 | IDENT.NO. LD3163 | DWG NO.      | ISSUE  |
| SCALE 1:1  |            |                  | SHEET 1 OF 2 |        |

| QTY / UNIT  | MODEL USED ON | ASS'Y NO. |
|---|---------------|-----------|
| APPLICATION   |               |           |
| CODE  |               |           |
| <small>NOTICE TO PERSONS RECEIVING THIS DRAWING</small><br><small>THE TECHNICAL MATERIEL CORPORATION claims proprietary right in the material disclosed hereon. This drawing is issued in confidence for engineering information only and may not be reproduced or used to manufacture anything shown hereon without permission from THE TECHNICAL MATERIEL CORPORATION to the user. This drawing is loaned for mutual assistance and is subject to recall at any time.</small> |               |           |