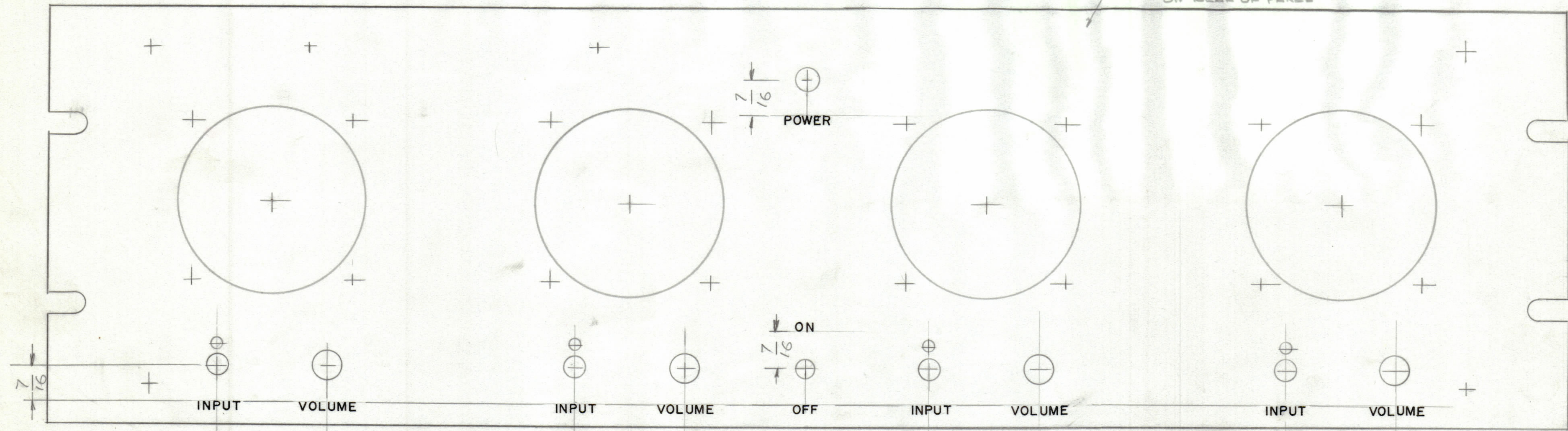


REVISIONS						
ZONE	LTR	DESCRIPTION	DATE	E.M.N.NO	DRAFT	CHKD APPD
		ORIGINAL RELEASE FOR PRODUCTION	9/18/84			JTB

STAMP TMC PNo-  
1/8 HIGH GOTHIC  
WITH LATEST REV.  
ON REAR OF PANEL



- 1- ENGRAVING AS PER TMC SPEC S566
- 2- UNLESS OTHERWISE SPECIFIED:  
LETTERS 1/8 HIGH GOTHIC BLACK FILLED -
- 3- HEIGHT OF LETTERS 1/8, DEPTH OF STROKE .020  
WIDTH OF STROKE .020

REF: MS7153

UNLESS OTHERWISE SPECIFIED  
DIMENSIONS ARE IN INCHES  
AND INCLUDE CHEMICALLY APPLIED  
OR PLATED FINISHES

TOLERANCES ON

DECIMALS	FRACTIONS
.X ± .05	± 1/64
.XX ± .01	ANGLES
.XXX ± .005	± 0° -30'

QTY. REQ.	ITEM	PART NO.	DESCRIPTION	SYMBOL
LIST OF MATERIAL				
THE TECHNICAL MATERIEL CORP. MAMARONECK, NEW YORK				
MARKING FRONT PANEL BSP-7(4) 3S				
FINAL APPROVAL GDB		DATE 9/18/84		
MECH. DES.		DATE		
ELECT. DES.		DATE		
CHECKED		DATE		
DRAWN G.D.L.		DATE 9-13-84		
SIZE C	CODE IDENT. NO. 82679	DWG NO. LD3158	ISSUE ①	
SCALE 1:1	SHEET OF			

QTY / UNIT	MODEL USED ON	ASS'Y NO.
	BSP-7(4) 3S	
APPLICATION		
CODE		
NOTICE TO PERSONS RECEIVING THIS DRAWING THE TECHNICAL MATERIEL CORPORATION claims proprietary right in the material disclosed hereon. This drawing is issued in confidence for engineering information only and may not be reproduced or used to manufacture anything shown hereon without permission from THE TECHNICAL MATERIEL CORPORATION to the user. This drawing is loaned for mutual assistance and is subject to recall at any time.		