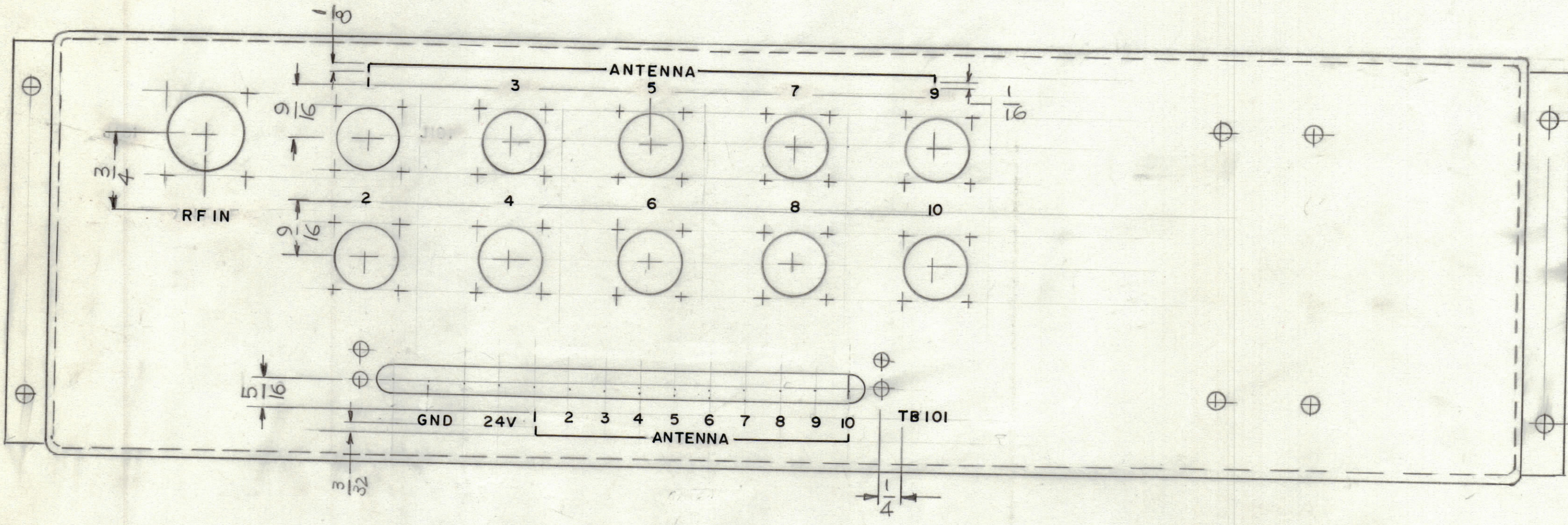


REVISIONS						
ZONE	LTR	DESCRIPTION	DATE	E.M.N.NO	DRAFT	CHKD APPD
	Ø	ORIGINAL RELEASE FOR PROD.	1-4-83		G.D.L	



MARKING PROCESS: AS PER TMC SPECIFICATION S727  
 LETTERING: 1/8 HIGH BLACK GOTHIC, LOCATED AS SHOWN

REF: MS7075

1	HFTR-1K/J2B	AX 806
QTY / UNIT	MODEL USED ON	ASS'Y NO.
APPLICATION		
CODE		

UNLESS OTHERWISE SPECIFIED  
 DIMENSIONS ARE IN INCHES  
 AND INCLUDE CHEMICALLY APPLIED  
 OR PLATED FINISHES

TOLERANCES ON

DECIMALS	FRACTIONS
.X ± .05	± 1/64
.XX ± .01	ANGLES
.XXX ± .005	± 0° -30'

QTY. REQ.	ITEM	PART NO.	DESCRIPTION	SYMBOL	
ENG. S. DEMARCO LIST OF MATERIAL					
FINAL APPROVAL	DATE	THE TECHNICAL MATERIEL CORP. MAMARONECK, NEW YORK			
MECH. DES. G.D.L	DATE	MARKING, CHASSIS REAR			
ELECT. DES.	DATE				
CHECKED	DATE				
DRAWN G.D.L	DATE 3-18-82				
MATERIAL	FINISH	SIZE	CODE IDENT.NO.	DWG NO.	ISSUE
		C	82679	LD 3133	Ø
SCALE 1:1			SHEET	OF	

NOTICE TO PERSONS RECEIVING THIS DRAWING  
 THE TECHNICAL MATERIEL CORPORATION claims proprietary right in the material disclosed hereon.  
 This drawing is issued in confidence for engineering information only and may not be reproduced or used  
 to manufacture anything shown hereon without permission from THE TECHNICAL MATERIEL CORPORATION  
 to the user. This drawing is loaned for mutual assistance and is subject to recall at any time.