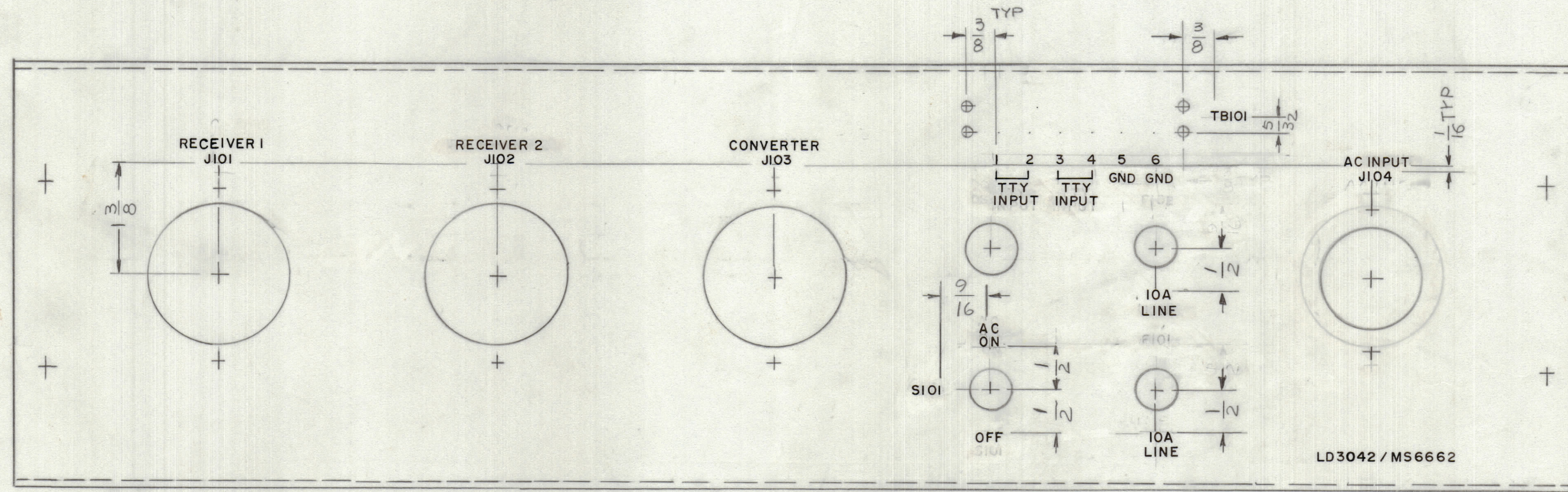


REVISIONS							
E.M.N.O	DRAFT	CHKD	ZONE	LTR	DESCRIPTION	DATE	APPROVED
					ORIGINAL RELEASE	1-10-77	*



TTY
INPUT

MARKING PROCESS: AS PER TMC SPECIFICATION S727
 LETTERING: 1/8 HIGH BLACK GOTHIC, LOCATED AS SHOWN

REF: MS6662

QTY / UNIT	MODEL USED ON	ASS'Y NO.
	AX 5207	SYM 5204
APPLICATION		
CODE		
MATERIAL		
FINISH		

QTY. REQ.	ITEM	PART NO.	DESCRIPTION	SYMBOL
			LIST OF MATERIAL	
			FINAL APPROVAL	DATE
			MECH. DES.	DATE
			ELECT. DES.	DATE
			CHECKED	DATE
			DRAWN	DATE

SIZE	CODE IDENT NO.	DWG NO.	ISSUE
D	82679	LD3042	1
SCALE		SHEET OF	

NOTICE TO PERSONS RECEIVING THIS DRAWING
 THE TECHNICAL MATERIEL CORPORATION claims proprietary right in the material disclosed hereon. This drawing is issued in confidence for engineering information only and may not be reproduced or used to manufacture anything shown hereon without permission from THE TECHNICAL MATERIEL CORPORATION to the user. This drawing is loaned for mutual assistance and is subject to recall at any time.