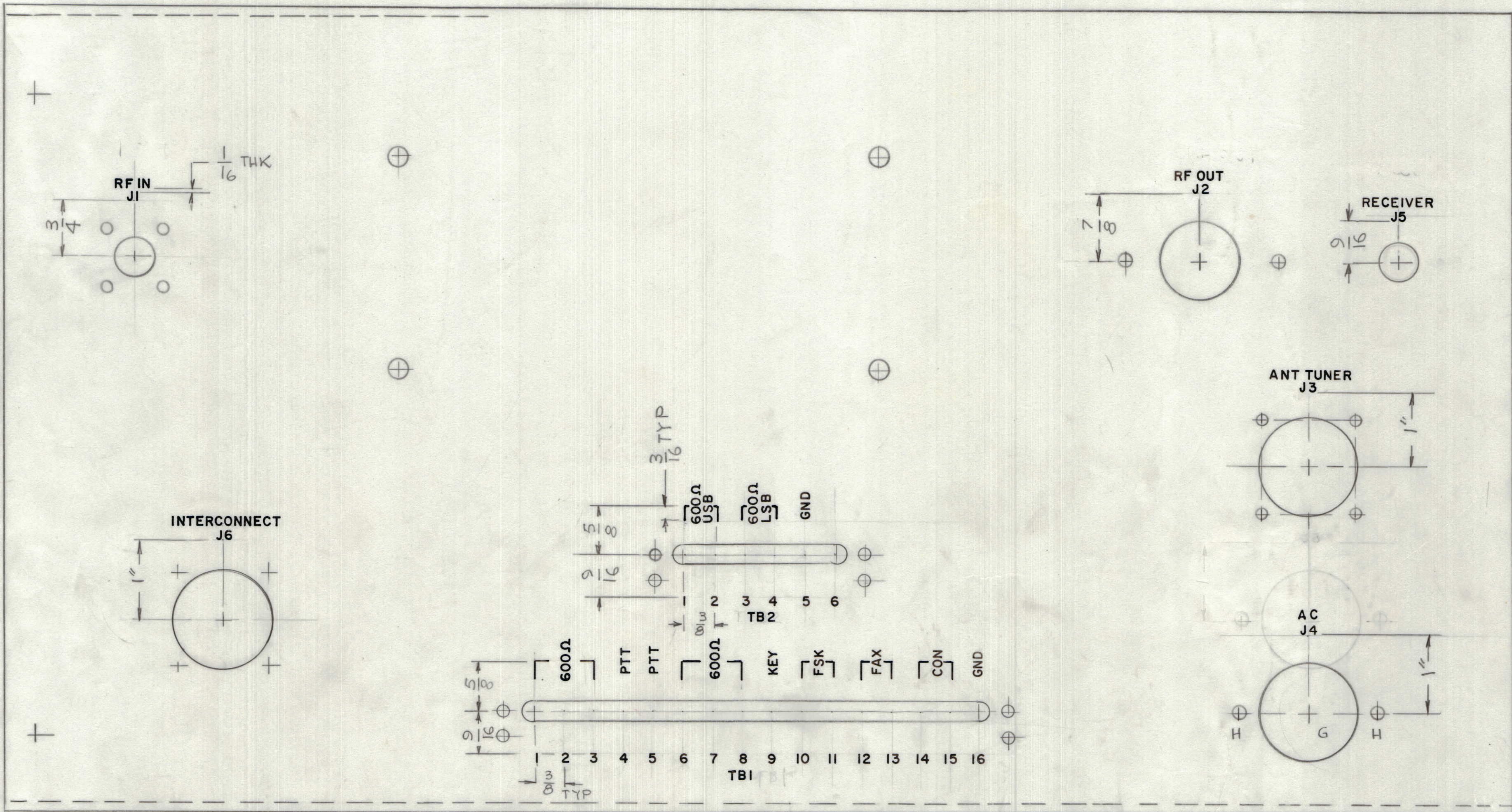


REVISIONS							
E.M.N.	DRAFT	CHKD	ZONE	LTR	DESCRIPTION	DATE	APPROVED
	CL				ORIGINAL RELEASE FOR PRODUCTION	7/15/75	



MARKING PROCESS: AS PER TMC SPECIFICATION S727
 LETTERING: 1/8 HIGH BLACK GOTHIC, LOCATED AS SHOWN

REF: MS6637

QTY / UNIT	MODEL USED ON	ASS'Y NO.
1	AX5202	

APPLICATION
 CODE
 NOTICE TO PERSONS RECEIVING THIS DRAWING
 THE TECHNICAL MATERIEL CORPORATION claims proprietary right in the material disclosed hereon. This drawing is issued in confidence for engineering information only and may not be reproduced or used to manufacture anything shown hereon without permission from THE TECHNICAL MATERIEL CORPORATION to the user. This drawing is loaned for mutual assistance and is subject to recall at any time.

DECIMALS	FRACTIONS
.X ± .05	± 1/64
.XX ± .01	ANGLES
.XXX ± .005	± 0° -30'

MATERIAL
 FINISH

QTY. REQ.	ITEM	PART NO.	DESCRIPTION	SYMBOL
LIST OF MATERIAL				
THE TECHNICAL MATERIEL CORP. MAMARONECK, NEW YORK				
MARKING REAR PANEL INTERFACE				
SIZE	CODE IDENT NO.	DWG NO.	ISSUE	
D	82679	LD 3040	0	
SCALE				SHEET OF