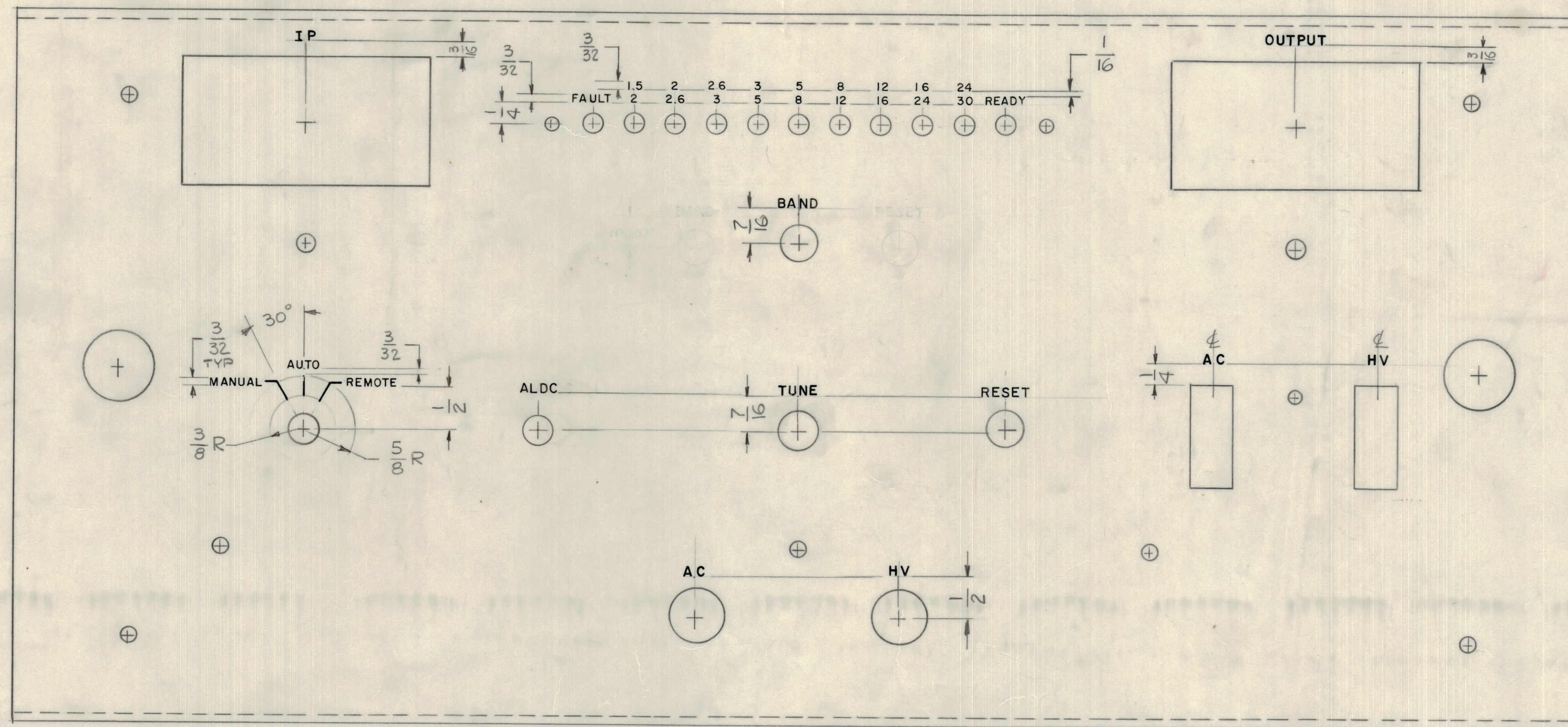


REVISIONS							
E.M.N.O	DRAFT	CHKD	ZONE	LTR	DESCRIPTION	DATE	APPROVED
				X1	MARKING BAND & RESET RELOCATED NOTES ADDED	5-19-76	
				X2	ALDC MARKING ADD.	7-16-76	
				X3	REVS X1 & X2 WERE 'A' #8 - MARKING ALDC RELOCATED		
	CL			Ø	ORIGINAL RELEASE FOR PRODUCTION	3-13-75	



SILK SCREEN OR ENGRAVING TO BE USED,
AS PER JOB REQUIREMENT

UNLESS OTHERWISE SPECIFIED -

1. ALL LETTERING GROUP TO BE CENTERED ON HOLES.
2. ENGRAVING TO BE 1/8 HIGH GOTHIC.
3. ALL LETTERING & LINEWORK TO BE WHITE FILLED
4. ALL ENGRAVING AS PER TMC SPEC. 5566

HEIGHT OF LETTER	DEPTH OF STROKE	WIDTH OF STROKE
1/8	.010	.020
3/32	.010	.015
LINES	.010	.015

REF: MS 6535

QTY / UNIT	MODEL USED ON	ASS'Y NO.
	TMA-1K	BMA-521
APPLICATION		
CODE		

NOTICE TO PERSONS RECEIVING THIS DRAWING
THE TECHNICAL MATERIEL CORPORATION claims proprietary right in the material disclosed hereon. This drawing is issued in confidence for engineering information only and may not be reproduced or used to manufacture anything shown hereon without permission from THE TECHNICAL MATERIEL CORPORATION to the user. This drawing is loaned for mutual assistance and is subject to recall at any time.

QTY. REQ.	ITEM	PART NO.	DESCRIPTION	SYMBOL
LIST OF MATERIAL				
FINAL APPROVAL		DATE	THE TECHNICAL MATERIEL CORP. MAMARONECK, NEW YORK	
MECH. DES.		DATE		
ELECT. DES.		DATE		
CHECKED		DATE		
DRAWN		DATE	MARKING PANEL FRONT	
MATERIAL			SIZE	CODE IDENT NO. DWG NO.
FINISH			D	82679 LD 3023
			SCALE	SHEET OF