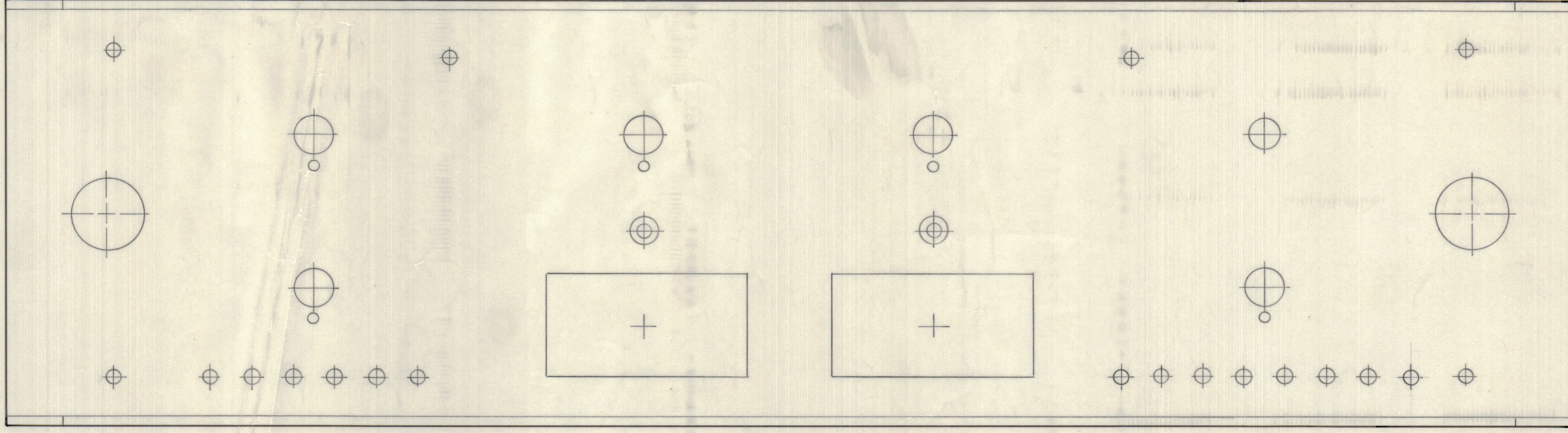
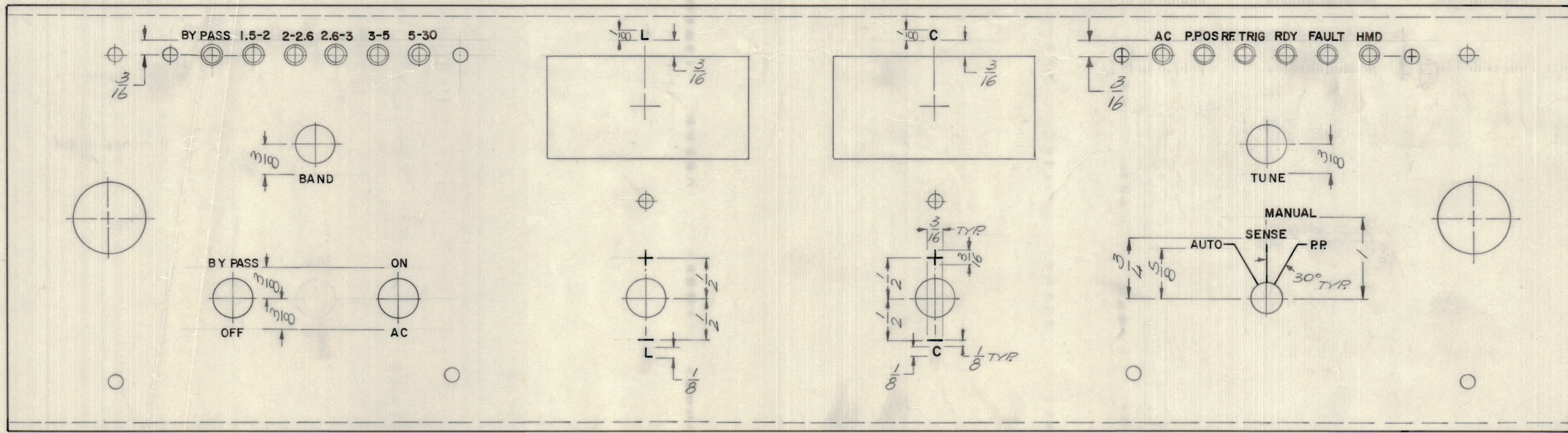


REVISIONS						
E.M.N.O	DRAFT	CHKD	ZONE	LTR	DATE	APPROVED
	DV			Ø	11/30/73	ORIGINAL RELEASE FOR PRODUCTION



INTERIOR



EXTERIOR

MARKING PROCESS: AS PER TMC SPECIFICATION S727
 UNLESS OTHERWISE SPECIFIED:
 LETTERING: 3/32 HIGH BLACK GOTHIC, LOCATED AS SHOWN

ATSA-3		
QTY / UNIT	MODEL USED ON	ASSY NO.
APPLICATION		
CODE		

NOTICE TO PERSONS RECEIVING THIS DRAWING
 THE TECHNICAL MATERIEL CORPORATION claims proprietary right in the material disclosed hereon. This drawing is issued in confidence for engineering information only and may not be reproduced or used to manufacture anything shown hereon without permission from THE TECHNICAL MATERIEL CORPORATION to the user. This drawing is loaned for mutual assistance and is subject to recall at any time.

QTY. REQ.	ITEM	PART NO.	DESCRIPTION	SYMBOL
REF MS 6449				
F. BUDETTI				
LIST OF MATERIAL				
FINAL APPROVAL		DATE	THE TECHNICAL MATERIEL CORP.	
MECH. DES.		DATE	MAMARONECK, NEW YORK	
ELECT. DES.		DATE	MARKING, PANEL FRONT	
CHECKED		DATE	SIZE CODE IDENT NO. DWG NO.	
DRAWN		DATE	D 82679 LD 3005	
MATERIAL			SCALE 1:1	ISSUE
FINISH			SHEET	OF

LD 3005