

LD3005

4

3

2

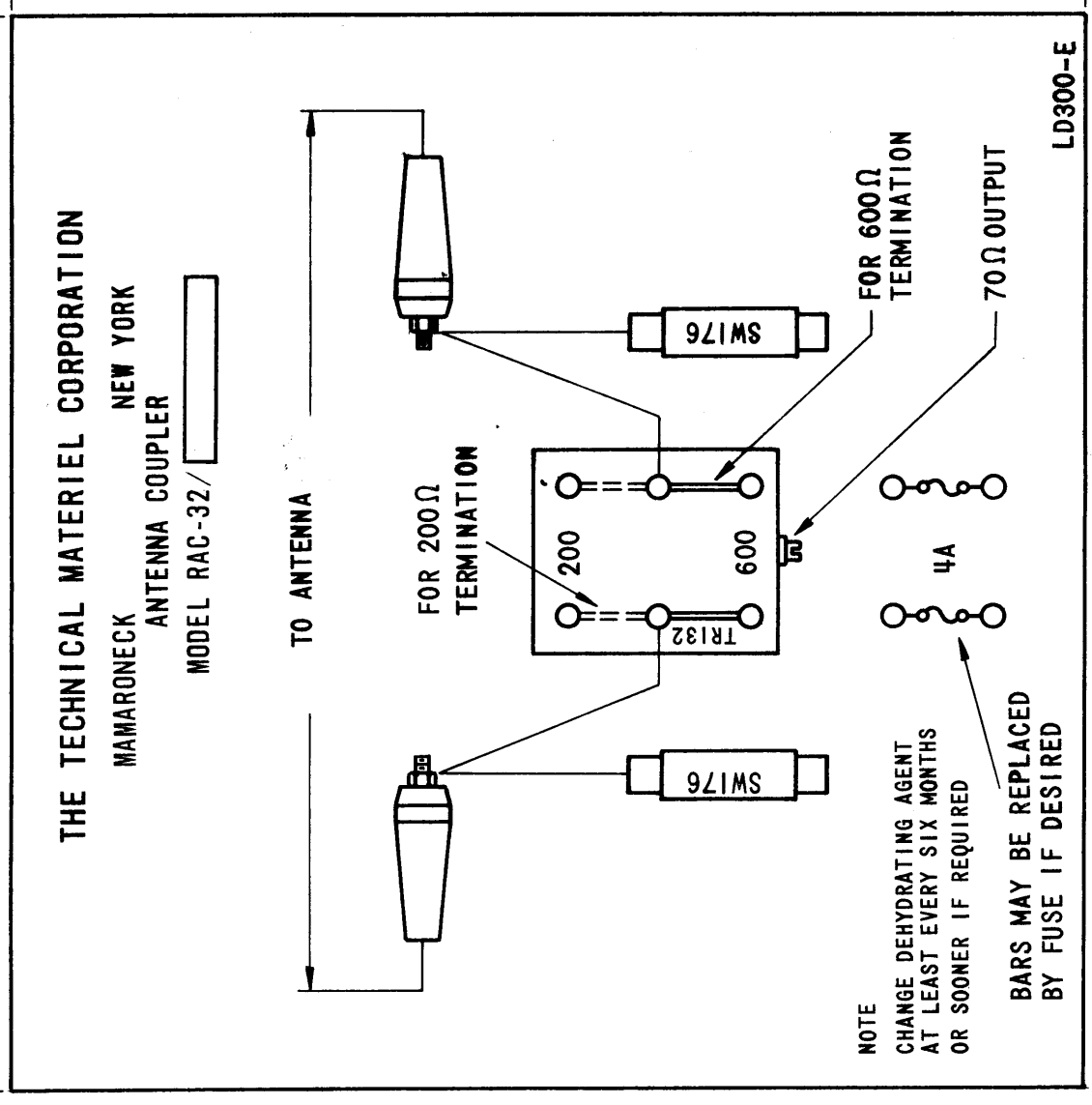
1

D

C

B

A



NOTE
 CHANGE DEHYDRATING AGENT
 AT LEAST EVERY SIX MONTHS
 OR SOONER IF REQUIRED
 BARS MAY BE REPLACED
 BY FUSE IF DESIRED

NOTE:

1. ALL LETTERING AND ARTWORK TO BE BLACK ON ALUMINUM BACKGROUND.
2. PRINT ON PHOTO-SENSITIVE BLACK METAL WITH ADHESIVE BACK.
3. REPRODUCTION METHOD: AS PER TMC SPEC S1222.

1	QTY / UNIT	RAC-32	MODEL USED ON	ASSY NO.
		APPLICATION		
		CODE		
<p>NOTICE TO PERSONS RECEIVING THIS DRAWING THE TECHNICAL MATERIEL CORPORATION claims proprietary right in the material disclosed hereon. This drawing is issued in confidence for engineering information only and may not be reproduced or used to manufacture anything shown hereon without permission from THE TECHNICAL MATERIEL CORPORATION to the user. This drawing is loaned for mutual assistance and is subject to recall at any time.</p>				

UNLESS OTHERWISE SPECIFIED
 DIMENSIONS ARE IN INCHES
 AND INCLUDE CHEMICALLY APPLIED
 OR PLATED FINISHES

DECIMALS
 .X ± .05
 .XX ± .01
 .XXX ± .005

FRACTIONS
 1/64

TOLS.
 ANGLES
 0°-30'

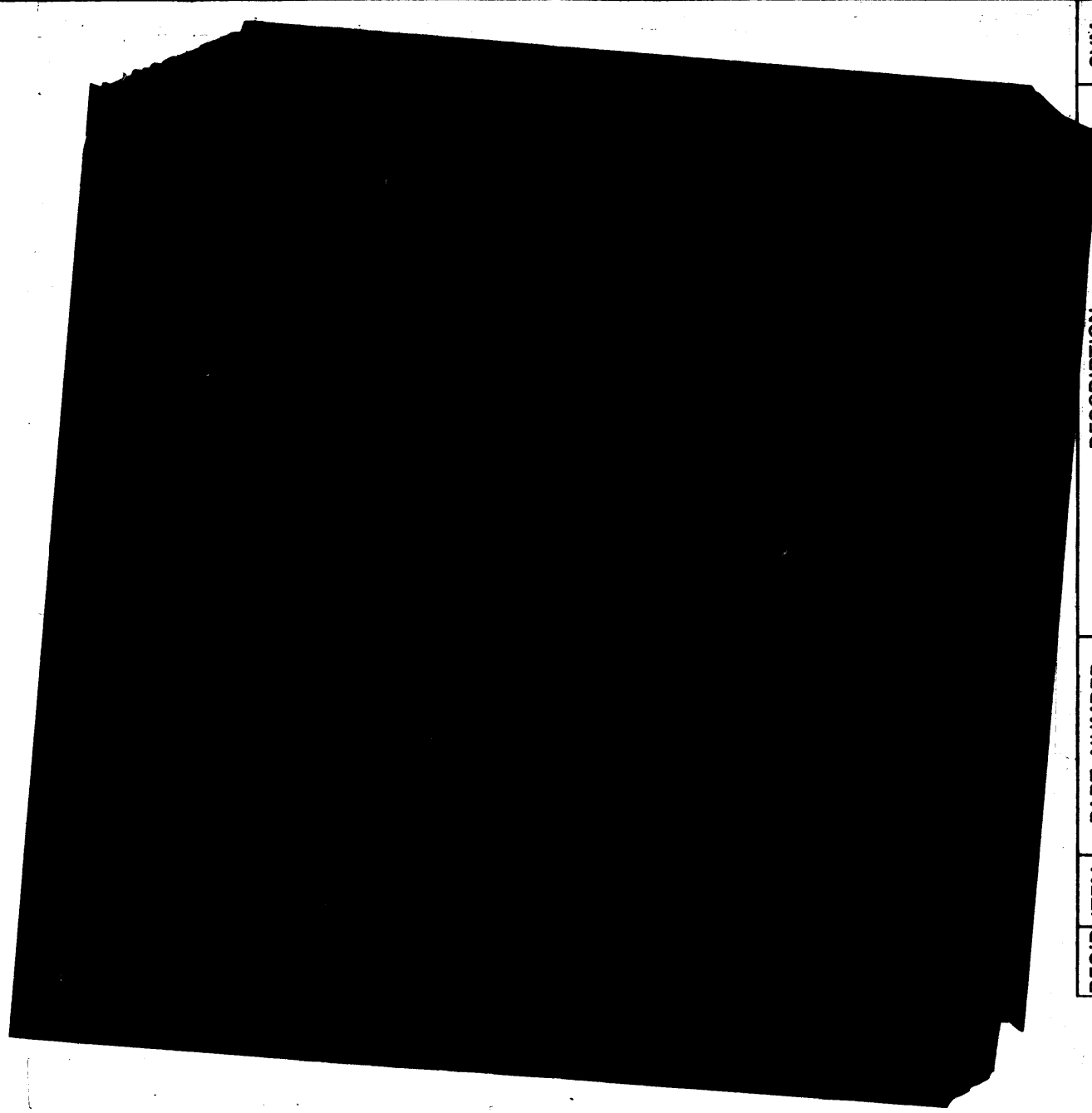
MATERIAL
 SEE NOTE
 FINISH

FINAL APPROVAL	BP	DATE	7-30-62
MECH. DES.		DATE	
ELECT. DES.		DATE	
CHECKED	AD	DATE	7-30-62
DRAWN	G.S.	DATE	7-30-62

REQ'D ITEM	PART NUMBER	DESCRIPTION	SYMBOL
LIST OF MATERIAL			
THE TECHNICAL MATERIEL CORP. MAMARONECK, NEW YORK			
SCHEMATIC DIAGRAM RAC-32			
SIZE	CODE IDENT. NO.	DWG NO.	ISSUE
B	82679	LD 300	E
SCALE		SHEET	OF
		1	

REVISIONS

ZONE	LTR	DESCRIPTION	DATE	E.M.N.NO	DRAFT	CHKD	APPD
	E	MATERIAL CHANGED	3/27/69	19375	44	FD	EFM

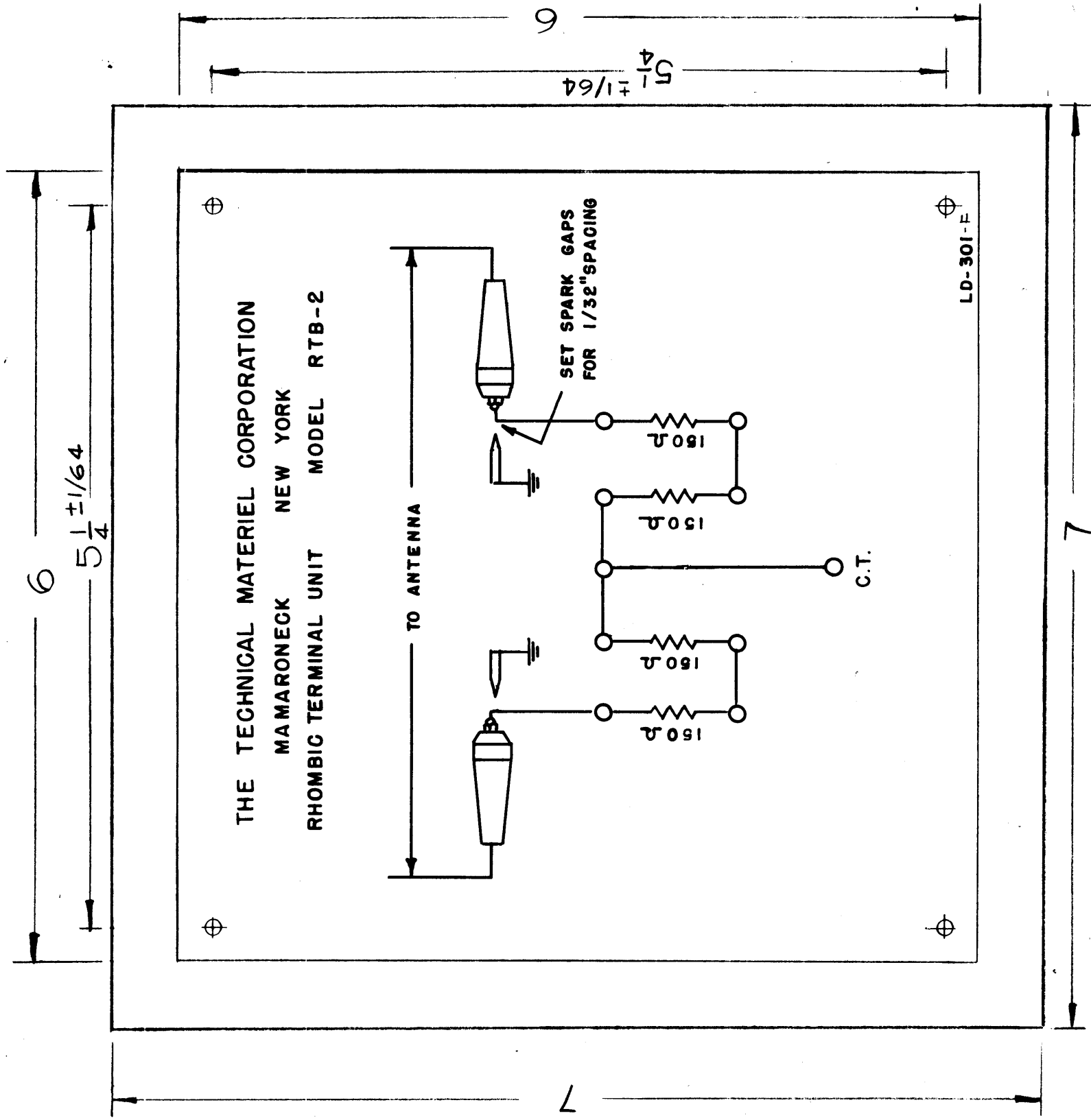


LD-301

Holes - $\frac{1}{8}$ (1.25) DIA - 4 REQ.

OBSOLETE
 REPLACED BY RTB-5
 FOR SPARE PARTS USE
 ONLY. 11-14-61

NOTE:
 1- PRINTED DIRECTLY ON FACE OF
 PLASTIC.
 2- MATERIAL:
 POLISHED WHITE OPAQUE
 VINYL PLASTIC.



THE TECHNICAL MATERIEL CORPORATION
 MAMARONECK NEW YORK
 RHOMBIC TERMINAL UNIT MODEL RTB-2

LD-301-F

NOTE TO PERSONS RECEIVING THIS DRAWING
 THE TECHNICAL MATERIEL CORPORATION claims
 proprietary right in the material disclosed herein.
 This drawing is issued in confidence for engineering
 information only and may not be reproduced or used
 to manufacture anything shown hereon without per-
 mission from THE TECHNICAL MATERIEL CORPORA-
 TION to the user. This drawing is loaned for technical
 assistance and is subject to recall at any time.

Property of:
 THE TECHNICAL MATERIEL CORPORATION
 MAMARONECK, NEW YORK

REQ. ITEM	PART NO.	DESCRIPTION	SYMBOL
	.015	THE TECHNICAL MATERIEL CORP. MAMARONECK, NEW YORK	
SEE NOTE #2	STOCK SIZE		
	MATERIAL	SCHEMATIC DIAGRAM	
		MODEL RTB-2	
		<i>A.J.J.</i>	
		CHECKED	FINAL APPROVAL
		DRAWN	
		ELEC. DES. APP.	MECH. DES. APP.
		LD-301	F

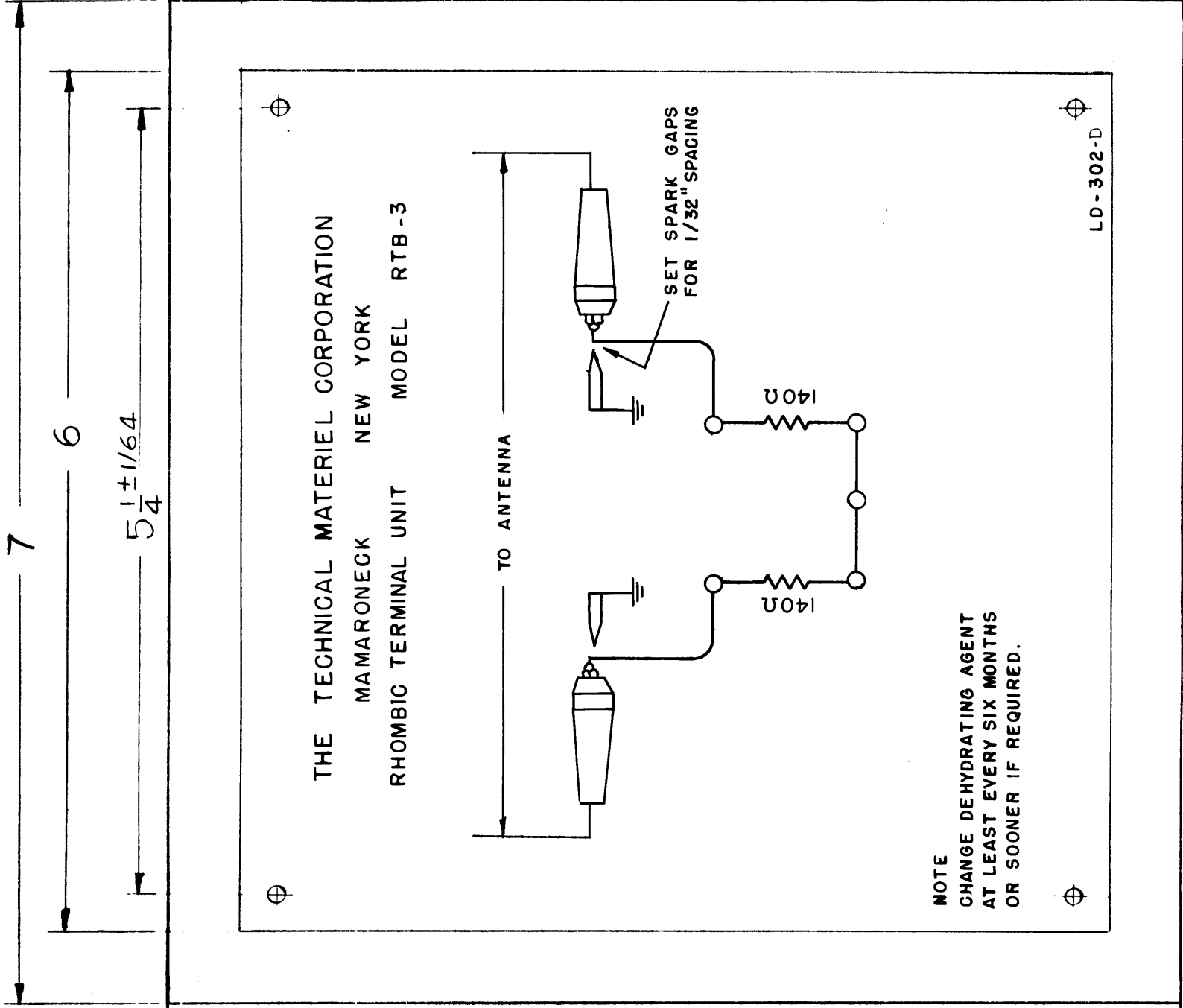
REQ. PER UNIT	PROJECT NO.	ASSY. NO.	DATE
1	RTB-2		7-26-56
	MODEL		
	USED ON		

ISSUE ITEM	CHANGED FROM	DATE	CH. NO.	DRAFTS	CHECKER	ENG. APP.
F 2	FINISH DELETED	7-1-63	8168		<i>A.J.J.</i>	
F 1	MATERIAL CLARIFIED					

TOLERANCES

MAXIMUM ALLOWABLE TOLERANCES HAVE BEEN DETERMINED AND ANY DEVIATIONS WILL BE CAUSE FOR REJECTION. REMOVE ALL BURRS AND SHARP EDGES

LD-302



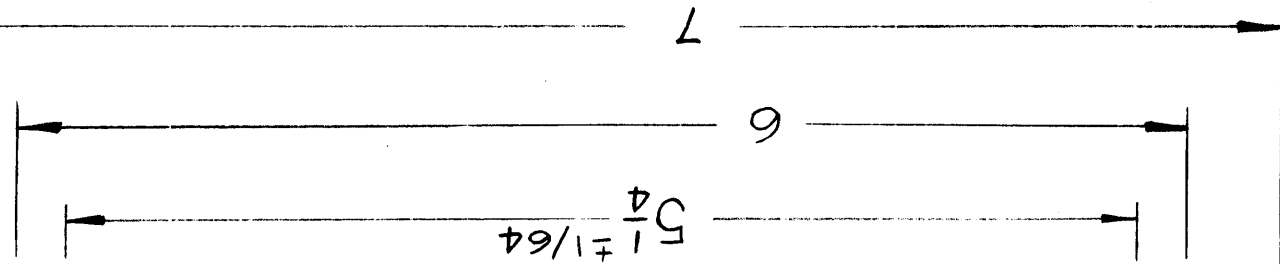
MOUNTING HOLES:
7/64 DIA 4 REQ.

THIS IS A PRELIMINARY DRAWING

THE TECHNICAL MATERIEL CORPORATION claims proprietary right in the material depicted herein. This drawing is issued in confidence for engineering information only and may not be re-produced or used to manufacture any item shown herein without permission from THE TECHNICAL MATERIEL CORPORATION to the user. This drawing is issued for mutual assistance and is subject to recall at any time.

Property of:
THE TECHNICAL MATERIEL CORPORATION
MAMARONECK, NEW YORK

NOTE:
1- PRINTED DIRECTLY ON FACE OF PLASTIC.
2- MATERIAL: POLISHED WHITE OPAQUE VINYL PLASTIC.



SUPERSEDED

REPLACED BY LD-443
4-17-63 EMN 8818

2	DIRECTLY REPLACED BY LD-443	DATE	4-17-63	CH. NO.	8818	DRAFTS	CHECKER	ENG. APP.
1	SCHEMATIC REVISED							
TOLERANCES								
MAXIMUM ALLOWABLE TOLERANCES HAVE BEEN DETERMINED AND ANY DEVIATIONS WILL BE CAUSE FOR REJECTION. REMOVE ALL BURRS AND SHARP EDGES								
DEC. DIM. ±								
FRAC. DIM. ±								
ANGULAR DIM. ±								

REQ. ITEM	PART NO.	DESCRIPTION	SYMBOL
	.015	THE TECHNICAL MATERIEL CORP. MAMARONECK, NEW YORK	
	SEE NOTE #2	SCHEMATIC DIAGRAM	
		MODEL RTB-3	
		DRAWN	FINAL APPROVAL
		CHECKED	
		DRAWN	A.J.J.
		ELEC. DES. APP. MECH. DES. APP.	
		FINISH & SPEC. NO.	LD-302
			D

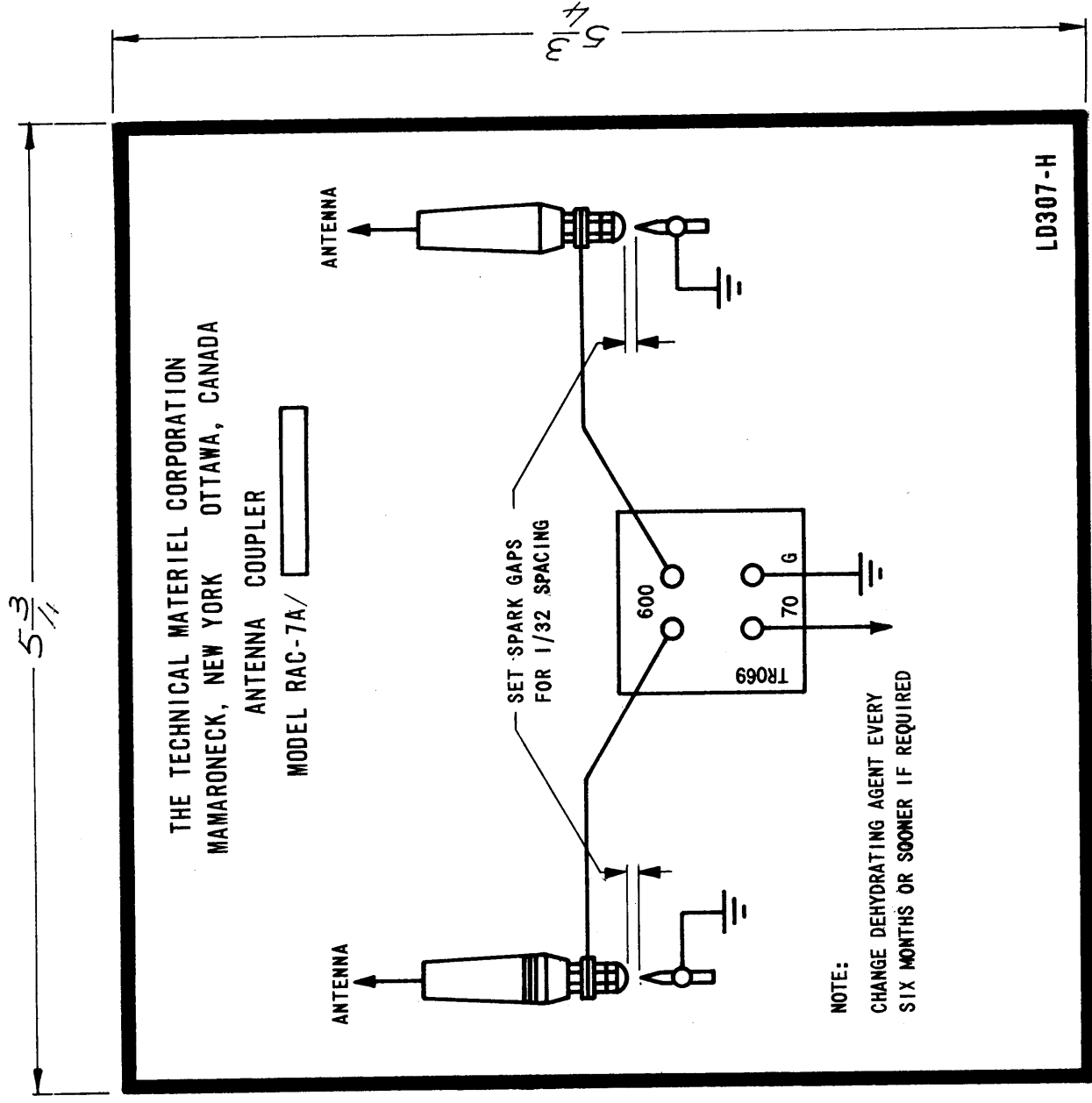
LD3075

4

3

2

1



NOTE:
1. ALL LETTERING AND ARTWORK TO BE BLACK ON ALUMINUM BACKGROUND, WITH ADHESIVE BACKING.
2. REPRODUCTION METHOD: AS PER TMC SPEC S1222

QTY / UNIT	MODEL USED ON	ASS'Y NO.
	RAC-7A/	
APPLICATION		
CODE		
<p>NOTICE TO PERSONS RECEIVING THIS DRAWING</p> <p>THE TECHNICAL MATERIEL CORPORATION claims proprietary right in the material disclosed hereon. This drawing is issued in confidence for engineering information only and may not be reproduced or used to manufacture anything shown hereon without permission from THE TECHNICAL MATERIEL CORPORATION to the user. This drawing is loaned for mutual assistance and is subject to recall at any time.</p>		

REVISIONS

ZONE	LTR	DESCRIPTION	DATE	E.M.N.NO	DRAFT	CHKD	APPD
	H	REDRAWN WITH REV	9/2/69	19578	KH	JA	EFN

REQ'D ITEM	PART NUMBER	DESCRIPTION	SYM.
LIST OF MATERIAL			
FINAL APPROVAL	A.J.J.	DATE	11/12/56
MECH. DES.		DATE	
ELECT. DES.		DATE	
CHECKED	JAD	DATE	11/12/56
DRAWN	JAD	DATE	8/25/69
SIZE	B	CODE IDENT. NO.	82679
SCALE		DWG NO.	LD 307
		SHEET	1
		OF	

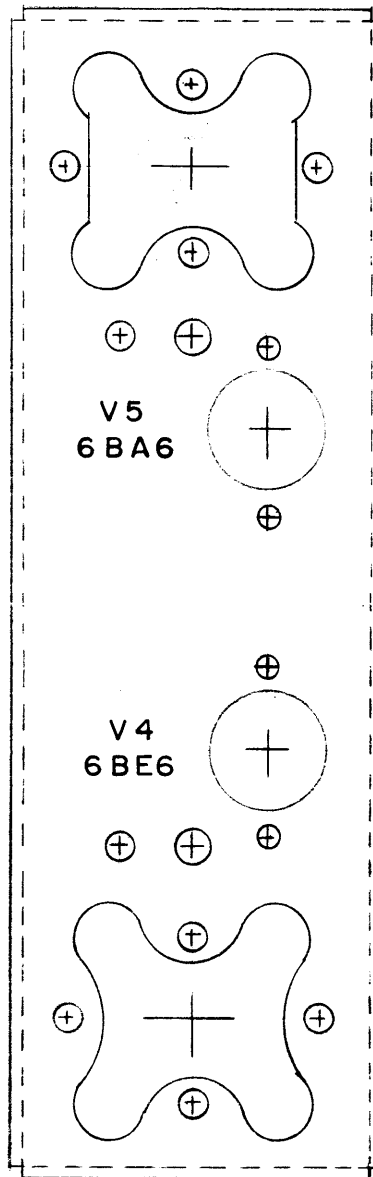
5

4

3

2

1



OUTSIDE OF CHASSIS

NOTICE TO PERSONS RECEIVING THIS DRAWING

THE TECHNICAL MATERIEL CORPORATION claims proprietary right in the material disclosed hereon. This drawing is issued in confidence for engineering information only and may not be reproduced or used to manufacture anything shown hereon without permission from THE TECHNICAL MATERIEL CORPORATION to the user. This drawing is loaned for mutual assistance and is subject to recall at any time.

Property of:
THE TECHNICAL MATERIEL CORPORATION
MAMARONECK, NEW YORK

LETTERING TO BE 1/8" HIGH GOTHIC

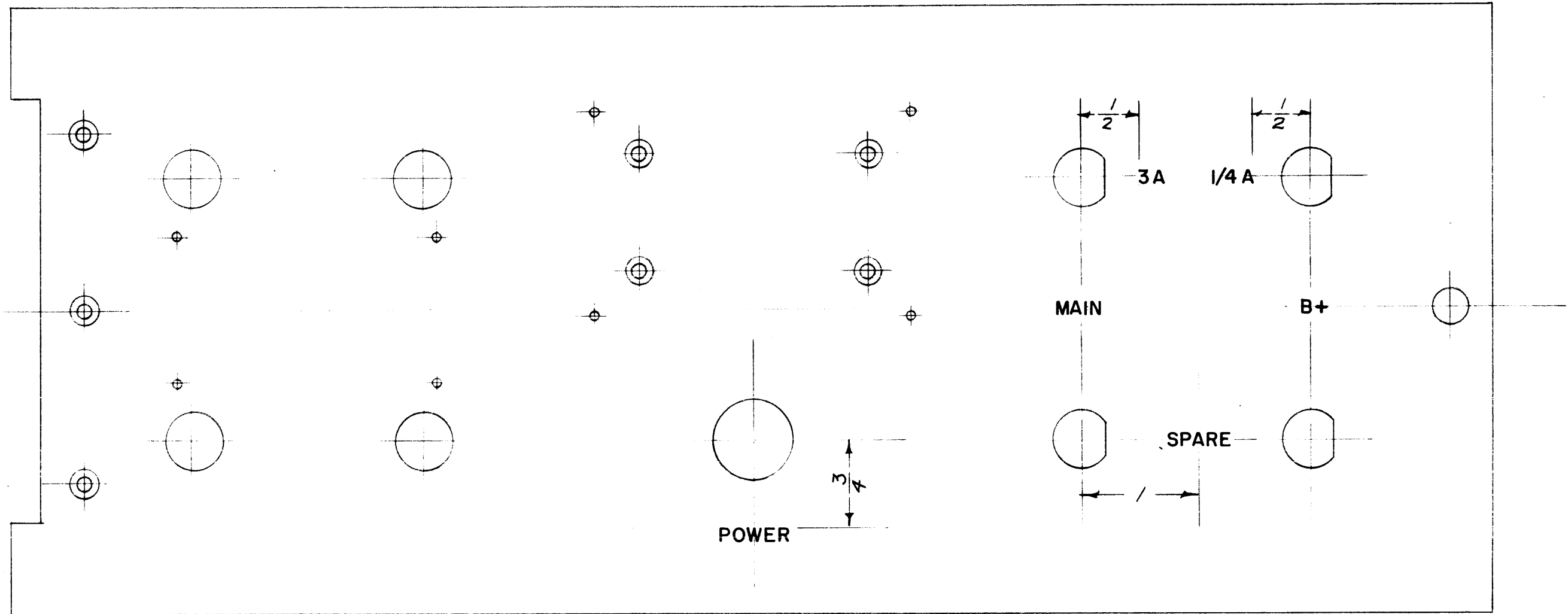
MS-593

ISSUE	ITEM	CHANGED FROM	DATE	CH. NO.	DRAFTS	CHECKER	ENG. APP.

	G P R			10-30-56
REQ. PER UNIT	MODEL	PROJECT NO.	ASS'Y. NO.	DATE
USED ON				

REQ. ITEM	PART NO.	DESCRIPTION	SYMBOL
		THE TECHNICAL MATERIEL CORP. MAMARONECK, NEW YORK	
STOCK SIZE		LETTERING, 2ND CONV. CHASSIS	
MATERIAL		MODEL GPR	
		CDD	<i>Handwritten initials</i>
TYPE & TEMPER	HEAT TREAT. SPEC.	DRAWN	CHECKED
		<i>P.L.K.</i>	<i>Handwritten initials</i>
FINISH & SPEC. NO.	ELEC. DES. APP.	MECH. DES. APP.	LD-311

LD-319



NOTE:
 ALL LETTERING TO BE WHITE FILLED
 GOTHIC TYPE.

LETTER HEIGHT	DEPTH OF STROKE	WIDTH OF STROKE
1/8	.010	.020

REF: MS-1019

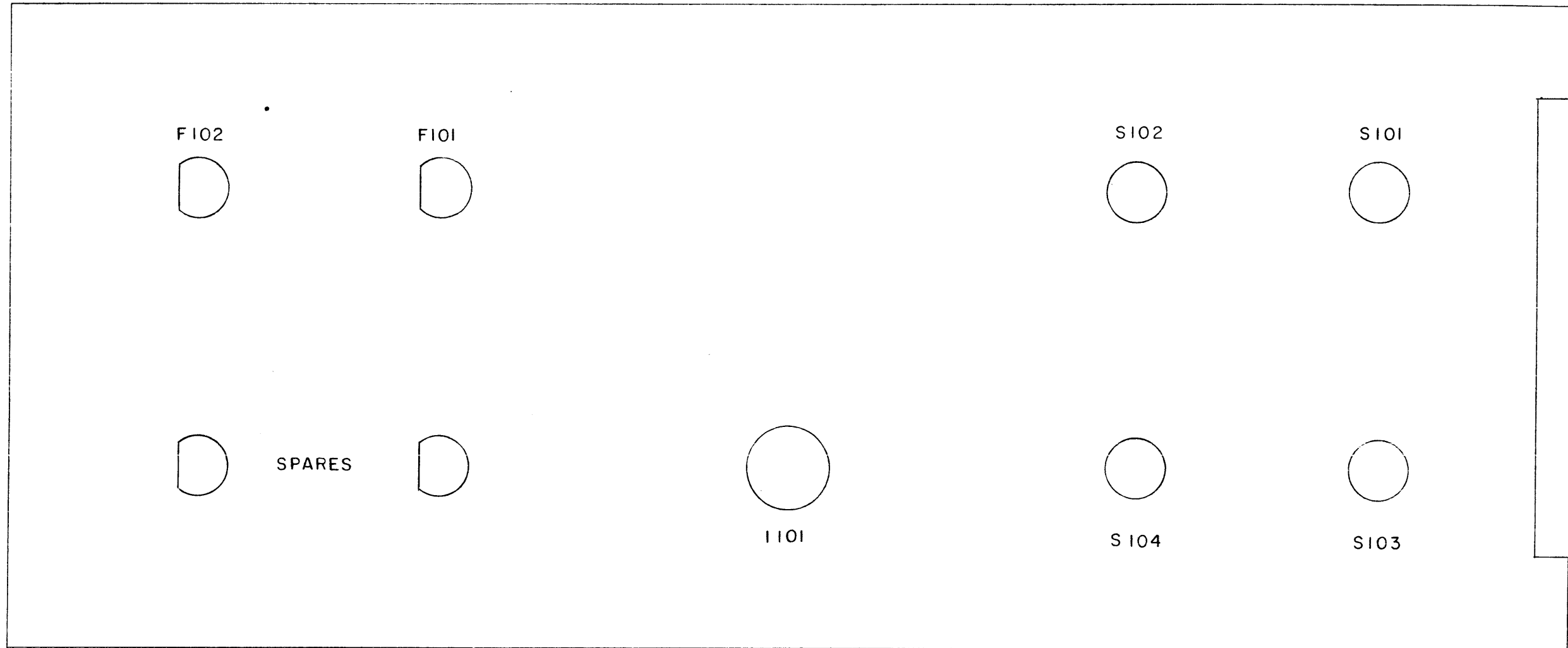
ISSUE	ITEM	CHANGED FROM	DATE	CH. NO.	DRAFTS	CHECKER	ENG. APP.

TOLERANCES		SCALE:	
DEC. DIM. ±		MAXIMUM ALLOWABLE TOLERANCES HAVE BEEN DETERMINED AND ANY DEVIATIONS WILL BE CAUSE FOR REJECTION.	
FRAC. DIM. ±		REMOVE ALL BURRS AND SHARP EDGES	
ANGULAR DIM. ±			

1	TST	638		1-14-57
1	TSR	638		1-14-57
REQ. PER UNIT	MODEL	PROJECT NO.	ASS'Y. NO.	DATE
USED ON				

REQ. ITEM	PART NO.	DESCRIPTION		SYMBOL
//		THE TECHNICAL MATERIEL CORP. MAMARONECK, NEW YORK		
	STOCK SIZE	FRONT PANEL ENGRAVING		
	MATERIAL			
//	//	6-1-14-57	<i>[Signature]</i>	A.J.J.
	TYPE & TEMPER	DRAWN	CHECKED	FINAL APPROVAL
	HEAT TREAT. SPEC.	<i>[Signature]</i>	<i>[Signature]</i>	LD-319
	FINISH & SPEC. NO.	ELEC. DES. APP.	MECH. DES. APP.	

LD 332



*Lettering to be 1/8" high Black Gothic
Stamping to be done after assembly
of components.*

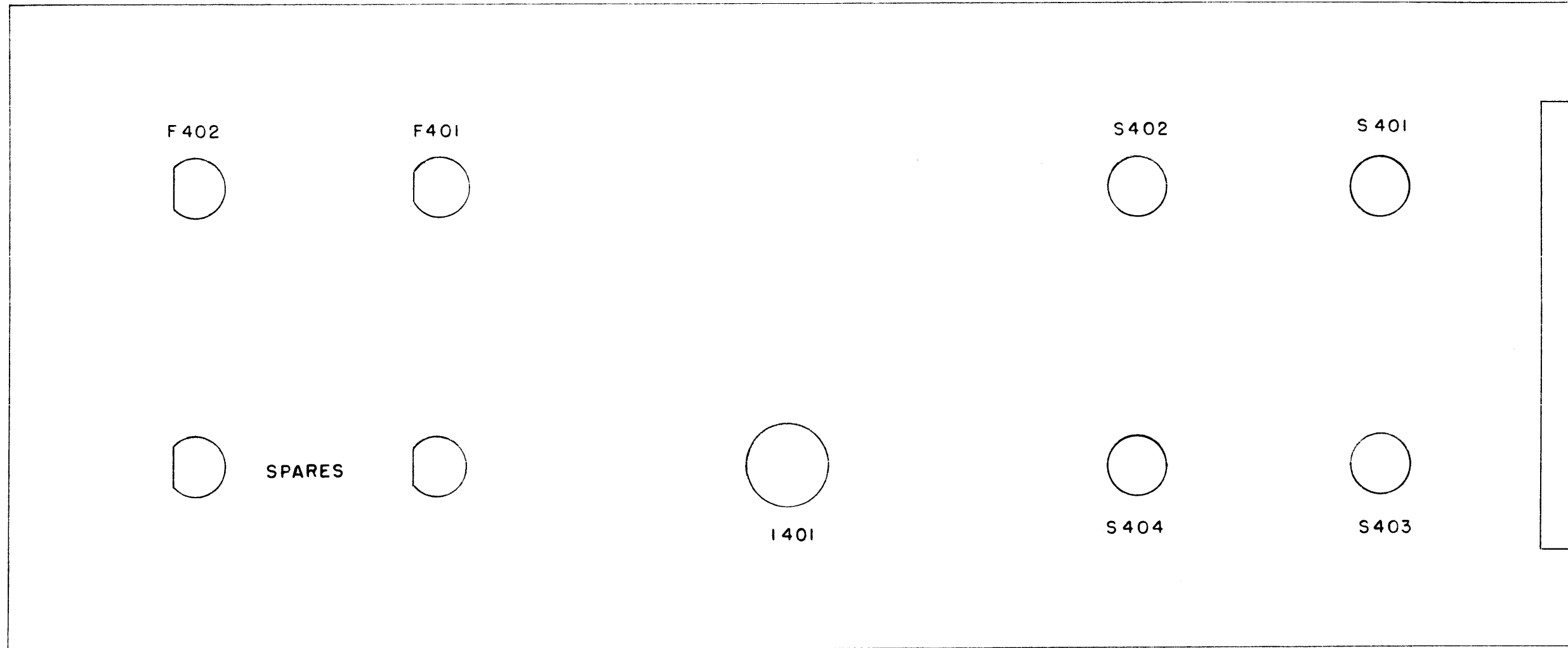
REF: MS-1019-2

ISSUE	ITEM	CHANGED FROM	DATE	CH. NO.	DRAFTS	CHECKER	ENG. APP.
TOLERANCES		SCALE:					
DEC. DIM. ±		MAXIMUM ALLOWABLE TOLERANCES HAVE BEEN DETERMINED AND ANY DEVIATIONS WILL BE CAUSE FOR REJECTION. REMOVE ALL BURRS AND SHARP EDGES					
FRAC. DIM. ±							
ANGULAR DIM. ±							

1	TST			2-19-57
REQ. PER UNIT	MODEL	PROJECT NO.	ASS'Y. NO.	DATE
USED ON				

REQ. ITEM	PART NO.	DESCRIPTION	SYMBOL
		THE TECHNICAL MATERIEL CORP. MAMARONECK, NEW YORK	
STOCK SIZE		STAMPING, FRONT PANEL	
MATERIAL		REAR VIEW	TST
	SC. 2/19-57	J.M.S.	A.J.J.
		DRAWN	CHECKED
			FINAL APPROVAL
			LD-332
FINISH & SPEC. NO.		ELEC. DES. APP.	MECH. DES. APP.

LD 333



LETTERING TO BE 1/8" HIGH BLACK GOTHIC.
STAMPING TO BE DONE AFTER ASSEMBLY
OF COMPONENTS

REF: MS-1019-2

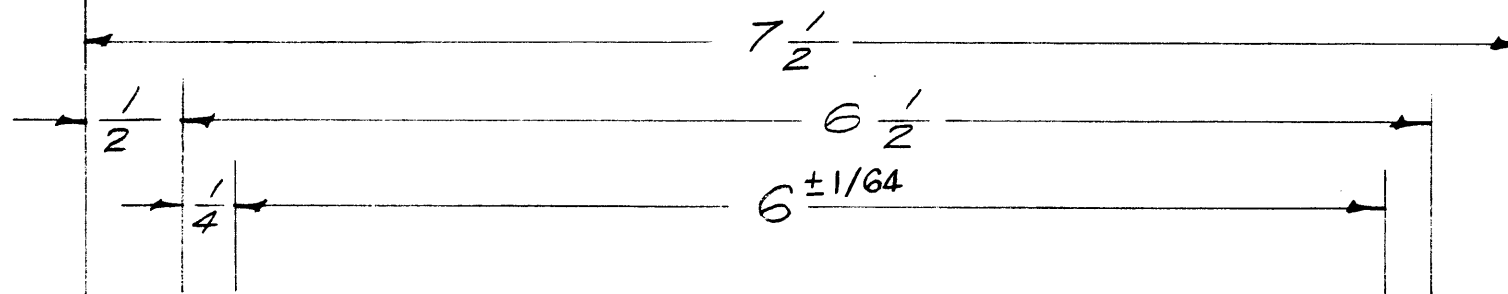
ISSUE	ITEM	CHANGED FROM	DATE	CH. NO.	DRAFTS	CHECKER	ENG. APP.

TOLERANCES		SCALE:
DEC. DIM. ±		MAXIMUM ALLOWABLE TOLERANCES HAVE BEEN DETERMINED AND ANY DEVIATIONS WILL BE CAUSE FOR REJECTION. REMOVE ALL BURRS AND SHARP EDGES
FRAC. DIM. ±		
ANGULAR DIM. ±		

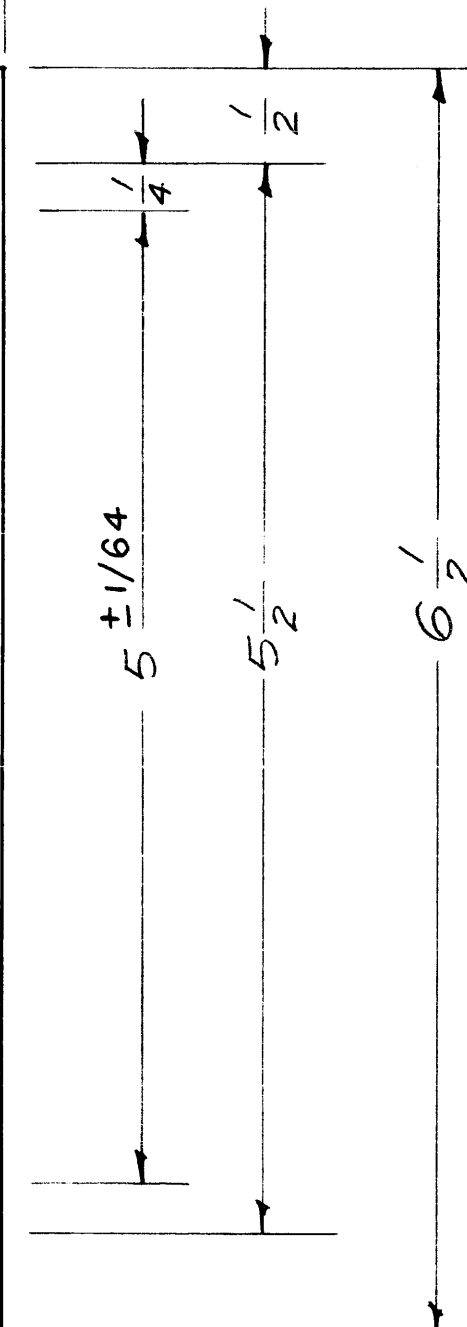
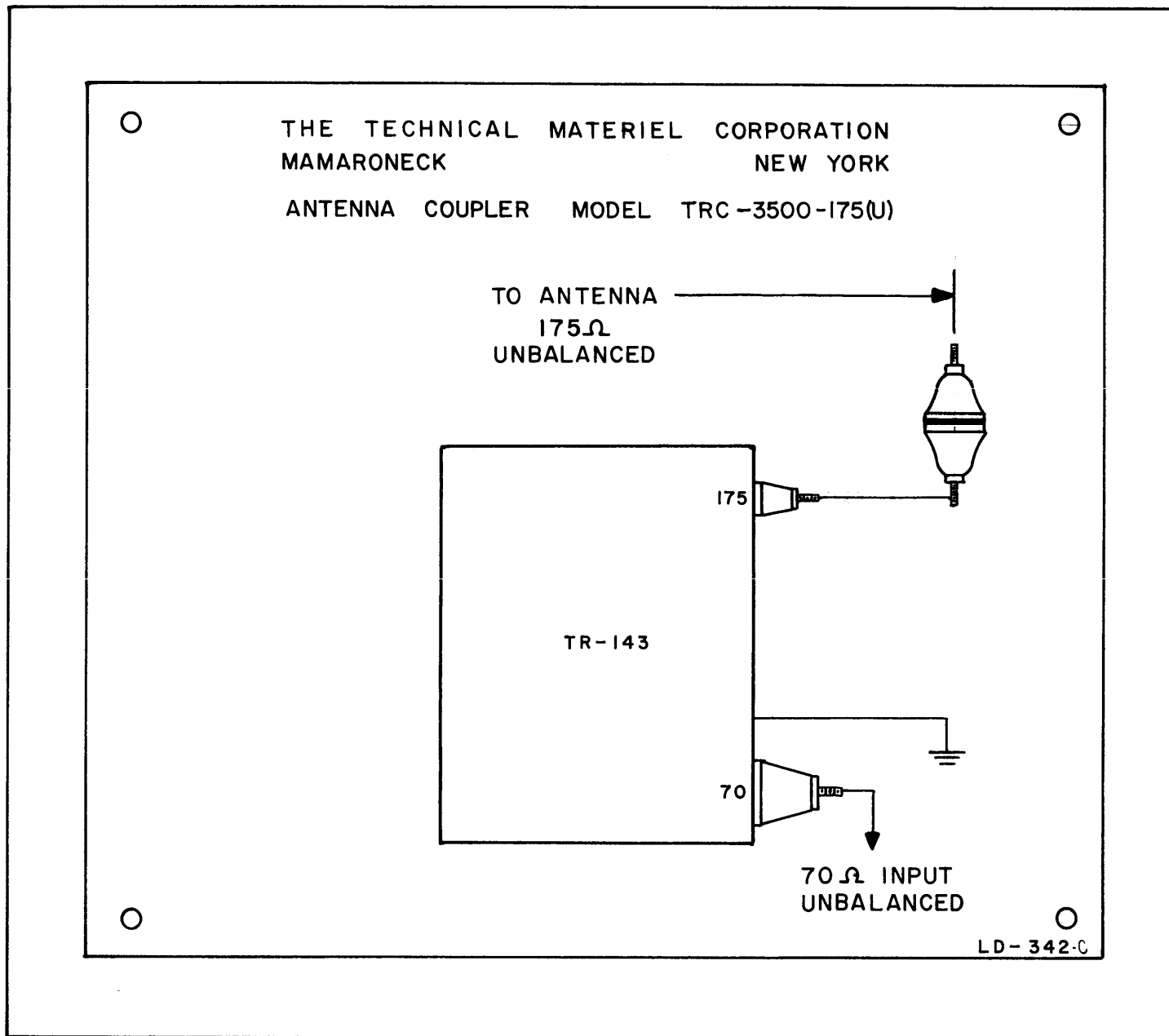
1	TSR			2-19-57
REQ. PER UNIT	MODEL	PROJECT NO.	ASS'Y. NO.	DATE
USED ON				

REQ. ITEM	PART NO.	DESCRIPTION	SYMBOL
		THE TECHNICAL MATERIEL CORP. MAMARONECK, NEW YORK	
		STAMPING FRONT PANEL	
		REAR VIEW	TSR
		SC. 2-19-57	AJJ
		DRAWN	CHECKED
			FINAL APPROVAL
			LD 333

LD-342 C



(4) HOLES REQ.
7/64 DIA.



NOTE:
1-PRINTED DIRECTLY ON
FACE OF PLASTIC.
2-MATERIAL:
POLISHED WHITE OPAQUE
VINYL PLASTIC.

NOTICE TO PERSONS RECEIVING THIS DRAWING
THE TECHNICAL MATERIEL CORPORATION claims
proprietary right in the material disclosed hereon.
This drawing is issued in confidence for engineering
information only and may not be reproduced or used
to manufacture anything shown hereon without per-
mission from THE TECHNICAL MATERIEL CORPORA-
TION to the user. This drawing is loaned for mutual
assistance and is subject to recall at any time.

Property of:
THE TECHNICAL MATERIEL CORPORATION
MAMARONECK, NEW YORK

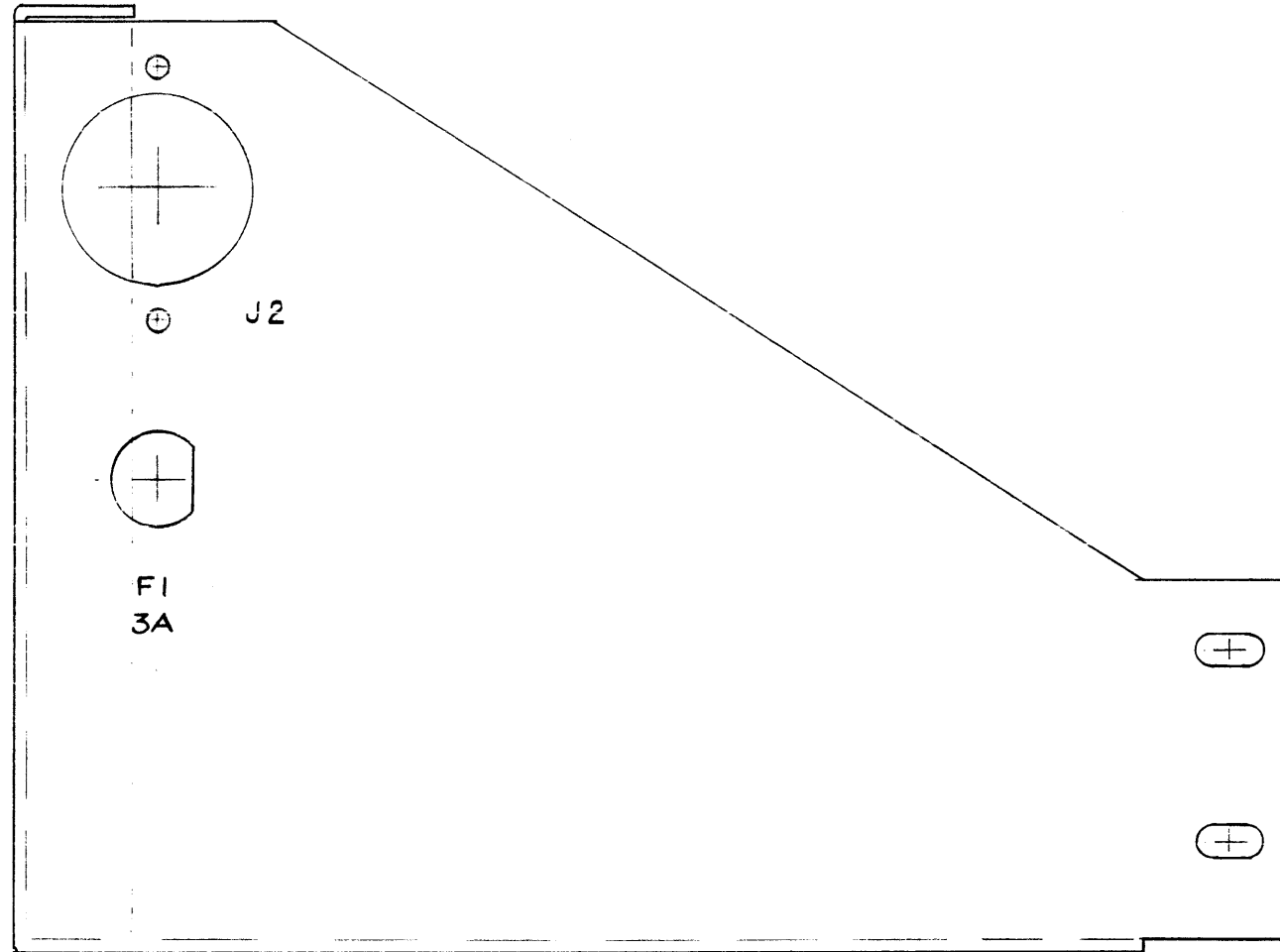
ISSUE	ITEM	CHANGED FROM	DATE	CH. NO.	DRAFTS	CHECKER	ENG. APP.
C	2	FINISH DELETED	2-1-63	8168	EF	YD	AK
	1	MATERIAL CLARIFIED					
B	2	FINISH & NOTE ADDED	7-18-62	6925	EF	QOB	AK
	1	MATL WAS VINYL PLASTIC	2-10-61	4076	RU	QOB	AK
A	1	±1/64 Added to Dim 536					

TOLERANCES		SCALE:
DEC. DIM. ±		MAXIMUM ALLOWABLE TOLERANCES HAVE BEEN DETERMINED AND ANY DEVIATIONS WILL BE CAUSE FOR REJECTION. REMOVE ALL BURRS AND SHARP EDGES
FRAC. DIM. ±		
ANGULAR DIM. ±		

1	TRC 3500 175(U)			3-6-57
REQ. PER UNIT	MODEL	PROJECT NO.	ASS'Y. NO.	DATE
USED ON				

REQ. ITEM	PART NO.	DESCRIPTION	SYMBOL
	.015	THE TECHNICAL MATERIEL CORP. MAMARONECK, NEW YORK	
	STOCK SIZE		
	SEE NOTE #2	SCHMATIC DIAGRAM	
	MATERIAL	TRC-3500-175(U) TR-143	
	#	163-6-57	A.J.J.
	TYPE & TEMPER	DRAWN	CHECKED
	HEAT TREAT. SPEC.	QOB	AK
	FINISH & SPEC. NO.	ELEC. DES. APP.	MECH. DES. APP.
			LD-342 C

LD-345



OUTSIDE , REAR VIEW

NOTICE TO PERSONS RECEIVING THIS DRAWING

THE TECHNICAL MATERIEL CORPORATION claims proprietary right in the material disclosed hereon. This drawing is issued in confidence for engineering information only and may not be reproduced or used to manufacture anything shown hereon without permission from THE TECHNICAL MATERIEL CORPORATION to the user. This drawing is loaned for mutual assistance and is subject to recall at any time.

Property of:
THE TECHNICAL MATERIEL CORPORATION
MAMARONECK, NEW YORK

LETTERING 1/8" HIGH BLACK GOTHIC

MARKING PROCESS: AS PER T.M.C SPECIFICATION S-727

REF - MS-1003

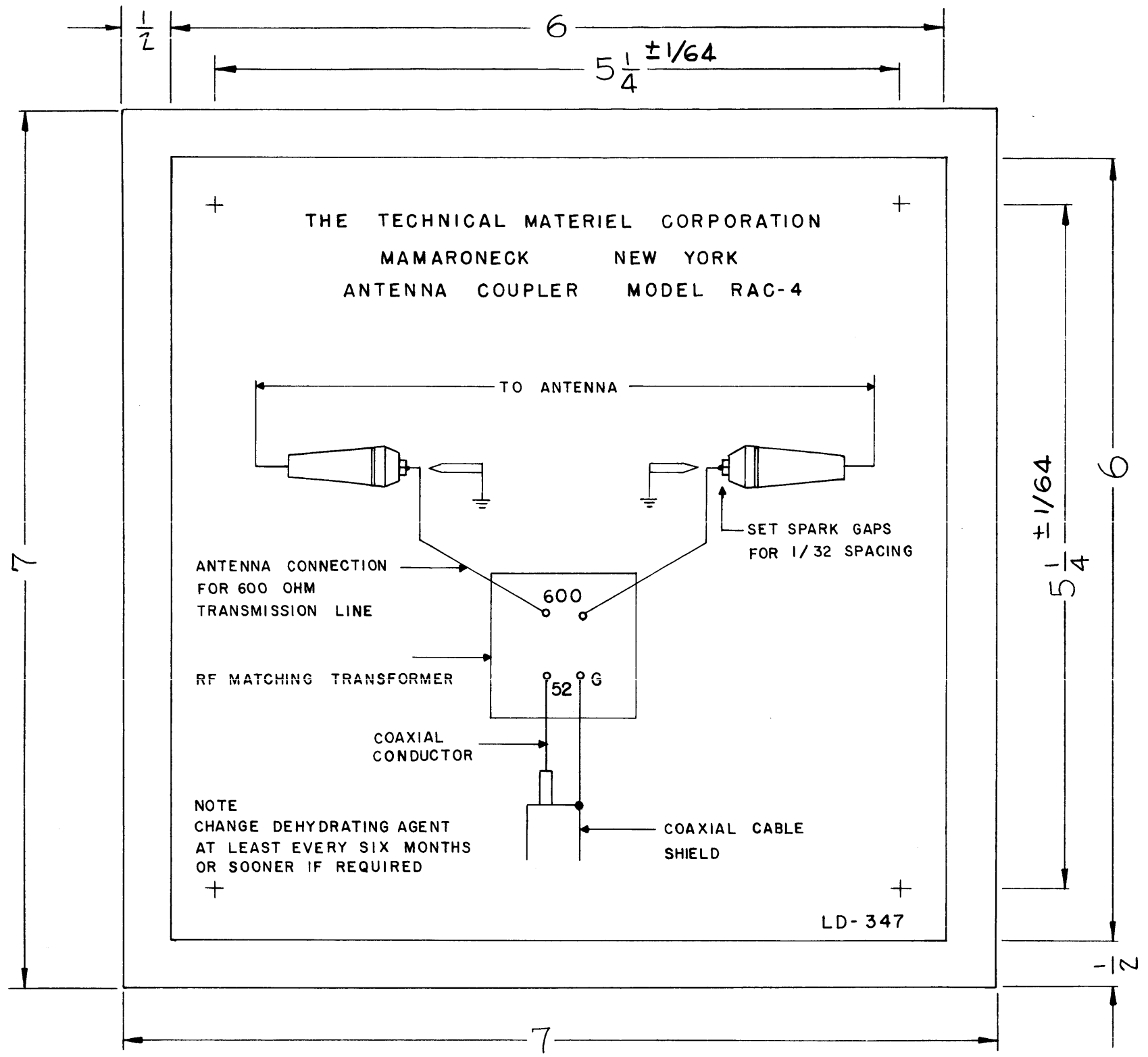
ISSUE	ITEM	CHANGED FROM	DATE	CH. NO.	DRAFTS	CHECKER	ENG. APP.

TOLERANCES		SCALE:
DEC. DIM. ±		MAXIMUM ALLOWABLE TOLERANCES HAVE BEEN DETERMINED AND ANY DEVIATIONS WILL BE CAUSE FOR REJECTION. REMOVE ALL BURRS AND SHARP EDGES
FRAC. DIM. ±		
ANGULAR DIM. ±		

1	MSR-1			3-27-57
REQ. PER UNIT	MODEL	PROJECT NO.	ASS'Y. NO.	DATE
USED ON				

REQ. ITEM	PART NO.	DESCRIPTION	SYMBOL
		THE TECHNICAL MATERIEL CORP. MAMARONECK, NEW YORK	
		STOCK SIZE	
		LETTERING , RIGHT SIDE	
		MATERIAL	PLATE (MSR-1)
		163-2751	JAS
			AJT
		TYPE & TEMPER	HEAT TREAT. SPEC.
		DRAWN	CHECKED
		PLK.	LD-345
		FINISH & SPEC. NO.	ELEC. DES. APP. MECH. DES. APP.

LD-347 B



NOTICE TO PERSONS RECEIVING THIS DRAWING

THE TECHNICAL MATERIEL CORPORATION claims proprietary right in the material disclosed herein. This drawing is issued in confidence for engineering information only and may not be reproduced or used to manufacture anything shown hereon without permission from THE TECHNICAL MATERIEL CORPORATION to the user. This drawing is loaned for mutual assistance and is subject to recall at any time.

Property of:
THE TECHNICAL MATERIEL CORPORATION
MAMARONECK, NEW YORK

4 HOLES REQ'D
7/64 (.109) DIA.

NOTE:
PRINTED DIRECTLY ON FACE OF PLASTIC.

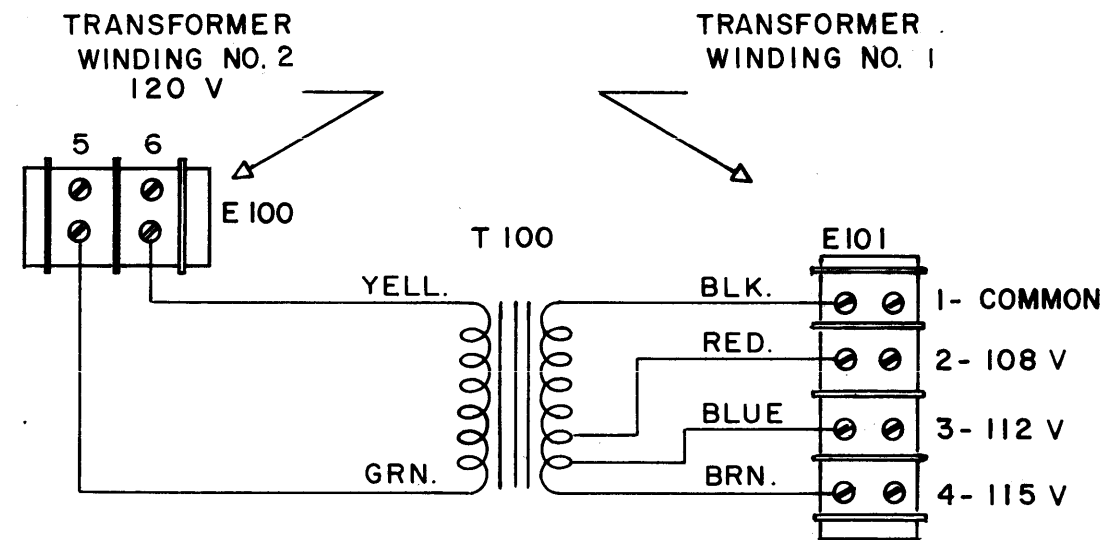
ISSUE	ITEM	CHANGED FROM	DATE	CH. NO.	DRAFTS	CHECKER	ENG. APP.
B	2	FINISH & NOTE ADDED	7-18-62	6925			
	1	MATL WAS VINYL PLASTIC					
A	1	±1/64 Added to 5/4	2-10-61	4076			
-		REDRAWN NO REVISION	11/20/58				

TOLERANCES		SCALE:
DEC. DIM. ±	MAXIMUM ALLOWABLE TOLERANCES HAVE BEEN DETERMINED AND ANY DEVIATIONS WILL BE CAUSE FOR REJECTION.	
FRAC. DIM. ±	REMOVE ALL BURRS AND SHARP EDGES	
ANGULAR DIM. ±		

REQ. PER UNIT	RAG-4	112	A-101	11-20-58
	MODEL	PROJECT NO.	ASS'Y. NO.	DATE
USED ON				

REQ. ITEM	PART NO.	DESCRIPTION	SYMBOL
	.015	THE TECHNICAL MATERIEL CORP. MAMARONECK, NEW YORK	
	STOCK SIZE		
	WHITE OPAQUE VINYL PLASTIC	SCHMATIC DIAGRAM	
	MATERIAL	MODEL RAC-4	
		J.C. BIELE	
		DRAWN	CHECKED
		FINAL APPROVAL	
	POISHED FRONT & REAR		
	FINISH & SPEC. NO.	ELEC. DES. APP.	MECH. DES. APP.
		LD-347	B

THE TECHNICAL MATERIEL CORPORATION
 MAMARONECK NEW YORK
 TOWER LIGHT ISOLATION TRANSFORMER
 MODEL TLI-1
 60 CYCLES 200 WATTS



NOTE:
 REMOVE SAFETY CHAIN FROM COVER
 WHEN OPERATING.

NOTICE TO PERSONS RECEIVING THIS DRAWING

THE TECHNICAL MATERIEL CORPORATION claims proprietary right in the material disclosed hereon. This drawing is issued in confidence for engineering information only and may not be reproduced or used to manufacture anything shown hereon without permission from THE TECHNICAL MATERIEL CORPORATION to the user. This drawing is loaned for mutual assistance and is subject to recall at any time.

Property of:

THE TECHNICAL MATERIEL CORPORATION
 MAMARONECK, NEW YORK

NOTE:
 1- PRINTED DIRECTLY ON FACE OF PLASTIC
 2- MATERIAL:
 POLISHED WHITE OPAQUE VINYL PLASTIC

ISSUE	ITEM	CHANGED FROM	DATE	CH. NO.	DRAFTS	CHECKER	ENG. APP.
D	2	FINISH DELETED	2-1-63	8168	AK	AK	AK
	1	MATERIAL CLARIFIED					
C	2	FINISH NOTE ADDED	7-18-62	6925	AK	AK	AK
	1	MATL WAS VINYL PLASTIC					
B	2	E101 WAS TO AC LINE ON SEC. E100 WAS TO LIGHT OR PRIM.	12/26/57	2	AK	AK	A.J.J.
A	1	COLORS ADDED - 120V WAS 115V	11/5/57	1	AK	AK	AK

TOLERANCES
 DEC. DIM. ±
 FRAC. DIM. ±
 ANGULAR DIM. ±

SCALE:
 MAXIMUM ALLOWABLE TOLERANCES HAVE BEEN DETERMINED AND ANY DEVIATIONS WILL BE CAUSE FOR REJECTION.
 REMOVE ALL BURRS AND SHARP EDGES

1	TLI-1	652	A-1484	6-15-57
REQ. PER UNIT	MODEL	PROJECT NO.	ASS'Y. NO.	DATE
USED ON				

REQ. ITEM	PART NO.	DESCRIPTION	SYMBOL
	.015	THE TECHNICAL MATERIEL CORP. MAMARONECK, NEW YORK	
	STOCK SIZE		
	SEE NOTE #2	SCHMATIC DIAGRAM	
	MATERIAL	MODEL TLI-1	
		AK	A.J.J.
	TYPE & TEMPER	DRAWN	CHECKED
	HEAT TREAT. SPEC.	AK	AK
	FINISH & SPEC. NO.	ELEC. DES. APP.	MECH. DES. APP.
		AK	AK
		LD-353	D

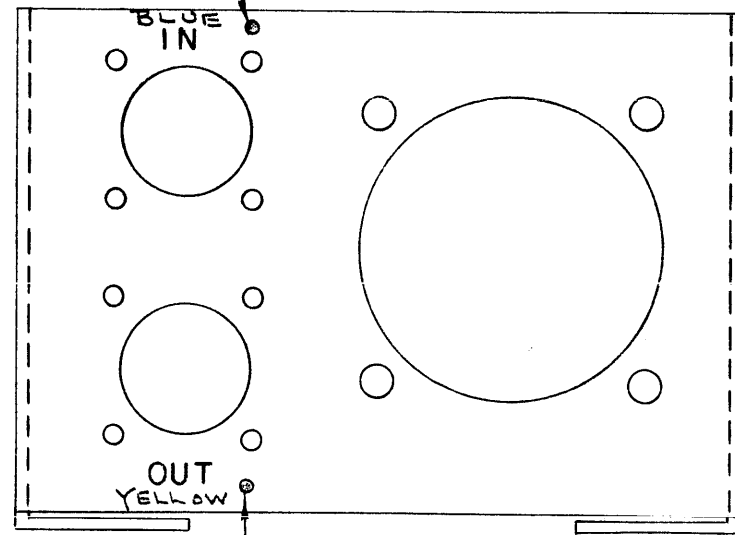
NOTICE TO PERSONS RECEIVING THIS DRAWING

THE TECHNICAL MATERIEL CORPORATION claims proprietary right in the material disclosed hereon. This drawing is issued in confidence for engineering information only and may not be reproduced or used to manufacture anything shown hereon without permission from THE TECHNICAL MATERIEL CORPORATION to the user. This drawing is loaned for mutual assistance and is subject to recall at any time.

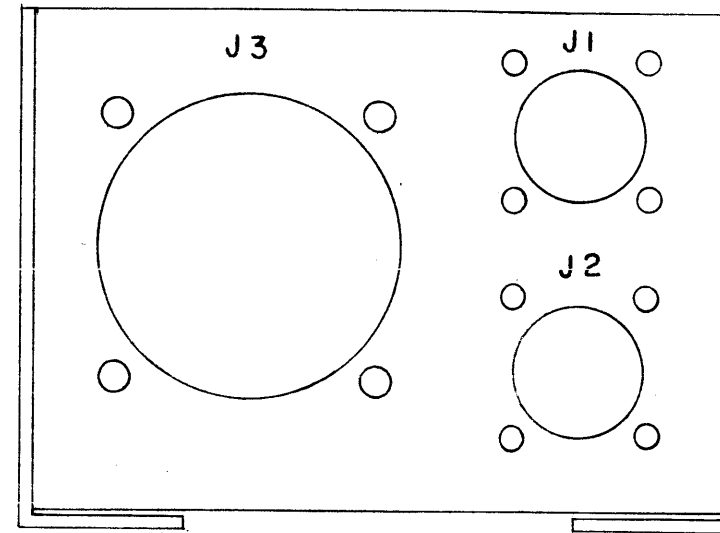
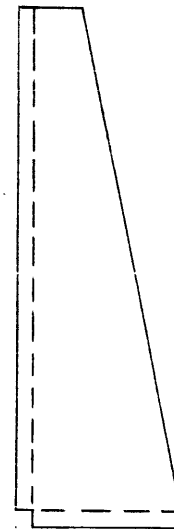
Property of:

THE TECHNICAL MATERIEL CORPORATION
MAMARONECK, NEW YORK

PLACE BLUE DOT HERE



PLACE YEL DOT HERE



NOTE - STAMPING TO BE 1/8 HIGH, BLACK GOTHIC.
STAMPING TO BE DONE AFTER THE ASSEMBLY OF THE COMPONENTS.

REF: MS-1085

ISSUE	ITEM	CHANGED FROM	DATE	CH. NO.	DRAFTS	CHECKER	ENG. APP.
A	1	COLOR CODED	8/24/58	438	1	[Signature]	[Signature]

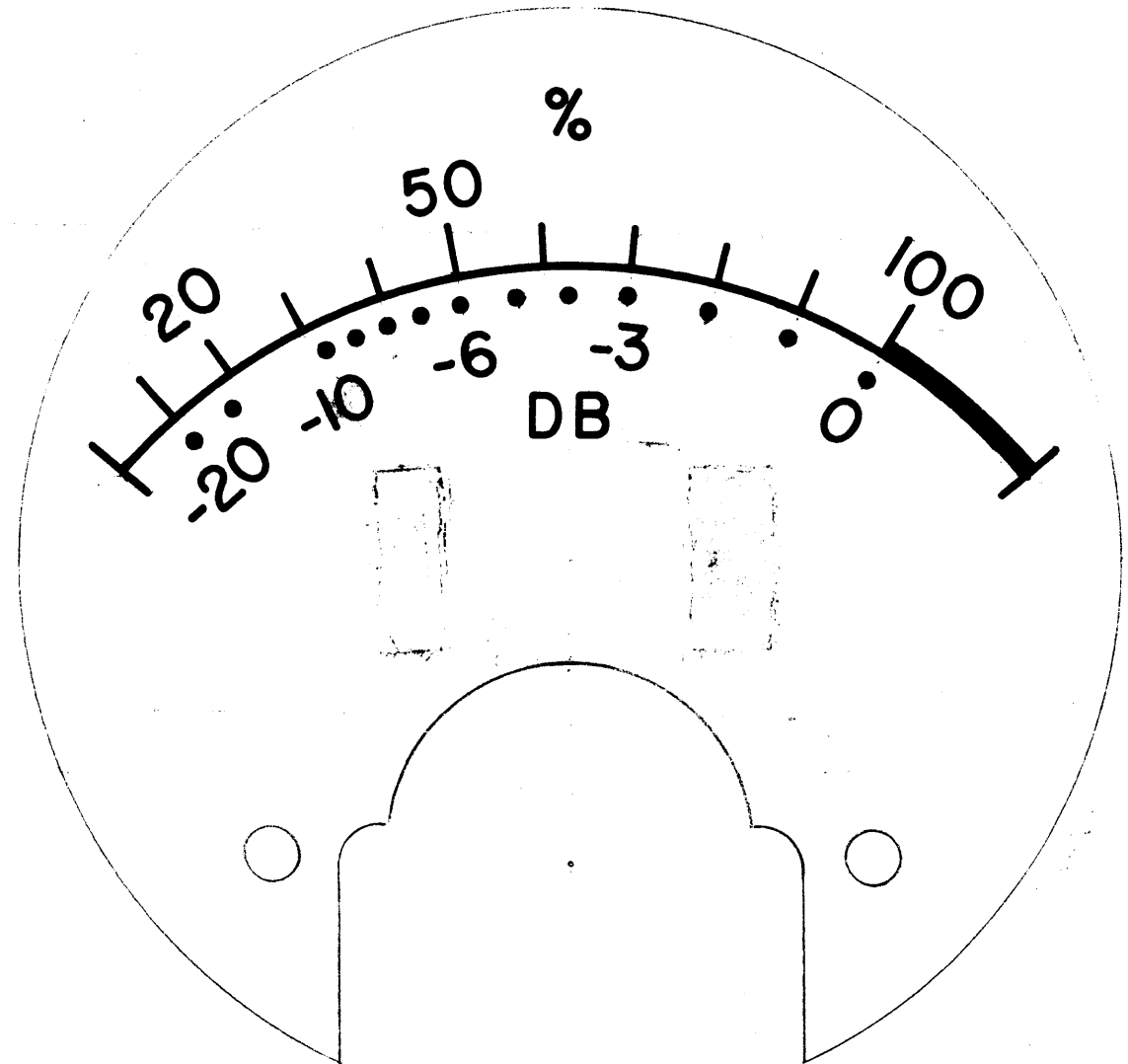
DEC. DIM. ±	MAXIMUM ALLOWABLE TOLERANCES HAVE BEEN DETERMINED AND ANY DEVIATIONS WILL BE CAUSE FOR REJECTION. REMOVE ALL BURRS AND SHARP EDGES
FRAC. DIM. ±	
ANGULAR DIM. ±	

1	A-1279			7-24-57
REQ. PER UNIT	MODEL	PROJECT NO.	ASS'Y. NO.	DATE
USED ON				

REQ. ITEM	PART NO.	DESCRIPTION			SYMBOL
		THE TECHNICAL MATERIEL CORP. MAMARONECK, NEW YORK			
		CHASSIS, CONNECTOR			
		LETTERING A-1279			
		7-24-57	[Signature]	[Signature]	
		TYPE & TEMPER	HEAT TREAT. SPEC.	DRAWN	CHECKED
					FINAL APPROVAL
		FINISH & SPEC. NO.			ELEC. DES. APP. MECH. DES. APP.
					LD-356 A

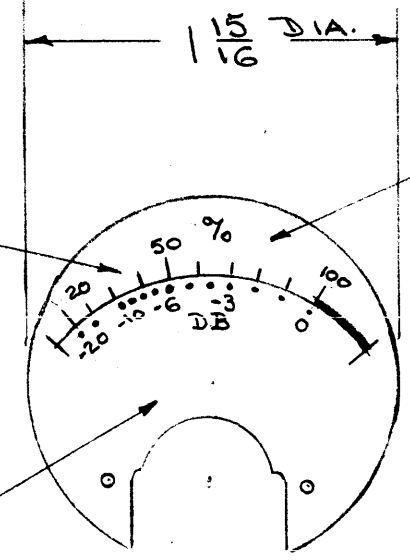
LD-364 A

1 2 size 1 15/16 Dia
for jacket plate
from motor



SCALE = 3X

CALIBRATION MARKS & NUMERALS TO BE BLACK



TRUE SIZE

NOTICE TO PERSONS RECEIVING THIS DRAWING

THE TECHNICAL MATERIEL CORPORATION claims proprietary right in the material disclosed hereon. This drawing is issued in confidence for engineering information only and may not be reproduced or used to manufacture anything shown hereon without permission from THE TECHNICAL MATERIEL CORPORATION to the user. This drawing is loaned for mutual assistance and is subject to recall at any time.

Property of:

THE TECHNICAL MATERIEL CORPORATION
MAMARONECK, NEW YORK

REF: MR-100-8

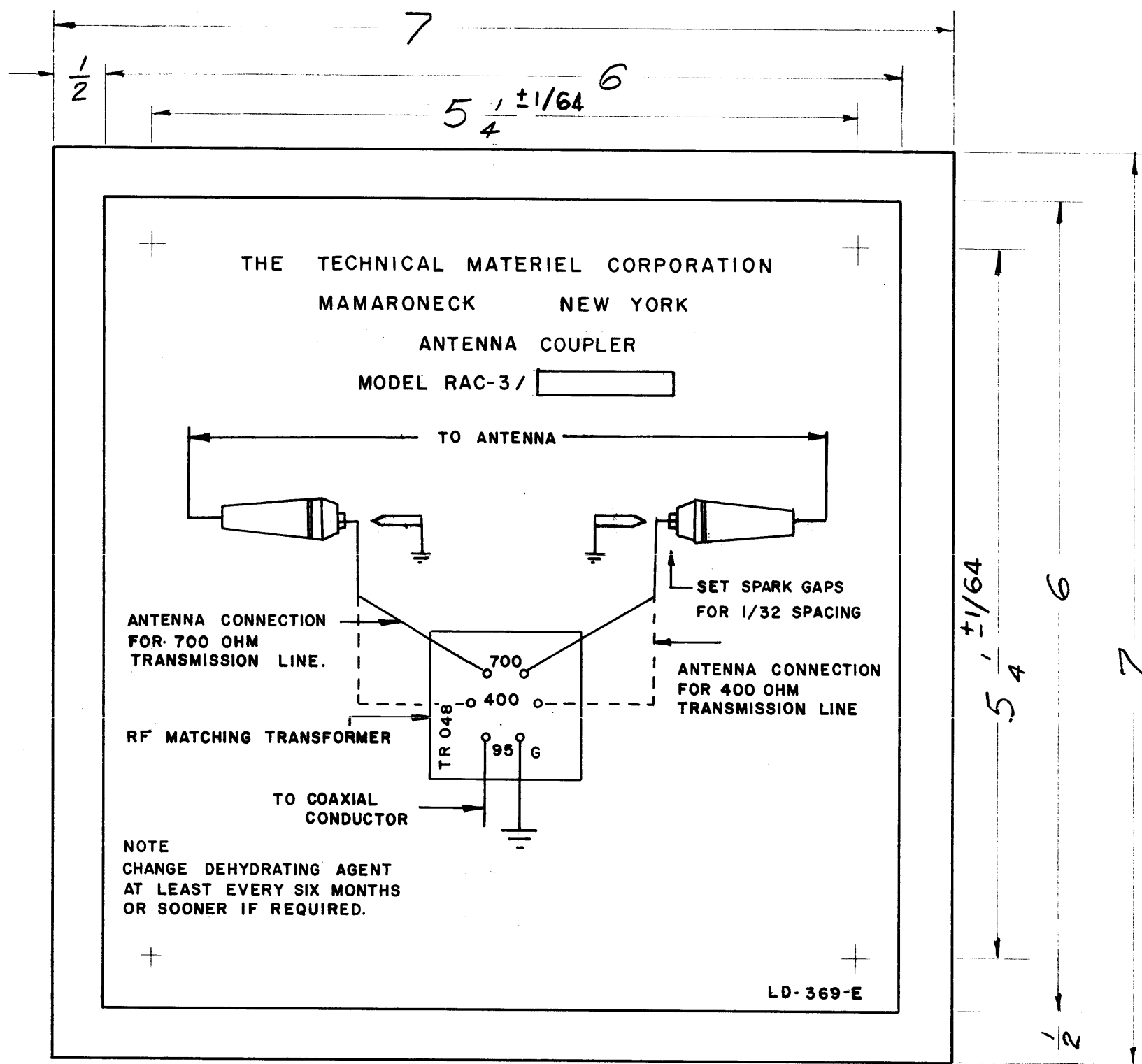
A	1	REF WAS MR-111-127-200	4/2/58	1	16	<i>[Signature]</i>	<i>[Signature]</i>
ISSUE	ITEM	CHANGED FROM	DATE	CH. NO.	DRAFTS	CHECKER	ENG. APP.
TOLERANCES		SCALE: 3X					
DEC. DIM. ±	FRAC. DIM. ±	ANGULAR DIM. ±	MAXIMUM ALLOWABLE TOLERANCES HAVE BEEN DETERMINED AND ANY DEVIATIONS WILL BE CAUSE FOR REJECTION. REMOVE ALL BURRS AND SHARP EDGES				

1	SBE-3	AP-101	11-30-59
1	SBE-112	380	8-13-57
REQ. PER UNIT	MODEL	PROJECT NO.	ASS'Y. NO.
			DATE
USED ON			

REQ. ITEM	PART NO.	DESCRIPTION	SYMBOL
		THE TECHNICAL MATERIEL CORP. MAMARONECK, NEW YORK	
		DIAL PLATE	
		METER, LEVEL INDICATING	
		<i>[Signature]</i>	<i>[Signature]</i>
TYPE & TEMPER	HEAT TREAT. SPEC.	DRAWN	CHECKED
FINISH & SPEC. NO.	ELEC. DES. APP.	MECH. DES. APP.	

LD-364 A

LD-369 E



NOTICE TO PERSONS RECEIVING THIS DRAWING

THE TECHNICAL MATERIEL CORPORATION claims proprietary right in the material disclosed hereon. This drawing is issued in confidence for engineering information only and may not be reproduced or used to manufacture anything shown hereon without permission from THE TECHNICAL MATERIEL CORPORATION to the user. This drawing is loaned for mutual assistance and is subject to recall at any time.

Property of:
THE TECHNICAL MATERIEL CORPORATION
MAMARONECK, NEW YORK

NOTE
CHANGE DEHYDRATING AGENT
AT LEAST EVERY SIX MONTHS
OR SOONER IF REQUIRED.

LD-369-E

4 HOLES REQ'D.
7/64 (.109) DIA.

NOTE:
1- PRINTED DIRECTLY ON FACE
OF PLASTIC.
2- MATERIAL:
POLISHED WHITE OPAQUE
VINYL PLASTIC, .015 THK.
3- 3/16 X 1 BLOCK, AREA TO BE
UNPOLISHED

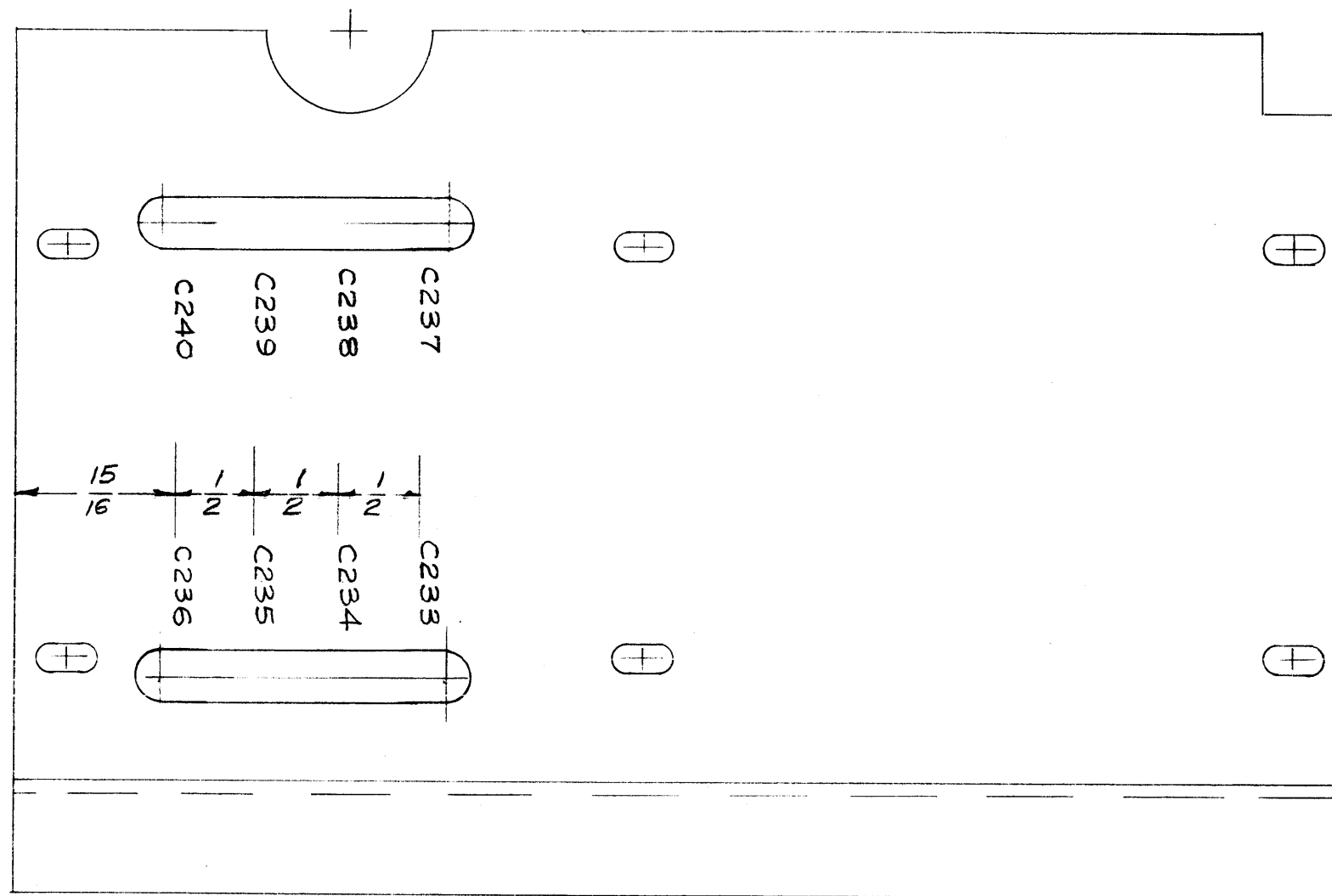
ISSUE	ITEM	CHANGED FROM	DATE	CH. NO.	DRAFTS	CHECKER	ENG. APP.
M	1	ON NOTE 2, .015THK ADD	7.31.64	11821	JTB	[Signature]	[Signature]
D	2	COAX CABLE DELETED, GND ADDED	4-9-63	8742	RE	[Signature]	[Signature]
C	1	REVISED TITLE, 3/16 X 1 BLOCK ADDED	2-1-63	8168	[Signature]	[Signature]	[Signature]
B	2	FINISH DELETED	7-18-62	6925	[Signature]	[Signature]	[Signature]
A	1	MATL WAS VINYL PLASTIC	2-10-61	4076	RU	[Signature]	[Signature]
A	1	+1/64 Added to 5/4					

TOLERANCES		SCALE:
DEC. DIM. ±		MAXIMUM ALLOWABLE TOLERANCES HAVE BEEN DETERMINED AND ANY DEVIATIONS WILL BE CAUSE FOR REJECTION. REMOVE ALL BURRS AND SHARP EDGES
FRAC. DIM. ±		
ANGULAR DIM. ±		

REQ. PER UNIT	MODEL	PROJECT NO.	ASSY. NO.	DATE
1	RAC-3		A-1463	
USED ON				

REQ. ITEM	PART NO.	DESCRIPTION	SYMBOL
	.015	THE TECHNICAL MATERIEL CORP. MAMARONECK, NEW YORK	
	STOCK SIZE		
	SEE NOTE #2	SCHEMATIC DIAGRAM	
	MATERIAL	MODEL RAC-3	
		SC 9/13/57 16 9/13/57	[Signature]
TYPE & TEMPER	HEAT TREAT. SPEC.	DRAWN	CHECKED
			FINAL APPROVAL
			LD-369 E
	FINISH & SPEC. NO.	ELEC. DES. APP.	MECH. DES. APP.

LD-370



Stamping to be $\frac{1}{8}$ high Black Gothic.

NOTICE TO PERSONS RECEIVING THIS DRAWING

THE TECHNICAL MATERIEL CORPORATION claims proprietary right in the material disclosed hereon. This drawing is issued in confidence for engineering information only and may not be reproduced or used to manufacture anything shown hereon without permission from THE TECHNICAL MATERIEL CORPORATION to the user. This drawing is loaned for mutual assistance and is subject to recall at any time.

Property of:
THE TECHNICAL MATERIEL CORPORATION
MAMARONECK, NEW YORK

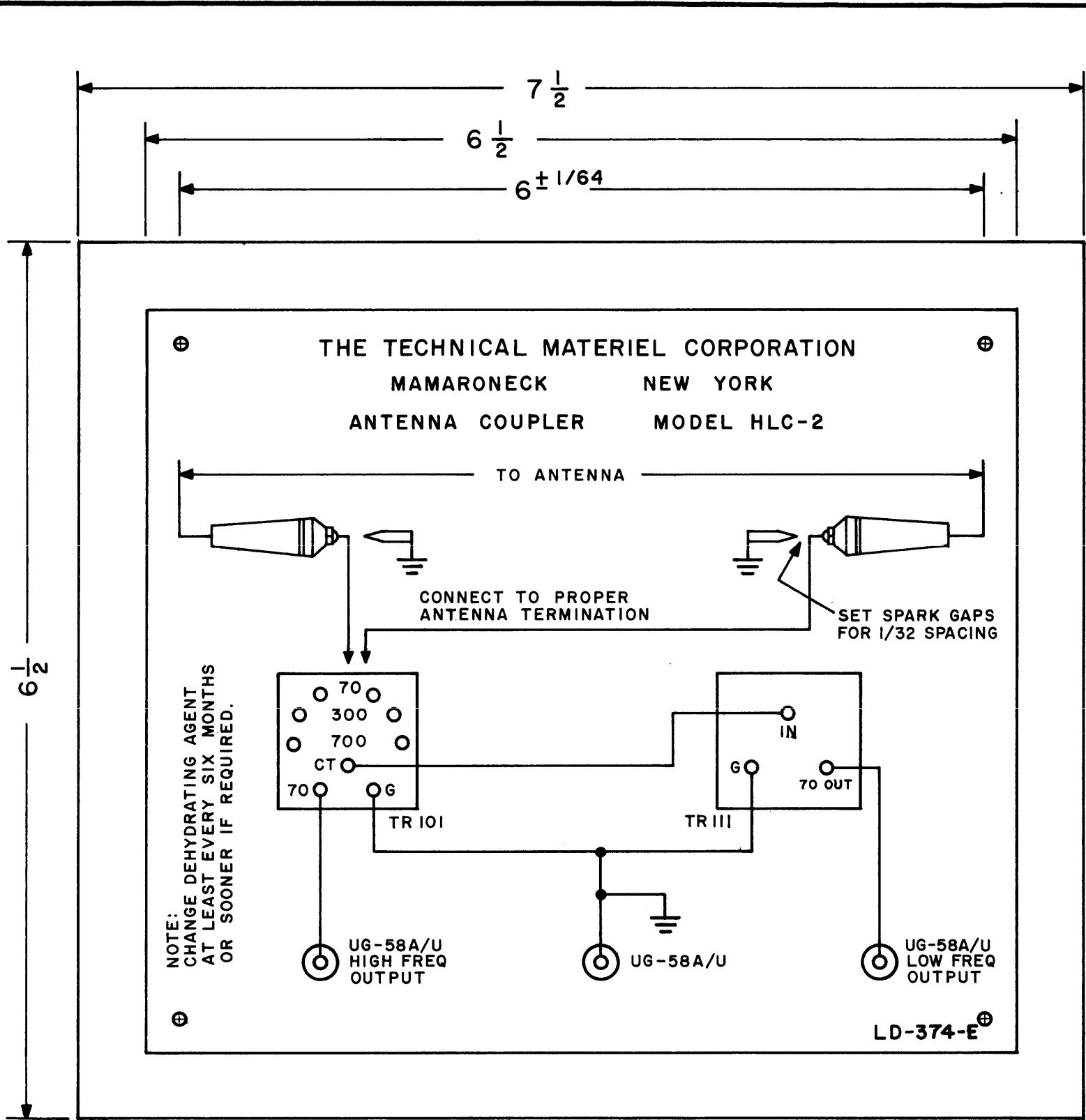
ISSUE	ITEM	CHANGED FROM	DATE	CH. NO.	DRAFTS	CHECKER	ENG. APP.

TOLERANCES		SCALE:
DEC. DIM. \pm	MAXIMUM ALLOWABLE TOLERANCES HAVE BEEN DETERMINED AND ANY DEVIATIONS WILL BE CAUSE FOR REJECTION.	
FRAC. DIM. \pm	REMOVE ALL BURRS AND SHARP EDGES	
ANGULAR DIM. \pm		

1	SBE-3	AD-102	12-2-59
1	SBE-142		9-30-57
REQ. PER UNIT	MODEL	PROJECT NO.	ASS'Y. NO.

Ref. MS-1107(2)

REQ. ITEM	PART NO.	DESCRIPTION	SYMBOL
		THE TECHNICAL MATERIEL CORP. MAMARONECK, NEW YORK	
STOCK SIZE		STAMPING, BOTTOM COVER,	
MATERIAL		XTAL OVEN	
		16 3/30/57	
TYPE & TEMPER	HEAT TREAT. SPEC.	DRAWN	CHECKED
		2B	2B
FINISH & SPEC. NO.	ELEC. DES. APP.	MECH. DES. APP.	LD-370



LD-374

REVISIONS					
SYM	DESCRIPTION	DATE	E.M.N. NO.	DRAFT	CHKD
C	NO REVISION - REDRAWN	9-12-62	4	MJT	<i>[Signature]</i>
D	FINISH DELETED; MATERIAL CLARIFIED	2-1-63	8168	<i>[Signature]</i>	<i>[Signature]</i>
E	SUPERSEDED BY LD-10146	9-17-63	9977	<i>[Signature]</i>	<i>[Signature]</i>

NOTICE TO PERSONS RECEIVING THIS DRAWING

THE TECHNICAL MATERIEL CORPORATION claims proprietary right in the material disclosed hereon. This drawing is issued in confidence for engineering information only and may not be reproduced or used to manufacture anything shown hereon without permission from THE TECHNICAL MATERIEL CORPORATION to the user. This drawing is loaned for mutual assistance and is subject to recall at any time.

Property of:
THE TECHNICAL MATERIEL CORPORATION
 MAMARONECK, NEW YORK

MOUNTING HOLES
 7/64 DIA. 4 REQ.

NOTE:
 PRINTED DIRECTLY ON FACE OF PLASTIC.

SUPERSEDED BY LD-10146
 (FOR SPARE PARTS ONLY)
 9-17-63 EMN 9977

6 1/2

5 ± 1/64

5 1/2

LD-374-E

REQ'D.	ITEM	PART NUMBER	DESCRIPTION	SYMBOL
LIST OF MATERIAL				
MATERIAL		THE TECHNICAL MATERIEL CORP.		
POLISHED WHITE OPAQUE VINYL PLASTIC		MAMARONECK, NEW YORK		
FINISH		TITLE		
		SCHEMATIC DIAGRAM HLC-2		
UNLESS OTHERWISE SPECIFIED DIMENSIONS ARE IN INCHES AND INCLUDE CHEMICALLY APPLIED OR PLATED FINISHES		DRAWN	DATE	FINAL APPROVAL
		M. J. TANTILLA	9-12-62	<i>[Signature]</i>
		CHECKED	DATE	DATE
		<i>[Signature]</i>	9-12-62	
		ELECT. DES.	DATE	
		MECH. DES.	DATE	
SHEET				REV. LTR.

NOTES

Q'TY./UNIT	MODEL USED ON	ASS'Y. NO.
1	HLC-1	
SCALE	CODE	
THE CONTENTS OF THIS DRAWING ARE THE EXCLUSIVE PROPERTY OF THE TECHNICAL MATERIEL CORP. ITS UNAUTHORIZED USE OR REPRODUCTION IN WHOLE OR IN PART IS STRICTLY FORBIDDEN.		

DECIMALS	FRACTIONS	TOLERANCES
.X ± .05	± 1/64	
.XX ± .01	ANGLES	
.XXX ± .005	± 0° 30'	

LD 380 5

4

3

2

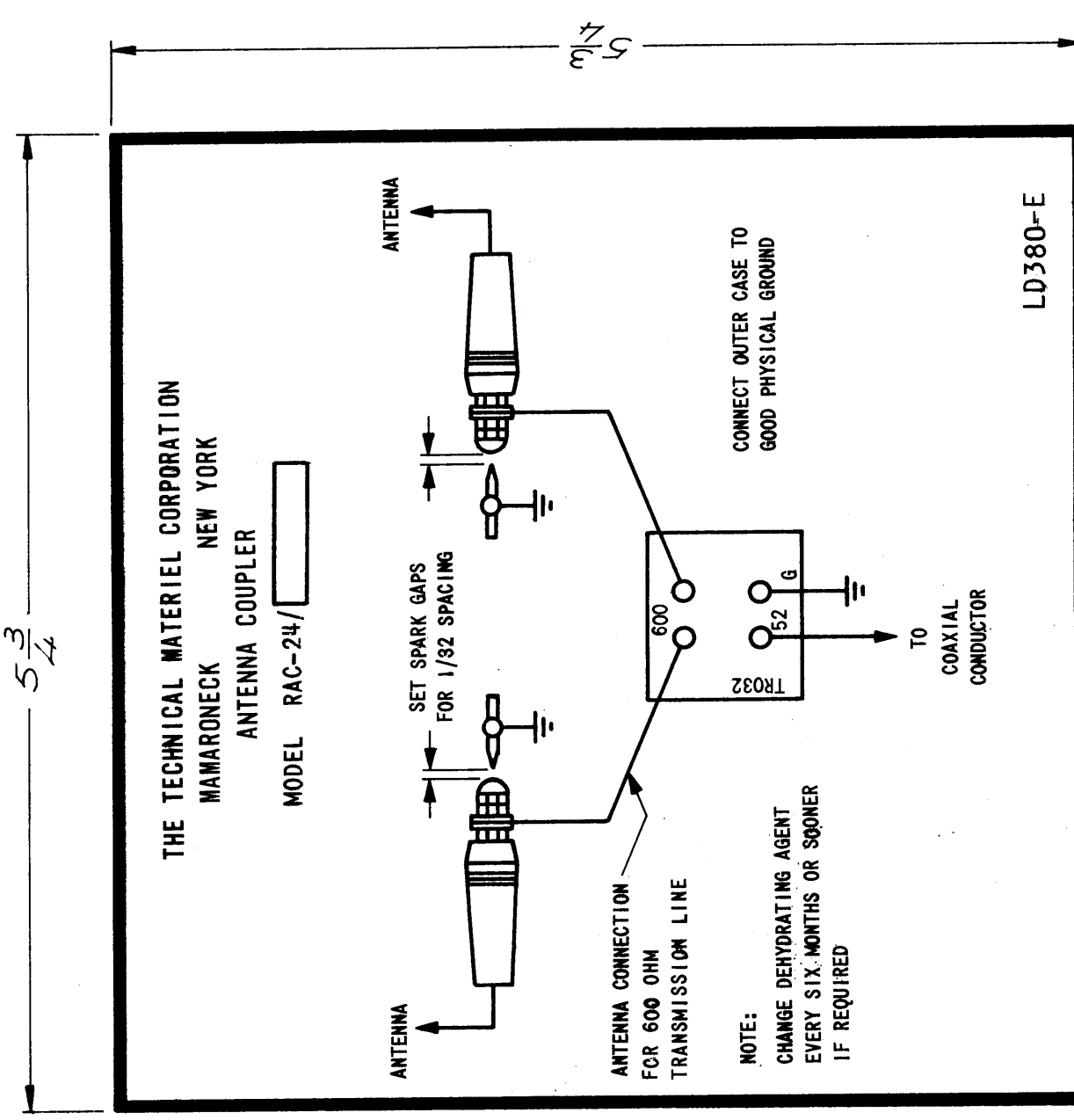
1

D

C

B

A



NOTE:
CHANGE DEHYDRATING AGENT EVERY SIX MONTHS OR SOONER IF REQUIRED

- NOTE:
1. ALL LETTERING AND ARTWORK TO BE BLACK ON ALUMINUM BACKGROUND, WITH ADHESIVE BACKING.
 2. REPRODUCTION METHOD: AS PER TMC SPEC S1222.

REVISIONS

ZONE	LTR	DESCRIPTION	DATE	E.M.N.NO	DRAFT	CHKD	APPD
	E	REDRAWN FW/REV	1/15/58	19578	K.H.		EFM

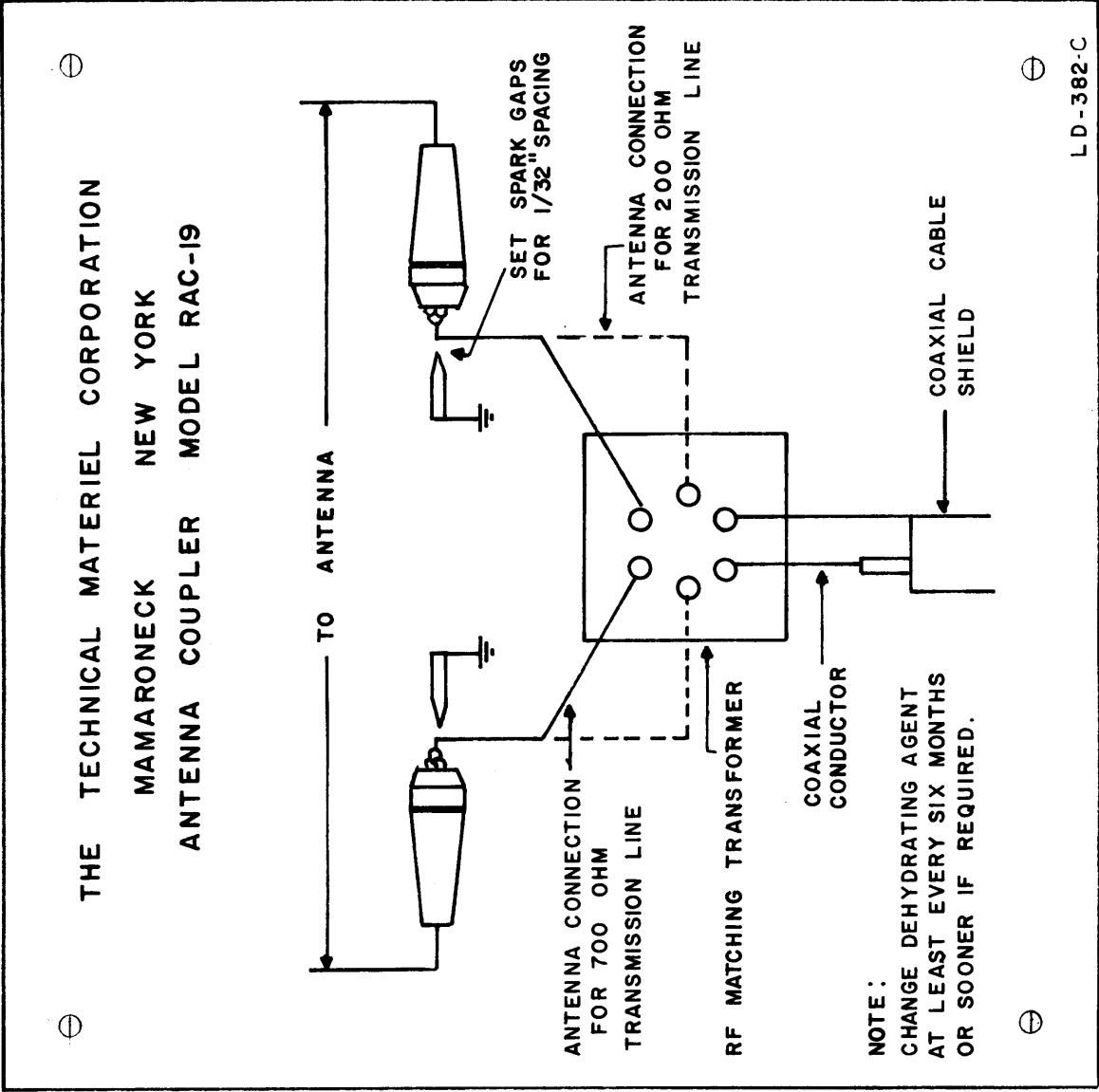
REQ'D ITEM	PART NUMBER	DESCRIPTION	SYM.
LIST OF MATERIAL			
FINAL APPROVAL	A.S.J.	DATE 1/16/58	
MECH. DES.	A.M	DATE 1/15/58	
ELECT. DES.		DATE	
CHECKED		DATE 1/15/58	
DRAWN		DATE	
UNLESS OTHERWISE SPECIFIED DIMENSIONS ARE IN INCHES AND INCLUDE CHEMICALLY APPLIED OR PLATED FINISHES		FRACTIONS 1/64	
DECIMALS	± .05	TOLS.	° 30'
.XX	± .01	ANGLES	
.XXX	± .005		
MATERIAL		FINISH	

THE TECHNICAL MATERIEL CORP.	MAMARONECK, NEW YORK
DIAGRAM, SCHEMATIC	
SIZE B	CODE IDENT. NO. DWG NO. LD 380
SCALE	SHEET OF
	82679
	1

NOTICE TO PERSONS RECEIVING THIS DRAWING
THE TECHNICAL MATERIEL CORPORATION claims proprietary right in the material disclosed hereon. This drawing is issued in confidence for engineering information only and may not be reproduced or used to manufacture anything shown hereon without permission from THE TECHNICAL MATERIEL CORPORATION to the user. This drawing is loaned for mutual assistance and is subject to recall at any time.

D LD-382

6
5 1/4 ± 1/64
1/4



THE TECHNICAL MATERIEL CORPORATION
MAMARONECK NEW YORK
ANTENNA COUPLER MODEL RAC-19

LD-382-C

NOTE:
CHANGE DEHYDRATING AGENT
AT LEAST EVERY SIX MONTHS
OR SOONER IF REQUIRED.

NOTICE TO PERSONS RECEIVING THIS DRAWING
THE TECHNICAL MATERIEL CORPORATION claims
proprietary right in the material disclosed hereon.
This drawing is issued in confidence for engineering
information only and may not be reproduced or used
to manufacture anything shown hereon without per-
mission from THE TECHNICAL MATERIEL CORPORA-
TION to the user. This drawing is loaned for mutual
assistance and is subject to recall at any time.

Property of:
THE TECHNICAL MATERIEL CORPORATION
MAMARONECK, NEW YORK

4 HOLES REQ
7/64 DIA.

NOTE:
1- PRINTED DIRECTLY ON FACE OF
PLASTIC.
2- MATERIAL:
POLISHED WHITE OPAQUE VINYL PLASTIC

D	1	"SUPERSEDED" NOTE ADDED	6-9-64	11509	JTB	@	MMK
C	2	FINISH DELETED MATERIAL CLARIFIED	2-1-63	8168			
B	2	FINISH & NOTE ADDED MATERIAL WAS VINYL PLASTIC	7-18-62	6925			
A	1	2-1-64 ADDED TO 5/4 CHANGED FROM	2-10-61	4076	EL	EL	

TOLERANCES
SCALE: FULL
MAXIMUM ALLOWABLE TOLERANCES HAVE
BEEN DETERMINED AND ANY DEVIATIONS
WILL BE CAUSE FOR REJECTION.
REMOVE ALL BURRS AND SHARP EDGES

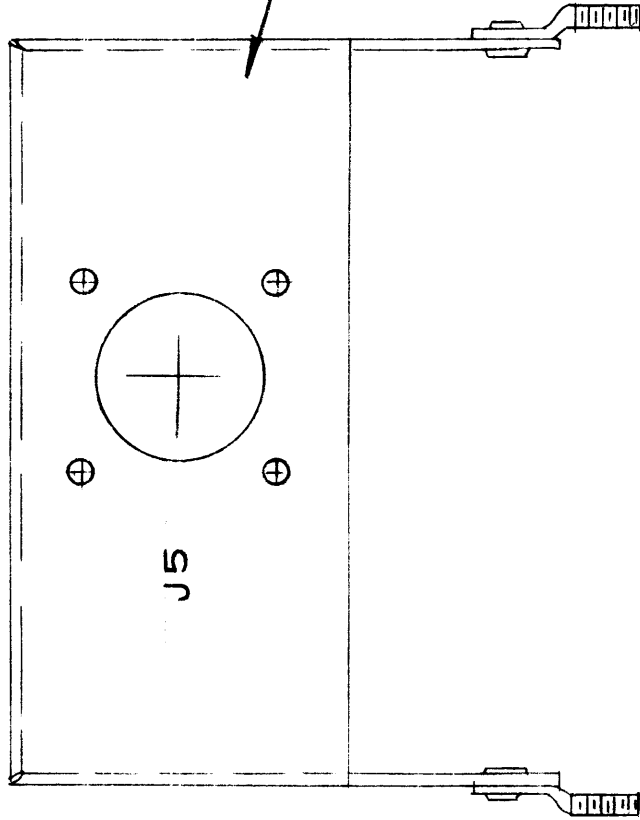
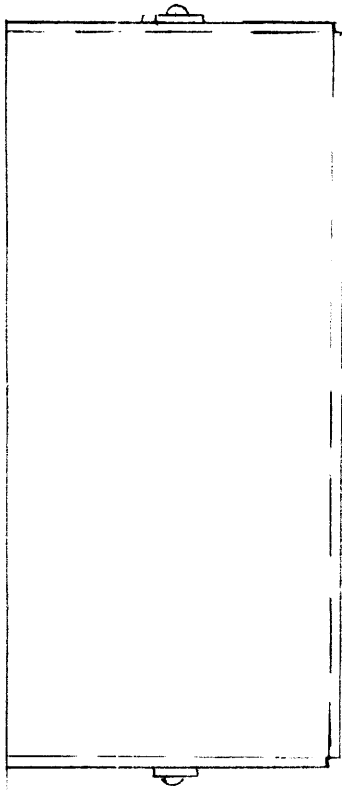
SUPERSEDED

REPLACED BY LD-100

1	RAC-19	2-14-58	DATE
REQ. PER UNIT	MODEL	PROJECT NO.	ASSY. NO.
USED ON			

REQ. ITEM	PART NO.	DESCRIPTION	SYMBOL
	.015	THE TECHNICAL MATERIEL CORP. MAMARONECK, NEW YORK	
	SEE NOTE #2	SCHMATIC DIAGRAM MODEL RAC-19	
		DRAWN 2/19/58 W6	
		CHECKED	FINAL APPROVAL
		ELEC. DES. APP. MECH. DES. APP.	LD-382 D

LD-383



PROPERTY OF THE DRAWING

THE TECHNICAL MATERIEL CORPORATION claims proprietary right in the material disclosed herein. This drawing is loaned in confidence for engineering information only and may not be reproduced or used to manufacture any parts shown herein without permission from THE TECHNICAL MATERIEL CORPORATION to the user. This drawing is loaned for mutual assistance and is subject to recall at any time.

Property of:

THE TECHNICAL MATERIEL CORPORATION
MAMARONECK, NEW YORK

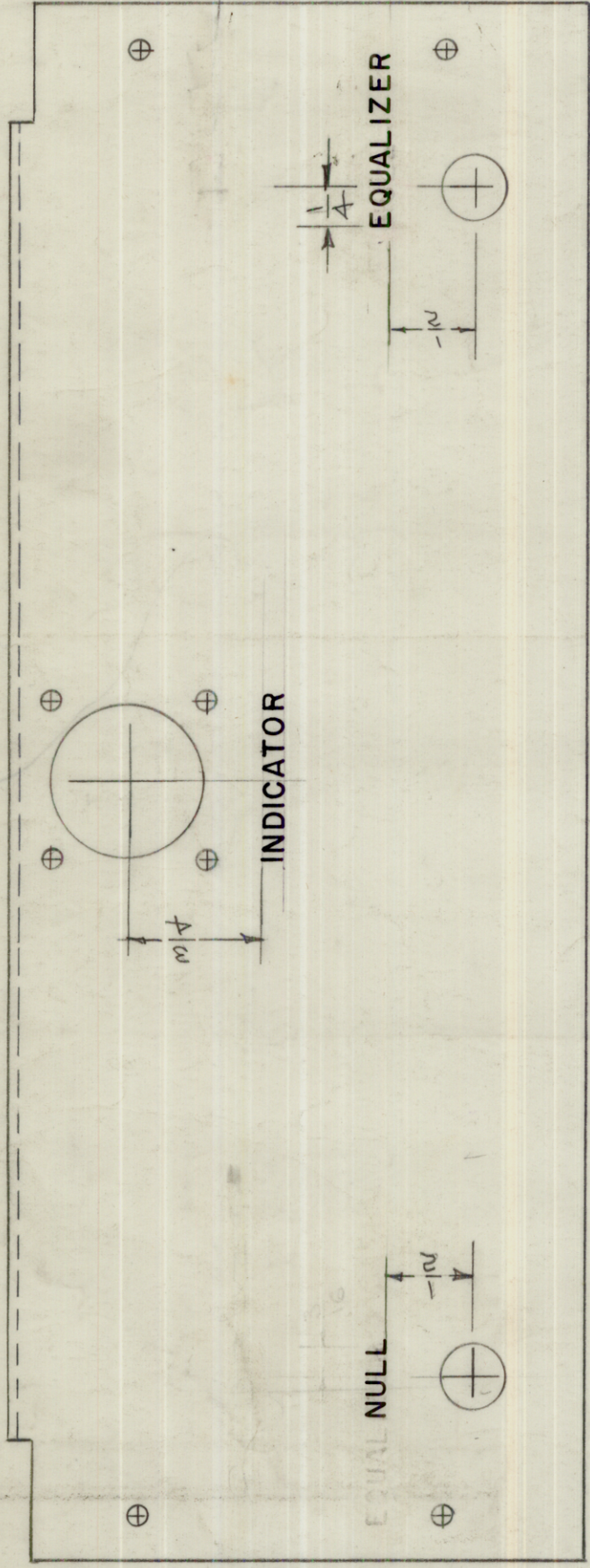
Ref. 2MS-1200 - Machining

REQ. ITEM	PART NO.	DESCRIPTION	SYMBOL
		THE TECHNICAL MATERIEL CORP. MAMARONECK, NEW YORK	
		STAMPING, COVER,	
		CONNECTOR CHASSIS	
	6/3/58	APR 20	AIT
		DRAWN	CHECKED
		TYPE & TEMPER	HEAT TREAT. SPEC.
		FINISH & SPEC. NO.	EMEC. DES. APP. MECH. DES. APP.
			FINAL APPROVAL
			LD-383

1	A-1279-1	3-3-58	DATE
REQ. PER UNIT	MODEL	PROJECT NO.	ASS'Y. NO.
			USED ON

ISSUE ITEM	CHANGED FROM	DATE	CH. NO.	DRAFTS	CHECKER	ENG. APP.
TOLERANCES						
SCALE:						
MAXIMUM ALLOWABLE TOLERANCES HAVE BEEN DETERMINED AND ANY DEVIATIONS WILL BE CAUSE FOR REJECTION. REMOVE ALL BURRS AND SHARP EDGES						
DEC. DIM. ±						
FRAC. DIM. ±						
ANGULAR DIM. ±						

LD-390



NOTICE TO PERSONS RECEIVING THIS DRAWING

THE TECHNICAL MATERIEL CORPORATION claims proprietary right in the material disclosed hereon. This drawing is issued in confidence for engineering information only and may not be reproduced or used to manufacture anything shown hereon without permission from THE TECHNICAL MATERIEL CORPORATION to the user. This drawing is loaned for mutual assistance and is subject to recall at any time.

Property of:

THE TECHNICAL MATERIEL CORPORATION
MAMARONECK, NEW YORK

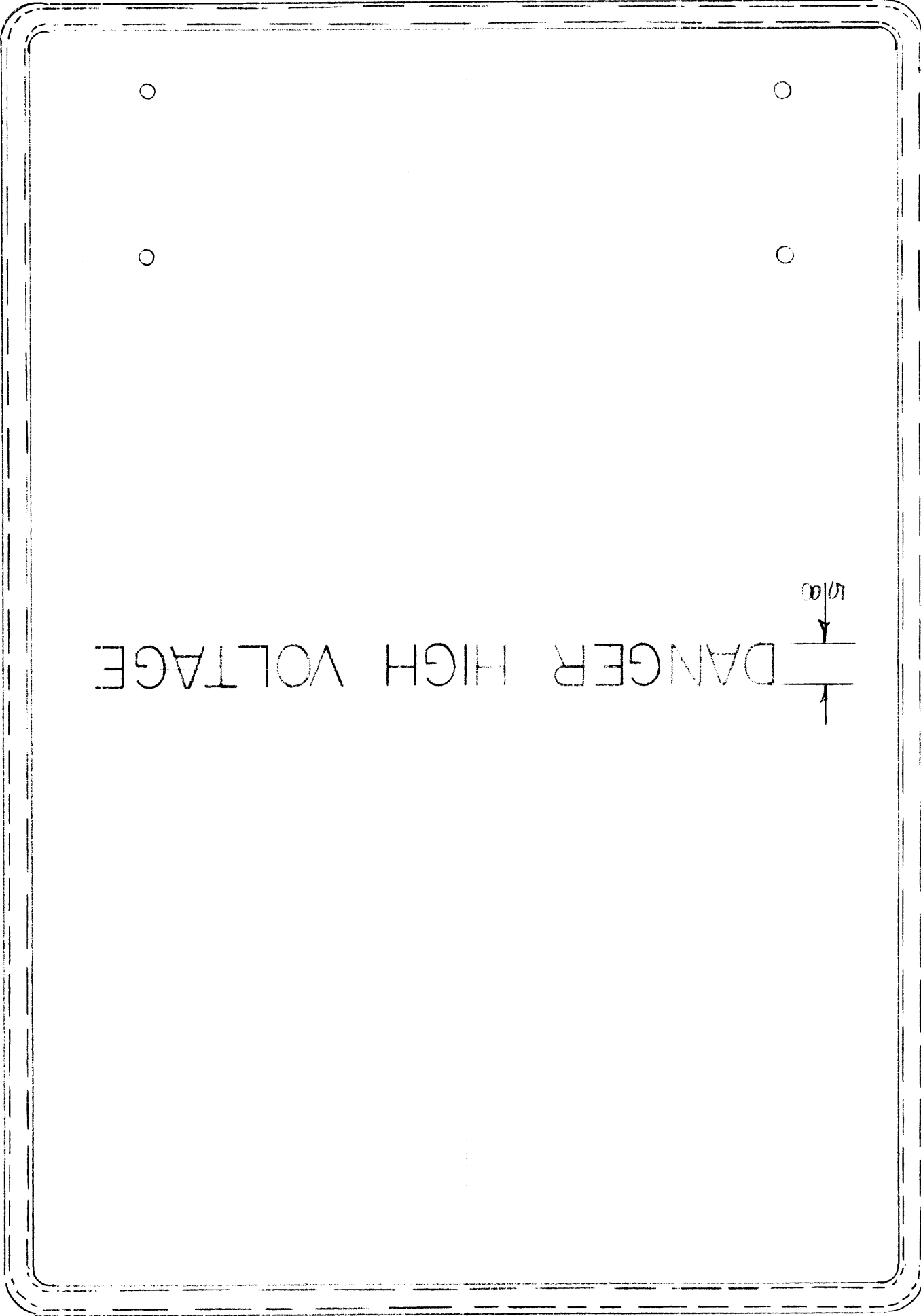
NOTE
ALL LETTERING 1/8 HIGH, WHITE GOTHIC.

MARKING PROCESS: AS PER TMC SPECIFICATION S-727

REF: MS-1180

ISSUE ITEM	CHANGED FROM	DATE	CH. NO.	DRAFTS	CHECKER	ENG. APP.
<p>TOLERANCES</p> <p>DEC. DIM. ±</p> <p>FRAC. DIM. ±</p> <p>ANGULAR DIM. ±</p>						
<p>SCALE:</p> <p>MAXIMUM ALLOWABLE TOLERANCES HAVE BEEN DETERMINED AND ANY DEVIATIONS WILL BE CAUSE FOR REJECTION.</p> <p>REMOVE ALL BURRS AND SHARP EDGES</p>						
1						
REQ. PER UNIT	MODEL	PROJECT NO.	ASS'Y. NO.	DATE		
	ATS-50CU ATS-70CU			3-31-58 3-31-58		
TOLERANCES		MATERIAL		TYPE & TEMPER		HEAT TREAT. SPEC.
		ATS-701CU				
STOCK SIZE		FINISH & SPEC. NO.		ELEC. DES. APP.		MECH. DES. APP.
PART NO.		DESCRIPTION		SYMBOL		
		THE TECHNICAL MATERIEL CORP. MAMARONECK.		NEW YORK		
		LETTERING, WRAP AROUND				
		DRAWN		CHECKED		FINAL APPROVAL
		HDE		GMA		LD-390

LD-392



R EXTERIOR VIEW SHOWN

NOTE
STAMP AS SHOWN ON EXTERIOR &
INTERIOR OF COVER, 5/8 HIGH RED
GOTHIC.

REF: PX-399

ISSUE ITEM	CHANGED FROM	DATE	CH. NO.	DRAFTS	CHECKER	ENG. APP.
TOLERANCES						
SCALE: 1						
MAXIMUM ALLOWABLE TOLERANCES HAVE BEEN DETERMINED AND ANY DEVIATIONS WILL BE CAUSE FOR REJECTION. REMOVE ALL BURRS AND SHARP EDGES						
DEC. DIM. ±						
FRAC. DIM. ±						
ANGULAR DIM. ±						

1	ATS-70-TU	3/31/58				
1	ATS-50-TU	3/31/58				
REQ. PER UNIT	MODEL	DATE	PROJECT NO.	ASSY. NO.	USED ON	

REQ. ITEM	PART NO.	DESCRIPTION	SYMBOL
		THE TECHNICAL MATERIEL CORP. MAMARONECK, NEW YORK	
		STAMPING - COVER	
		MATERIAL	
		TYPE & TEMPER	
		HEAT TREAT. SPEC.	
		DRAWN	
		CHECKED	
		FINAL APPROVAL	
		FINISH & SPEC. NO.	
		ELEC. DES. APP.	
		MECH./DES. APP.	

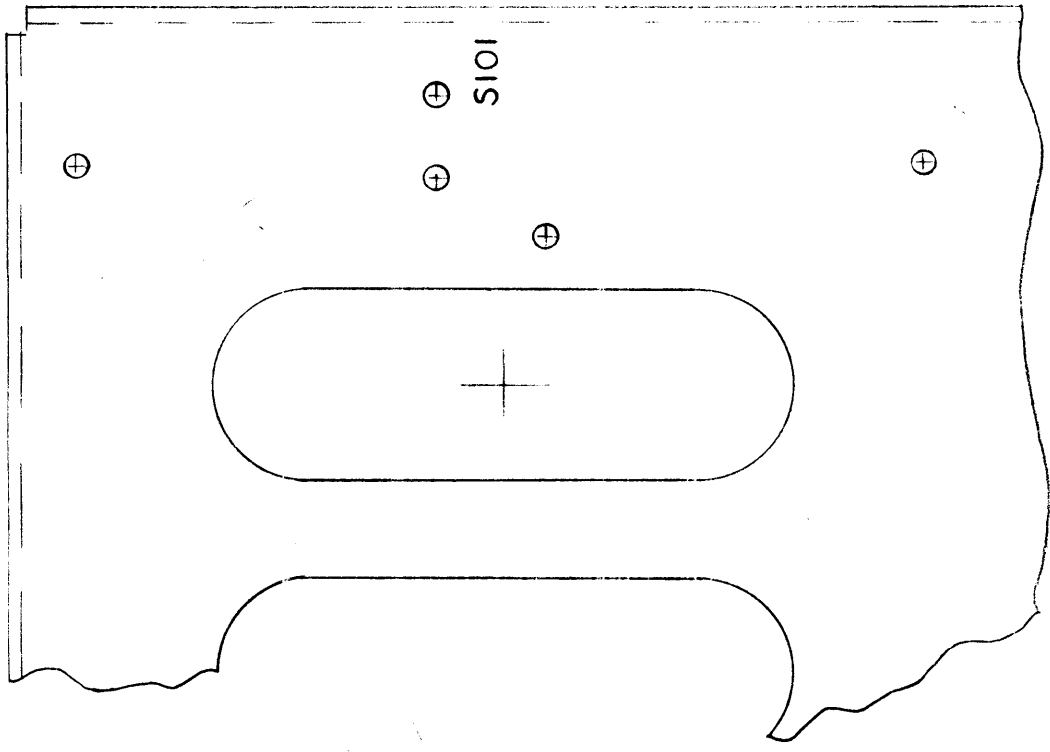
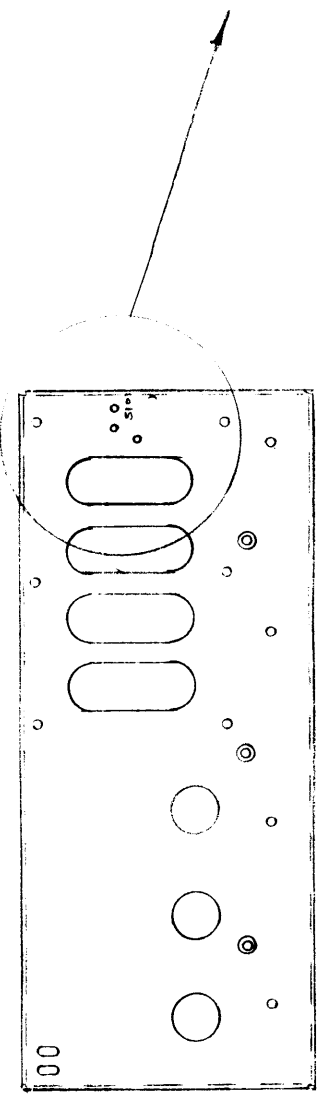
NOT TO BE REPRODUCED WITHOUT PERMISSION OF THE DRAWING ENGINEER

THE TECHNICAL MATERIEL CORPORATION claims proprietary right in the material disclosed herein. This drawing is issued in confidence for engineering information only and may not be reproduced or used to manufacture anything shown hereon without permission from THE TECHNICAL MATERIEL CORPORATION to the user. This drawing is loaned for mutual assistance and is subject to recall at any time.

Property of:
THE TECHNICAL MATERIEL CORPORATION
MAMARONECK, NEW YORK

C 86E-47

Lettering to be 1/8 high black Gothic,
MARKING PROCESS: AS PER TMC SPEC. 2727



OUTSIDE VIEW

NOTICE TO PERSONS RECEIVING THIS DRAWING

THE TECHNICAL MATERIEL CORPORATION claims proprietary right in the material disclosed hereon. This drawing is issued in confidence for engineering information only and may not be reproduced or used to manufacture anything shown hereon without permission from THE TECHNICAL MATERIEL CORPORATION to the user. This drawing is loaned for mutual assistance and is subject to recall at any time.

Property of:
THE TECHNICAL MATERIEL CORPORATION
MAMARONECK, NEW YORK

Ref - MS-1225

ISSUE ITEM	CHANGED FROM	DATE	CH. NO.	DRAFTS	CHECKER	ENG. APP.
C 1	DWG UPDATED & CLARIFIED	11/63	10352			
B 1	Stamping moved up Large Holes Changed	5/5/58	2	16		
A 1	S101 WAS S102	5/14/58	1	16		

TOLERANCES
DEC. DIM. ±
FRAC. DIM. ±
ANGULAR DIM. ±

SCALE:
MAXIMUM ALLOWABLE TOLERANCES HAVE BEEN DETERMINED AND ANY DEVIATIONS WILL BE CAUSE FOR REJECTION.
REMOVE ALL BURRS AND SHARP EDGES

REQ. ITEM	PART NO.	DESCRIPTION	SYMBOL
1	P5P-350A	THE TECHNICAL MATERIEL CORP. MAMARONECK, NEW YORK	C
1	P5P-350		
REQ. PER UNIT	MODEL	LETTERING, RIGHT SIDE PLATE	
ASSY. NO.	PROJECT NO.	DRAWN	
DATE	USED ON	CHECKED	
5-6-58		6/4/58	
		A.T.J.	
		FINAL APPROVAL	
		LD-398	
		ELC. DES. APP. MECH. DES. APP.	