

IF IT IS FOUND DESIRABLE TO CHANGE ANY TOLERANCE OR OTHER DETAIL SPECIFIED ON THIS DRAWING NOTIFY THE PURCHASER PROMPTLY.

LD-303

MAXIMUM ALLOWABLE TOLERANCES HAVE BEEN DETERMINED AND DEVIATIONS WILL BE CAUSE FOR REJECTION. REMOVE ALL BURRS AND SHARP EDGES

USED ON

MODEL

PROJECT NO.

ASS'Y. NO.

DATE

REMOVE MARKINGS

REPLACE WITH

UG-934/U HALLET 20007
 UG-989/U HALLET 20702
 UG-946 HALLET 20005

T M C JJ-136
 T M C JJ-137
 T M C PL-136

REQ.	ITEM	PART NO.	DESCRIPTION	SYMBOL
			THE TECHNICAL MATERIEL CORP.	
			MAMARONECK. NEW YORK	
STOCK SIZE			MARKINGS FOR SPECIAL PLUGS, JACKS, ADAPTERS ETC.	
MATERIAL		WEIGHT PER PC.		
TYPE & TEMPER			CDD	
			DRAWN	MECH. DES. APP.
			<i>Handwritten Signature</i>	<i>Handwritten Signature</i>
HEAT TREAT. SPEC.			FINAL APPROVAL	
			CHECKED	LD-303
FINISH & SPEC. NO.				

ISSUE ITEM CHANGED FROM DATE CN. NO. DRAFTS CHECKER ENG. APP.

TOLERANCES

SCALE

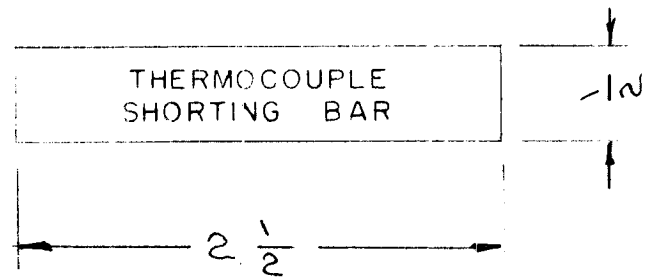
ALL OTHERS:

DEC. DIM. ±
 FRAC. DIM. ±
 ANGULAR DIM. ±

DRILL, PUNCH, COMMERCIAL STOCK SIZES AND MANUFACTURERS TOLERANCES ARE NOT INCLUDED.

REQ. PER UNIT	610	USED ON	
	MODEL	ASS'Y. NO.	DATE
1	RTF		9-6-56
1	RTF-2	P/A	11/20/58

LD-305



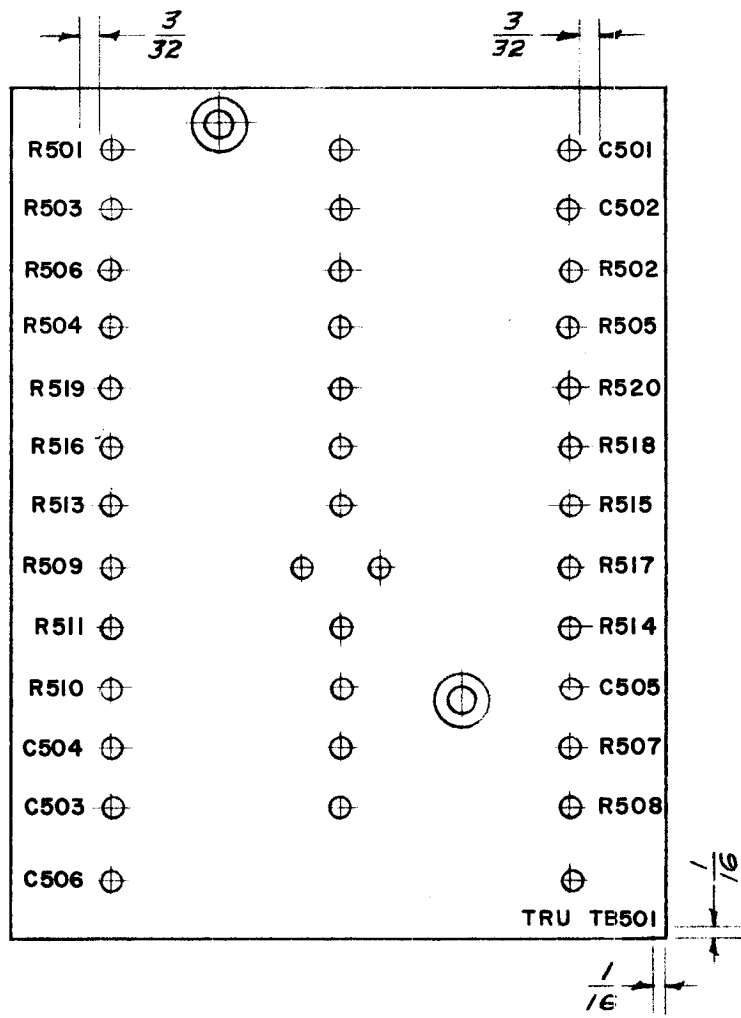
MARKING PROCESS: AS PER T M C SPECIFICATION S-727.

LETTERING: 1/8 HIGH BLACK, GOTHIC LOCATED AS SHOWN.

REF. DWG MS-980

ISSUE	ITEM	CHANGED FROM	DATE	CH. NO.	DRAFTS	CHECKER	ENG. APP.	REQ. ITEM	PART NO.	DESCRIPTION	SYMBOL	
										THE TECHNICAL MATERIEL CORP. MAMARONECK, NEW YORK LETTERING, DIMENSIONS BAR P/A RTF		
									STOCK SIZE			
									MATERIAL			
TOLERANCES			SCALE:							COD 9/6/56 <i>Jade</i>	<i>Wic</i>	
DEC. DIM. ± FRAC. DIM. ± ANGULAR DIM. ±			MAXIMUM ALLOWABLE TOLERANCES HAVE BEEN DETERMINED AND ANY DEVIATIONS WILL BE CAUSE FOR REJECTION. REMOVE ALL BURRS AND SHARP EDGES					TYPE & TEMPER	HEAT TREAT. SPEC.	DRAWN	CHECKED	FINAL APPROVAL
											<i>WMP</i>	LD-305
								FINISH & SPEC. N .		ELEC. DES. APP.	MECH. DES. APP.	

REQ. PER UNIT	USED ON			LD-322
	MODEL	ASS'Y. NO.	DATE	
1	TRU	1A-1372	1-21-57	



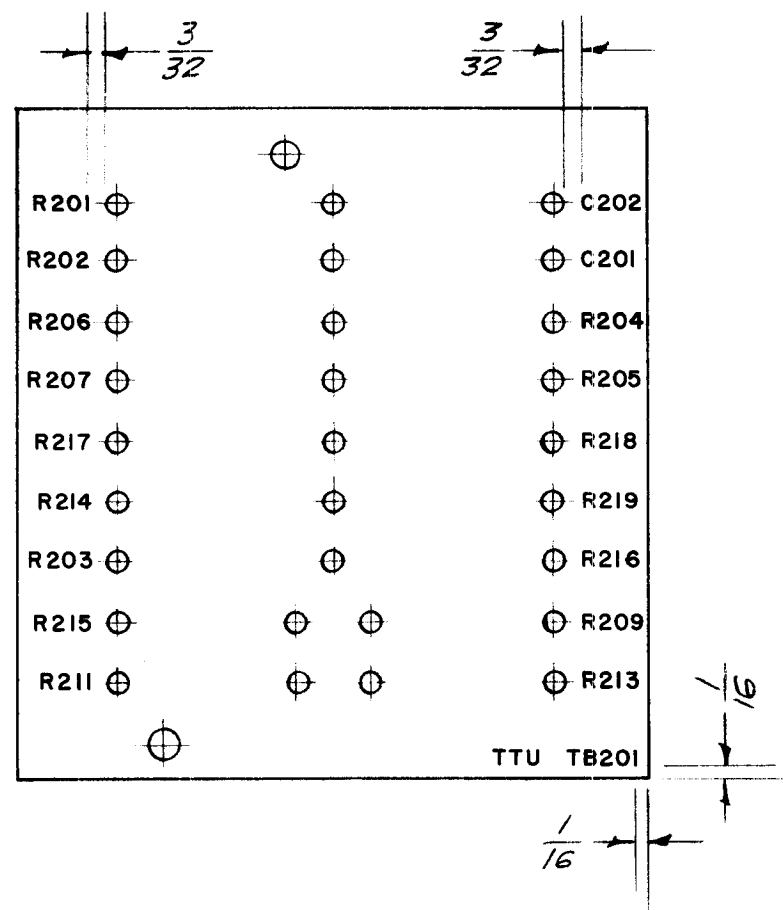
NOTE:
 Lettering to be $\frac{3}{32}$ high black Gothic, coated with S-113, Fungus Resistant Varnish, before lugs are staked.

MARKING PROCESS: AS PER T M C SPECIFICATION S-727.

Ref: A-1372 (1 size)

REQ.	ITEM	PART NO.	DESCRIPTION			SYMBOL	
			THE TECHNICAL MATERIEL CORP. MAMARONECK, NEW YORK				
			STOCK SIZE				
			TERMINAL BOARD				
			LETTERING (TB501) TRU				
			MATERIAL				
ISSUE	ITEM	CHANGED FROM	DATE	CH. NO.	DRAFTS	CHECKER	ENG. APP.
TOLERANCES			SCALE:				
DEC. DIM. \pm			MAXIMUM ALLOWABLE TOLERANCES HAVE BEEN DETERMINED AND ANY DEVIATIONS WILL BE CAUSE FOR REJECTION.				
FRAC. DIM. \pm			REMOVE ALL BURRS AND SHARP EDGES				
ANGULAR DIM. \pm							
TYPE & TEMPER		HEAT TREAT. SPEC.		DRAWN		CHECKED	
				161-21-57		AJJ	
FINISH & SPEC. NO.		ELEC. DES. APP.		MECH. DES. APP.		LD-322	

REQ. PER UNIT	USED ON			LD-323
	MODEL	ASS'Y. NO.	DATE	
1	TTU	1A-1371	1-21-57	



NOTE:
 Lettering to be 3/32 high black Gothic,
 coated with S-113, Fungus Resistant
 Varnish, before lugs are staked.

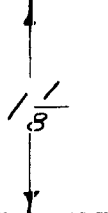
WARNING PROCESS AS PER T.M.C. SPECIFICATION S-121.

Ref: A-1371 (1 size)

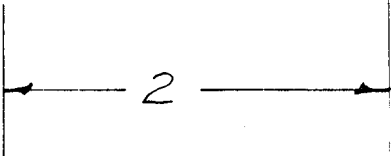
REQ.	ITEM	PART NO.	DESCRIPTION	SYMBOL					
			THE TECHNICAL MATERIEL CORP. MAMARONECK. NEW YORK						
		STOCK SIZE	TTU TERMINAL BOARD						
		MATERIAL	LETTERING (TB201)						
ISSUE	ITEM	CHANGED FROM	DATE	CH. NO.	DRAFTS	CHECKER	ENG. APP.		
TOLERANCES			SCALE:						
DEC. DIM. ±			MAXIMUM ALLOWABLE TOLERANCES HAVE BEEN DETERMINED AND ANY DEVIATIONS WILL BE CAUSE FOR REJECTION.						
FRAC. DIM. ± 1/64			REMOVE ALL BURRS AND SHARP EDGES						
ANGULAR DIM. ±			TYPE & TEMPER	HEAT TREAT. SPEC.	DRAWN	CHECKED	FINAL APPROVAL		
			FINISH & SPEC. NO.	ELEC. DES. APP.	MECH. DES. APP.	LD-323			

REQ. PER UNIT	USED ON			LD-330
	MODEL	ASS'Y. NO.	DATE	
1	TTU		2-4-57	

TONE TRANSMIT UNIT
 MODEL TTU
 SERIAL NO.
 THE TECHNICAL MATERIEL CORPORATION
 MAMARONECK NEW YORK



Serial No. Block - 3/16 x 1/2



Note: Lettering - Gothic Type
Size - Approx. as shown.

ISSUE	ITEM	CHANGED FROM	DATE	CH. NO.	DRAFTS	CHECKER	ENG. APP.	REQ. ITEM	PART NO.	DESCRIPTION	SYMBOL	
										THE TECHNICAL MATERIEL CORP. MAMARONECK. NEW YORK RUBBER STAMP, NAMEPLATE Model TTU		
									STOCK SIZE			
									MATERIAL			
TOLERANCES			SCALE: FULL							162-4-57		
DEC. DIM. ± FRAC. DIM. ± 1/64 ANGULAR DIM. ±			MAXIMUM ALLOWABLE TOLERANCES HAVE BEEN DETERMINED AND ANY DEVIATIONS WILL BE CAUSE FOR REJECTION. REMOVE ALL BURRS AND SHARP EDGES									LD-330
										FINISH & SPEC. NO.	ELEC. DES. APP.	MECH. DES. APP.

REQ. PER UNIT	USED ON			LD-331
	MODEL	ASS'Y. NO.	DATE	
1	TRU		2-4-57	

TONE RECEIVE UNIT
 MODEL TRU
 SERIAL NO.
 THE TECHNICAL MATERIEL CORPORATION
 MAMARONECK NEW YORK

↑
1/8
↓

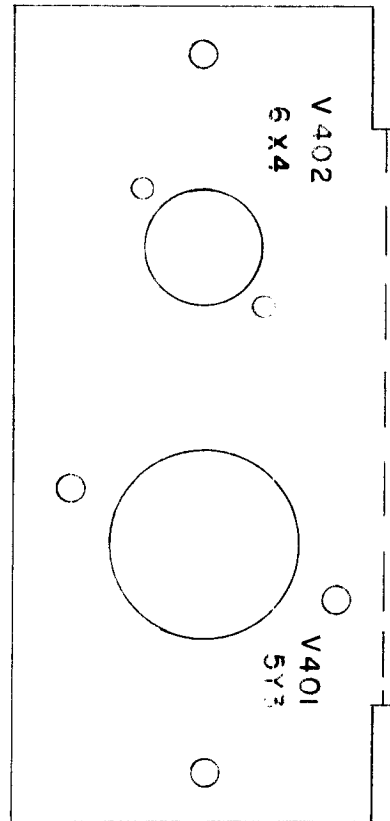
← 2 →

Serial No. Block 3/16 x 1/2

Note: Lettering-Gothic Type
Size - Approx. as shown.

REQ.	ITEM	PART NO.	DESCRIPTION		SYMBOL		
			THE TECHNICAL MATERIEL CORP. MAMARONECK. NEW YORK				
			RUBBER STAMP, NAMEPLATE Model TRU				
			Model TRU				
			Model TRU				
ISSUE	ITEM	CHANGED FROM	DATE	CH. NO.	DRAFTS	CHECKER	ENG. APP.
TOLERANCES			SCALE: FULL				
DEC. DIM. ±			MAXIMUM ALLOWABLE TOLERANCES HAVE BEEN DETERMINED AND ANY DEVIATIONS WILL BE CAUSE FOR REJECTION. REMOVE ALL BURRS AND SHARP EDGES				
FRAC. DIM. ± 1/64							
ANGULAR DIM. ±							
TYPE & TEMPER		HEAT TREAT. SPEC.	DRAWN		CHECKED	FINAL APPROVAL	
			1624-57			A. J. J.	
FINISH & SPEC. NO.		ELEC. DES. APP.	MECH. DES. APP.		LD-331		

REQ. PER UNIT	USED ON			LD336
	MODEL	ASS'Y. NO.	DATE	
1	TSR		2-27-57	



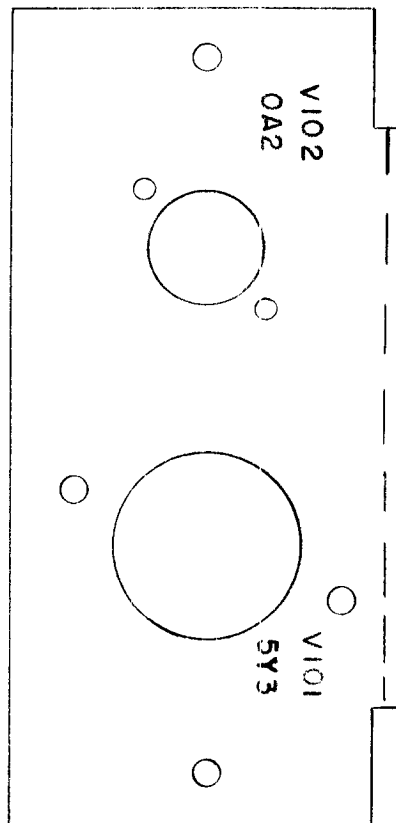
MARKING PROCESS: AS PER T.M.C. SPECIFICATION S-727

*Lettering to be 1/8" high Black Gothic
Stamping to be done after the
assembly of components.*

REF: MS-1013

REQ. ITEM	PART NO.	DESCRIPTION	SYMBOL
	.051	THE TECHNICAL MATERIEL CORP. MAMARONECK. NEW YORK	
	STOCK SIZE	TUBE CHASSIS STAMPING	
	ALUMINUM	MODEL TSR	
	MATERIAL		
ISSUE	ITEM	CHANGED FROM	DATE
TOLERANCES		SCALE:	
DEC. DIM. ±	MAXIMUM ALLOWABLE TOLERANCES HAVE BEEN DETERMINED AND ANY DEVIATIONS WILL BE CAUSE FOR REJECTION.		
FRAC. DIM. ±	REMOVE ALL BURRS AND SHARP EDGES		
ANGULAR DIM. ±			
	TYPE & TEMPER	HEAT TREAT. SPEC.	DRAWN
			CHECKED
	FINISH & SPEC. NO.	ELEC. DES. APP.	MECH. DES. APP.
			LD-336

REQ. PER UNIT	USED ON			LD 339
	MODEL	ASS'Y. NO.	DATE	
1	TST		2-27-57	



MARKING PROCESS AS PER T.M.C. SPECIFICATION 4727

Lettering to be $\frac{1}{8}$ " high Black Gothic
Stamping to be done after
assembly of components.

REF. MS-1013

ISSUE	ITEM	CHANGED FROM	DATE	CH. NO.	DRAFTS	CHECKER	ENG. APP.	REQ.	ITEM	PART NO.	DESCRIPTION	SYMBOL	
											THE TECHNICAL MATERIEL CORP. MAMARONECK, NEW YORK <i>TUBE CHASSIS STAMPING</i> <i>MODEL TST</i>		
										STOCK SIZE			
										MATERIAL			
TOLERANCES			SCALE:								SPC	JMS	A.J.S.
DEC. DIM. \pm			MAXIMUM ALLOWABLE TOLERANCES HAVE BEEN DETERMINED AND ANY DEVIATIONS WILL BE CAUSE FOR REJECTION. REMOVE ALL BURRS AND SHARP EDGES					TYPE & TEMPER	HEAT TREAT. SPEC.	DRAWN	CHECKED	FINAL APPROVAL	
FRAC. DIM. \pm													
ANGULAR DIM. \pm								FINISH & SPEC. NO.	ELEC. DES. APP.	MECH. DES. APP.		LD 339	

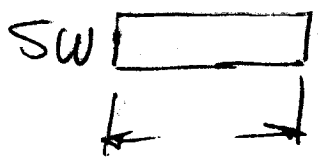
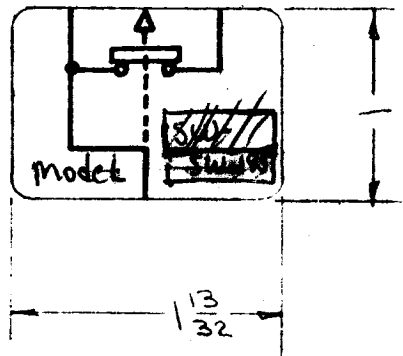
REQ. PER UNIT	USE ON		
	MODEL	ASSY. NO.	DATE
1	SW-195	A-1433	6-24-57
	SW-195	A-1433	6-24-58

~~LD-346~~

20/96

NP-XXX-
LD-346

8



model
SW-195

Aluminum foil

All lettering to ~~be~~
 slick
 Background to be aluminum ~~oxidized~~
 Adhesive - Banking
 Applicator Paint surface

Replaced By
NP-226
5/8/58

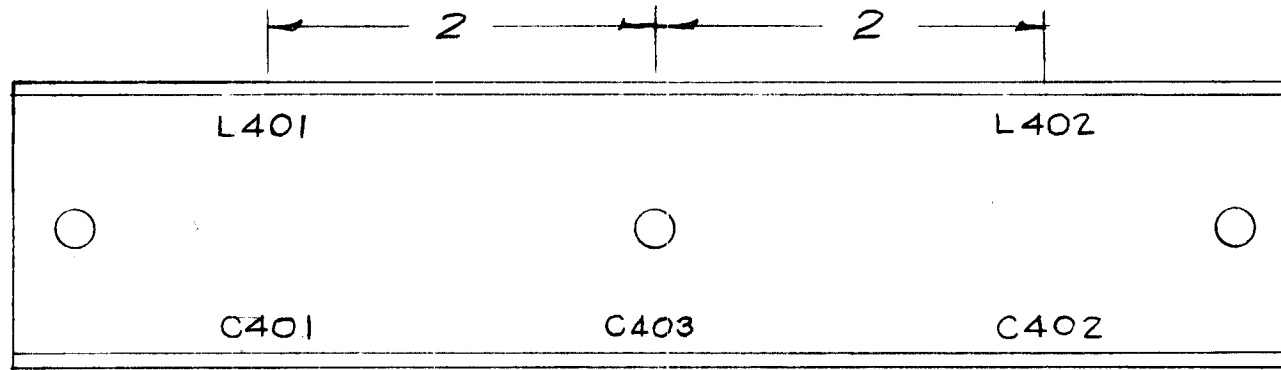
Ref-CK-344

ISSUE	ITEM	CHANGED FROM	DATE	CH. NO.	DRAFTS	CHECKER	ENG. APP.	REQ. ITEM	PART NO.	DESCRIPTION	SYMBOL	
										THE TECHNICAL MATERIEL CORP. MAMARONECK. NEW YORK STAMP, SCHEMATIC, RUBBER		
									0037.005 STOCK SIZE RUBBER STAMP			
									MATERIAL			
TOLERANCES			SCALE:									
DEC. DIM. ± FRAC. DIM. ± ANGULAR DIM. ±			MAXIMUM ALLOWABLE TOLERANCES HAVE BEEN DETERMINED AND ANY DEVIATIONS WILL BE CAUSE FOR REJECTION. REMOVE ALL BURRS AND SHARP EDGES									
								TYPE & TEMPER	HEAT TREAT. SPEC.	DRAWN	CHECKED	FINAL APPROVAL
								See Note				
								FINISH & SPEC. N.	ELEC. DES. APP.	MECH. DES. APP.		

LD-346

REQ. PER UNIT	USED ON		
	MODEL	ASS'Y. NO.	DATE
1	A-1397		7-22-57
1	SBE-2		5-5-58
1	CPP-1		5-20-60

LD-354 A



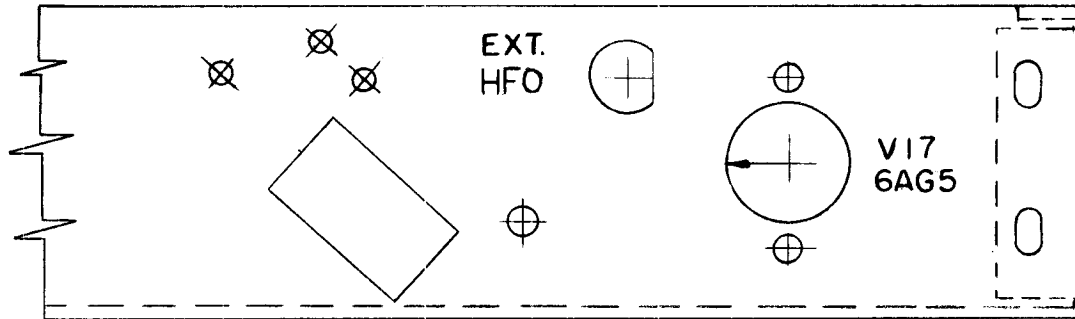
MARKING PROCESS: AS PER TMC SPECIFICATION S-727

LETTERING: 1/8 HIGH BLACK, GOTHIC
LOCATED AS SHOWN.

Ref - MS-1054 (Machining)

ISSUE	ITEM	CHANGED FROM	DATE	CH. NO.	DRAFTS	CHECKER	ENG. APP.	REQ. ITEM	PART NO.	DESCRIPTION	SYMBOL			
										THE TECHNICAL MATERIEL CORP. MAMARONECK. NEW YORK				
									STOCK SIZE	STAMPING, CAP. SHIELD				
A		L401, L402, C401, C402 & C403 Relocated	1-30-61	4024	Ru	JCB	SPM			A-1397				
									MATERIAL					
TOLERANCES			SCALE:							16 7-22-57				
DEC. DIM. ± FRAC. DIM. ± ANGULAR DIM. ±			MAXIMUM ALLOWABLE TOLERANCES HAVE BEEN DETERMINED AND ANY DEVIATIONS WILL BE CAUSE FOR REJECTION. REMOVE ALL BURRS AND SHARP ED ES							TYPE & TEMPER	HEAT TREAT. SPEC.	DRAWN	CHECKED	FINAL APPROVAL
										FINISH & SPEC. NO.	ELEC. DES. APP.	MECH. DES. APP.	LD-354	A

REQ. PER UNIT	USED ON			LD-367	B
	MODEL	ASS'Y. NO.	DATE		
1	GPR 90RX		8-28-57		



REAR VIEW

MARKING PROCESS: AS PER T M C SPECIFICATION S-72Z

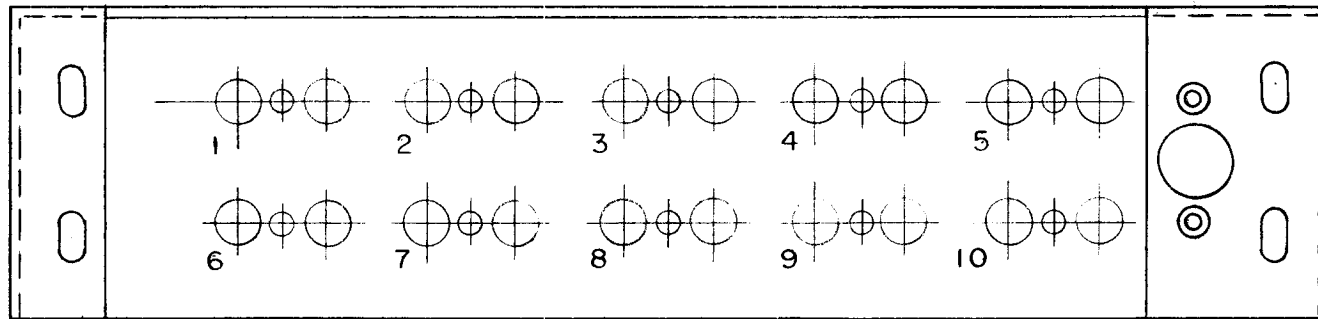
LETTERING: 1/8 HIGH BLACK, GOTHIC LOCATED AS SHOWN.

REF. MS-1130

REQ.	ITEM	PART NO.	DESCRIPTION				SYMBOL
B	1		REVISED HOLE LOCATION & CONFIGURATIONS.				
	2		"HFO" ADDED, (O) DELETED ON V17				
A	1		ON NOTE "STAMPING TO BE DONE AFTER ASSEMBLY OF COMPONENTS" DELETED				
ISSUE	ITEM	CHANGED FROM	DATE	CH. NO.	DRAFTS	CHECKER	ENG. APP.
TOLERANCES			SCALE:				
DEC. DIM. ±			MAXIMUM ALLOWABLE TOLERANCES HAVE BEEN DETERMINED AND ANY DEVIATIONS WILL BE CAUSE FOR REJECTION. REMOVE ALL BURRS AND SHARP EDGES				
FRAC. DIM. ±							
ANGULAR DIM. ±							
TYPE & TEMPER		HEAT TREAT. SPEC.	DRAWN		CHECKED	FINAL APPROVAL	
FINISH & SPEC. NO.		ELEC. DES. APP.	MECH. DES. APP.		LD-367 B		

THE TECHNICAL MATERIEL CORP. PROPRIETARY
 THIS DRAWING IS ISSUED IN ACCORDANCE WITH THE DRAWING SPECIFICATION AND MAY NOT BE REPRODUCED OR TRANSMITTED IN ANY FORM OR BY ANY MEANS, ELECTRONIC OR MECHANICAL, INCLUDING PHOTOCOPYING, RECORDING, OR BY ANY INFORMATION STORAGE AND RETRIEVAL SYSTEM, WITHOUT THE WRITTEN PERMISSION OF THE TECHNICAL MATERIEL CORPORATION.
 MAMARONECK, NEW YORK

REQ. PER UNIT	USED ON			LD-368
	MODEL	ASS'Y. NO.	DATE	
1	GPR 90 RX		8-28-57	



MARKING PROCESS: AS PER TMC SPECIFICATION S-727.

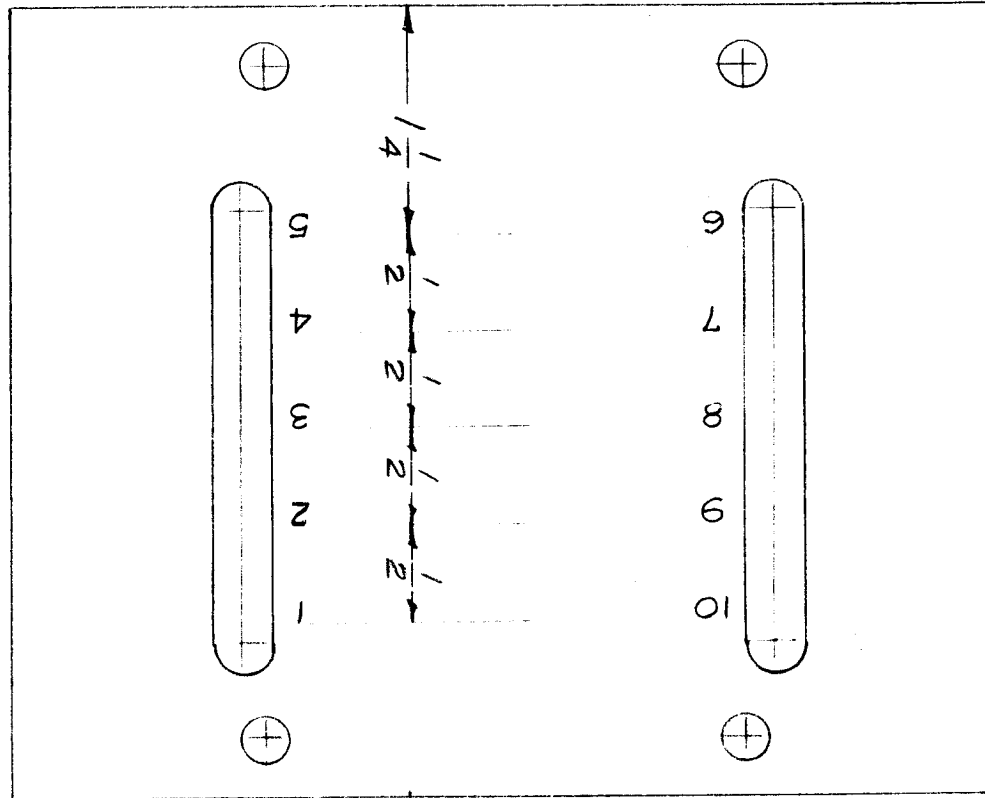
NOTE: Lettering is to be
 1/8" high Black Gothic.
 Stamping to be done after
 assembly of components.

REF: MS-1132 (2)

ISSUE	ITEM	CHANGED FROM	DATE	CH. NO.	DRAFTS	CHECKER	ENG. APP.	REQ. ITEM	PART NO.	DESCRIPTION	SYMBOL	
								— H —		THE TECHNICAL MATERIEL CORP. MAMARONECK, NEW YORK XTAL CHASSIS, LETTERING GPR 90 RX		
								STOCK SIZE				
								— H —				
								MATERIAL				
								— H —	— H —	8.8-28-57	AJJ	
								TYPE & TEMPER	HEAT TREAT. SPEC.	DRAWN	CHECKED	FINAL APPROVAL
								— H —				LD-368
								FINISH & SPEC. NO.		ELEC. DES. APP.	MECH. DES. APP.	

REQ. PER UNIT	USED ON		
	MODEL	ASS'Y. NO.	DATE
1	SBE-1		9-30-57
1	SBE-2		5-5-58
1	SBE-3	AO-102	12-2-59

LD-371

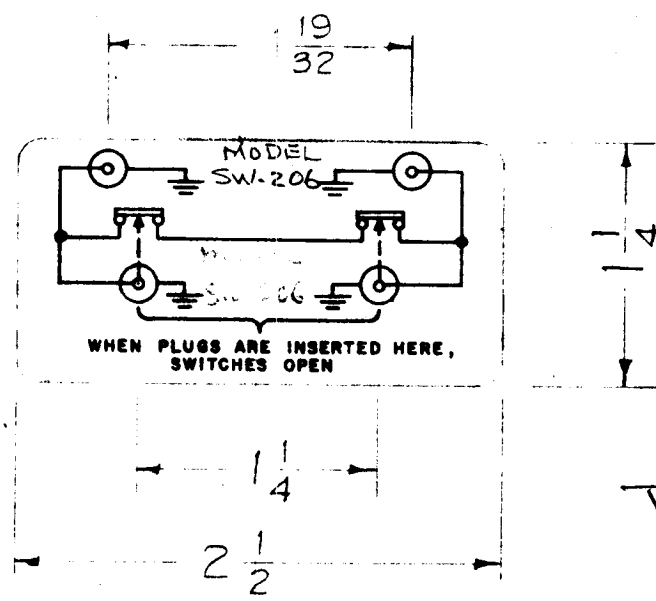


LETTERING TO BE $\frac{1}{8}$ HIGH BLACK GOTHIC.
 MARKING PROCESS: AS PER TMC SPECIFICATION S-727
 Ref. MS-1106(2)

								REQ. ITEM	PART NO.	DESCRIPTION	SYMBOL		
										THE TECHNICAL MATERIEL CORP. MAMARONECK, NEW YORK			
								STOCK SIZE		STAMPING, TOP COVER, XTAL OVEN			
								MATERIAL					
ISSUE	ITEM	CHANGED FROM	DATE	CH. NO.	DRAFTS	CHECKER	ENG. APP.			16 9/30/57	RWB	Alt	
TOLERANCES			SCALE:					TYPE & TEMPER		HEAT TREAT. SPEC.	DRAWN	CHECKED	FINAL APPROVAL
DEC. DIM. \pm FRAC. DIM. \pm ANGULAR DIM. \pm			MAXIMUM ALLOWABLE TOLERANCES HAVE BEEN DETERMINED AND ANY DEVIATIONS WILL BE CAUSE FOR REJECTION. REMOVE ALL BURRS AND SHARP EDGES									23	LD-371
								FINISH & SPEC. NO.		ELEC. DES. APP.	MECH. DES. APP.		

REQ. PER UNIT	USED ON			ED-375
	MODEL	ASS'Y. NO.	DATE	
1	SW-206	A-1489	12-24-57	

NP-375



Replaced by
NP-225

NP-

Note: All lettering ~~and~~ symbols & borders to be black, ~~approx size shown~~. Background to be aluminum, *anodized*

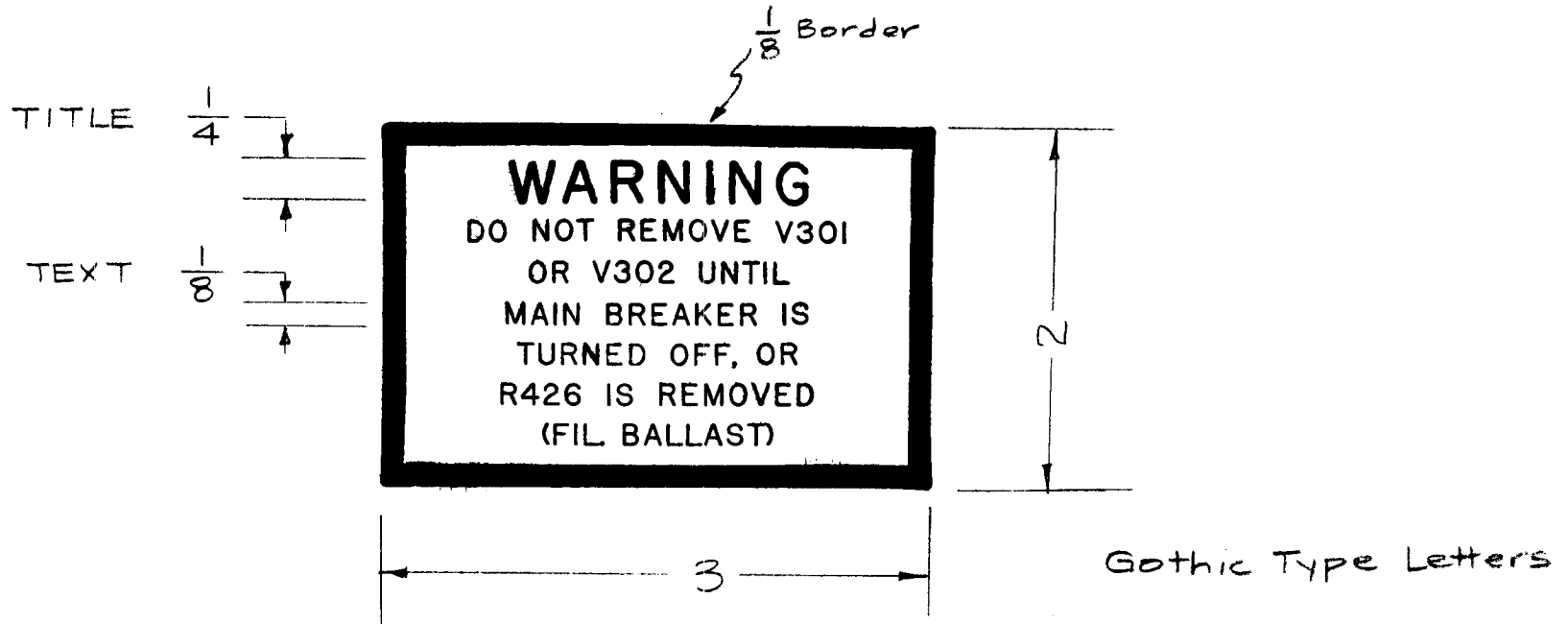
Adhesive Backing

*Application: to painted surfaces
Painted Surface.*

							REQ. ITEM	PART NO.	DESCRIPTION	SYMBOL				
							003 to 005		THE TECHNICAL MATERIEL CORP. MAMARONECK, NEW YORK					
							STOCK SIZE		SCHMATIC DIAGRAM					
							Aluminum Foil.							
							MATERIAL							
ISSUE ITEM	CHANGED FROM	DATE	CH. NO.	DRAFTS	CHECKER	ENG. APP.	Anodized	K6 ^{12/24/57}	<i>H.R.</i>	<i>A.J.S.</i>				
TOLERANCES		SCALE: FULL					TYPE & TEMPER	HEAT TREAT. SPEC.	DRAWN	CHECKED	FINAL APPROVAL			
DEC. DIM. ±		MAXIMUM ALLOWABLE TOLERANCES HAVE BEEN DETERMINED AND ANY DEVIATIONS WILL BE CAUSE FOR REJECTION. REMOVE ALL BURRS AND SHARP EDGES					SEE NOTE							
FRAC. DIM. ± 1/64							FINISH & SPEC. N		ELEC. DES. APP.	MECH. DES. APP.	ED-375			
ANGULAR DIM. ±														

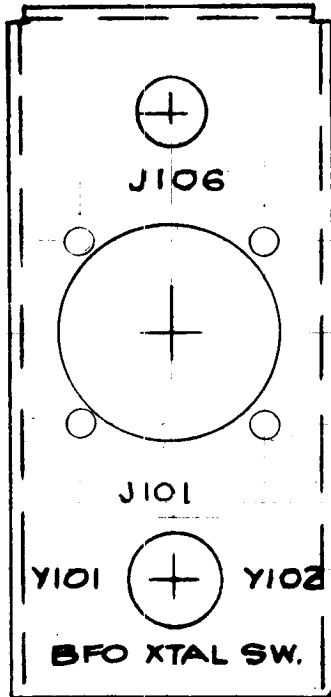
NP-375

REQ. PER UNIT	USED ON			LD-377
	MODEL	ASS'Y. NO.	DATE	
1	RTF	LD-272	1-10-58	



								REQ.	ITEM	PART NO.	DESCRIPTION			SYMBOL			
											THE TECHNICAL MATERIEL CORP. MAMARONECK. NEW YORK						
								STOCK SIZE			STAMP, WARNING,						
								RUBBER			V301, V302 (RTF)						
								MATERIAL									
ISSUE	ITEM	CHANGED FROM	DATE	CH. NO.	DRAFTS	CHECKER	ENG. APP.			16/10/58	JAW	AJT					
TOLERANCES			SCALE: FULL							DRAWN	CHECKED	FINAL APPROVAL					
DEC. DIM. ±			MAXIMUM ALLOWABLE TOLERANCES HAVE BEEN DETERMINED AND ANY DEVIATIONS WILL BE CAUSE FOR REJECTION. REMOVE ALL BURRS AND SHARP EDGES					TYPE & TEMPER		HEAT TREAT. SPEC.		ELEC. DES. APP.		MECH. DES. APP.			
FRAC. DIM. ± 1/64																	
ANGULAR DIM. ±																	
								FINISH & SPEC. NO.		ELEC. DES. APP.		MECH. DES. APP.		LD-377			

REQ. PER UNIT	USED ON			LD-378	A
	MODEL	ASS'Y. NO.	DATE		
1	VOX-1,2	A-594	1-10-58		



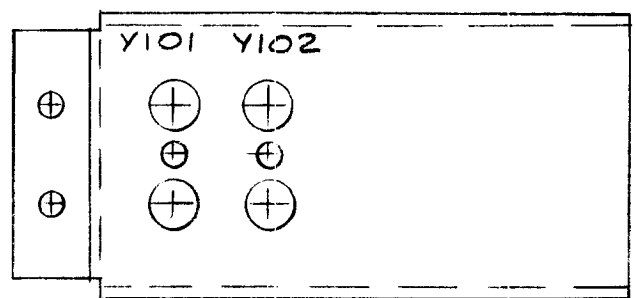
Stamp 1/8 High Black Gothic As Shown
 MARKING PROCESS: AS PER TMC SPECIFICATION S-727

Ref-MS-296 (Bracket)

							REQ. ITEM	PART NO.	DESCRIPTION	SYMBOL	
									THE TECHNICAL MATERIEL CORP. MAMARONECK. NEW YORK		
							STOCK SIZE		STAMPING, PLUG BRACKET		
A	1	J101 MTG. CHGD	6/19/58	1406	ec	pl	dh				
ISSUE	ITEM	CHANGED FROM	DATE	CH. NO.	DRAFTS	CHECKER	ENG. APP.	MATERIAL			
TOLERANCES			SCALE:						16'10/3	JAJ	
DEC. DIM. ±			MAXIMUM ALLOWABLE TOLERANCES HAVE BEEN DETERMINED AND ANY DEVIATIONS WILL BE CAUSE FOR REJECTION. REMOVE ALL BURRS AND SHARP EDGES				TYPE & TEMPER	HEAT TREAT. SPEC.	DRAWN	CHECKED	FINAL APPROVAL
FRAC. DIM. ±											
ANGULAR DIM. ±							FINISH & SPEC. NO.	ELEC. DES. APP.	MECH. DES. APP.	LD-378	A

REQ. PER UNIT	USED ON			LD-379
	MODEL	ASSY. NO.	DATE	
1	VOX-1,2	A-594	1-10-58	

STAMP 1/8 HIGH BLK. GOTHIC AS SHOWN
 MARKING PROCESS: AS PER TMC SPECIFICATION S-727

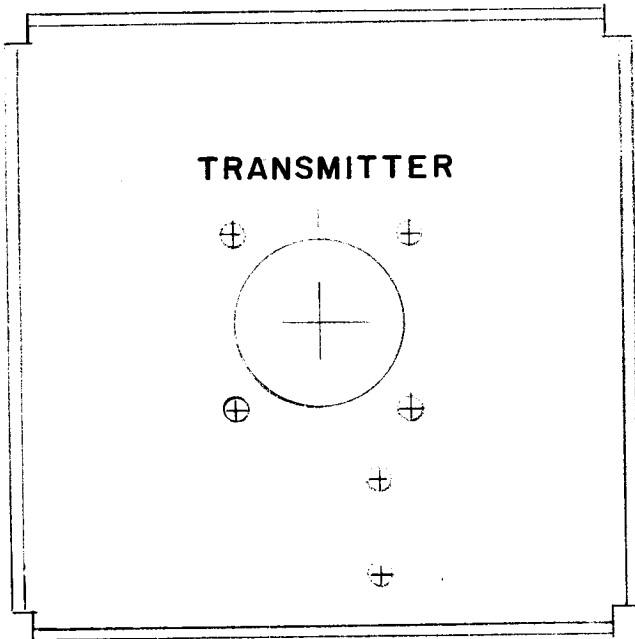


Ref-MS-299 (Bracket)

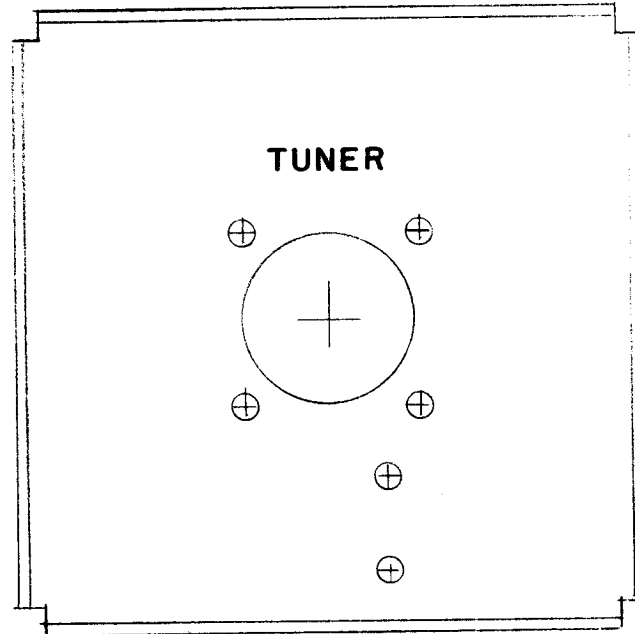
ISSUE	ITEM	CHANGED FROM	DATE	CH. NO.	DRAFTS	CHECKER	ENG. APP.	REQ.	ITEM	PART NO.	DESCRIPTION	SYMBOL	
											THE TECHNICAL MATERIEL CORP. MAMARONECK, NEW YORK STAMPING, BFO XTAL BRACKET		
										STOCK SIZE			
										MATERIAL			
											16 1/10/58	ART	
											DRAWN	CHECKED	FINAL APPR VAL
											MECH. DES. APP.		LD-379

REQ. PER UNIT	USED ON		
	MODEL	ASS'Y. NO.	DATE
1 each	ATS-70CU		3/31/58
1 each	ATS-50CU		3/31/58
1 each	ATS-50CU-2		4-23-59
1 each	ATS-70CU-2		

LD-389



LD-389-1
1 REQ



LD-389-2
1 REQ

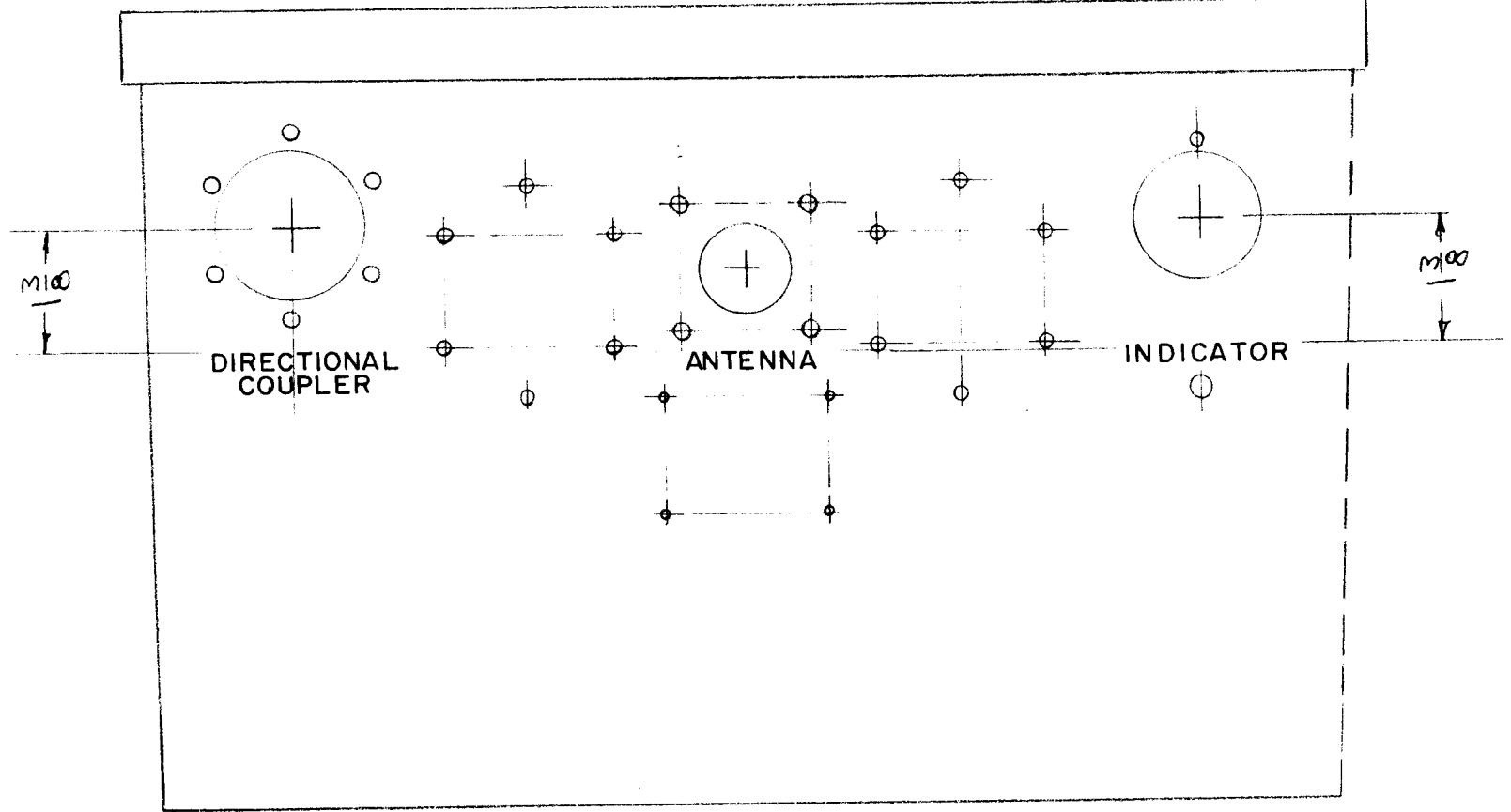
MARKING PROCESS: AS PER T M C SPECIFICATION S-727.

LETTERING: 1/8 HIGH WHITE, GOTHIC LOCATED AS SHOWN.

REF: MS-1174

								REQ.	ITEM	PART NO.	DESCRIPTION	SYMBOL					
										THE TECHNICAL MATERIEL CORP. MAMARONECK, NEW YORK							
										LETTERING, END BRACKET							
										MATERIAL							
ISSUE	ITEM	CHANGED FROM	DATE	CH. NO.	DRAFTS	CHECKER	ENG. APP.			TYPE & TEMPER	HEAT TREAT. SPEC.	DRAWN	CHECKED	FINAL APPROVAL			
TOLERANCES			SCALE:							file	16	file	file	file			
DEC. DIM. ±			MAXIMUM ALLOWABLE TOLERANCES HAVE BEEN DETERMINED AND ANY DEVIATIONS WILL BE CAUSE FOR REJECTION. REMOVE ALL BURRS AND SHARP EDGES														
FRAC. DIM. ±																	
ANGULAR DIM. ±												FINISH & SPEC. NO.		ELEC. DES. APP.	MESH. DES. APP.	LD-389	

REQ. PER UNIT	USED ON			LD-391
	MODEL	ASS'Y. NO.	DATE	
1	ATSC) TU		3/31/58	



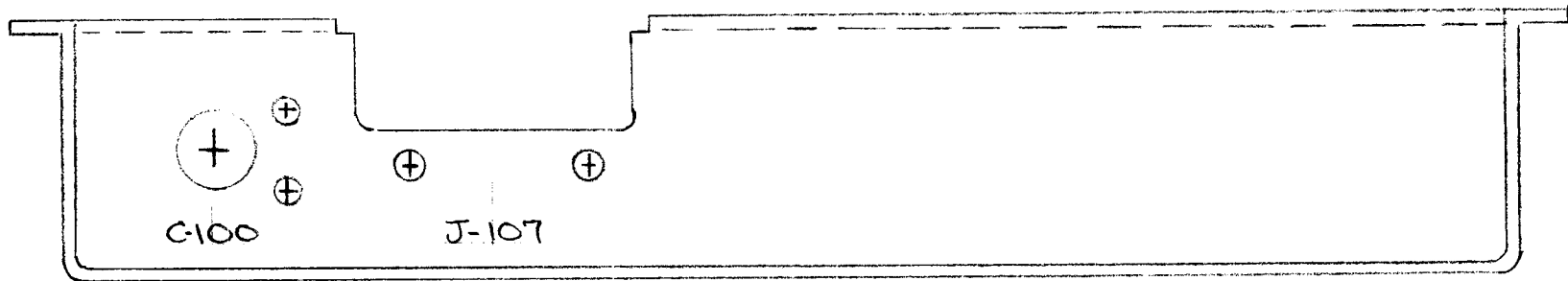
MARKING PROCESS: AS PER TMC SPECIFICATION S-727

LETTERING: 1/8 HIGH WHITE, GOTHIC
LOCATED AS SHOWN.

REF 8 PX-399 (CASE)

REQ. ITEM	PART NO.	DESCRIPTION	SYMBOL
		THE TECHNICAL MATERIEL CORP. MAMARONECK, NEW YORK	
		STOCK SIZE	
		LETTERING, CASE	
		MATERIAL	
ISSUE	ITEM	CHANGED FROM	DATE
TOLERANCES		SCALE:	
DEC. DIM. ±	MAXIMUM ALLOWABLE TOLERANCES HAVE BEEN DETERMINED AND ANY DEVIATIONS WILL BE CAUSE FOR REJECTION.		
FRAC. DIM. ±	REMOVE ALL BURRS AND SHARP EDGES		
ANGULAR DIM. ±	TYPE & TEMPER	HEAT TREAT. SPEC.	
	FINISH & SPEC. NO.	ELEC. DES. APP.	MECH. DES. APP.
		LD-391	

REQ. PER UNIT	USED ON			LD-399
	MODEL	ASS'Y. NO.	DATE	
1	FFR		5/21/58	



STAMP AS SHOWN 1/8 HIGH
 BLACK GOTHIC LETTERING
 MARKING PROCESS: AS PER TMC SPECIFICATION S-727.

REF: A-158

								REQ. ITEM	PART NO.	DESCRIPTION	SYMBOL	
										THE TECHNICAL MATERIEL CORP. MAMARONECK. NEW YORK		
										LETTERING, PAIN		
										MODEL FFR		
ISSUE	ITEM	CHANGED FROM	DATE	CH. NO.	DRAFTS	CHECKER	ENG. APP.	MATERIAL		DRAWN		
TOLERANCES			SCALE:					TYPE & TEMPER		HEAT TREAT. SPEC.	CHECKED	FINAL APPROVAL
DEC. DIM. ±			MAXIMUM ALLOWABLE TOLERANCES HAVE BEEN DETERMINED AND ANY DEVIATIONS WILL BE CAUSE FOR REJECTION.									LD-399
FRAC. DIM. ±			REMOVE ALL BURRS AND SHARP EDGES					FINISH & SPEC. NO.		ELEC. DES. APP.	MECH. DES. APP.	
ANGULAR DIM. ±												