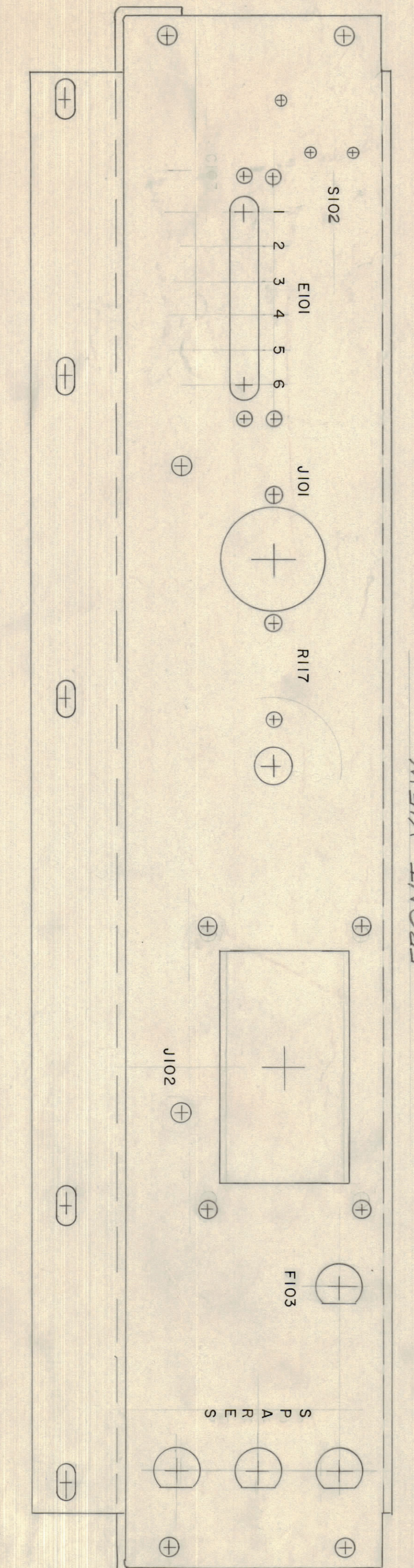
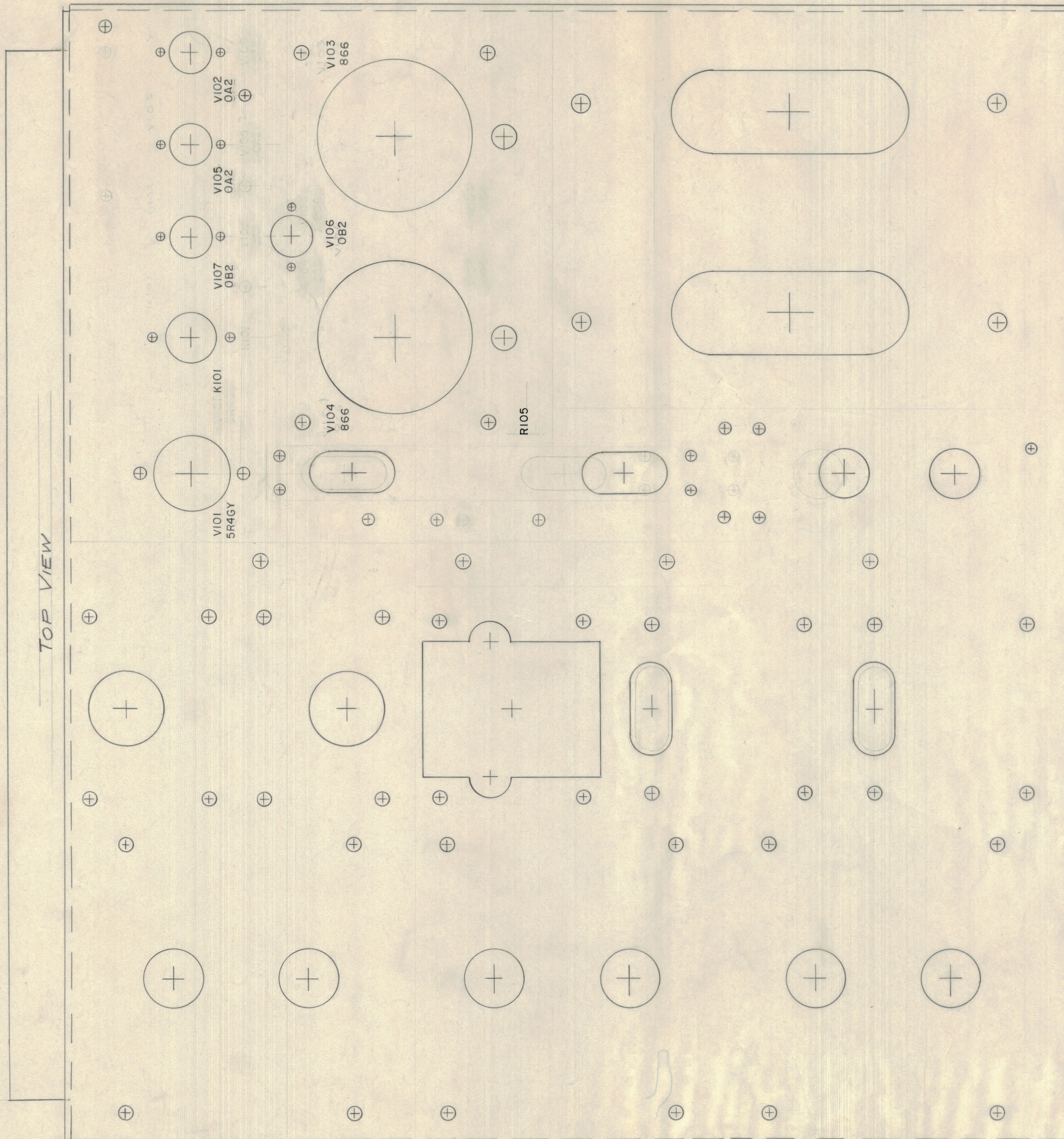


IF IT IS FOUND DESIRABLE TO CHANGE ANY TOLERANCE OR OTHER DETAIL SPECIFIED ON THIS DRAWING NOTIFY THE PURCHASER PROMPTLY.
 MAXIMUM ALLOWABLE TOLERANCES HAVE BEEN DETERMINED AND DEVIATIONS WILL BE CAUSE FOR REJECTION. REMOVE ALL BURRS AND SHARP EDGES

NOTICE TO PERSONS RECEIVING THIS DRAWING

THE TECHNICAL MATERIEL CORPORATION claims proprietary right in the material disclosed hereon. This drawing is issued in confidence for engineering information only and may not be reproduced or used to manufacture anything shown hereon without permission from THE TECHNICAL MATERIEL CORPORATION to the user. This drawing is loaned for mutual assistance and is subject to recall at any time.

Property of:
 THE TECHNICAL MATERIEL CORPORATION
 MAMARONECK, NEW YORK



All lettering to be 1/8 high black Gothic.

ISSUE	ITEM	CHANGED FROM	DATE	CN. NO.	DRAFTS	CHECKER	ENG. APP.	SHEET NO.
B	3	R108 Del'd, R105 was R106, R107 moved, V105 E102 moved	5/12/58	2	16	AW	AS	3
		V107 Added - V106 moved (was C103)						1 & 2
	1	V107 was V102 (was R102)						2
A	3	C103 Added to Both Views	3/15/58	1	16	AW	AS	2
	2	R107 Del'd (was C103) (was R107)						2
	2	R101 CHG'd TO R107 (was R101)						2
	1	C103 Del'd From Front View						1

ISSUE	ITEM	REVISION	DATE	CN. NO.	DRAFTS	CHECKER	APP.
D	2	C104 Added, C107 Added, R117 Added	4/9/58	4	16	AW	AS
	1	R107 moved, R108 moved					
C	1	E101 CHG'd TO S102	5/14/58	3	16	AW	AS
		Front View Sh. 1 / Rear View Sh. 2					

REQ. PER UNIT	MODEL	PROJECT NO.	ASSY. NO.	DATE
1	PSP-350	PAL-350		4-29-58

REF-8MS-1223 (CHASSIS) Sheets 1 & 2

REQ. ITEM	PART NO.	DESCRIPTION	SYMBOL
THE TECHNICAL MATERIEL CORP. MAMARONECK, NEW YORK			
LETTERING, MAIN CHASSIS			
MATERIAL	WEIGHT PER PC.		
TYPE & TEMPER	164-29-58	AW	
HEAT TREAT. SPEC.			
FINISH & SPEC. NO.			

CHECKED: [Signature] FINAL APPROVAL: [Signature]

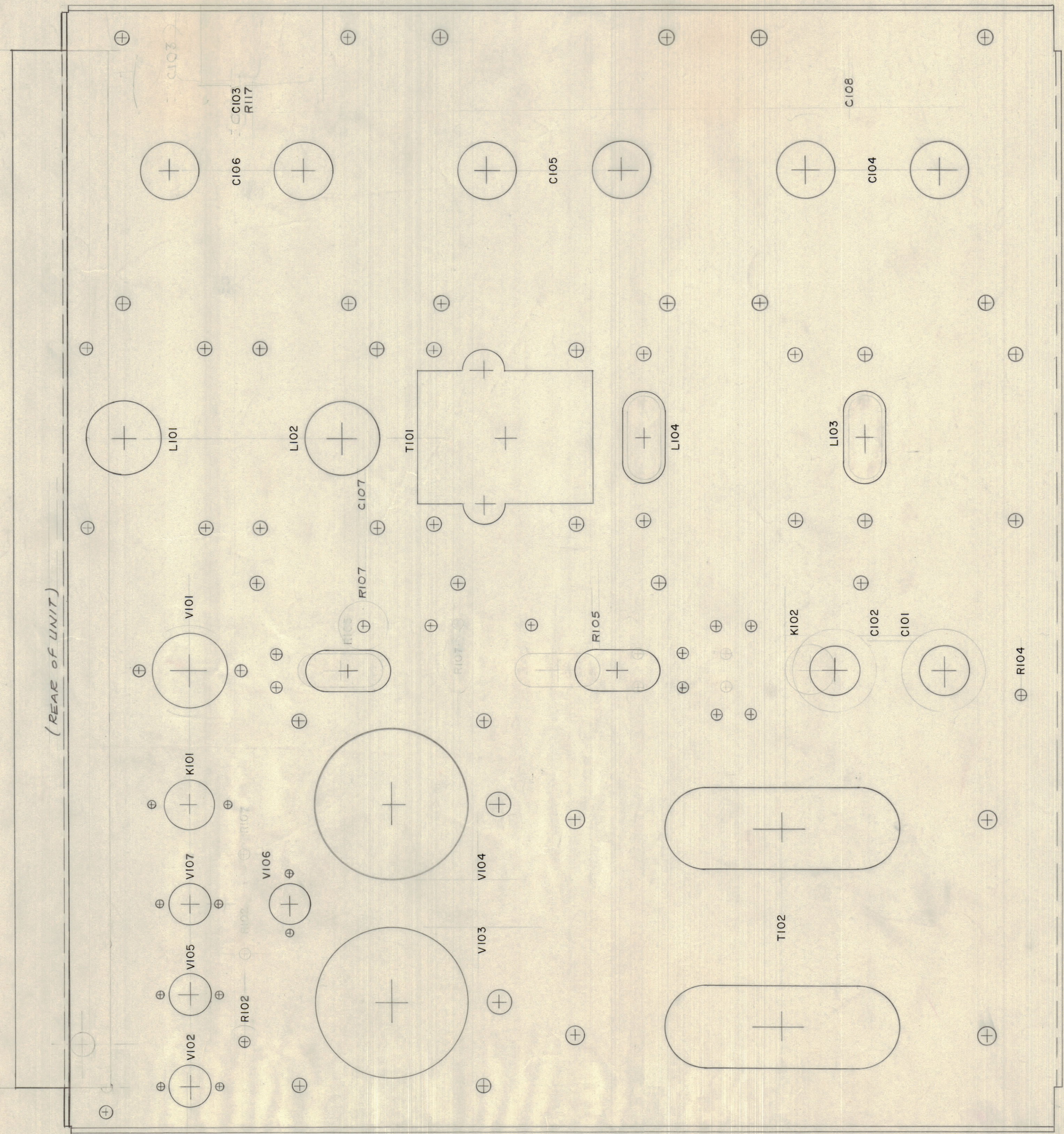
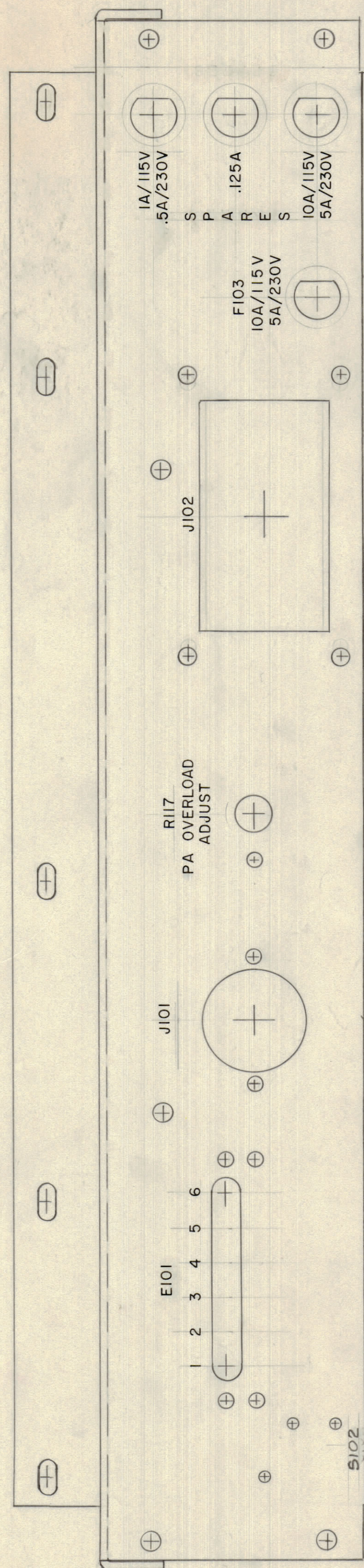
SHEET 1 LD-396 D

Sheet 1 of 2

LD-396 D

IF IT IS FOUND DESIRABLE TO CHANGE ANY TOLERANCE OR OTHER DETAIL SPECIFIED ON THIS DRAWING NOTIFY THE PURCHASER PROMPTLY.
 MAXIMUM ALLOWABLE TOLERANCES HAVE BEEN DETERMINED AND DEVIATIONS WILL BE CAUSE FOR REJECTION.
 REMOVE ALL BURRS AND SHARP EDGES

NOTICE TO PERSONS RECEIVING THIS DRAWING
 THE TECHNICAL MATERIEL CORPORATION claims proprietary right in the material disclosed hereon. This drawing is issued in confidence for engineering information only and may not be reproduced or used to manufacture anything shown hereon without permission from THE TECHNICAL MATERIEL CORPORATION to the user. This drawing is loaned for mutual assistance and is subject to recall at any time.
 Property of:
 THE TECHNICAL MATERIEL CORPORATION
 MAMARONECK, NEW YORK



All lettering to be 1/8 high black Gothic.

SEE SHEET 1 FOR REVISIONS

ISSUE	ITEM	CHANGED FROM	DATE	CN. NO.	DRAFTS	CHECKER	ENG. APP.
TOLERANCES							
ALL OTHERS				SCALE:			
DEC. DIM. ±				DRILL, PUNCH, COMMERCIAL STOCK			
FRAC. DIM. ±				SIZES AND MANUFACTURERS			
ANGULAR DIM. ±				TOLERANCES ARE NOT INCLUDED.			

Ref-8M5-1223 (CHASSIS) Sheets 1 & 2

REQ. ITEM	PART NO.	DESCRIPTION	SYMBOL
THE TECHNICAL MATERIEL CORP. MAMARONECK, NEW YORK			
LETTERING, MAIN CHASSIS			
STOCK SIZE			
MATERIAL		WEIGHT PER PC.	
TYPE & TEMPER		64-29-58	
HEAT TREAT. SPEC.		DRAWN [Signature] ELEC. DES. APP. [Signature] MECH. DES. APP. [Signature]	
FINISH & SPEC. NO.		CHECKED [Signature] FINAL APPROVAL [Signature]	

REQ PER UNIT	MODEL	PROJECT NO.	ASSY. NO.	DATE
1	PSP-350	PAL-350		4-29-58
USED ON				

LD-396 D