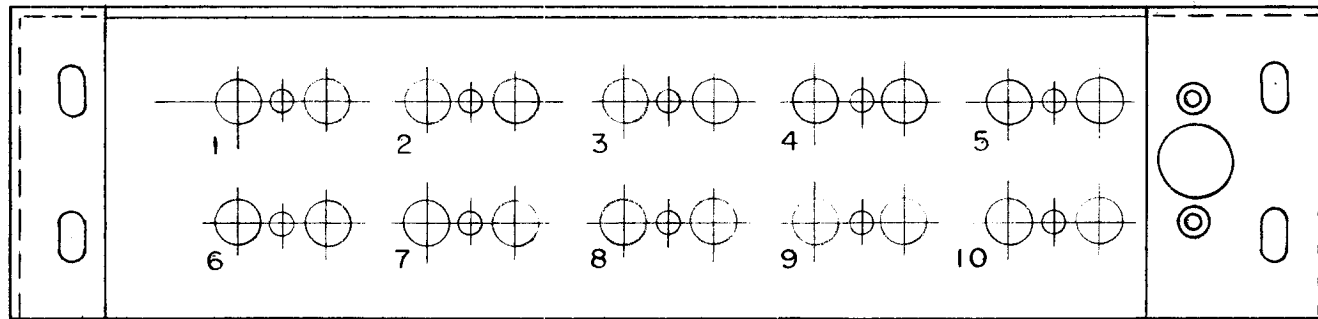


REQ. PER UNIT	USED ON			LD-368
	MODEL	ASS'Y. NO.	DATE	
1	GPR 90 RX		8-28-57	



MARKING PROCESS: AS PER TMC SPECIFICATION S-727.

NOTE: Lettering is to be  
 1/8" high Black Gothic.  
 Stamping to be done after  
 assembly of components.

REF: MS-1132 (2)

ISSUE	ITEM	CHANGED FROM	DATE	CH. NO.	DRAFTS	CHECKER	ENG. APP.	REQ. ITEM	PART NO.	DESCRIPTION	SYMBOL
								— H —		THE TECHNICAL MATERIEL CORP. MAMARONECK, NEW YORK	
								STOCK SIZE		XTAL CHASSIS, LETTERING	
								— H —		GPR 90 RX	
								MATERIAL			
								— H —	— H —	8.8-28-57	AJJ
								TOLERANCES	SCALE:	DRAWN	CHECKED
								DEC. DIM. ±	MAXIMUM ALLOWABLE TOLERANCES HAVE BEEN DETERMINED AND ANY DEVIATIONS WILL BE CAUSE FOR REJECTION.		
								FRAC. DIM. ±	REMOVE ALL BURRS AND SHARP EDGES		
								ANGULAR DIM. ±			
								TYPE & TEMPER	HEAT TREAT. SPEC.		
								— H —			
								FINISH & SPEC. NO.		ELEC. DES. APP.	MECH. DES. APP.
											LD-368