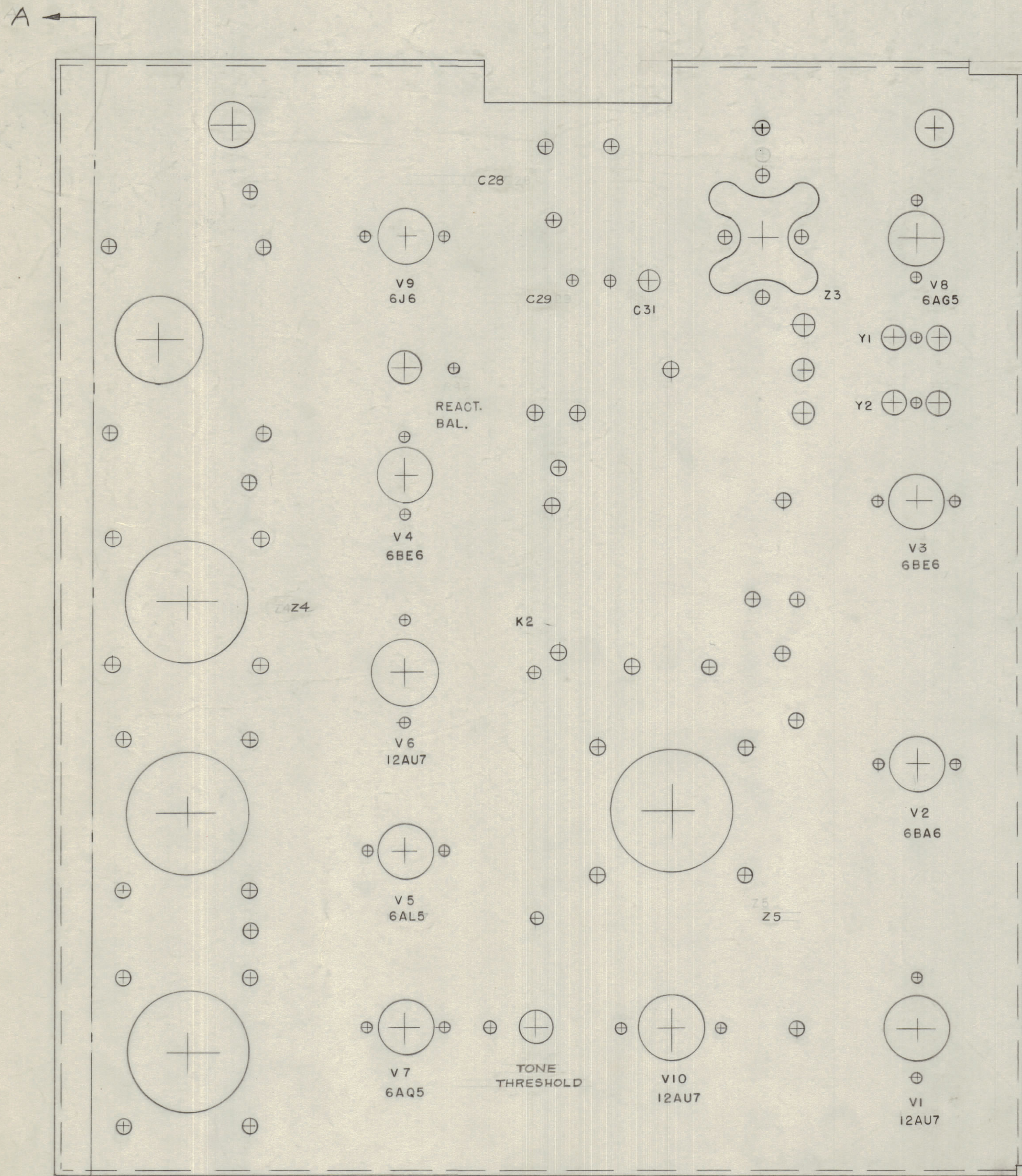
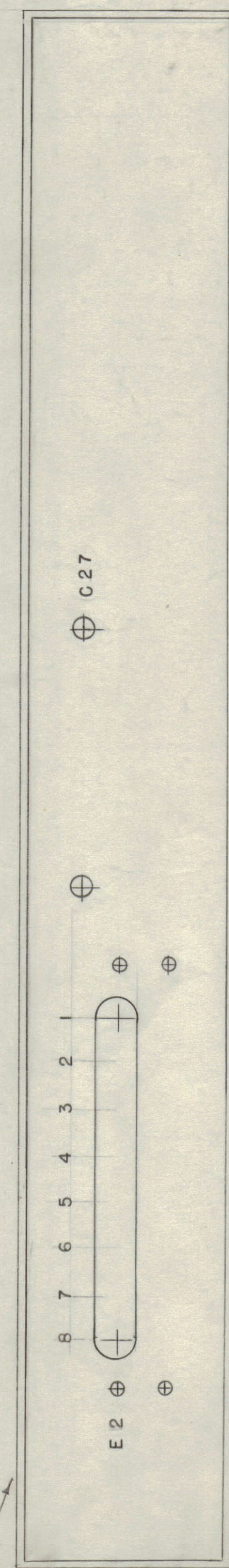


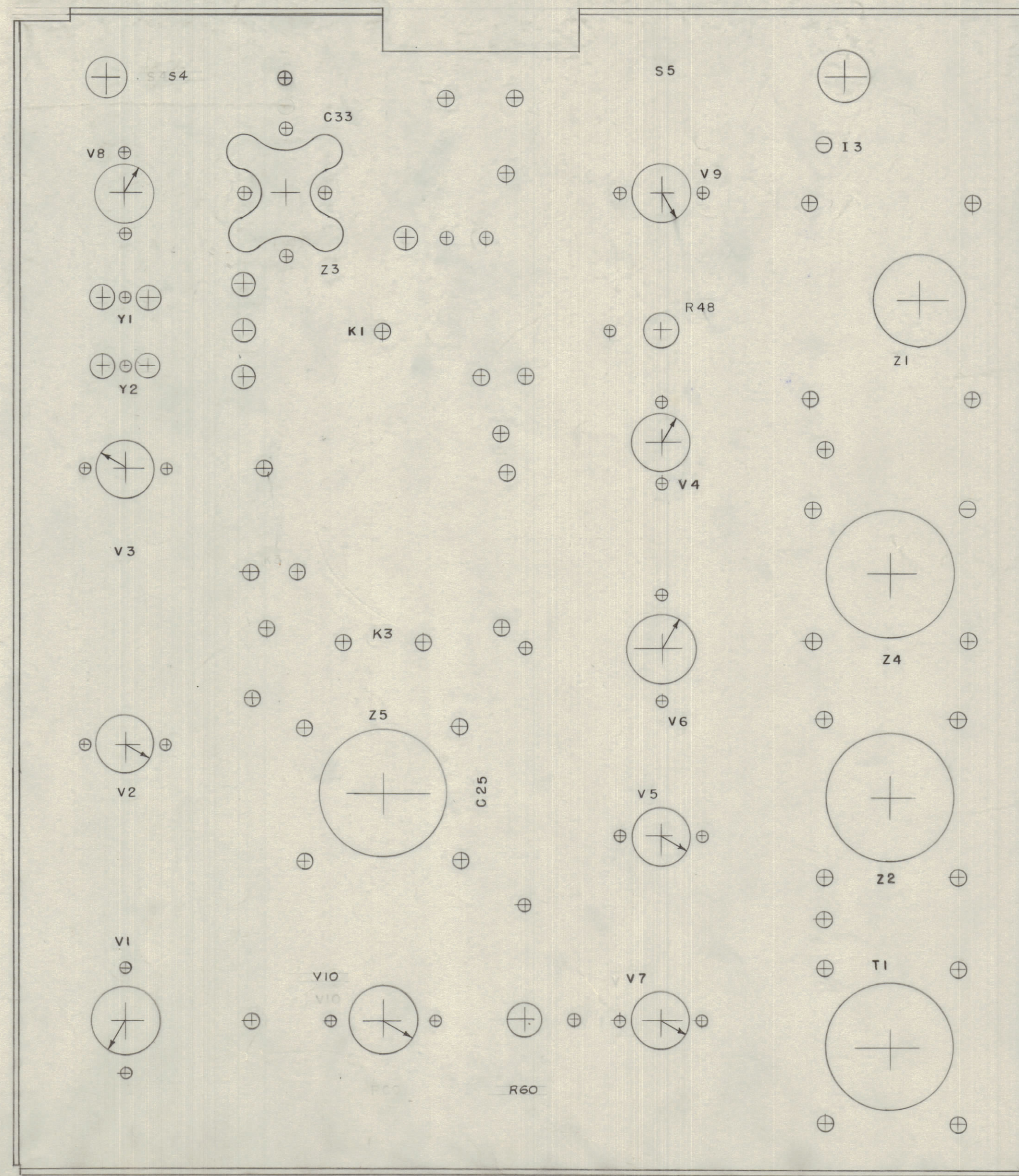
IF IT IS FOUND DESIRABLE TO CHANGE ANY TOLERANCE OR OTHER DETAIL SPECIFIED ON THIS DRAWING NOTIFY THE PURCHASER PROMPTLY.  
 MAXIMUM ALLOWABLE TOLERANCES HAVE BEEN DETERMINED AND DEVIATIONS WILL BE CAUSE FOR REJECTION. REMOVE ALL BURRS AND SHARP EDGES



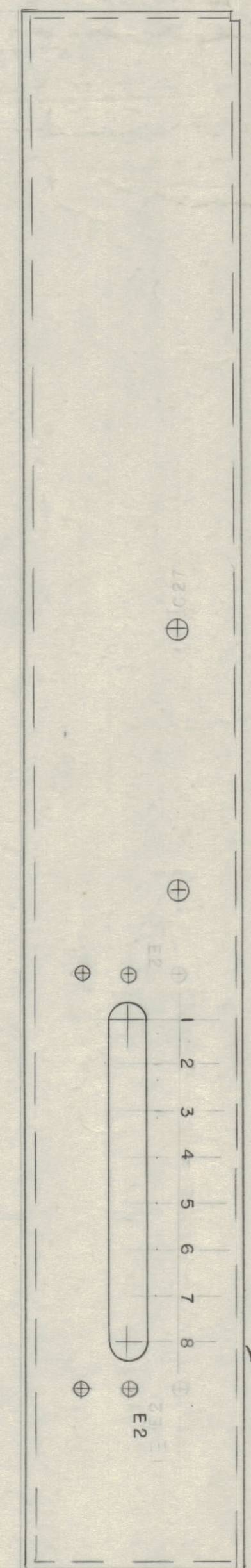
TOP VIEW (OUTSIDE)



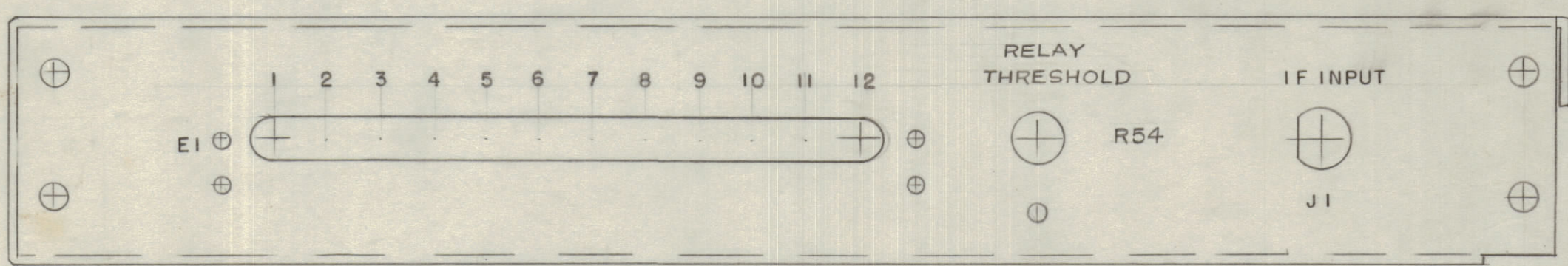
VIEW A-A, SIDE (INSIDE LIPS REMOVED)



BOTTOM VIEW (INSIDE) (LIPS REMOVED)



SIDE VIEW (OUTSIDE)



REAR VIEW (OUTSIDE)

NOTE: ARROW INDICATES POSITION OF TUBE SOCKET KEYWAY.

NOTE - ALL LETTERING 1/8" HIGH BLACK GOTHIC.

NOTICE TO PERSONS RECEIVING THIS DRAWING  
 THE TECHNICAL MATERIEL CORPORATION claims proprietary right in the material disclosed hereon. This drawing is issued in confidence for engineering information only and may not be reproduced or used to manufacture anything shown hereon without permission from THE TECHNICAL MATERIEL CORPORATION to the user. This drawing is loaned for mutual assistance and is subject to recall at any time.  
 Property of:  
 THE TECHNICAL MATERIEL CORPORATION  
 MAMARONECK, NEW YORK

ISSUE	ITEM	CHANGED FROM	DATE	CN. NO.	DRAFTS	CHECKER	ENG. APP.
A	1	Outside Side View Corrected	3/28/57	1	16	W.D.	[Signature]
TOLERANCES		SCALE:					
ALL OTHERS	DEC. DIM. ±	DRILL, PUNCH, COMMERCIAL STOCK					
	FRACTIONAL DIM. ±	SIZES AND MANUFACTURERS					
	ANGULAR DIM. ±	TOLERANCES ARE NOT INCLUDED.					

REQ. PER UNIT	MODEL	PROJECT NO.	ASSY. NO.	DATE
1	MSR-1			3-27-57
USED ON				

REQ. ITEM	PART NO.	DESCRIPTION	SYMBOL
4		THE TECHNICAL MATERIEL CORP. MAMARONECK, NEW YORK	
4		LETTERING, MAIN CHASSIS	
MATERIAL	WEIGHT PER PC.	MSR-1	
TYPE & TEMPER		GC. 3-27-57 P.L.K.	[Signature]
HEAT TREAT. SPEC.		16 3-27-57 A.J.J.	[Signature]
FINISH & SPEC. NO.			

LD-344 A