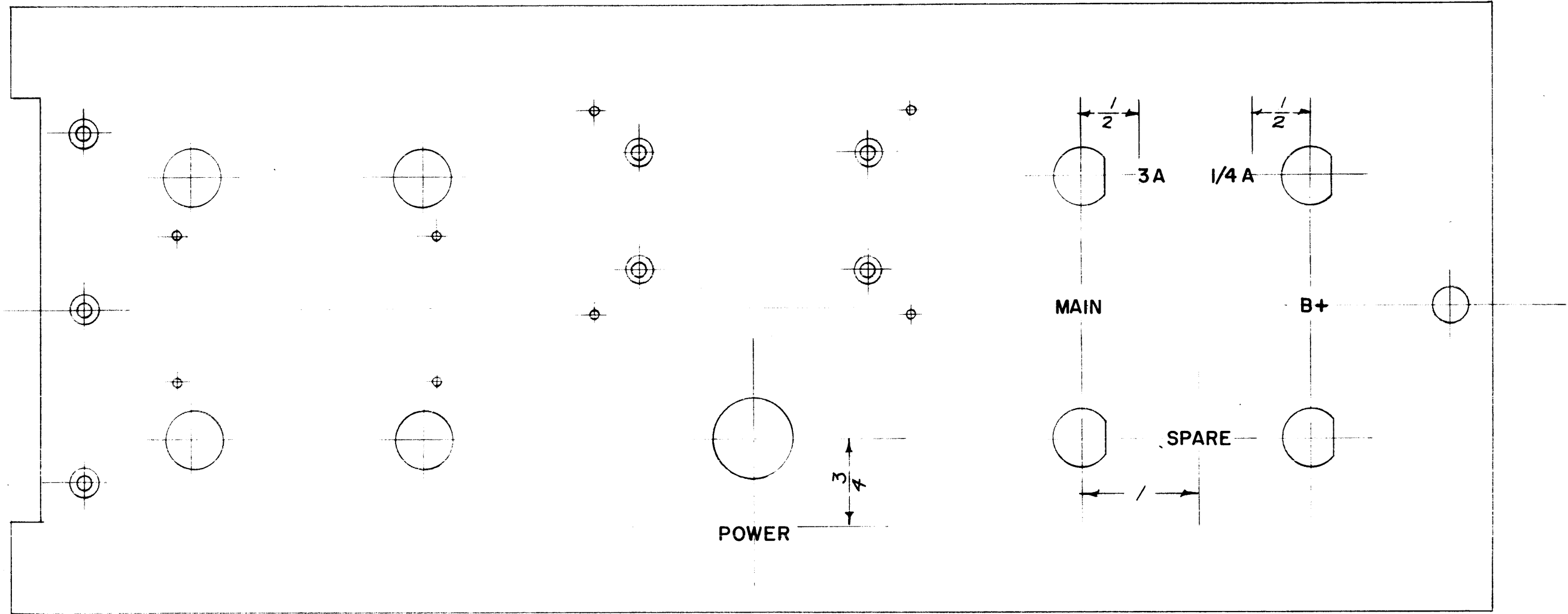


LD-319



NOTE:
ALL LETTERING TO BE WHITE FILLED
GOTHIC TYPE.

LETTER HEIGHT	DEPTH OF STROKE	WIDTH OF STROKE
1/8	.010	.020

REF: MS-1019

ISSUE	ITEM	CHANGED FROM	DATE	CH. NO.	DRAFTS	CHECKER	ENG. APP.

TOLERANCES	SCALE:
DEC. DIM. ±	MAXIMUM ALLOWABLE TOLERANCES HAVE BEEN DETERMINED AND ANY DEVIATIONS WILL BE CAUSE FOR REJECTION.
FRAC. DIM. ±	REMOVE ALL BURRS AND SHARP EDGES
ANGULAR DIM. ±	

1	TST	638		1-14-57
1	TSR	638		1-14-57
REQ. PER UNIT	MODEL	PROJECT NO.	ASS'Y. NO.	DATE
	USED ON			

REQ. ITEM	PART NO.	DESCRIPTION	SYMBOL
	//	THE TECHNICAL MATERIEL CORP. MAMARONECK, NEW YORK	
	STOCK SIZE	FRONT PANEL ENGRAVING	
	MATERIAL		
	//		
	//	6-1-14-57	A.J.J.
		DRAWN	CHECKED
			LD-319
		ELEC. DES. APP.	MECH. DES. APP.