

IF IT IS FOUND DESIRABLE TO CHANGE ANY TOLERANCE OR OTHER DETAIL SPECIFIED ON THIS DRAWING NOTIFY THE PURCHASER PROMPTLY.

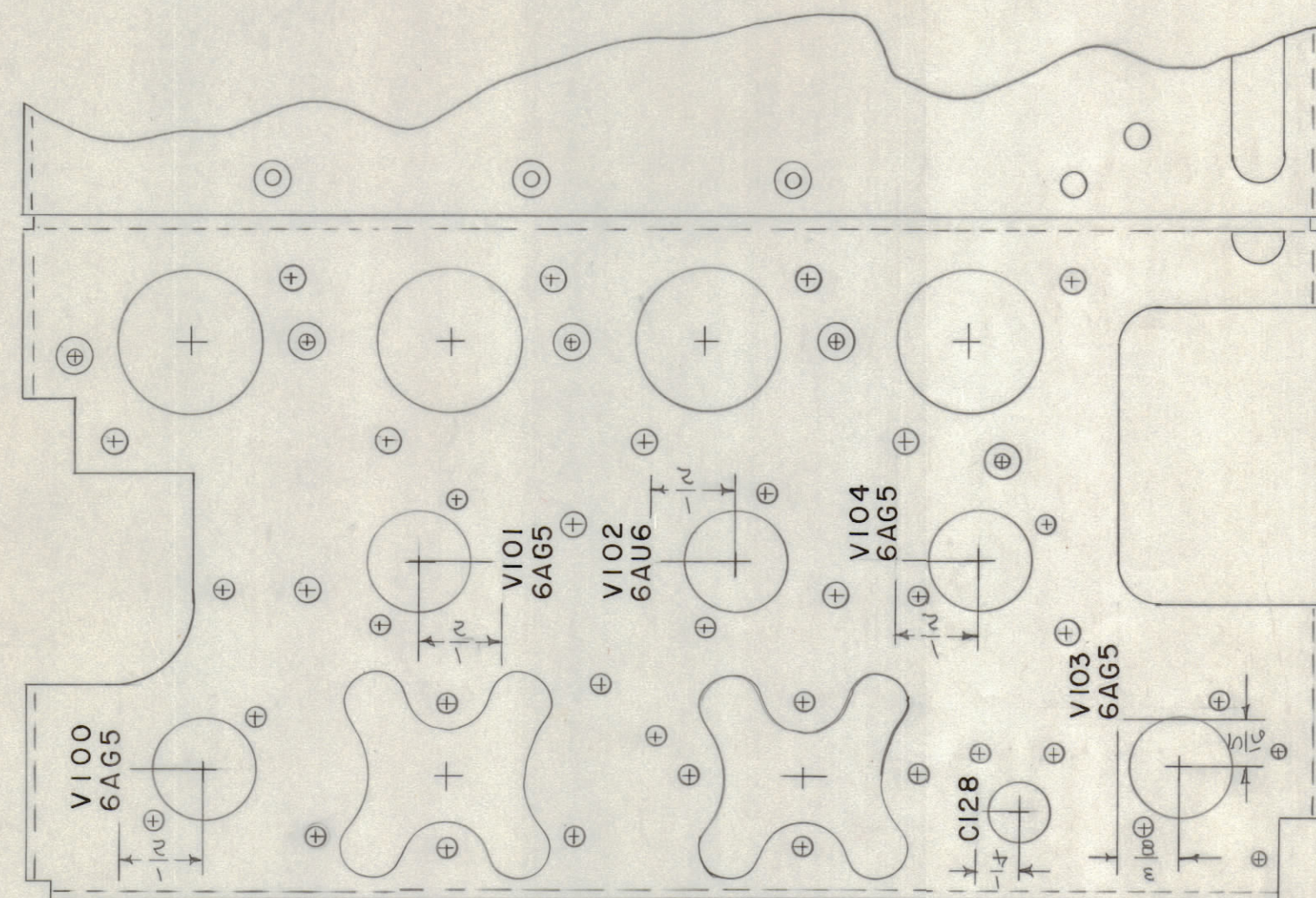
MAXIMUM ALLOWABLE TOLERANCES HAVE BEEN DETERMINED AND DEVIATIONS WILL BE CAUSE FOR REJECTION. REMOVE ALL BURRS AND SHARP EDGES

NOTICE TO PERSONS RECEIVING THIS DRAWING

THE TECHNICAL MATERIEL CORPORATION claims proprietary right in the material disclosed hereon. This drawing is issued in confidence for engineering information only and may not be reproduced or used to manufacture anything shown hereon without permission from THE TECHNICAL MATERIEL CORPORATION to the user. This drawing is loaned for mutual assistance and is subject to recall at any time.

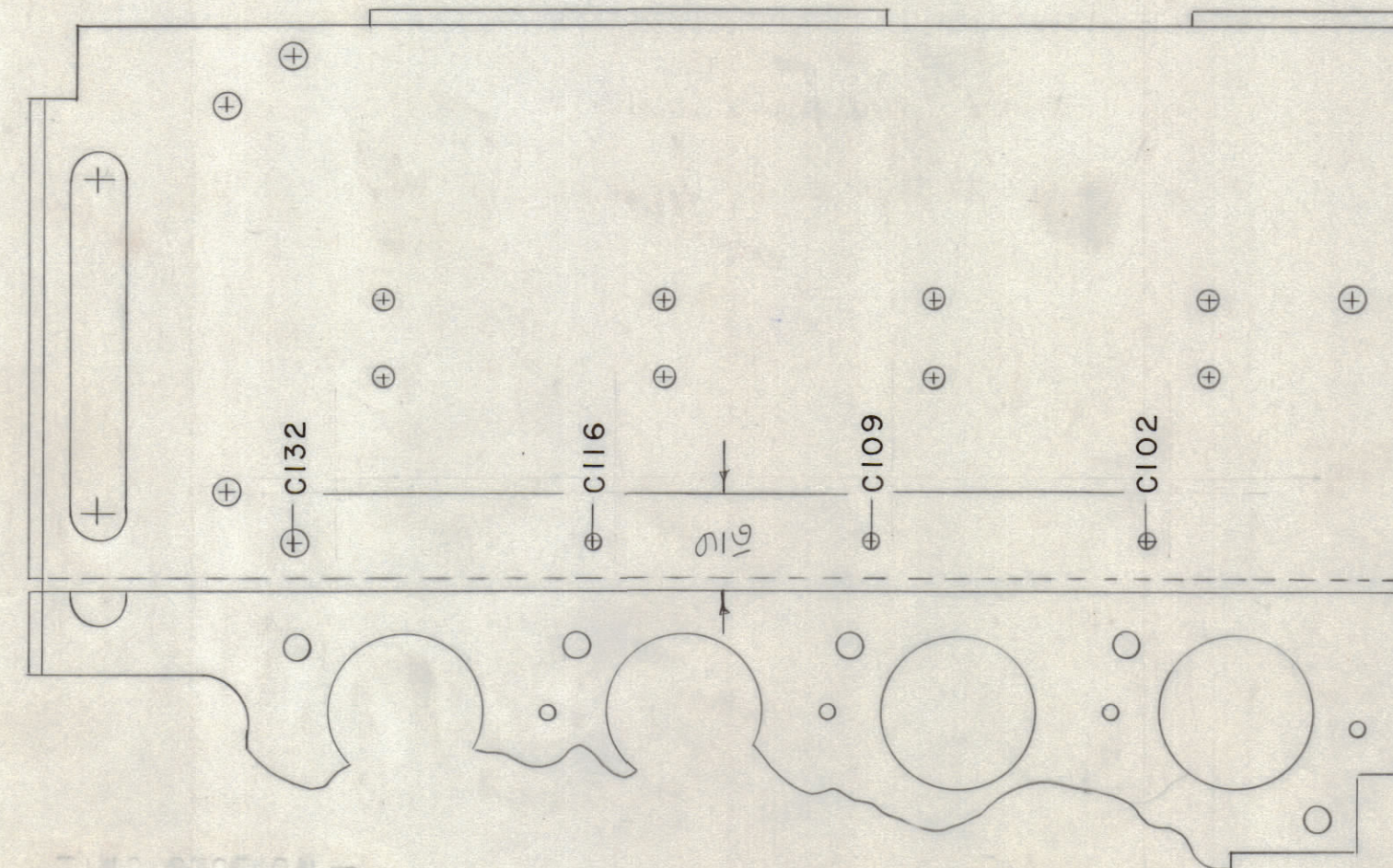
Property of:  
THE TECHNICAL MATERIEL CORPORATION  
MAMARONECK, NEW YORK

BAND	TOP OF CHASSIS LETTERING					
1	V100 6AG5	V101 6AG5	V102 6AUG	V103 6AG5	V104 6AG5	C128
2	V200 6AG5	V201 6AG5	V202 6AUG	V203 6AG5	V204 6AG5	C228
3	V300 6AG5	V301 6AG5	V302 6AUG	V303 6AG5	V304 6AG5	C328



TOP OF CHASSIS

BOTTOM OF CHASSIS



BAND	BOTTOM OF CHASSIS LETTERING			
1	C102	C109	C116	C132
2	C202	C209	C216	C232
3	C302	C309	C316	C332

LD-317

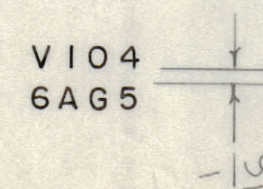
NOMENCLATURE TO BE AS FOLLOWS:

LD-317 - 1

TMC DWG. NO. BAND

THIS DRAWING IS KEYED TO BAND 1

LETTERING TO BE 1/8" HIGH GOTHIC.  
SPACING BETWEEN LINES TO BE AS BELOW.



REF. DWGS. MS-749 MS-936

ISSUE	ITEM	CHANGED FROM	DATE	CN. NO.	DRAFTS	CHECKER	ENG. APP.
TOLERANCES		SCALE:					
ALL OTHERS	DEC. DIM. ± FRAC. DIM. ± 1/32 ANGULAR DIM. ±	DRILL, PUNCH, COMMERCIAL STOCK SIZES AND MANUFACTURERS TOLERANCES ARE NOT INCLUDED.					

REQ PER UNIT	MODEL	PROJECT NO.	ASS'Y. NO.	DATE
	FFRD-1-2-3	458		11-21-56
	USED ON			

REQ. ITEM	PART NO.	DESCRIPTION	SYMBOL
THE TECHNICAL MATERIEL CORP. MAMARONECK, NEW YORK			
CHASSIS LETTERING			
FFRD-1-2-3			
STOCK SIZE		CDD	R.L.K.
MATERIAL		DRAWN	ELEC. DES. APP.
WEIGHT PER PC.		J.M.D.	MECH. DES. APP.
TYPE & TEMPER		CHECKED	FINAL APPROVAL
HEAT TREAT. SPEC.		USED ON LD-270	
FINISH & SPEC. NO.		LD-317	