

IF IT IS FOUND DESIRABLE TO CHANGE ANY TOLERANCE OR OTHER DETAIL SPECIFIED ON THIS DRAWING NOTIFY THE PURCHASER PROMPTLY.

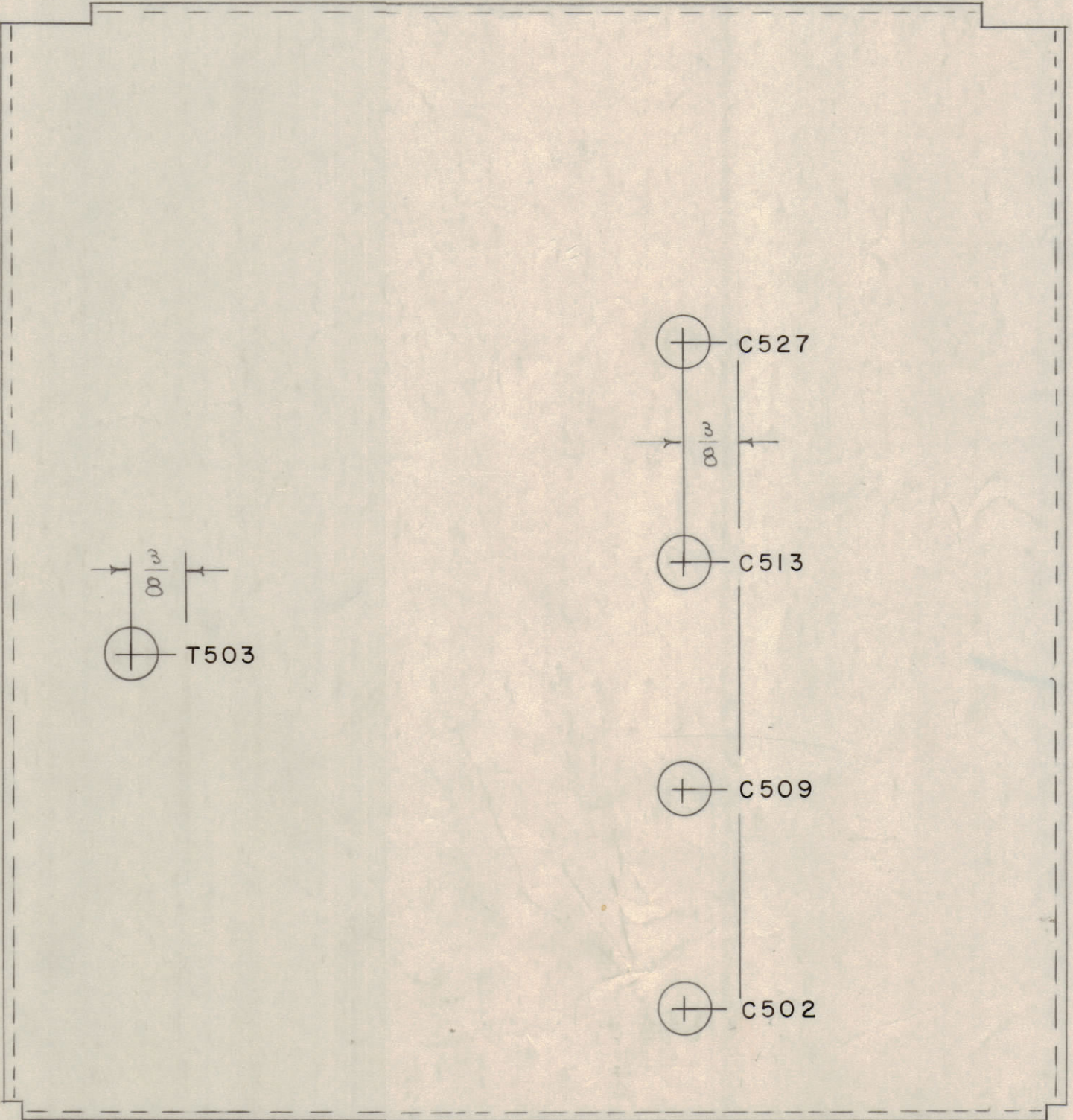
MAXIMUM ALLOWABLE TOLERANCES HAVE BEEN DETERMINED AND DEVIATIONS WILL BE CAUSE FOR REJECTION. REMOVE ALL BURRS AND SHARP EDGES

LETTERING TO BE 1/8 HIGH BLACK GOTHIC.

TOLERANCES TO BE DIFFERENTIAL UNLESS SPECIALLY MARKED.

LETTERING AS BELOW:

BAND	BOTTOM COVER LETTERING				
5	C527	C513	C509	C502	T503
6	C627	C613	C609	C602	T603
7	C727	C713	C709	C702	T703
8	C827	C813	C809	C802	T803
3M	C35	C17	C9	C2	T4



OUTSIDE OF COVER

NOMENCLATURE TO BE AS FOLLOWS:

LD-312 - 5
TMC DWG. NO. BAND

NOTE: THIS DRAWING IS KEYED TO BAND 5

MARKING PROCESS: AS PER TMC SPEC. S-727
LETTERING 1/8 HIGH BLACK GOTHIC.

LD-312 A

NOTICE TO PERSONS RECEIVING THIS DRAWING

THE TECHNICAL MATERIEL CORPORATION claims proprietary right in the material disclosed hereon. This drawing is issued in confidence for engineering information only and may not be reproduced or used to manufacture anything shown hereon without permission from THE TECHNICAL MATERIEL CORPORATION to the user. This drawing is loaned for mutual assistance and is subject to recall at any time.

Property of:
THE TECHNICAL MATERIEL CORPORATION
MAMARONECK, NEW YORK

REF. DWG. MS185

ISSUE	ITEM	CHANGED FROM	DATE	CN. NO.	DRAFTS	CHECKER	ENG. APP.
A	1	REF DWG WAS A319	2/17/53	13513	JF	JCB	JF

TOLERANCES

DEC. DIM.	FRAC. DIM.	ANGULAR DIM.
±	±	±

SCALE: DRILL, PUNCH, COMMERCIAL STOCK SIZES AND MANUFACTURERS TOLERANCES ARE NOT INCLUDED.

REQ PER UNIT	MODEL	PROJECT NO.	ASS'Y. NO.	DATE
	FFRD5-6-7-8-3M	104		11-19-56

USED ON

REQ.	ITEM	PART NO.	DESCRIPTION	SYMBOL
			THE TECHNICAL MATERIEL CORP. MAMARONECK, NEW YORK	
			STOCK SIZE	
			LETTERING, BOTTOM COVER	
			MATERIAL	
			WEIGHT PER PC.	
			FFRD 5-6-7-8-3M	
			TYPE & TEMPER	
			C.D.D	
			DRAWN	
			ELEC. DES. APP.	
			MECH. DES. APP.	
			HEAT TREAT. SPEC.	
			CHECKED	
			FINAL APPROVAL	
			USED FOR LD-124	
			LD-312	A