

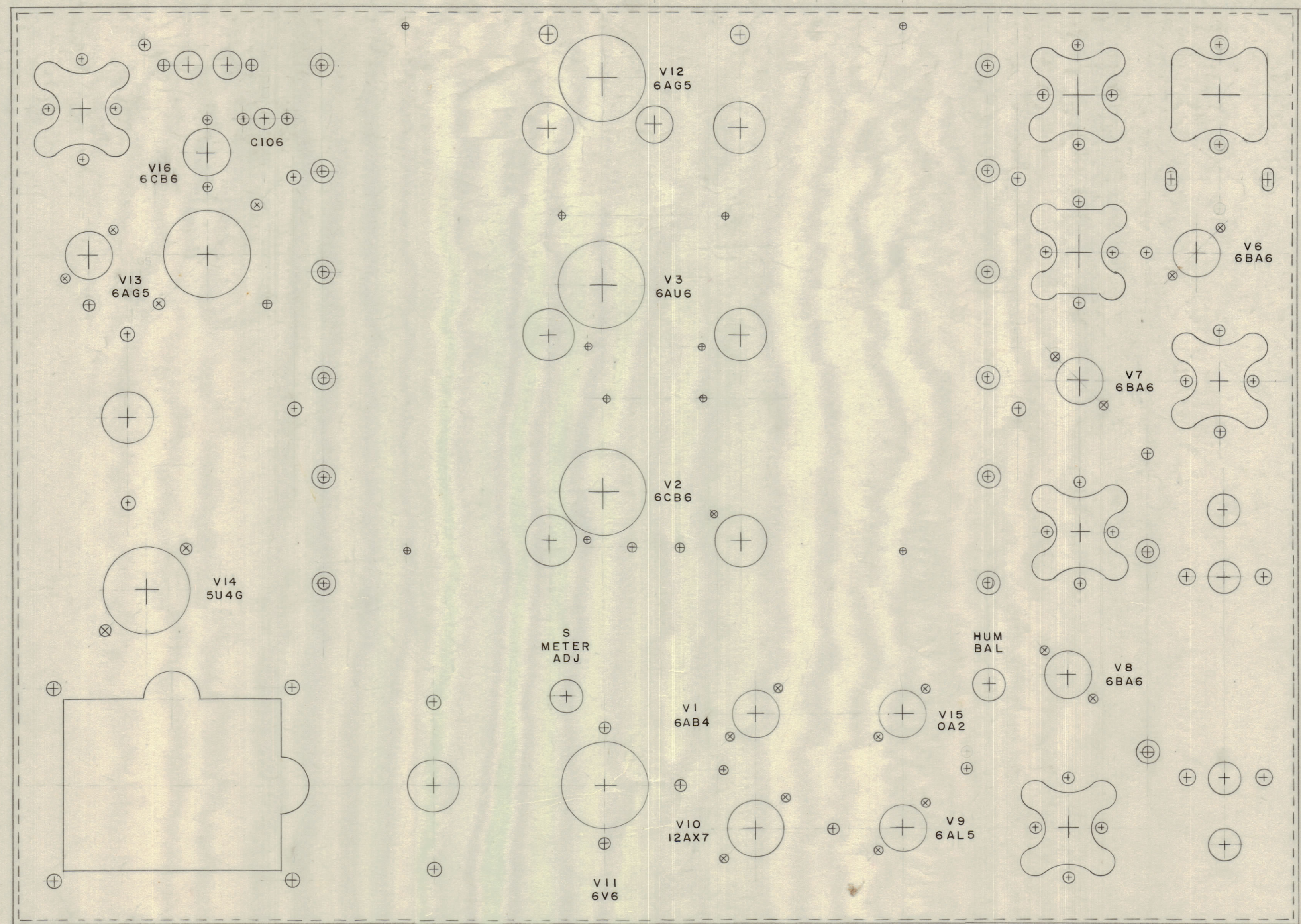
IF IT IS FOUND DESIRABLE TO CHANGE ANY TOLERANCE OR OTHER DETAIL SPECIFIED ON THIS DRAWING NOTIFY THE PURCHASER PROMPTLY.

MAXIMUM ALLOWABLE TOLERANCES HAVE BEEN DETERMINED AND DEVIATIONS WILL BE CAUSE FOR REJECTION. REMOVE ALL BURRS AND SHARP EDGES.

NOTICE TO PERSONS RECEIVING THIS DRAWING

THE TECHNICAL MATERIEL CORPORATION claims proprietary right in the material disclosed hereon. This drawing is issued in confidence for engineering information only and may not be reproduced or used to manufacture anything shown hereon without permission from THE TECHNICAL MATERIEL CORPORATION to the user. This drawing is loaned for mutual assistance and is subject to recall at any time.

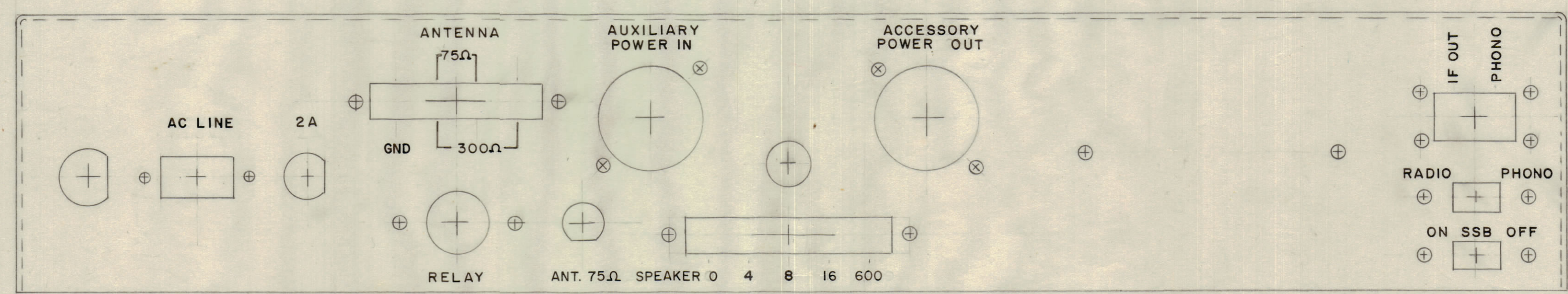
Property of:
THE TECHNICAL MATERIEL CORPORATION
MAMARONECK, NEW YORK



↑
FRONT
TOP OF CHASSIS
REAR
↓

LETTERING TO BE 1/8" HIGH GOTHIC

LD-308
5



↑
TOP
REAR OF CHASSIS
BOTTOM
↓

B	1	ANT. 75Ω Added	12/13/57	2	16	DLX/AS	HT
A	2	GND WAS G	3/15/57	1	16	DLX/AS	
A	1	AC LINE WAS 115V AC					
ISSUE	ITEM	CHANGED FROM	DATE	CN. NO.	DRAFTS	CHECKER	ENG. APP.
TOLERANCES		SCALE:					
ALL OTHERS	DEC. DIM. ±	DRILL, PUNCH, COMMERCIAL STOCK					
	FRAC. DIM. ±	SIZES AND MANUFACTURERS					
	ANGULAR DIM. ±	TOLERANCES ARE NOT INCLUDED.					

REF: MS-608

REQ. ITEM	PART NO.	DESCRIPTION	SYMBOL
THE TECHNICAL MATERIEL CORP. MAMARONECK, NEW YORK			
STOCK SIZE			
CHASSIS LETTERING MODEL GPR			
TOP AND REAR OUTSIDE			
MATERIAL	WEIGHT PER PC	CDD	DLX/AS
TYPE & TEMPER		DRAWN	ELEC. DES. APP. MECH. DES. APP.
HEAT TREAT. SPEC.		CHECKED	FINAL APPROVAL
GPR			LD-29-56
REQ. PER UNIT	MODEL	PROJECT NO.	DATE
		ASSY. NO.	
USED ON			
FINISH & SPEC. NO.			LD-308