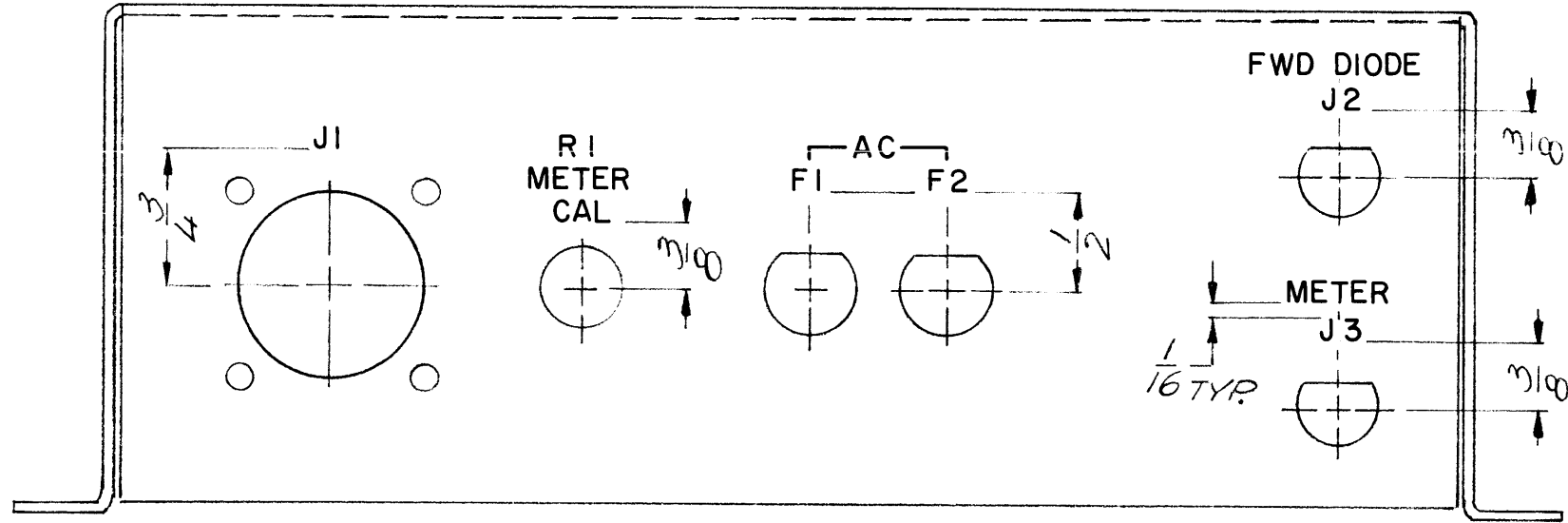
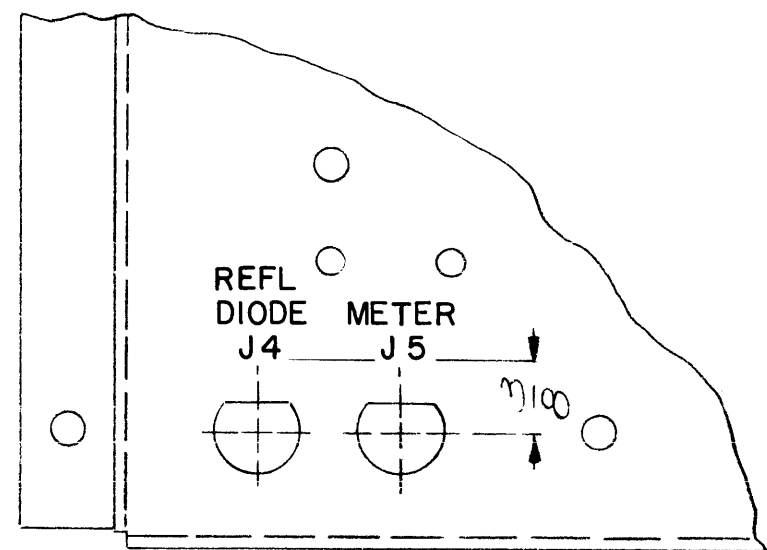


REVISIONS							
E.M.N. NO.	DRAFT	CHKD	ZONE	LTR	DESCRIPTION	DATE	APPROVED
	W.			Ø	ORIGINAL RELEASE FOR PRODUCTION	10/14/72	



MARKING PROCESS: AS PER TMC SPECIFICATION S727
 LETTERING: 1/8 HIGH BLACK GOTHIC, LOCATED AS SHOWN

KIT 345 & 346-1A		REF. MS 6414		REQ'D	ITEM	PART NUMBER	DESCRIPTION	SYM.	
APPLICATION		MATERIAL		FINAL APPROVAL		LIST OF MATERIAL			
QTY / UNIT	MODEL USED ON	ASS'Y NO.	UNLESS OTHERWISE SPECIFIED DIMENSIONS ARE IN INCHES AND INCLUDE CHEMICALLY APPLIED OR PLATED FINISHES	MECH. DES.		DATE	THE TECHNICAL MATERIEL CORP. MAMARONECK, NEW YORK		
CODE			DECIMALS .X ± .05 .XX ± .01 .XXX ± .005	FRACTIONS 1/64 ANGLES 0° .30'	ELECT. DES.	DATE	MARKING, CHASSIS		
NOTICE TO PERSONS RECEIVING THIS DRAWING THE TECHNICAL MATERIEL CORPORATION claims proprietary right in the material disclosed hereon. This drawing is issued in confidence for engineering information only and may not be reproduced or used to manufacture anything shown hereon without permission from THE TECHNICAL MATERIEL CORPORATION to the user. This drawing is loaned for mutual assistance and is subject to recall at any time.			FINISH	DRAWN	DATE	SIZE	CODE IDENT. NO.	DWG NO.	ISSUE
				GE	12/2/72	B	82679	LD 2531	Ø
						SCALE		SHEET	OF