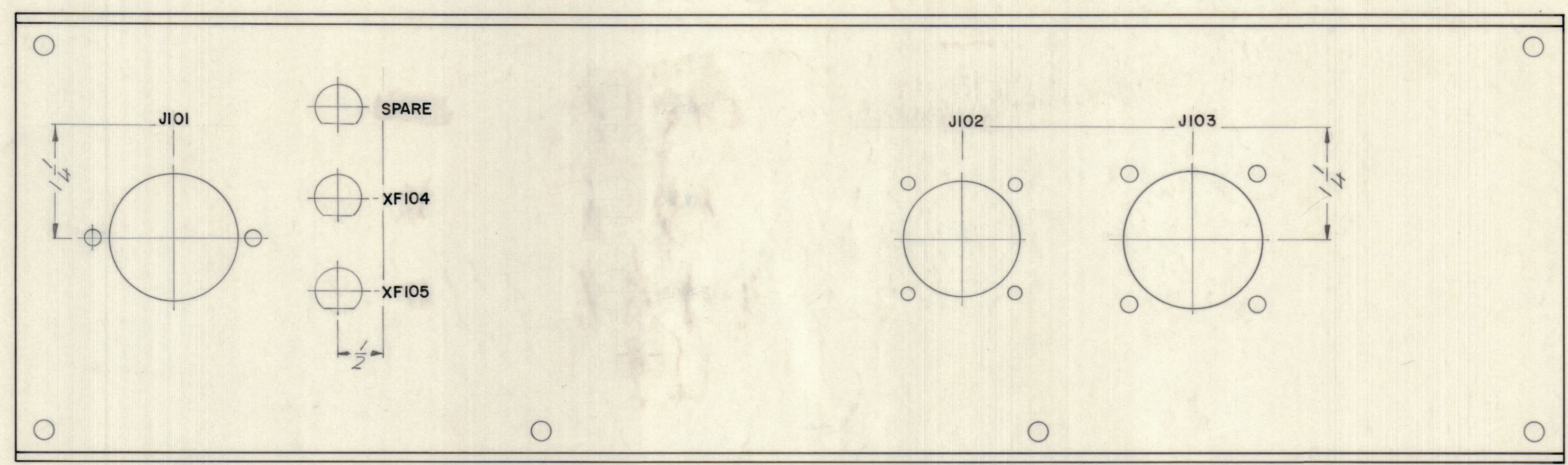


REVISIONS							
E.M.N.NO	DRAFT	CHKD	ZONE	LTR	DESCRIPTION	DATE	APPROVED
	(1)			B	ORIGINAL RELEASE FOR PRODUCTION	1/2/72	

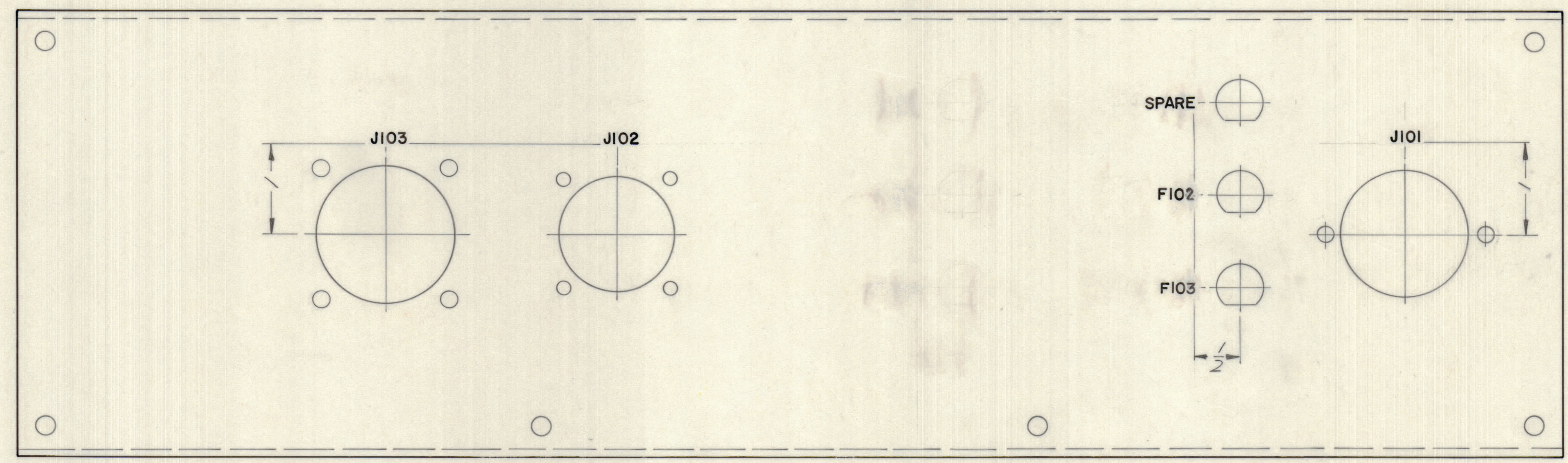
REAR



INTERIOR VIEW

MARKING PROCESS: AS PER TMC SPECIFICATION S727  
 LETTERING: 1/8 HIGH BLACK GOTHIC, LOCATED AS SHOWN

FRONT



EXTERIOR VIEW

REF. MS6323

QTY / UNIT	MODEL USED ON	ASS'Y NO.
	RTPR 1YA	AXS161
APPLICATION		
CODE		
<small>NOTICE TO PERSONS RECEIVING THIS DRAWING</small> <small>THE TECHNICAL MATERIEL CORPORATION claims proprietary right in the material disclosed herein. This drawing is issued in confidence for engineering information only and may not be reproduced or used to manufacture anything shown herein without permission from THE TECHNICAL MATERIEL CORPORATION to the user. This drawing is loaned for mutual assistance and is subject to recall at any time.</small>		

QTY. REQ.	ITEM	PART NO.	DESCRIPTION	SYMBOL
	S.D.		LIST OF MATERIAL	
	FINAL APPROVAL	DATE	<b>THE TECHNICAL MATERIEL CORP.</b> MAMARONECK, NEW YORK	
	Mech. DES.	DATE		
	ELECT. DES.	DATE		
	CHECKED	DATE	MARKING, REAR PLATE	
	DRAWN	DATE		
MATERIAL			SIZE	CODE IDENT NO. DWG NO.
FINISH			D	82679 LD2506
			SCALE 1:1	SHEET OF