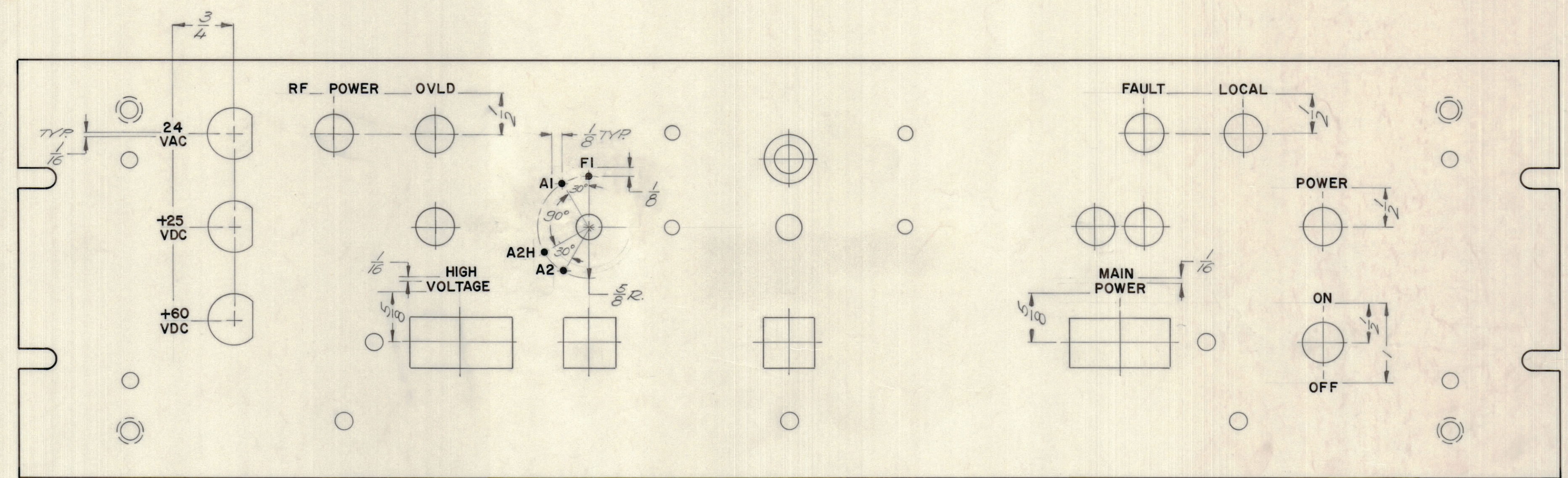


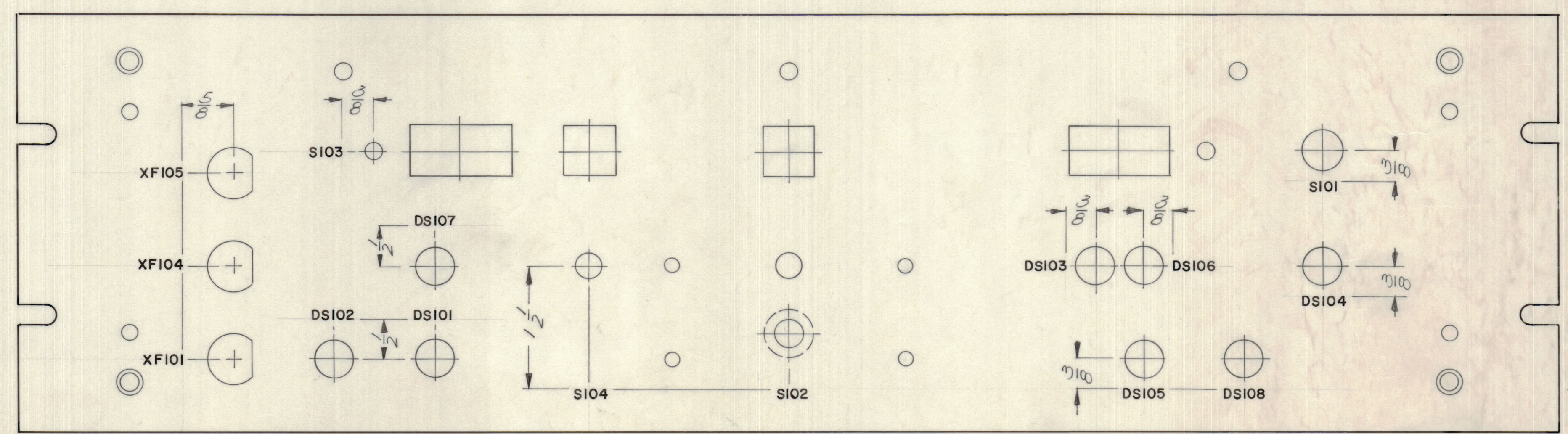
REVISIONS					
E.M.N.O	DRAFT	CHKD	ZONE	LTR	APPROVED
DESCRIPTION					DATE
ORIGINAL RELEASE FOR PRODUCTION					11/10/71



*FRONT*

ENGRAVING PROCESS: AS PER TMC SPECIFICATION S 566  
 LETTERING: 1/8 HIGH WHITE GOTHIC, LOCATED AS SHOWN

UNLESS OTHERWISE SPECIFIED:



*REAR*

MARKING PROCESS: AS PER TMC SPECIFICATION S727  
 LETTERING: 1/8 HIGH BLACK GOTHIC, LOCATED AS SHOWN

QTY. REQ.	ITEM	PART NO.	DESCRIPTION	SYMBOL	
	REF MS6322				
	S.D.				
	LIST OF MATERIAL				
	FINAL APPROVAL	DATE	THE TECHNICAL MATERIEL CORP.		
	<i>[Signature]</i>	1-6-72	MAMARONECK, NEW YORK		
	MECH. DES.	DATE	MARKING, FRONT PANEL		
	<i>[Signature]</i>	11-10-71			
	ELECT. DES.	DATE			
	CHECKED	DATE			
	<i>[Signature]</i>	11-10-71			
	DRAWN	DATE			
	<i>[Signature]</i>	10-28-71			
	MATERIAL			SIZE	CODE IDENT NO.
				D	82679
	FINISH				LD2505
				SCALE	1:1
				SHEET	OF

QTY / UNIT	MODEL USED ON	ASS'Y NO.
	RTPR-1YA	A4912
APPLICATION		
CODE		
NOTICE TO PERSONS RECEIVING THIS DRAWING		
THE TECHNICAL MATERIEL CORPORATION claims proprietary right in the material disclosed herein. This drawing is issued in confidence for engineering information only and may not be reproduced or used to manufacture anything shown hereon without permission from THE TECHNICAL MATERIEL CORPORATION to the user. This drawing is loaned for mutual assistance and is subject to recall at any time.		

D  
C  
B  
A

D  
C  
B  
A