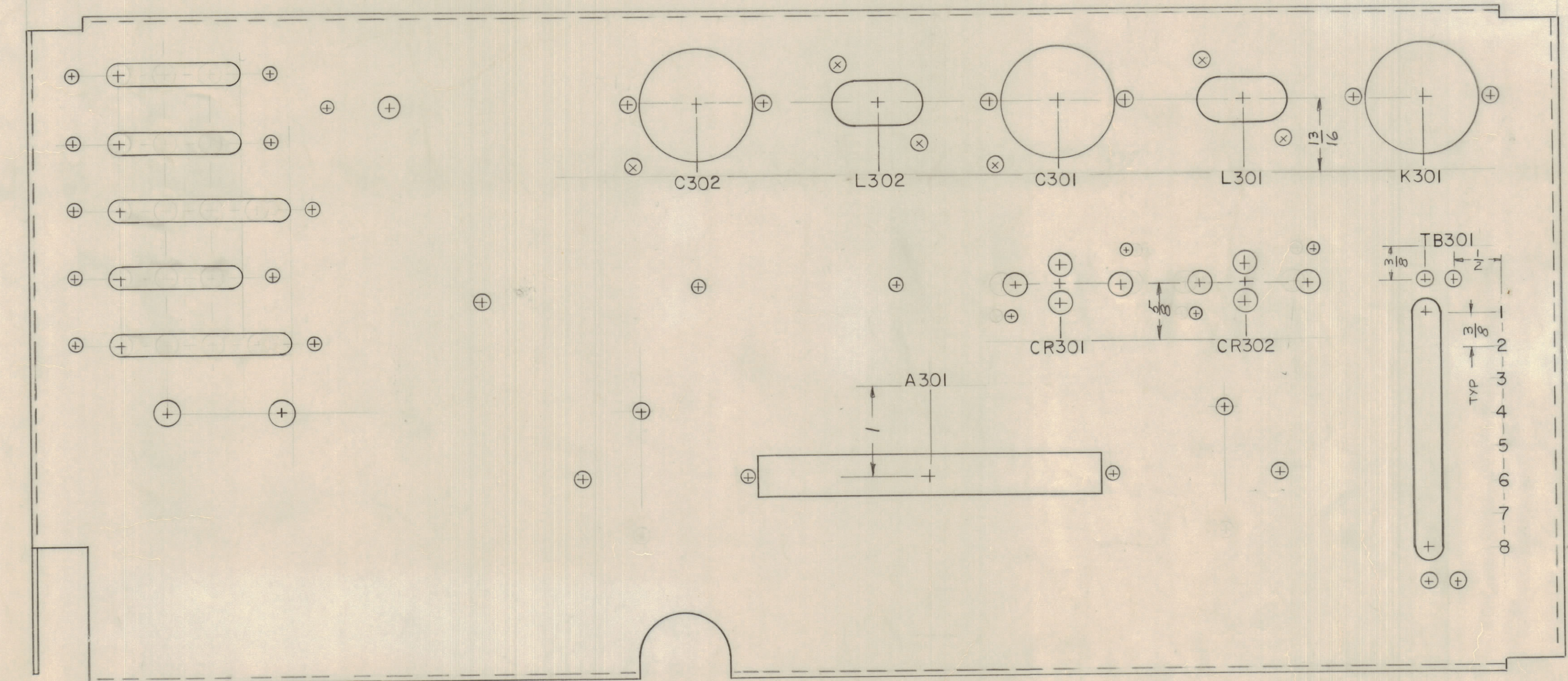
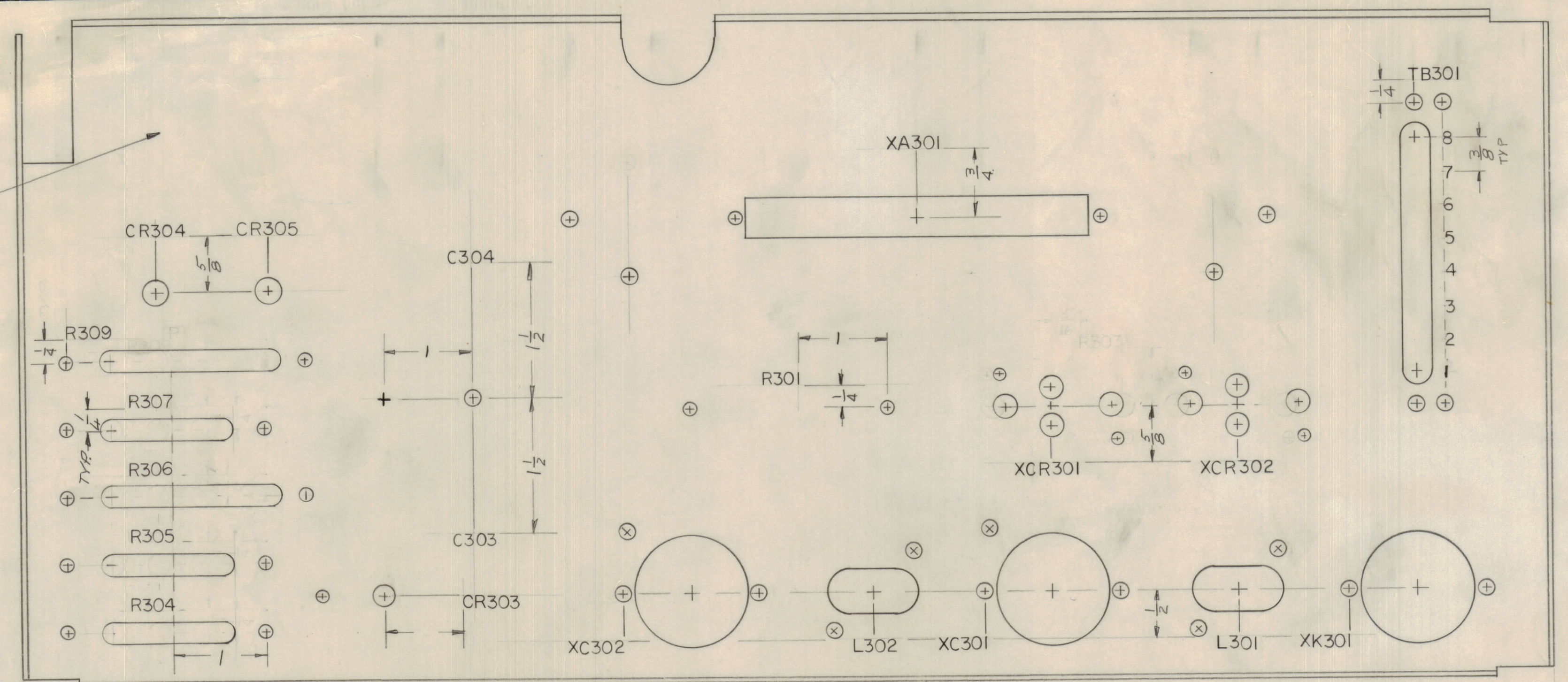


REVISIONS							
E.M.N.NO	DRAFT	CHKD	ZONE	LTR	DESCRIPTION	DATE	APPROVED
	CU				ORIGINAL RELEASE FOR PRODUCTION	5/15/71	P.E.S.
20539	GE		B-D	A	UPDATED TO REFLECT MAS CHG	2/17/72	Jm

MARK TMC PART NUMBER  
1/8 HIGH GOTHIC WITH LATEST  
REVISION LETTER



MARKING PROCESS: AS PER TMC SPECIFICATION S727  
LETTERING: 1/8 HIGH BLACK GOTHIC, LOCATED AS SHOWN

QTY / UNIT	HFLA-1K	API51
	MODEL USED ON	ASS'Y NO.
APPLICATION		
	CODE	
NOTICE TO PERSONS RECEIVING THIS DRAWING		
THE TECHNICAL MATERIEL CORPORATION claims proprietary right in the material disclosed hereon. This drawing is issued in confidence for engineering information only and may not be reproduced or used to manufacture anything shown hereon without permission from THE TECHNICAL MATERIEL CORPORATION to the user. This drawing is loaned for mutual assistance and is subject to recall at any time.		

UNLESS OTHERWISE SPECIFIED  
DIMENSIONS ARE IN INCHES  
AND INCLUDE CHEMICALLY APPLIED  
OR PLATED FINISHES

TOLERANCES ON  
DECIMALS      FRACTIONS  
.X ± .05      ± 1/64  
.XX ± .01      ANGLES  
.XXX ± .005      ± 0° -30'

QTY. REQ.	ITEM	PART NO.	DESCRIPTION	SYMBOL
BODET				
LIST OF MATERIAL				
THE TECHNICAL MATERIEL CORP. MAMARONECK, NEW YORK				
MARKING, FR. CHAS.				
MATERIAL		SIZE CODE IDENT NO. DWG NO.		ISSUE
FINISH		D 82679	LD2446	A
SCALE				SHEET OF

REF: M55952