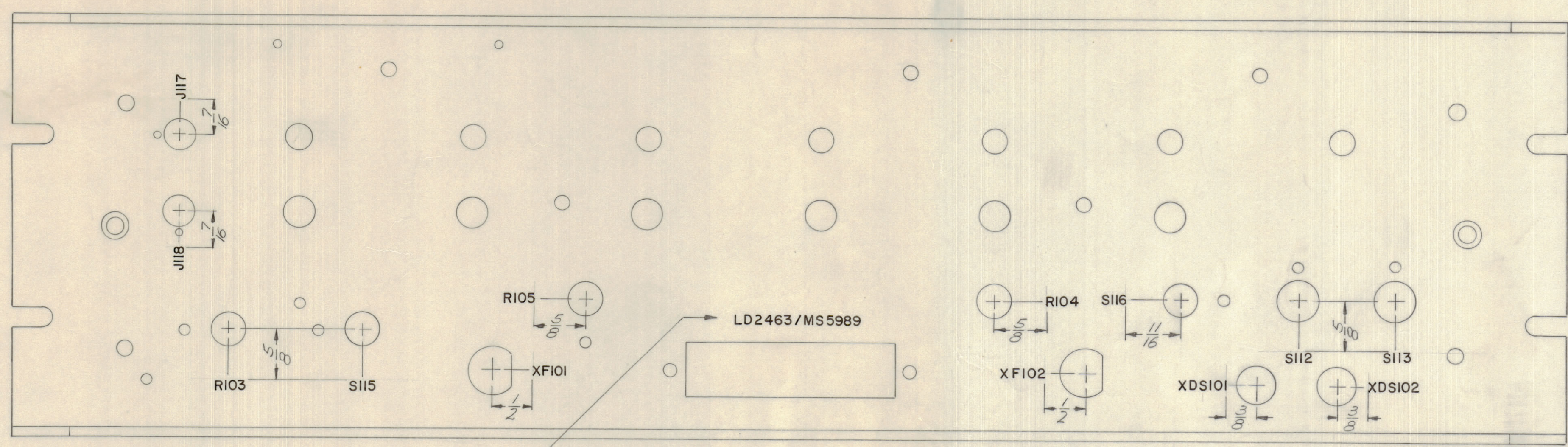
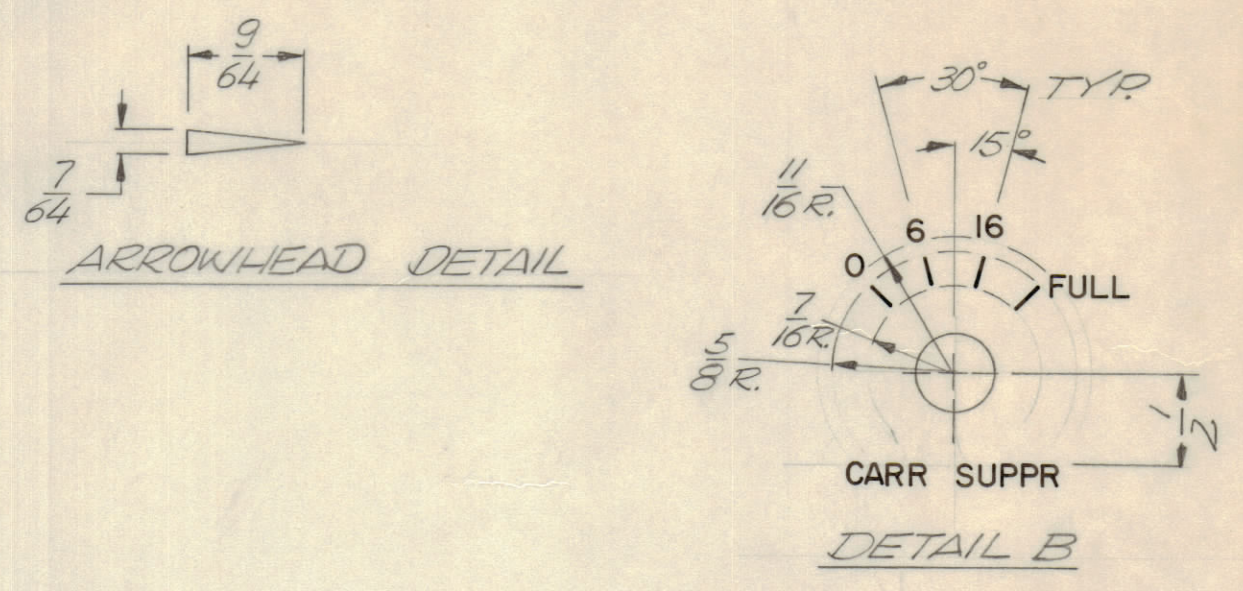
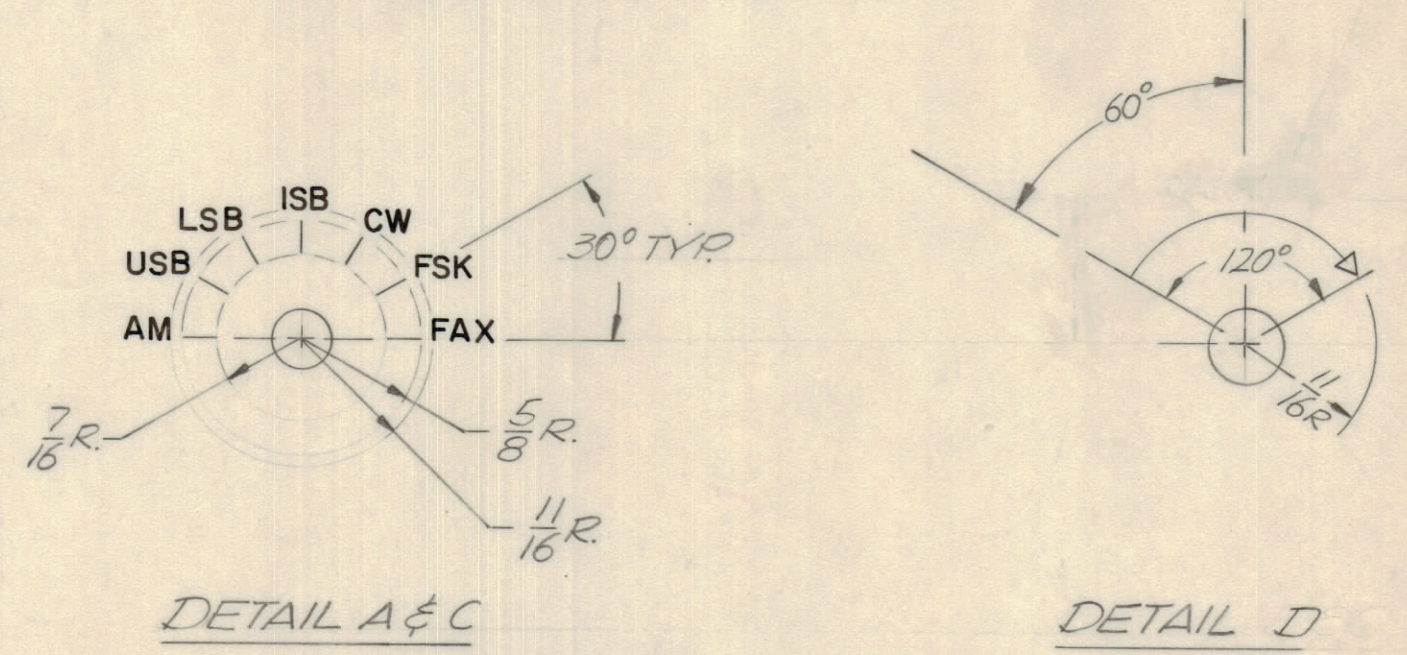
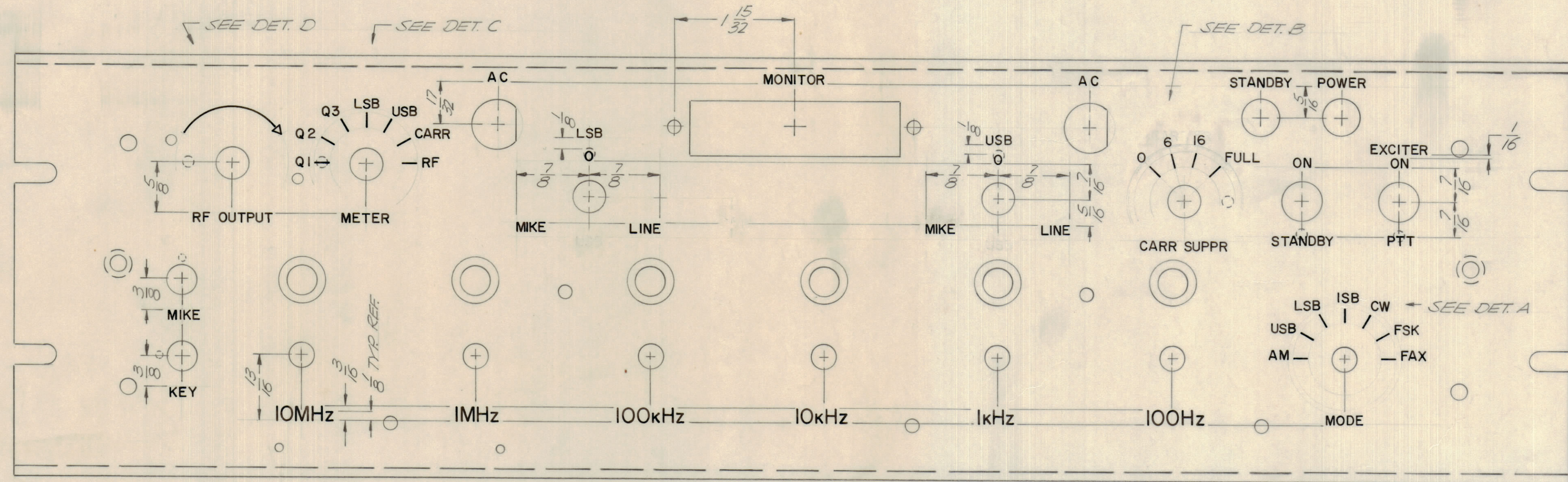


REVISIONS							
E.M.N.O.	DRAFT	CHKD	ZONE	LTR	DESCRIPTION	DATE	APPROVED
					ORIGINAL RELEASE FOR PRODUCTION	5/16/71	P.E.G.

ENGRAVING PROCESS: AS PER TMC SPEC. S566  
 LETTERING: 1/8 HIGH WHITE GOTHIC, LOCATED AS SHOWN UNLESS OTHERWISE SPECIFIED

HEIGHT OF LETTERS	DEPTH OF STROKE	WIDTH OF STROKE
1/8	.010	.020
3/16	.010	.025
LINES	.010	.015
ARROWHEADS	.010	SEE DETAIL

NOTE: THIS LAYOUT TYPICAL OF DETAILS A & C EXCEPT FOR LETTERING. USE LETTERING AS SHOWN ON FRONT PANEL VIEW FOR DETAIL C.



MARK TMC PART NUMBER  
 1/8 HIGH GOTHIC WITH LATEST  
 REVISION LETTER ON REAR OF PANEL

MARKING PROCESS: AS PER TMC SPECIFICATION S727  
 LETTERING: 1/8 HIGH BLACK GOTHIC, LOCATED AS SHOWN

REF. MS 5989

QTY. REQ.	ITEM	PART NO.	DESCRIPTION	SYMBOL
LIST OF MATERIAL				
UNLESS OTHERWISE SPECIFIED DIMENSIONS ARE IN INCHES AND INCLUDE CHEMICALLY APPLIED OR PLATED FINISHES			FINAL APPROVAL	DATE
TOLERANCES ON			MECH. DES.	DATE
DECIMALS			ELECT. DES.	DATE
FRACTIONS			CHECKED	DATE
ANGLES			DRAWN	DATE
± .05			GE	2/22/71
± .01			THE TECHNICAL MATERIEL CORP. MAMARONECK, NEW YORK	
± .005				
± 0° -30'			MARKING, FRONT PANEL	
MATERIAL		SIZE	CODE IDENT NO.	DWG NO.
FINISH		D	82679	LD2463
		SCALE 1:1	SHEET OF	

QTY / UNIT	MODEL USED ON	ASS'Y NO.
1	MMX A-2A	
APPLICATION		
CODE		
NOTICE TO PERSONS RECEIVING THIS DRAWING		
THE TECHNICAL MATERIEL CORPORATION claims proprietary right in the material disclosed hereon. This drawing is issued in confidence for engineering information only and may not be reproduced or used to manufacture anything shown hereon without permission from THE TECHNICAL MATERIEL CORPORATION to the user. This drawing is loaned for mutual assistance and is subject to recall at any time.		