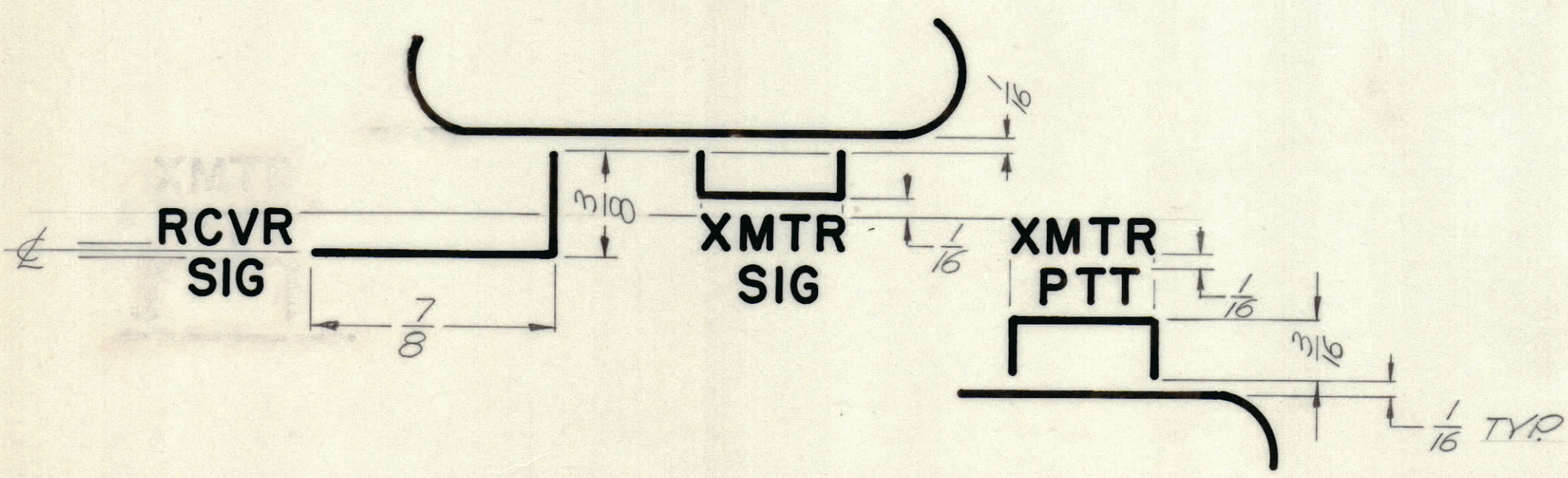
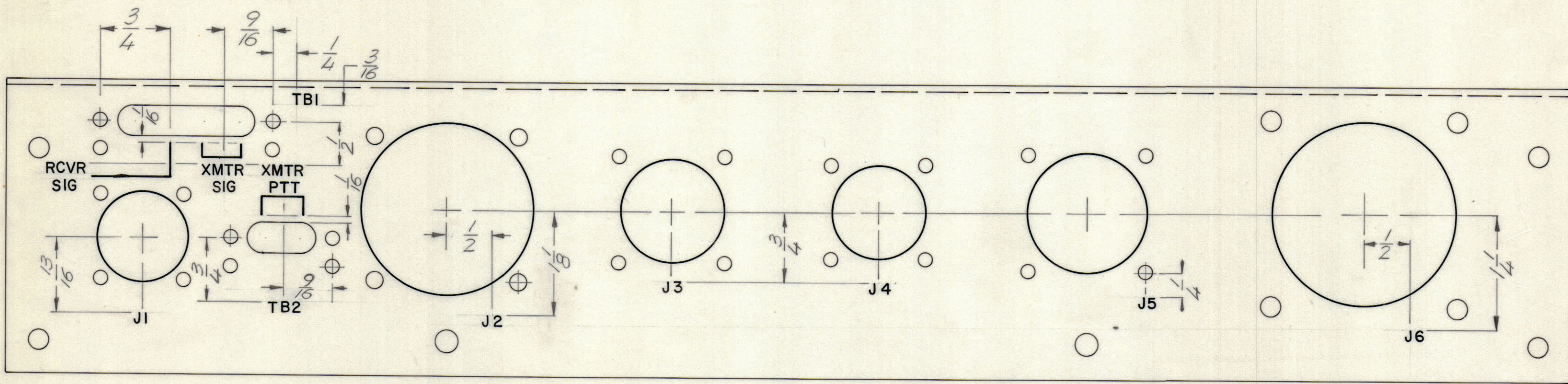


REVISIONS						DATE	APPROVED
E.M.N.NO	DRAFT	CHKD	ZONE	LTR	DESCRIPTION		
	①				ORIGINAL RELEASE FOR PRODUCTION	3/31/71	P.E.S.



MARKING PROCESS: AS PER TMC SPECIFICATION S727
 LETTERING: 1/8 HIGH BLACK GOTHIC, LOCATED AS SHOWN

REF. MS 5937
 UNLESS OTHERWISE SPECIFIED DIMENSIONS ARE IN INCHES AND INCLUDE CHEMICALLY APPLIED OR PLATED FINISHES
 TOLERANCES ON
 DECIMALS FRACTIONS
 .X ± .05 ± 1/64
 .XX ± .01 ANGLES
 .XXX ± .005 ± 0° -30'

AX 5128		
QTY / UNIT	MODEL USED ON	ASS'Y NO.
APPLICATION		
	CODE	

NOTICE TO PERSONS RECEIVING THIS DRAWING
 THE TECHNICAL MATERIEL CORPORATION claims proprietary right in the material disclosed hereon. This drawing is issued in confidence for engineering information only and may not be reproduced or used to manufacture anything shown hereon without permission from THE TECHNICAL MATERIEL CORPORATION to the user. This drawing is loaned for mutual assistance and is subject to recall at any time.

QTY. REQ.	ITEM	PART NO.	DESCRIPTION	SYMBOL
	S. DE MARCO		LIST OF MATERIAL	
	FINAL APPROVAL		DATE	THE TECHNICAL MATERIEL CORP. MAMARONECK, NEW YORK <i>MARKING REAR PANEL</i>
	MECH. DES.		DATE	
	ELECT. DES.		DATE	
	CHECKED		DATE	
	DRAWN		DATE	
MATERIAL			SIZE	CODE IDENT NO.
FINISH			C	82679
			DWG NO.	LD2441
			ISSUE	φ
SCALE			SHEET	OF

LD2441