

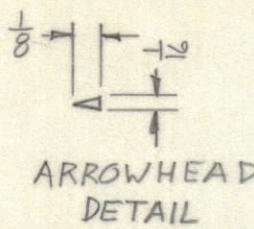
4

3

2

1

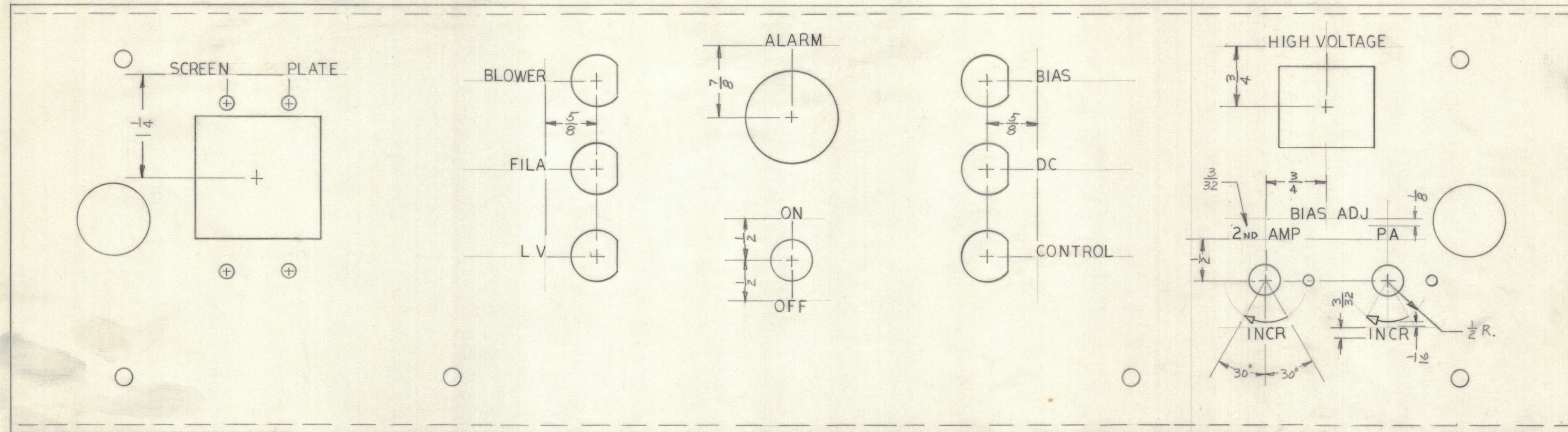
UNLESS OTHERWISE SPECIFIED:
 1. ALL LETTERS 1/8 HIGH, WHITE FILLED GOTHIC.
 2. ALL ARROWHEADS WHITE OUTLINE FILLED.



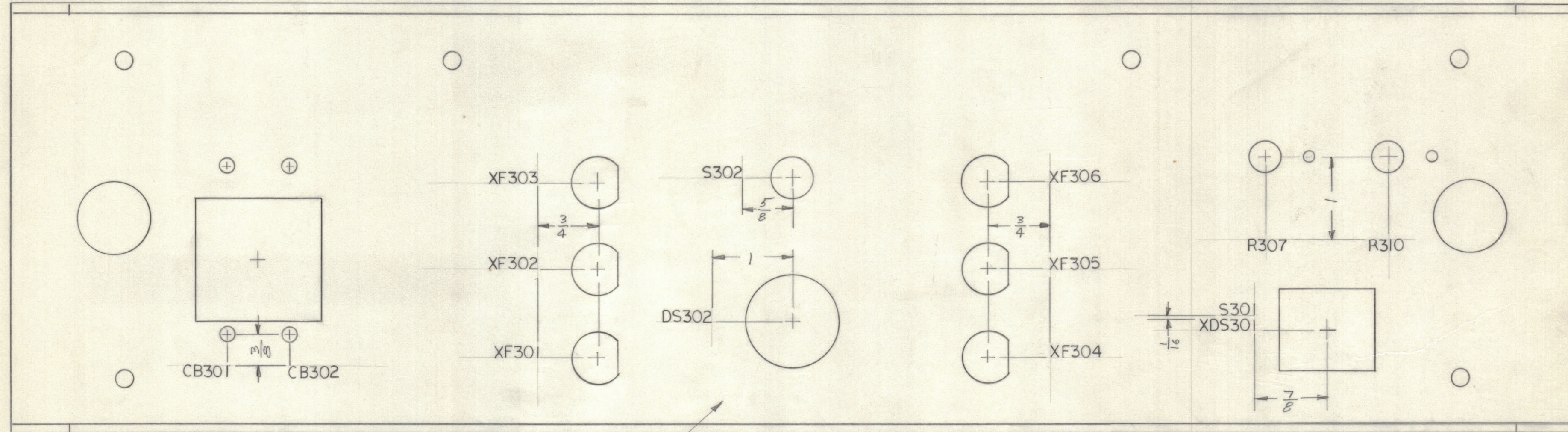
HEIGHT	DEPTH	WIDTH
3/32	.010	.015
1/8	.010	.020
ARROWHEAD LINES	.010	.015
		SEE DETAIL

REVISIONS					DATE	APPROVED
E.M.N.NO	DRAFT	CHKD	ZONE	LTR	DESCRIPTION	
	(1)			Ø	ORIGINAL RELEASE FOR PRODUCTION	9/1/70

ENGRAVING - FRONT VIEW



MARKING - REAR VIEW



MARKING PROCESS: AS PER TMC SPECIFICATION S727
 LETTERING: 1/8 HIGH BLACK GOTHIC, LOCATED AS SHOWN

MARK TMC PART NUMBER
 1/8 HIGH GOTHIC WITH LATEST
 REVISION LETTER ON REAR OF PANEL

REF: MS 56 54

QTY. REQ.	ITEM	PART NO.	DESCRIPTION	SYMBOL
BUDETTI LIST OF MATERIAL				
FINAL APPROVAL		DATE	THE TECHNICAL MATERIEL CORP. MAMARONECK, NEW YORK	
MECH. DES.		DATE	MARKING, PNL, FR	
ELECT. DES.		DATE		
CHECKED		DATE		
DRAWN		DATE		
MATERIAL			SIZE	ISSUE
FINISH			CODE IDENT NO.	DWG NO.
			C 82679	LD2415
SCALE			SHEET	OF

QTY / UNIT	MODEL USED ON	ASS'Y NO.
1	AP199	
APPLICATION		
CODE		

NOTICE TO PERSONS RECEIVING THIS DRAWING
 THE TECHNICAL MATERIEL CORPORATION claims proprietary right in the material disclosed hereon. This drawing is issued in confidence for engineering information only and may not be reproduced or used to manufacture anything shown hereon without permission from THE TECHNICAL MATERIEL CORPORATION to the user. This drawing is loaned for mutual assistance and is subject to recall at any time.

4

3

2

1

LD2415