

4

3

2

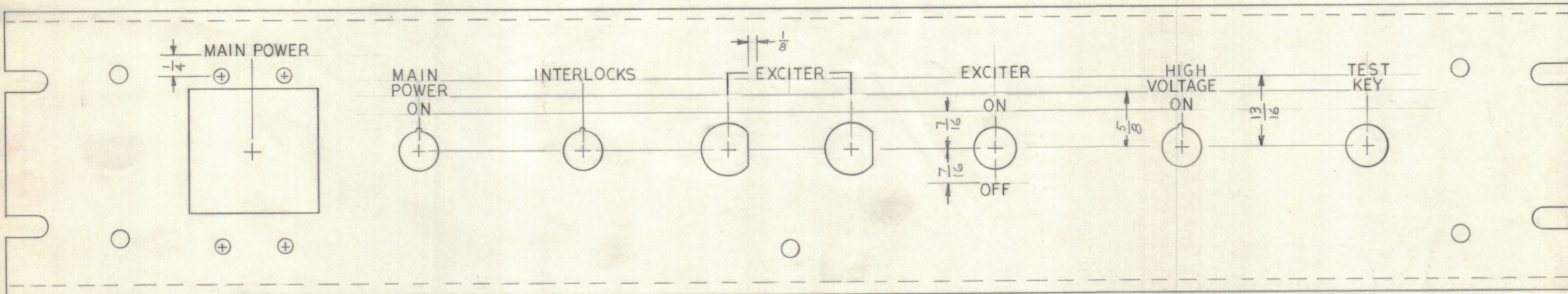
1

REVISIONS					DATE	APPROVED
E.M.N.NO	DRAFT	CHKD	ZONE	LTR	DESCRIPTION	
	(C)			Ø	ORIGINAL RELEASE FOR PRODUCTION	5/27/70

1. ALL ENGRAVING TO BE 1/8" HIGH, WHITE FILLED GOTHIC.

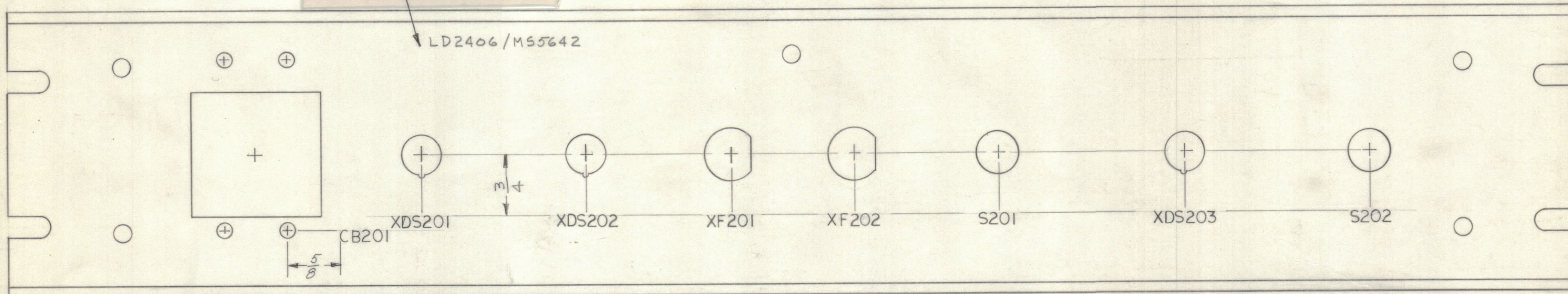
HEIGHT	DEPTH	WIDTH
1/8	.010	.020
LINES	.010	.015

ENGRAVING - FRONT VIEW



MARK TMC PART NUMBER 1/8 HIGH GOTHIC WITH LATEST REVISION LETTER ON REAR OF PANEL

MARKING - REAR VIEW



MARKING PROCESS: AS PER TMC SPECIFICATION S727  
LETTERING: 1/8 HIGH BLACK GOTHIC, LOCATED AS SHOWN

REF: MS 5642

QTY. REQ.	ITEM	PART NO.	DESCRIPTION	SYMBOL
BUDETTI LIST OF MATERIAL				
FINAL APPROVAL		DATE	THE TECHNICAL MATERIEL CORP. MAMARONECK, NEW YORK	
MECH. DES.		DATE		
ELECT. DES.		DATE		
CHECKED		DATE		
DRAWN		DATE	MARKING, FRONT PANEL	
SIZE	CODE IDENT NO.	DWG NO.	ISSUE	
C	82679	LD2406	Ø	
SCALE			SHEET OF	

QTY / UNIT	MODEL USED ON	ASS'Y NO.
	APP-18	
APPLICATION		
CODE		
<p>NOTICE TO PERSONS RECEIVING THIS DRAWING</p> <p>THE TECHNICAL MATERIEL CORPORATION claims proprietary right in the material disclosed hereon. This drawing is issued in confidence for engineering information only and may not be reproduced or used to manufacture anything shown hereon without permission from THE TECHNICAL MATERIEL CORPORATION to the user. This drawing is loaned for mutual assistance and is subject to recall at any time.</p>		
MATERIAL		
FINISH		

4

3

2

1

LD2406

A