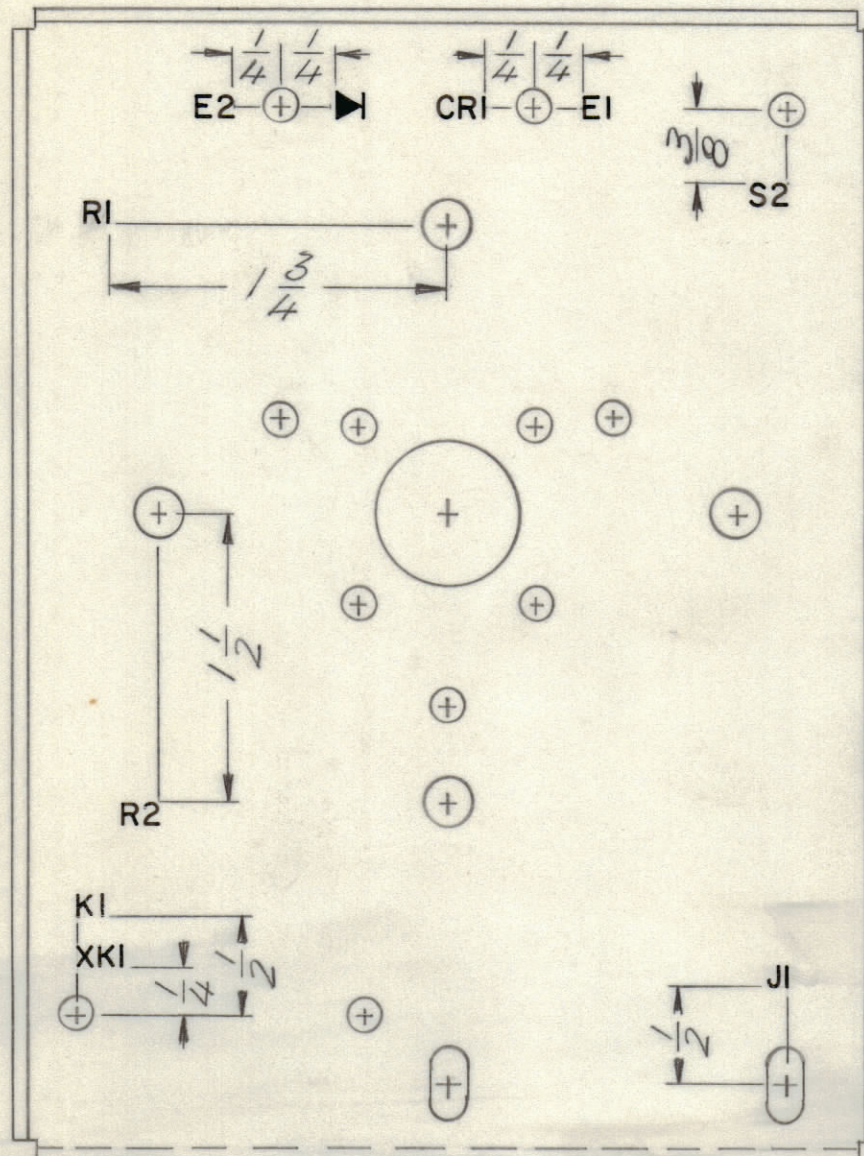
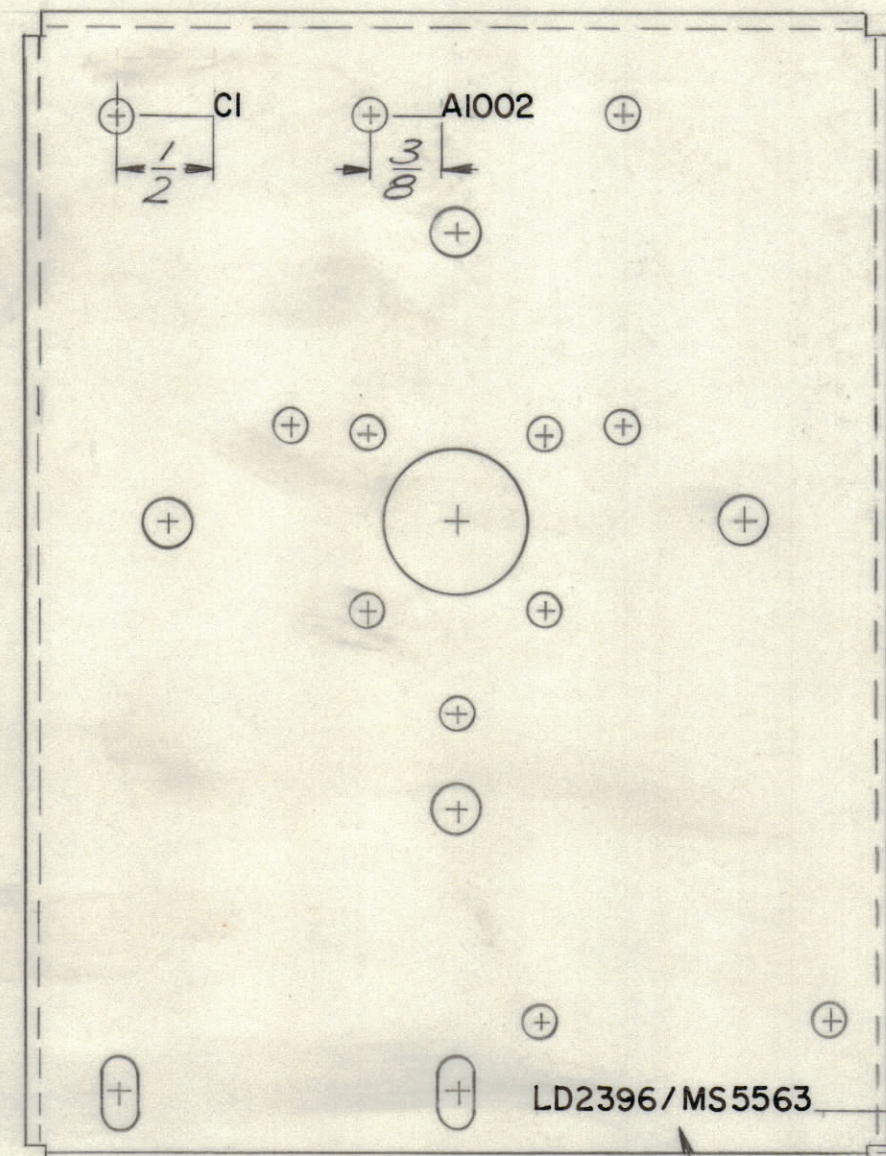


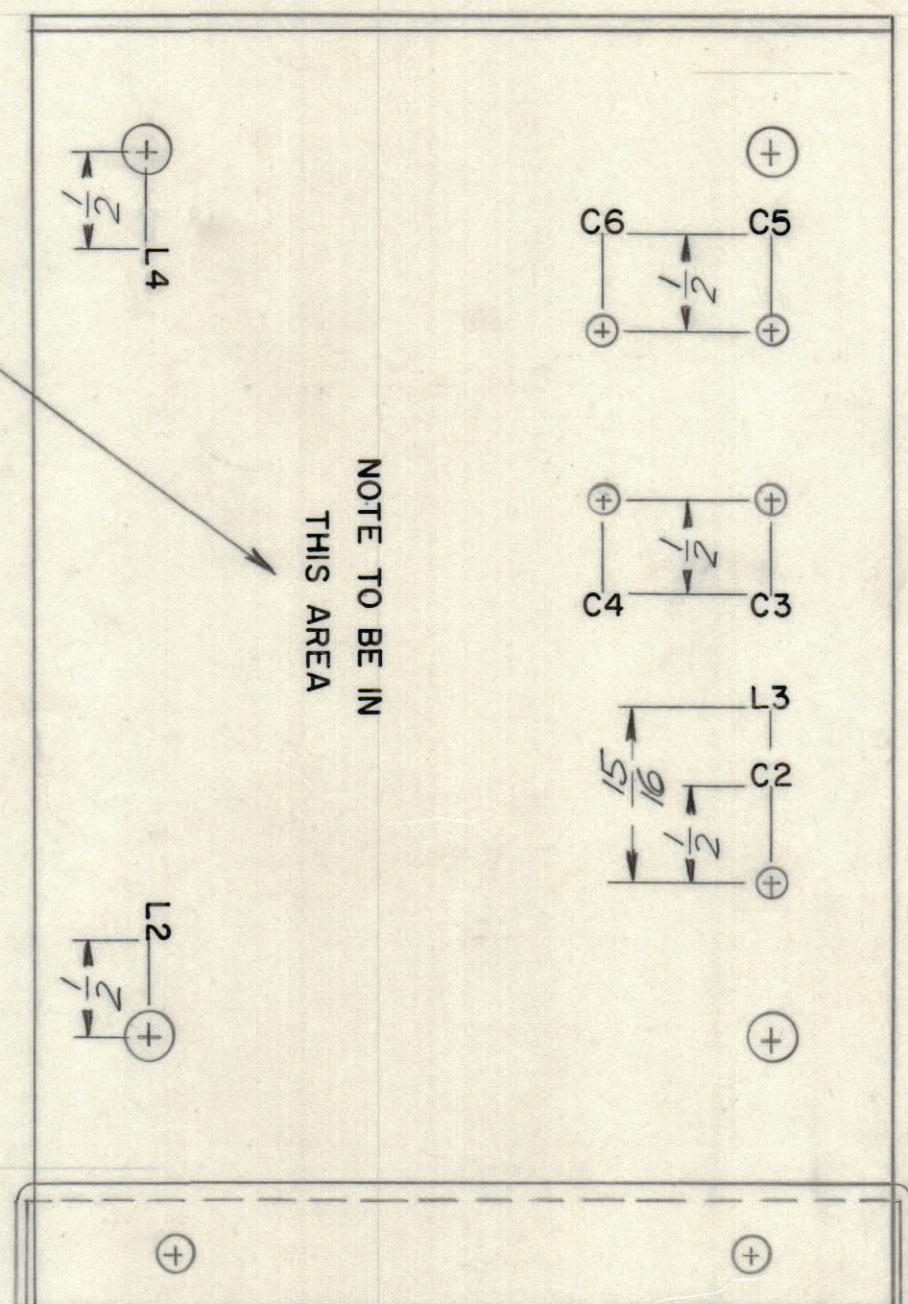
REVISIONS							
E.M.N.NO	DRAFT	CHKD	ZONE	LTR	DESCRIPTION	DATE	APPROVED
	4			X	EXP. RELEASE	1/21/70	
	5			B	ORIGINAL RELEASE FOR PRODUCTION	1/30/70	



FRONT-OUTSIDE VIEW



FRONT-INSIDE VIEW



BOTTOM-INSIDE VIEW

PARTIAL REFERENCE DESIGNATIONS ARE SHOWN. PREFIX THE PART DESIGNATION WITH THE SUB-ASSEMBLY DESIGNATION

NOTE TO BE IN THIS AREA

UNLESS OTHERWISE SPECIFIED:  
 MARKING PROCESS: AS PER TMC SPECIFICATION S727  
 LETTERING: 1/8 HIGH BLACK GOTHIC, LOCATED AS SHOWN

MARK TMC PART NUMBER  
 1/8 HIGH GOTHIC WITH LATEST  
 REVISION LETTER

REF: MS 5563

1	PALA-10K	AS146
QTY / UNIT	MODEL USED ON	ASS'Y NO.
APPLICATION		
CODE		

NOTICE TO PERSONS RECEIVING THIS DRAWING  
 THE TECHNICAL MATERIEL CORPORATION claims proprietary right in the material disclosed hereon. This drawing is issued in confidence for engineering information only and may not be reproduced or used to manufacture anything shown hereon without permission from THE TECHNICAL MATERIEL CORPORATION to the user. This drawing is loaned for mutual assistance and is subject to recall at any time.

UNLESS OTHERWISE SPECIFIED DIMENSIONS ARE IN INCHES AND INCLUDE CHEMICALLY APPLIED OR PLATED FINISHES

TOLERANCES ON  
 DECIMALS      FRACTIONS  
 .X ± .05        ± 1/64  
 .XX ± .01        ANGLES  
 .XXX ± .005     ± 0° -30'

MATERIAL

FINISH

QTY. REQ.	ITEM	PART NO.	DESCRIPTION	SYMBOL
BUDETTI LIST OF MATERIAL				
FINAL APPROVAL		DATE	THE TECHNICAL MATERIEL CORP. MAMARONECK, NEW YORK	
MECH. DES.		DATE		
ELECT. DES.		DATE		
CHECKED		DATE		
DRAWN		DATE	MARKING, B.D. SW. WRAPAROUND	
SIZE	CODE IDENT NO.	DWG NO.	ISSUE	
C	82679	LD2396	D	
SCALE			SHEET	OF
			1	1

LD2396