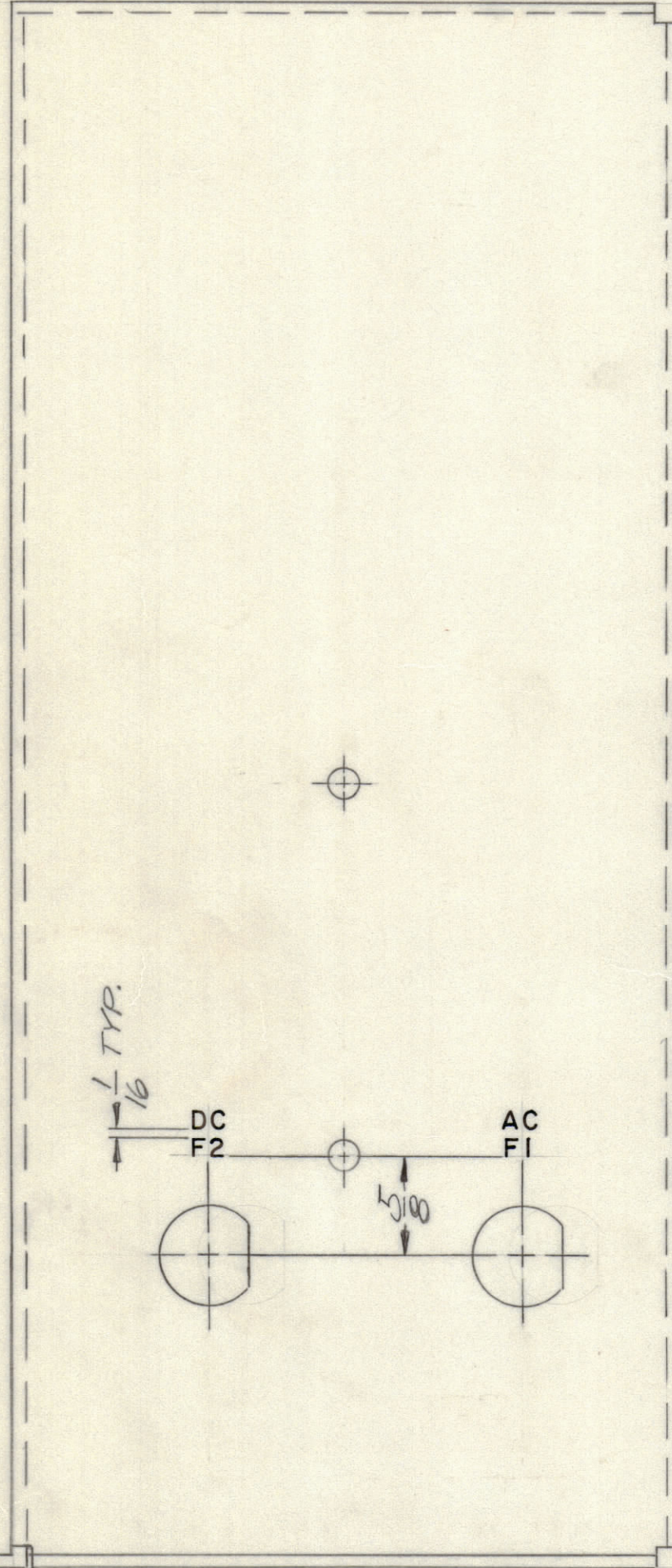
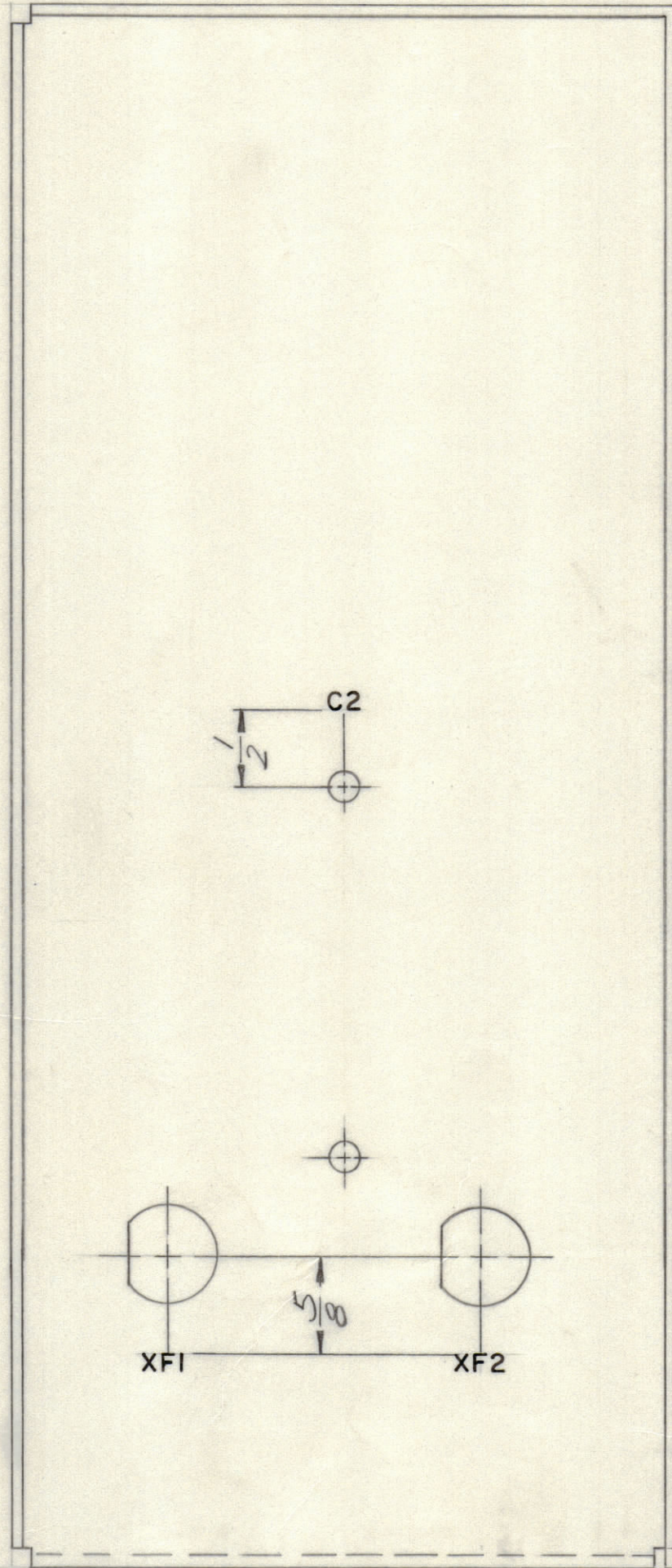


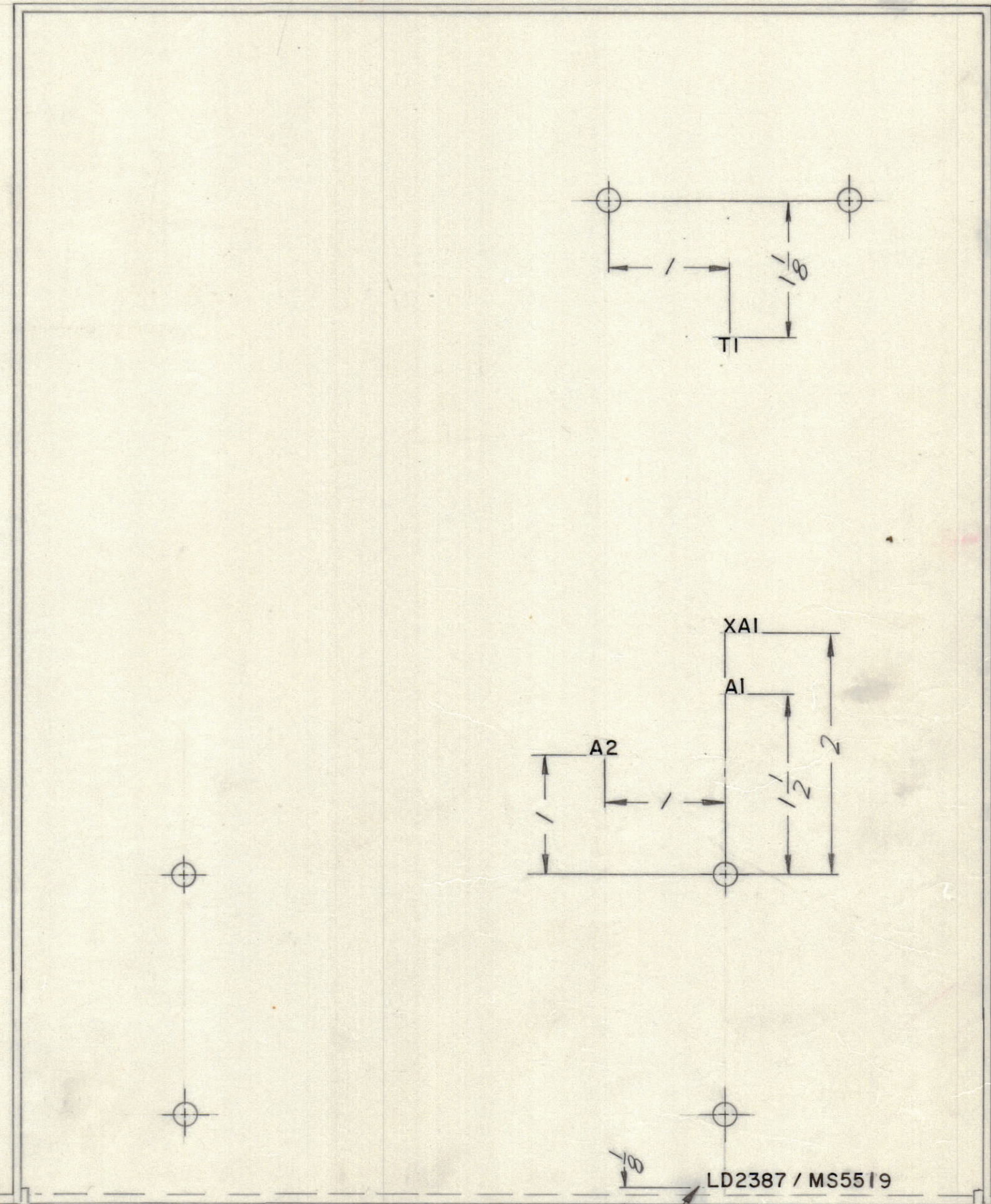
REVISIONS							
E.M.N.NO	DRAFT	CHKD	ZONE	LTR	DESCRIPTION	DATE	APPROVED
	KH			X	EXP. RELEASE	10/29/69	
	(S)			B	ORIGINAL RELEASE FOR PRODUCTION	1/14/70	



LEFT SIDE
OUTSIDE VIEW



LEFT SIDE
INSIDE VIEW



INSIDE VIEW

UNLESS OTHERWISE SPECIFIED:
 MARKING PROCESS: AS PER TMC SPECIFICATION S727
 LETTERING: 1/8 HIGH BLACK GOTHIC, LOCATED AS SHOWN

QTY / UNIT	MODEL USED ON	ASS'Y NO.
1	TPALA 10K	AX5084
APPLICATION		
	CODE	

NOTICE TO PERSONS RECEIVING THIS DRAWING
 THE TECHNICAL MATERIEL CORPORATION claims proprietary right in the material disclosed hereon. This drawing is issued in confidence for engineering information only and may not be reproduced or used to manufacture anything shown hereon without permission from THE TECHNICAL MATERIEL CORPORATION to the user. This drawing is loaned for mutual assistance and is subject to recall at any time.

REF.: MS 5519

UNLESS OTHERWISE SPECIFIED
 DIMENSIONS ARE IN INCHES
 AND INCLUDE CHEMICALLY APPLIED
 OR PLATED FINISHES

TOLERANCES ON

DECIMALS	FRACTIONS
.X ± .05	± 1/64
.XX ± .01	ANGLES
.XXX ± .005	± 0° -30'

MATERIAL

FINISH

QTY. REQ.	ITEM	PART NO.	DESCRIPTION	SYMBOL		
	BUDETTI		LIST OF MATERIAL			
	FINAL APPROVAL	DATE	THE TECHNICAL MATERIEL CORP. MAMARONECK, NEW YORK			
	MECH. DES.	DATE				
	ELECT. DES.	DATE				
	CHECKED	DATE				
	DRAWN	DATE	MARKING, LOAD CAP CHASSIS			
			SIZE	CODE IDENT NO.	DWG NO.	ISSUE
			C	82679	LD 2387	φ
SCALE 1:1			SHEET	OF		

LD2387 φ