

5

4

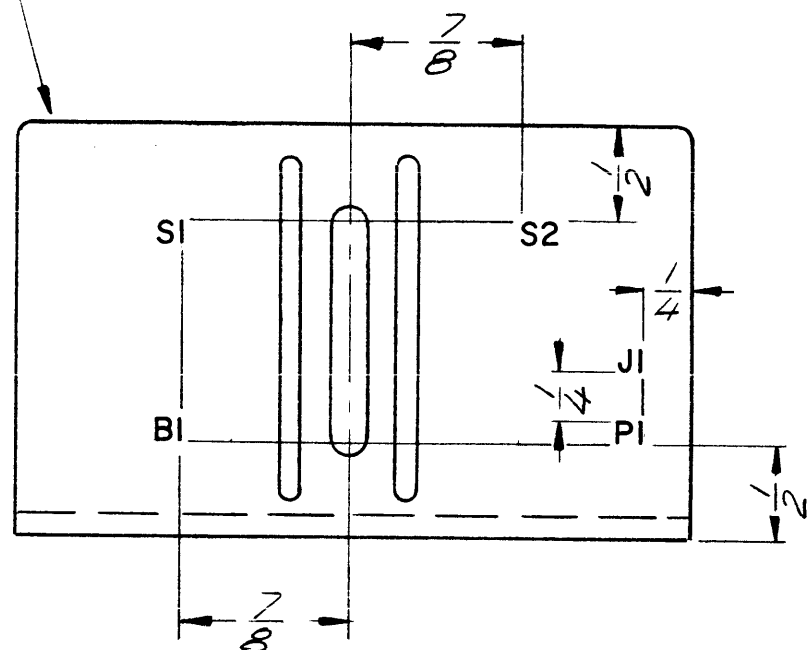
3

2

1

REVISIONS						
ZONE	LIR	DESCRIPTION	DATE	E.M.N.NO	DRAFT	CHKD APPD
	X	EXP. RELEASE	10/28/69		[Signature]	
	Ø	ORIGINAL RELEASE	1/14/70		(W)	

MARK TMC PART NUMBER
1/8 HIGH GOTHIC WITH LATEST
REVISION LETTER ON



UNLESS OTHERWISE SPECIFIED:

MARKING PROCESS: AS PER TMC SPECIFICATION S727

LETTERING: 1/8 HIGH BLACK GOTHIC, LOCATED AS SHOWN

REF.: MS5550

REQ'D	ITEM	PART NUMBER	DESCRIPTION	SYM.
BUDETTI				
LIST OF MATERIAL				
THE TECHNICAL MATERIEL CORP. MAMARONECK, NEW YORK				
MARKING, MOTOR MTG. PL				
SIZE	CODE IDENT. NO.	DWG NO.	ISSUE	
B	82679	LD 2384	Ø	
SCALE 1:1			SHEET OF	

QTY / UNIT	MODEL USED ON	ASS'Y NO.
2	PALA-10K	AX5084
APPLICATION		
	CODE	

NOTICE TO PERSONS RECEIVING THIS DRAWING
THE TECHNICAL MATERIEL CORPORATION claims proprietary right in the material disclosed hereon. This drawing is issued in confidence for engineering information only and may not be reproduced or used to manufacture anything shown hereon without permission from THE TECHNICAL MATERIEL CORPORATION to the user. This drawing is loaned for mutual assistance and is subject to recall at any time.

UNLESS OTHERWISE SPECIFIED
DIMENSIONS ARE IN INCHES
AND INCLUDE CHEMICALLY APPLIED
OR PLATED FINISHES

DECIMALS	FRACTIONS	TOLS.	ANGLES
.X ± .05	1/64		
.XX ± .01			0° -30'
.XXX ± .005			

MATERIAL
FINISH

FINAL APPROVAL	DATE
[Signature]	1-12-70
MECH. DES.	DATE
[Signature]	12/24/70
ELECT. DES.	DATE
CHECKED	DATE
DRAWN	DATE
[Signature]	10/28/69

5

4

3

2

1