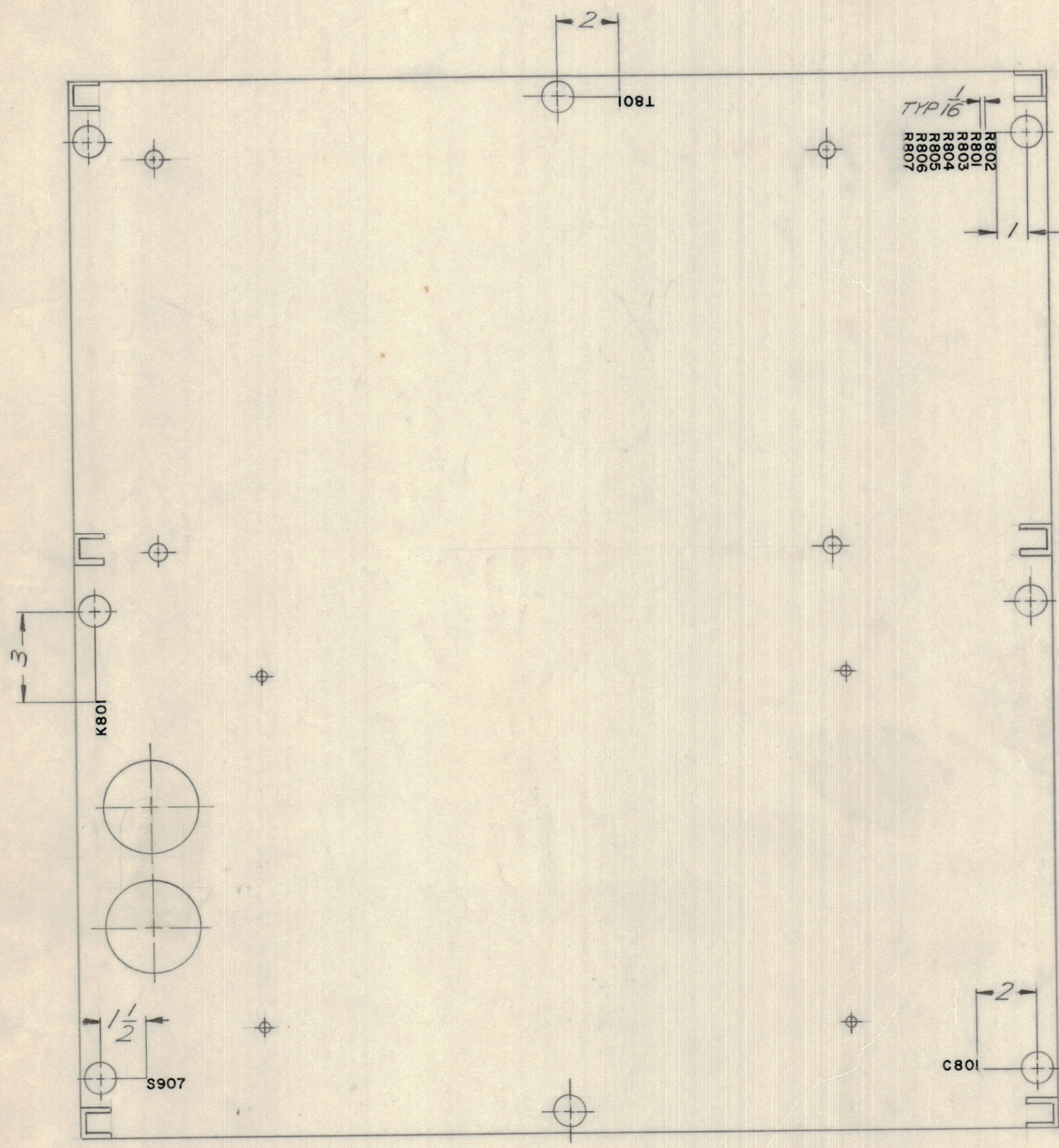
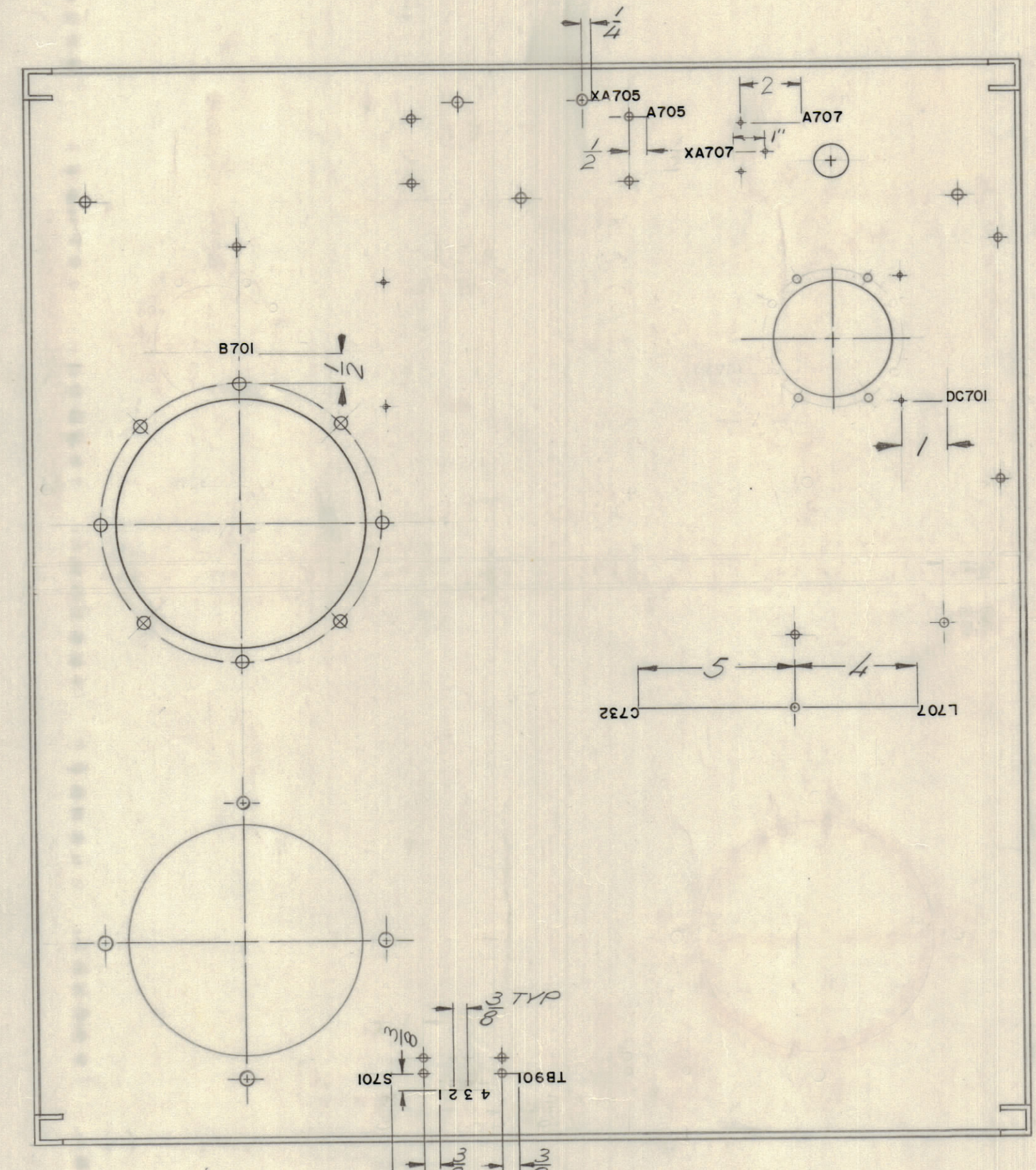


REVISIONS							
E.M.N.NO.	DRAFT	CHKD	ZONE	LTR	DESCRIPTION	DATE	APPROVED
	KH		X		EXP. RELEASE	10/24/69	
	KL		X1		L 713 & C 740 ADD.	11/17/69	
	KD		X2		ADD A 707	11/19/70	
	GE				ORIGINAL RELEASE FOR PRODUCTION	1-14-70	
19778	KLL	W.P.	A		DELE L 713, C 740	3/9/70	RT
20594	GE	EJ	B		RELOCATE DC 701 ON RACK TOP	4/12/72	EG
20738	CE	Φ	C		NO CHG. SEE OTHER SHEETS	6/14/72	EG
21020	CE	EJ	D		SEE SHEET 3	4/25/73	EG



SECT. EE TOP VIEW



RACK TOP BOTTOM VIEW

UNLESS OTHERWISE SPECIFIED:
 MARKING PROCESS: AS PER TMC SPECIFICATION S727
 LETTERING: 1/8 HIGH BLACK GOTHIC, LOCATED AS SHOWN

REF.: MS 5530

QTY / UNIT	MODEL USED ON	ASS'Y NO.
1	PA1A-10K	AX 5085
APPLICATION		
CODE		

UNLESS OTHERWISE SPECIFIED DIMENSIONS ARE IN INCHES AND INCLUDE CHEMICALLY APPLIED OR PLATED FINISHES

TOLERANCES ON	
DECIMALS	FRACTIONS
.X ± .05	± 1/64
.XX ± .01	ANGLES
.XXX ± .005	± 0° - 30'

QTY. REQ.	ITEM	PART NO.	DESCRIPTION	SYMBOL
F.B. LIST OF MATERIAL				
THE TECHNICAL MATERIEL CORP. MAMARONECK, NEW YORK				
MARKING, MAIN FRAME				
MATERIAL		SIZE CODE IDENT NO. DWG NO.		ISSUE
FINISH		D 82679	LD 2379	D
SCALE				SHEET 1 OF 4

NOTICE TO PERSONS RECEIVING THIS DRAWING
 THE TECHNICAL MATERIEL CORPORATION claims proprietary right in the material disclosed hereon. This drawing is issued in confidence for engineering information only and may not be reproduced or used to manufacture anything shown hereon without permission from THE TECHNICAL MATERIEL CORPORATION to the user. This drawing is loaned for mutual assistance and is subject to recall at any time.