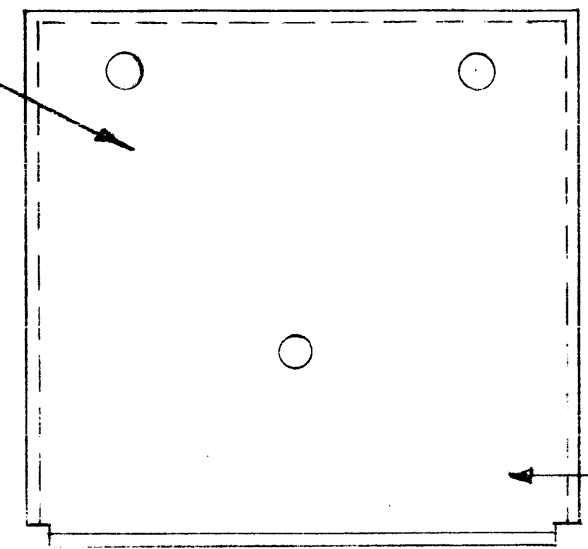


REVISIONS						
ZONE	LTR	DESCRIPTION	DATE	E.M.N.NO	DRAFT	CHKD APPD
	Ø	ORIGINAL RELEASE	7/26/70		Ø	

PARTIAL REFERENCE DESIGNATIONS ARE SHOWN. PREFIX THE PART DESIGNATION WITH THE SUBASSEMBLY DESIGNATION.



TO BE MARKED WITH $\frac{1}{16}$ SPACING BETWEEN LINES. LEAVE CLEARANCE FOR SCREW HEADS IN HOLES.

MARK TMC PART NUMBER
1/8 HIGH GOTHIC WITH LATEST REVISION LETTER ON REAR OF PANEL
LD2371/M55555

MARKING PROCESS: AS PER TMC SPECIFICATION S727
LETTERING: 1/8 HIGH BLACK GOTHIC, LOCATED AS SHOWN

REF: M55555

REQ'D	ITEM	PART NUMBER	DESCRIPTION	SYM.
			BUDETTI LIST OF MATERIAL	
FINAL APPROVAL		DATE	THE TECHNICAL MATERIEL CORP. MAMARONECK, NEW YORK	
MECH. DES.		DATE		
ELECT. DES.		DATE		
CHECKED		DATE		
DRAWN		DATE	MARKING, TUNE CAP. CHAS.	
SIZE	CODE IDENT. NO.	DWG NO.	ISSUE	
B	82679	LD2371	Ø	
SCALE		SHEET		OF

QTY / UNIT	MODEL USED ON	ASS'Y NO.
1	PALA-10K	AX5080
APPLICATION		
CODE		

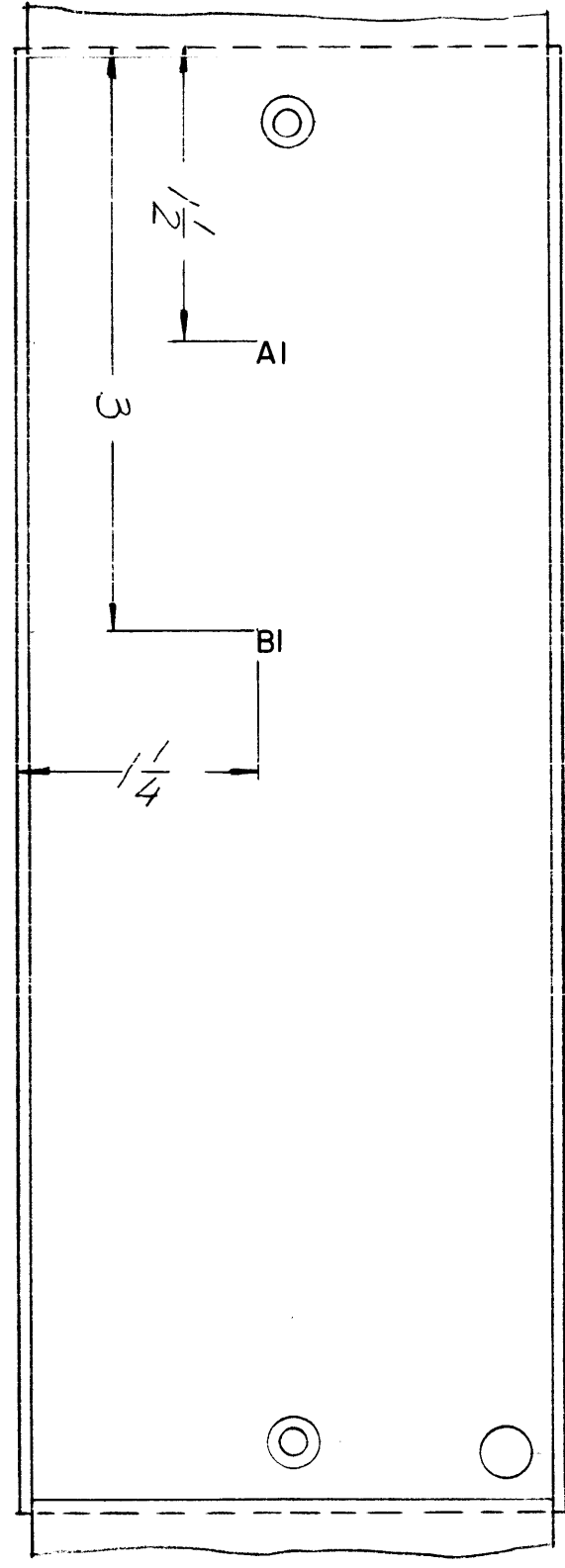
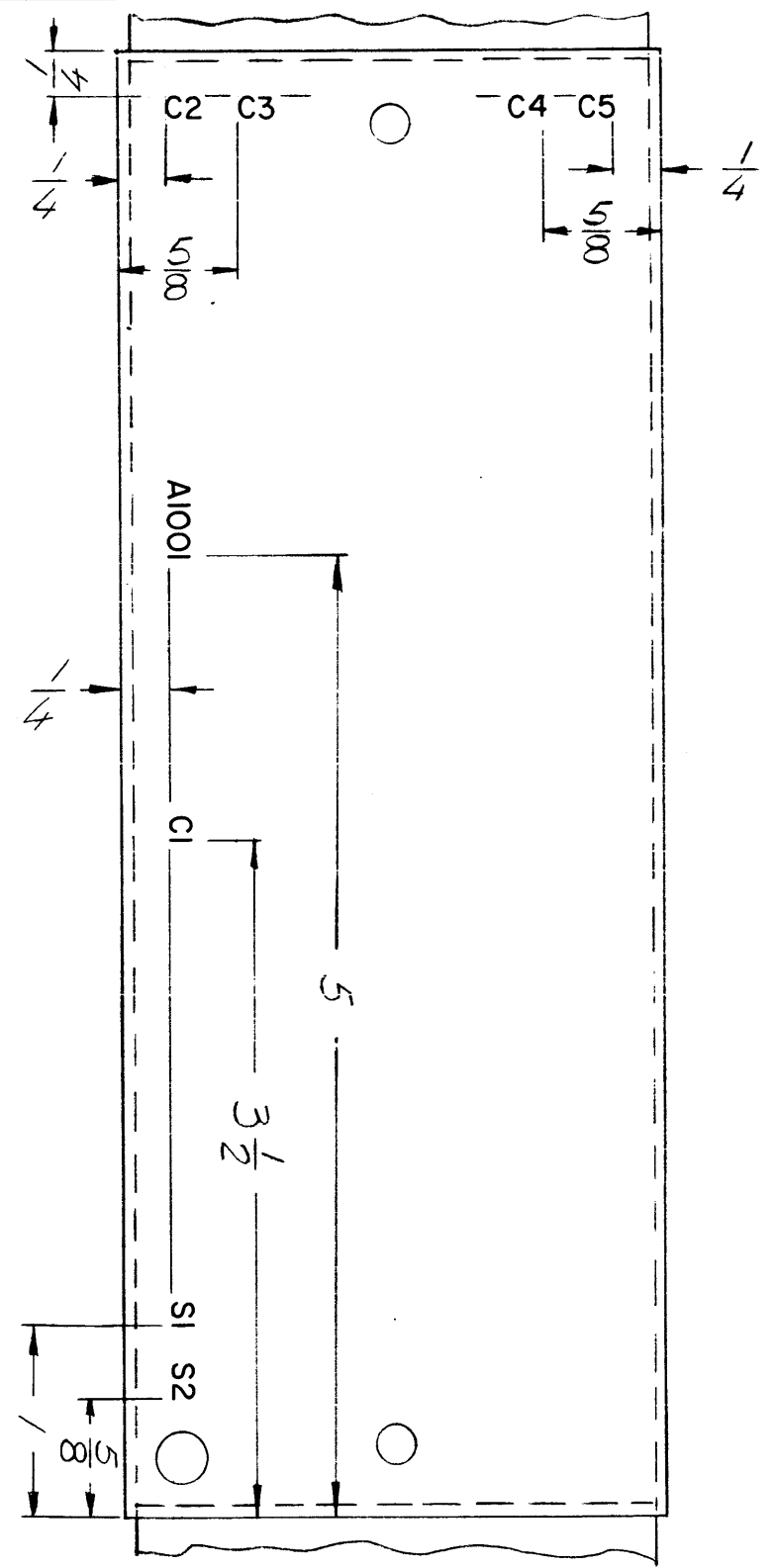
NOTICE TO PERSONS RECEIVING THIS DRAWING
THE TECHNICAL MATERIEL CORPORATION claims proprietary right in the material disclosed hereon. This drawing is issued in confidence for engineering information only and may not be reproduced or used to manufacture anything shown hereon without permission from THE TECHNICAL MATERIEL CORPORATION to the user. This drawing is loaned for mutual assistance and is subject to recall at any time.

UNLESS OTHERWISE SPECIFIED DIMENSIONS ARE IN INCHES AND INCLUDE CHEMICALLY APPLIED OR PLATED FINISHES

DECIMALS	FRACTIONS
.X ± .05	TOLS. 1/64
.XX ± .01	ANGLES 0° - 30'
.XXX ± .005	

MATERIAL

FINISH



5 4 3 2 1

D

C

B

A