

4

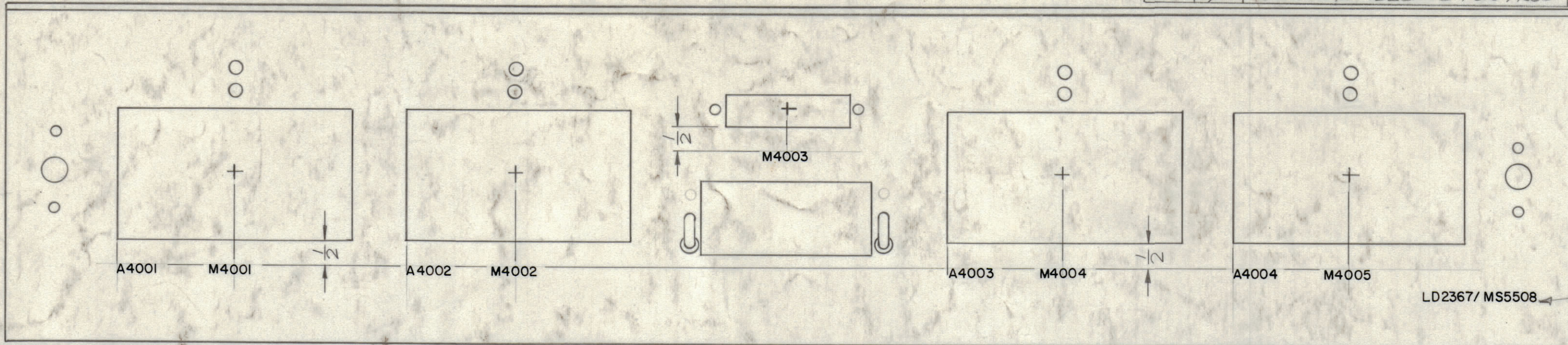
3

2

1

MARKING PROCESS: AS PER TMC SPECIFICATION S727
 LETTERING: 1/8 HIGH BLACK GOTHIC, LOCATED AS SHOWN

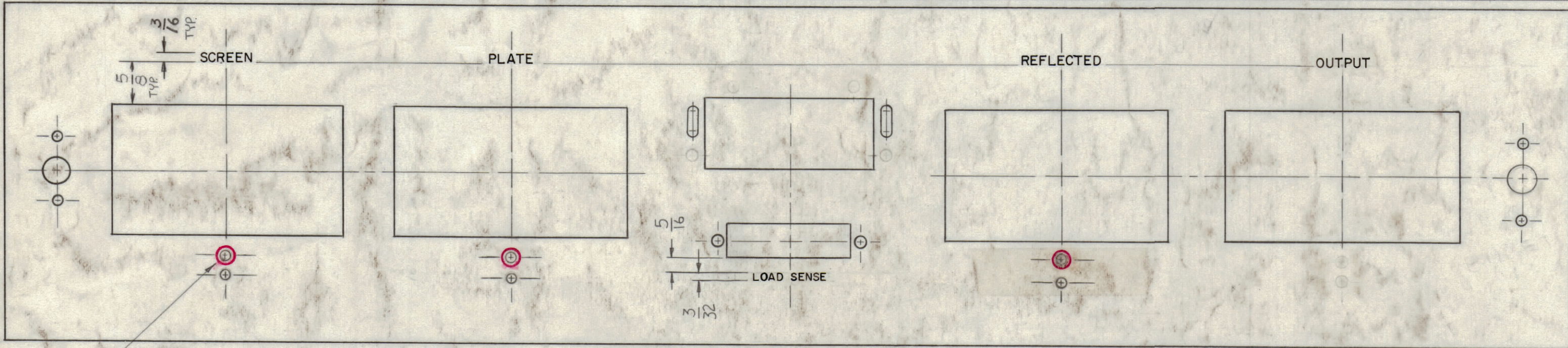
REVISIONS						
ZONE	LTR	DESCRIPTION	DATE	E.M.N.NO	DRAFT	CHKD APPD
	X	EXP RELEASE	6/6/69		KH	
	X1	CHG'D 'FORWARD' TO 'OUTPUT' & ADD 3 RED CIRCLES	6-23-69		RS	
	X2	ADDED REAR VIEW	9-15-69		JM	
	X3	REAR MARKING ADD.	9-17-69		GE	
	Ø	ORIGINAL RELEASE FOR PROD	1-14-70		GE	



MARK TMC PART NUMBER
 1/8 HIGH GOTHIC WITH LATEST
 REVISION LETTER ON REAR OF PANEL

LD2367/MS5508

MARKING - REAR



ENGRAVING - FRONT

5/16 DIA CIRCLES
 3 REQ'D - RED

LETTERING AS PER TMC SPEC. NO. S - 566
 ALL LETTER GROUPS TO BE CENTERED ON HOLES (OR SLOTS)
 ENGRAVING TO BE GOTHIC WHITE FILLED SIZE SHOWN ON CHART.

HEIGHT OF LETTERS	DEPTH OF STROKE	WIDTH OF STROKE
3/32	.010	.015
3/16	.010	.015

REF : MS 5508

1	PALA 10K	AX 5083
QTY / UNIT	MODEL USED ON	ASS'Y NO.
APPLICATION		
CODE		
NOTICE TO PERSONS RECEIVING THIS DRAWING THE TECHNICAL MATERIEL CORPORATION claims proprietary right in the material disclosed hereon. This drawing is issued in confidence for engineering information only and may not be reproduced or used to manufacture anything shown hereon without permission from THE TECHNICAL MATERIEL CORPORATION to the user. This drawing is loaned for mutual assistance and is subject to recall at any time.		

UNLESS OTHERWISE SPECIFIED DIMENSIONS ARE IN INCHES AND INCLUDE CHEMICALLY APPLIED OR PLATED FINISHES

TOLERANCES ON

DECIMALS	FRACTIONS
.X ± .05	± 1/64
.XX ± .01	ANGLES
.XXX ± .005	± 0° 30'

QTY. REQ.	ITEM	PART NO.	DESCRIPTION	SYMBOL
LIST OF MATERIAL				
FINAL APPROVAL: [Signature] DATE: 1-8-70 MECH. DES.: [Signature] DATE: 8 JAN 70 ELECT. DES.: [Signature] DATE: CHECKED: [Signature] DATE: DRAWN: KH DATE: 6/6/69				
THE TECHNICAL MATERIEL CORP. MAMARONECK, NEW YORK				
MARKING, METER PANEL				
MATERIAL		SIZE	CODE IDENT.NO.	DWG NO.
FINISH		C	82679	LD 2367
SCALE				ISSUE
				Ø
SHEET			OF	

4

3

2

1

LD 2367