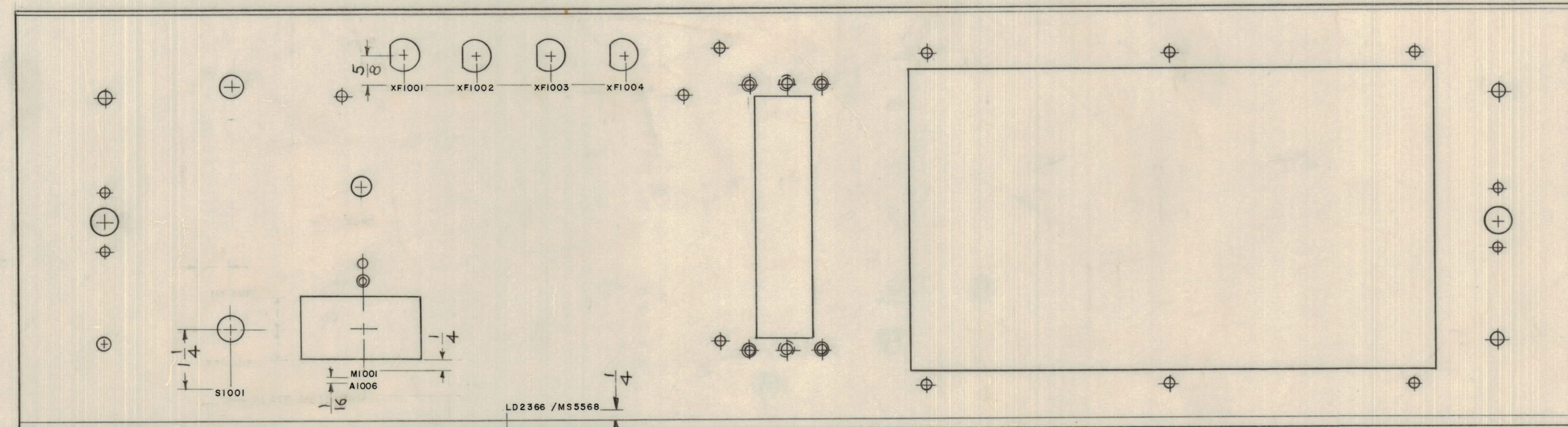
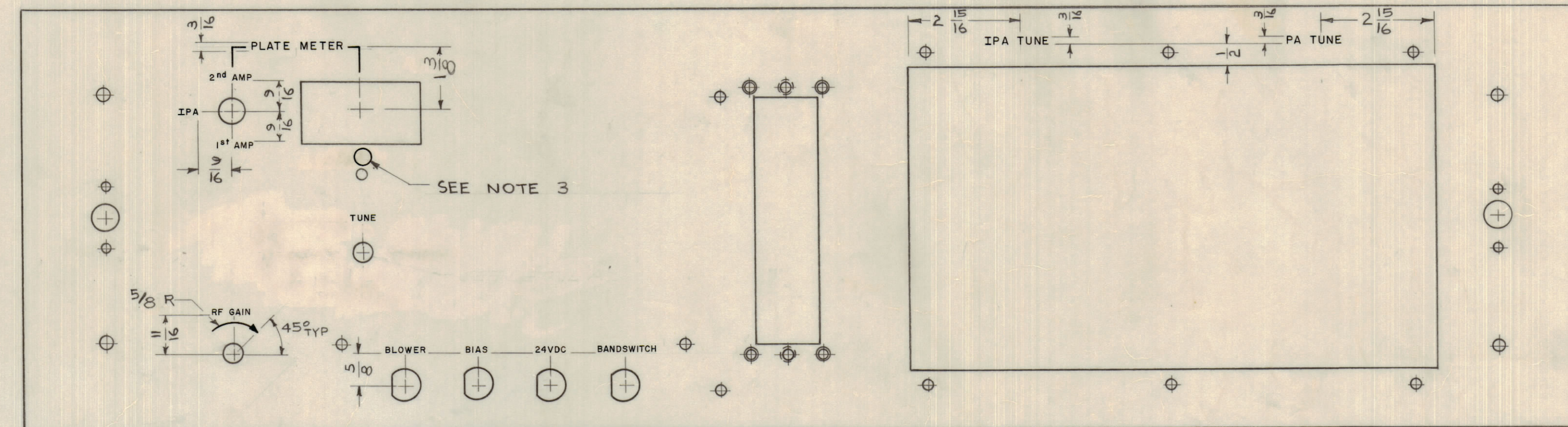


REVISIONS							
E.M.N.O	DRAFT	CHKD	ZONE	LTR	DESCRIPTION	DATE	APPROVED
	KD			X4	REDRAWN, X3 WAS 'C' SIZE	1-29-70	
	W			D	ORIGINAL RELEASE FOR PRODUCTION	2/10/70	
19908	KLF			A	DIM. F3/B WAS 1-7/8	6/23/70	FB
20518	GE			B	ADD DETAIL 'A'	1/12/72	CJ
21654	GDL			C	DETAIL 'A' DELETED	6-16-78	CB

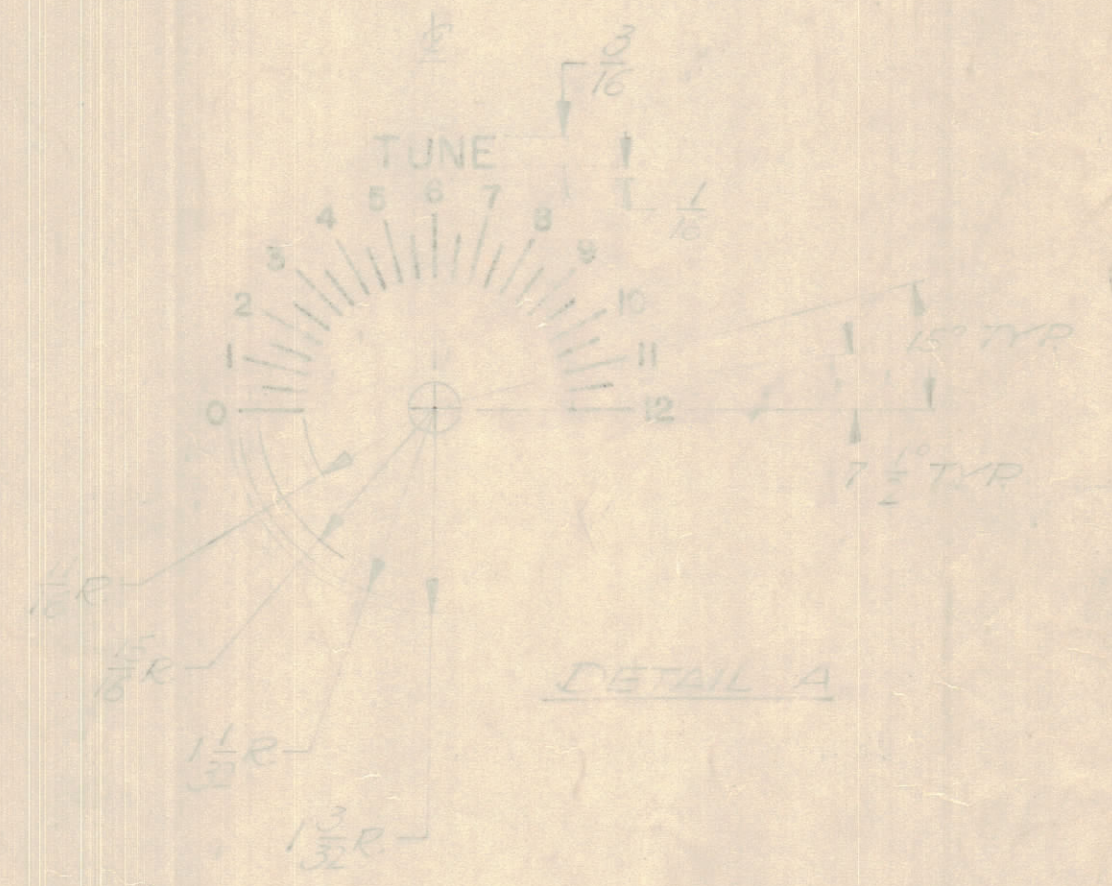


MARK TMC PART NUMBER  
1/8 HIGH GOTHIC WITH LATEST  
REVISION LETTER, LOCATED AS SHOWN

REAR VIEW



FRONT VIEW



DETAIL A

UNLESS OTHERWISE SPECIFIED:

- REAR VIEW
  - MARKING PROCESS: AS PER TMC SPECIFICATION S727
  - LETTERING: 1/8 HIGH WHITE GOTHIC, LOCATED AS SHOWN
- FRONT VIEW
  - MARKING PROCESS: AS PER TMC SPECIFICATION S566
  - LETTERING: 1/8 HIGH, GOTHIC, WHITE FILLED, ENGRAVING, LOCATED AS SHOWN
  - LINES: .010 STROKE DEPTH, .020 STROKE WIDTH
- 5/16 DIA CIRCLE, RED FILLED (1 REQ'D)

QTY / UNIT	MODEL USED ON	ASSY NO.
1	PALA 10K	AX 5080
APPLICATION		
CODE		

NOTICE TO PERSONS RECEIVING THIS DRAWING  
THE TECHNICAL MATERIEL CORPORATION claims proprietary right in the material disclosed herein. This drawing is issued in confidence for engineering information only and may not be reproduced or used to manufacture anything shown herein without permission from THE TECHNICAL MATERIEL CORPORATION to the user. This drawing is loaned for mutual assistance and is subject to recall at any time.

QTY. REQ.	ITEM	PART NO.	DESCRIPTION	SYMBOL
REF MS 5568				
BUDETTI LIST OF MATERIAL				
UNLESS OTHERWISE SPECIFIED DIMENSIONS ARE IN INCHES AND INCLUDE CHEMICALLY APPLIED OR PLATED FINISHES		FINAL APPROVAL: [Signature]	DATE: 1-28-70	<b>THE TECHNICAL MATERIEL CORP.</b> MAMARONECK, NEW YORK  <b>PANEL FRONT DRIVER</b>
TOLERANCES ON		ELECT. DES. [Signature]	DATE: 28 JAN 70	
DECIMALS	FRACTIONS	CHECKED	DATE	
.X ± .05	1/64	DRAWN: Deterlein	DATE: 1-29-70	
.XX ± .01	ANGLES			SIZE: D
.XXX ± .005	± 0° - 30'			CODE: 82679
MATERIAL			DWG NO.: LD 2366	
FINISH: SEE NOTES			ISSUE: C	
			SCALE: 1:2	SHEET OF