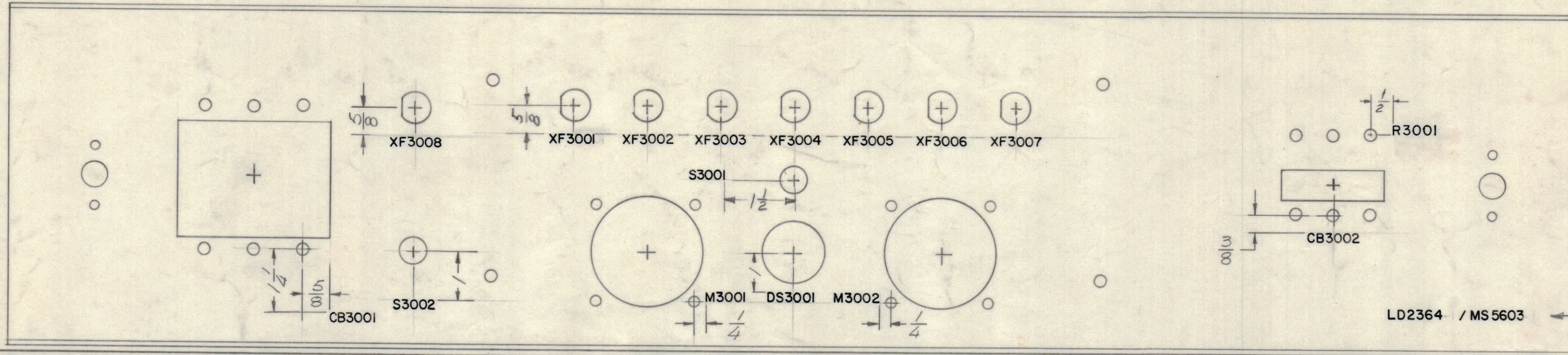
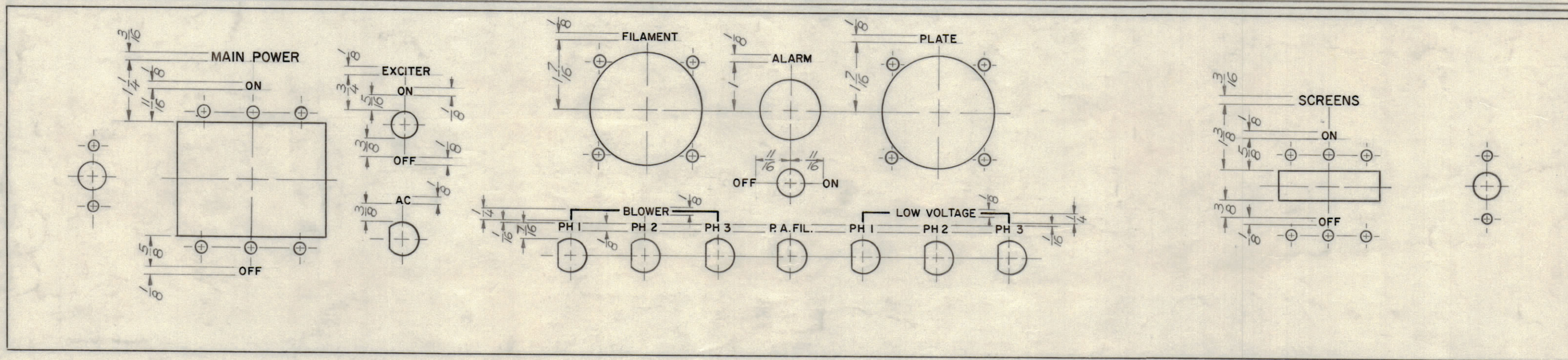


MARKING PROCESS: AS PER TMC SPECIFICATION S727
 LETTERING: 1/8 HIGH BLACK GOTHIC, LOCATED AS SHOWN

REVISIONS							
E.M.N.NO	DRAFT	CHKD	ZONE	LTR	DESCRIPTION	DATE	APPROVED
				X	EXP. RELEASE	6/9/69	
	RB			X1	ADD -1 TO MS NUMBER	6-23-69	
	GE			X2	REAR MARKING ADDED	9-19-69	
	KD			X3	ADD R3001	12-2-69	
				Ø	ORIGINAL RELEASE FOR PRODUCTION	1/14/70	



MARK TMC PART NUMBER
 1/8 HIGH GOTHIC WITH LATEST
 REVISION LETTER ON REAR OF PANEL



LETTERING AS PER TMC SPEC. NO. S-566
 ALL LETTER GROUPS TO BE CENTERED ON HOLES (OR SLOTS)
 ENGRAVING TO BE GOTHIC WHITE FILLED SIZE SHOWN ON CHART

HEIGHT OF LETTERS	DEPTH OF STROKE	WIDTH OF STROKE
1/8	.010	.020
3/16	.010	.025
DOTS	.010	
LINES	.010	

REF: MS 5603

1	PALA 10K	Ax5081
QTY / UNIT	MODEL USED ON	ASS'Y NO.
APPLICATION		
CODE		

NOTICE TO PERSONS RECEIVING THIS DRAWING
 THE TECHNICAL MATERIEL CORPORATION claims proprietary right in the material disclosed hereon. This drawing is issued in confidence for engineering information only and may not be reproduced or used to manufacture anything shown hereon without permission from THE TECHNICAL MATERIEL CORPORATION to the user. This drawing is loaned for mutual assistance and is subject to recall at any time.

UNLESS OTHERWISE SPECIFIED DIMENSIONS ARE IN INCHES AND INCLUDE CHEMICALLY APPLIED OR PLATED FINISHES

TOLERANCES ON
 DECIMALS .X ± .05
 .XX ± .01
 .XXX ± .005
 FRACTIONS ± 1/64
 ANGLES ± 0° -30°

MATERIAL
 FINISH

QTY. REQ.	ITEM	PART NO.	DESCRIPTION	SYMBOL
LIST OF MATERIAL				
THE TECHNICAL MATERIEL CORP. MAMARONECK, NEW YORK				
MARKING, MAIN PWR. PNL.				
SIZE	CODE IDENT NO.	DWG NO.	ISSUE	
C	82679	LD 2364-1	Ø	
SCALE			SHEET	OF

LD 2364-1