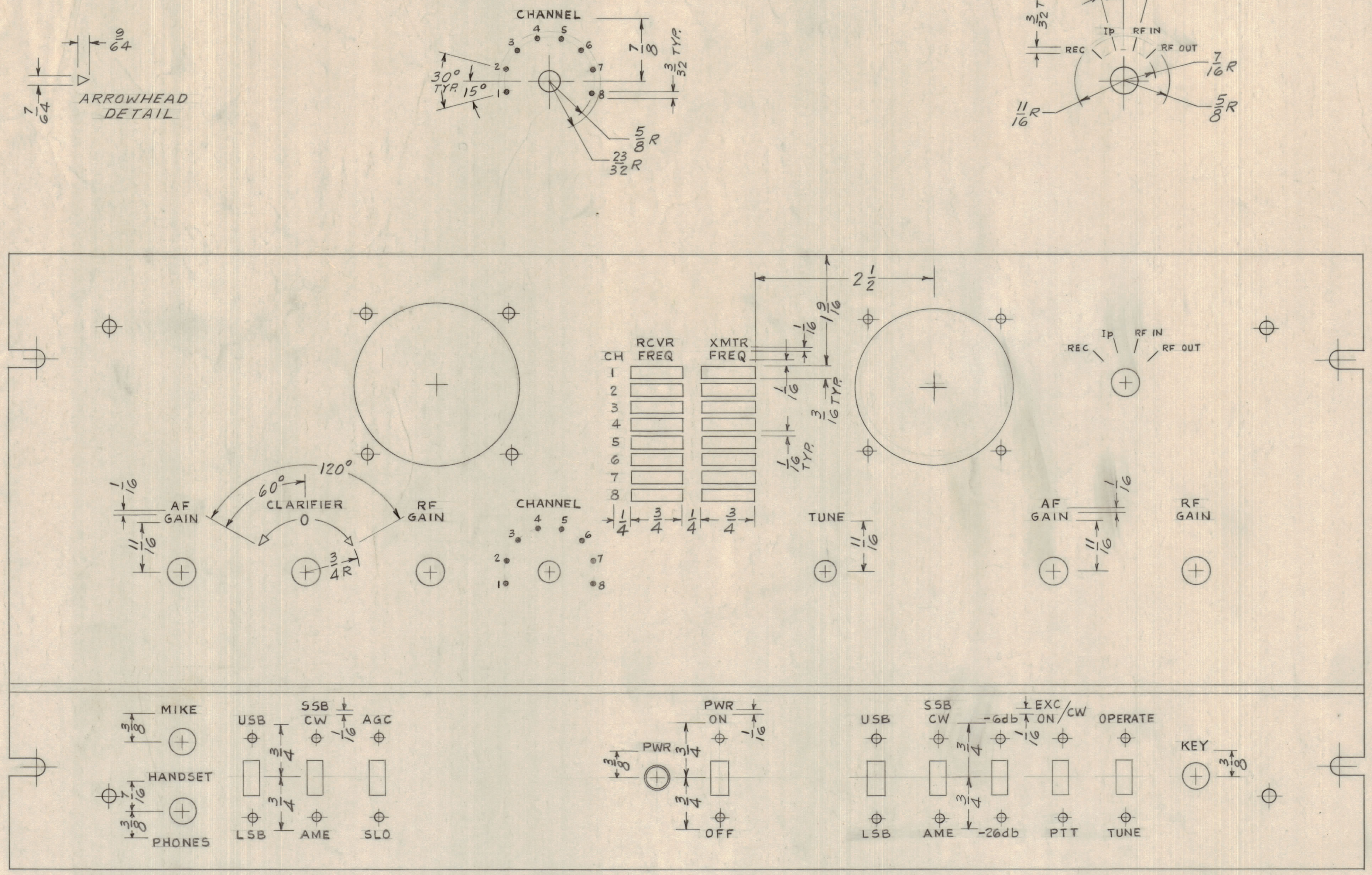


REVISIONS						
ZONE	LTR	DESCRIPTION	DATE	E. M. N. NO.	DRAFT	CHKD APPD
	Ø	ORIGINAL RELEASE FOR PRODUCTION	9/6/69		W	



FRONT VIEW SHOWN

UNLESS OTHERWISE SPECIFIED MARKING PROCESS AS PER TMC SPEC. 5727 LETTERING 1/8 HIGH * GOTHIC LOCATED AS SHOWN. ALL LETTER GROUPS TO BE CENTERED ON HOLES, CUTOUTS OR INDICATING LINES
 LINES-.020 WIDE
 DOTS-.062 DIA.
 * BLACK-ON UPPER (WHITE)
 WHITE-ON LOWER (GRAY)

QTY / UNIT	MODEL USED ON	ASS'Y NO.
	APPLICATION	
	CODE	

NOTICE TO PERSONS RECEIVING THIS DRAWING
 THE TECHNICAL MATERIEL CORPORATION claims proprietary right in the material disclosed hereon. This drawing is issued in confidence for engineering information only and may not be reproduced or used to manufacture anything shown hereon without permission from THE TECHNICAL MATERIEL CORPORATION to the user. This drawing is loaned for mutual assistance and is subject to recall at any time.

QTY. REQ.	ITEM	PART NO.	DESCRIPTION	SYMBOL
			LIST OF MATERIAL SK 9308 476	
			THE TECHNICAL MATERIEL CORP. MAMARONECK, NEW YORK	
			MARKING, FRONT PANEL	
			SIZE CODE IDENT. NO. DWG NO.	ISSUE
			D 82679 LD 2352	Ø
			SCALE	SHEET OF