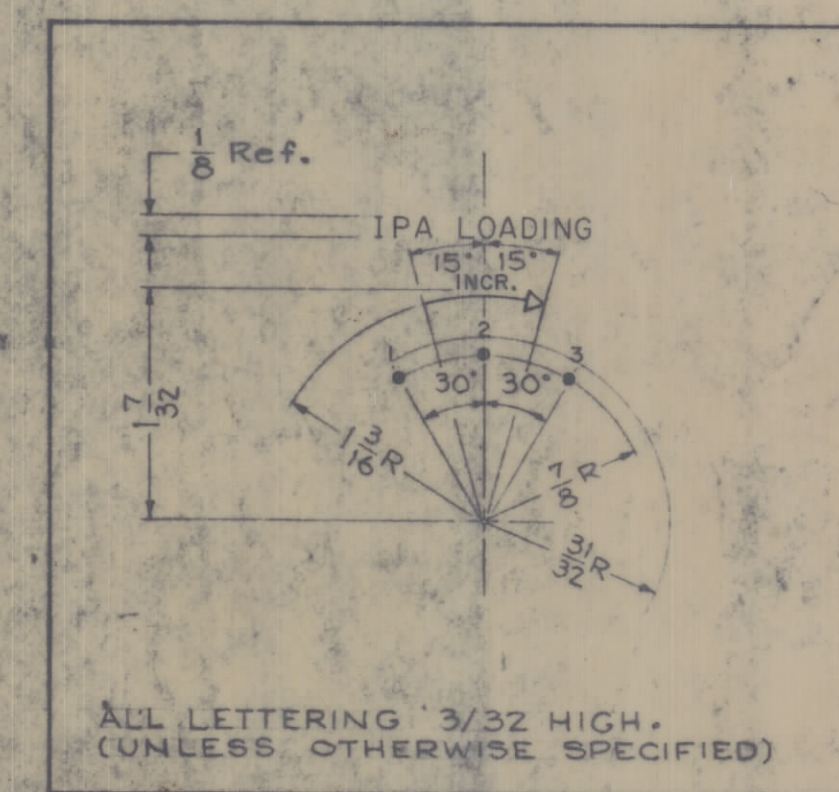
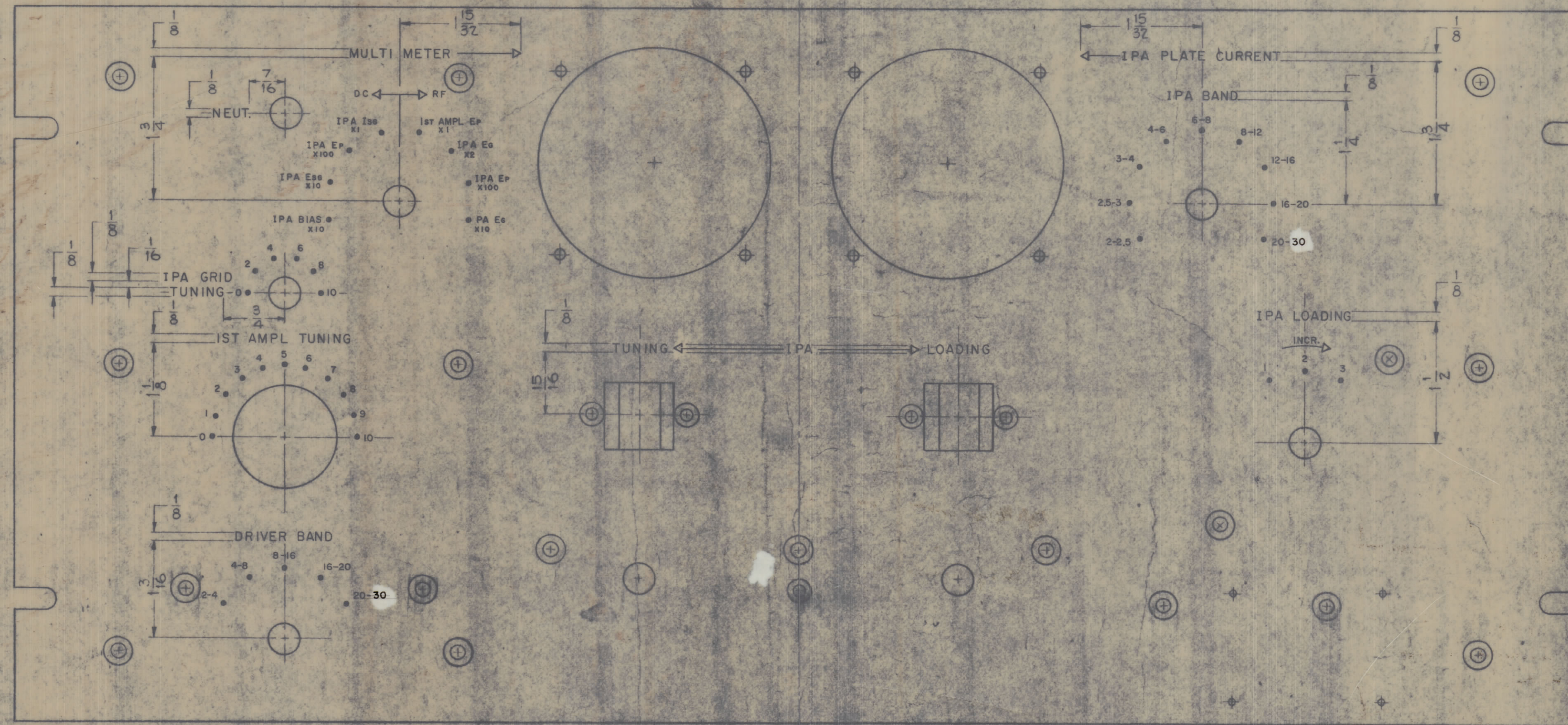
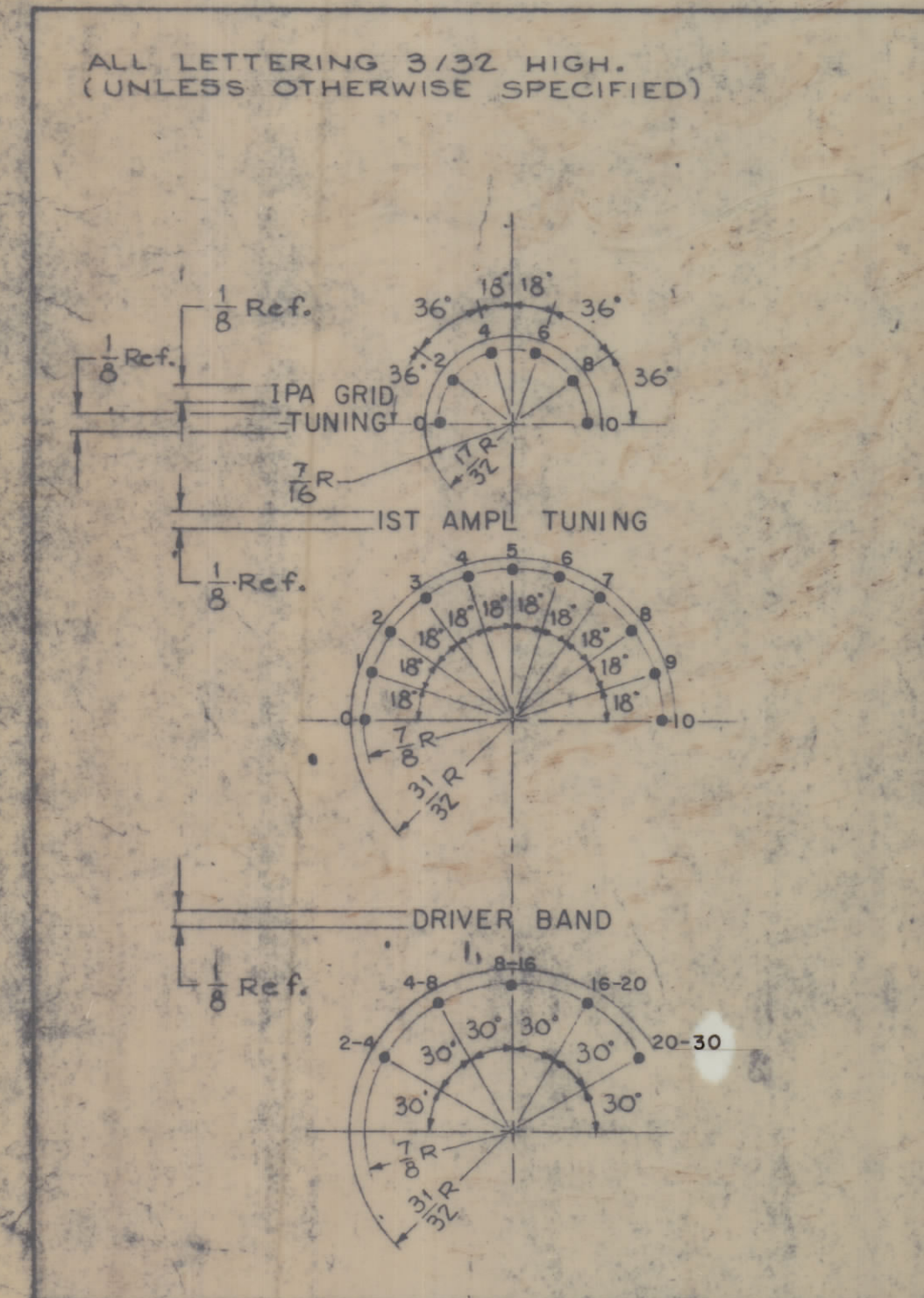
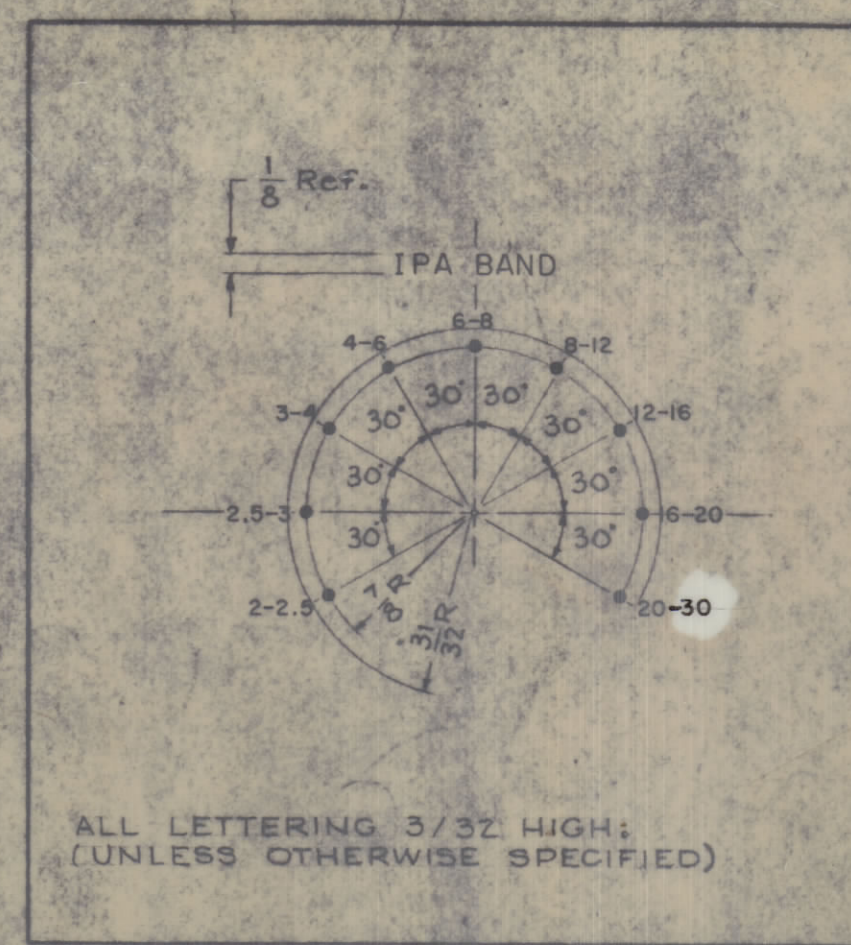
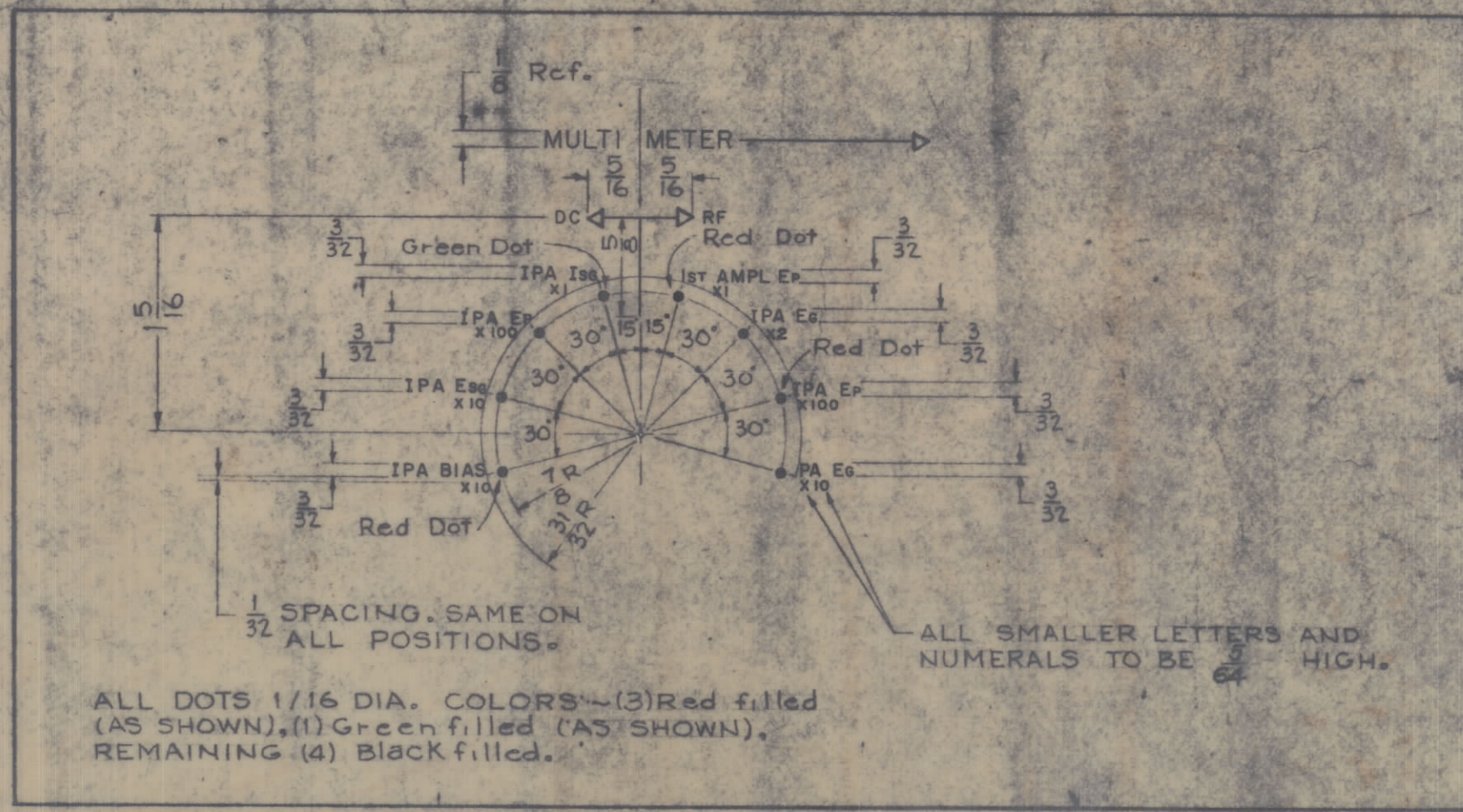


IF IT IS FOUND DESIRABLE TO CHANGE ANY TOLERANCE OR OTHER DETAIL SPECIFIED ON THIS DRAWING NOTIFY THE PURCHASER PROMPTLY.
 MAXIMUM ALLOWABLE TOLERANCES HAVE BEEN DETERMINED AND DEVIATIONS WILL BE CAUSE FOR REJECTION. REMOVE ALL BURRS AND SHARP EDGES.



- NOTES -
- 1- ALL DOTS TO BE 1/16 DIA., WHITE FILLED, UNLESS OTHERWISE SPECIFIED.
 - 2- ALL LETTERING TO BE WHITE FILLED.
 - 3- ALL ARROWHEADS TO BE 1/8 X 1/8 X 1/8 TRIANGLE, WHITE OUTLINED.
 - 4- ALL LINES TO BE WHITE FILLED.

LETTER	DEPTH OF	WIDTH OF
HETZMAT	STROKE	STROKES
5/16	.010-.012	.012-.015
3/32	.010	.015
1/8	.010	.020
DOTS	.010	—
ARROWHEADS	.010	—
SOLID LINES	.010	.015

ORIGINAL RELEASE FOR PRODUCTION	22068	0	0
EXP RELEASE	22068	+	0
ISSUE ITEM	CHANGED FROM	DATE	CH. NO. OR DATE CHECKER ENG. APP.
TOLERANCES		SCALE:	
ALL OTHERS	DEC. DIM. ±	DRILL PUNCH, COMMERCIAL STOCK SIZES AND MANUFACTURERS TOLERANCES ARE NOT INCLUDED.	

1	RFC-1C	%GPT-10KRL	2-20-68
---	--------	------------	---------

REF - TMC DWG NO. MS-1426 (8)

REQ. ITEM	PART NO.	O. POSE	DESCRIPTION	SYMBOL
THE TECHNICAL MATERIEL CORP. MAMARONECK, NEW YORK				
ENGRAVING, FRONT PANEL				
MATERIAL WEIGHT RESPC				
RFC-1C				
TYPE & TEMPER				
HEAT TREAT SPEC.				
CHECKED				
FINAL APPROVAL				

LD2307

SHEET 1 OF 2

LD2307