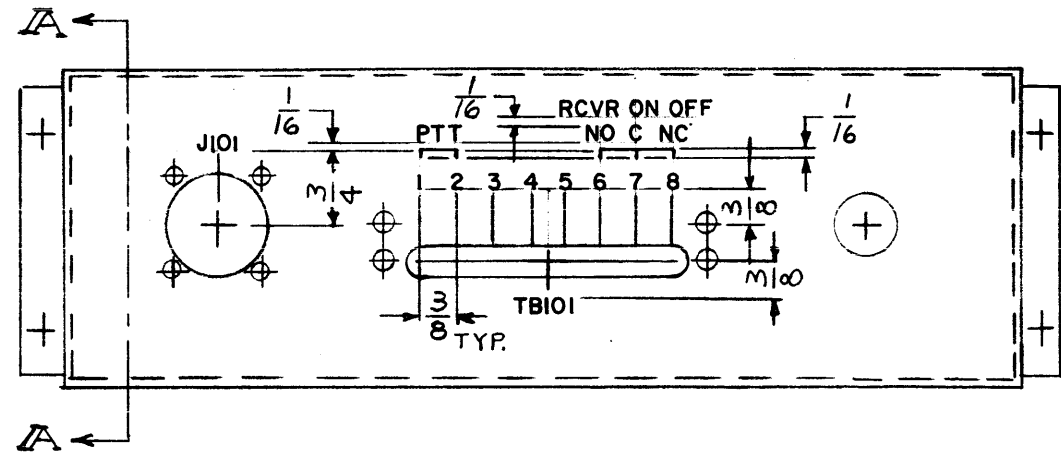
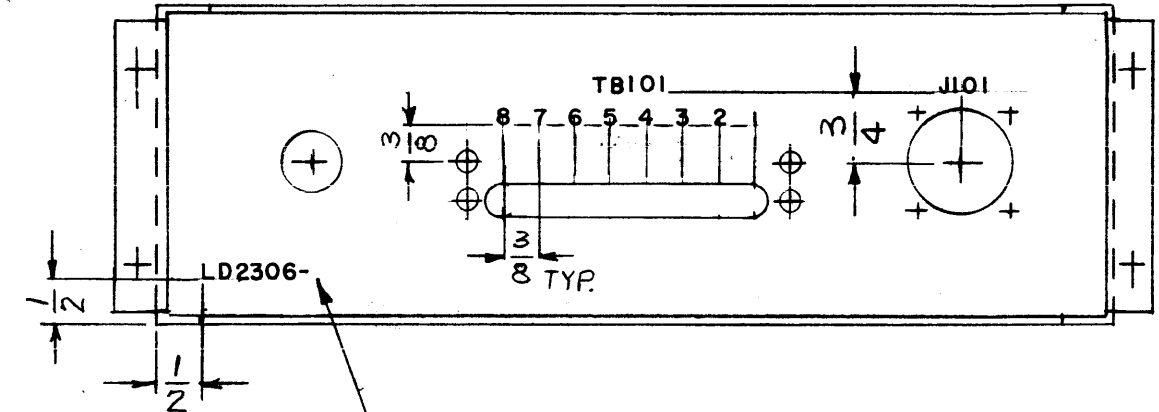


REVISIONS						
ZONE	LTR	DESCRIPTION	DATE	E.M.N.NO	DRAFT	CHKD APPD
	XI	REV & UPDATED	3/11/68	+	HG	[Signature]
	Ø	ORIG. RELEASE FOR PROD	2-13-69	Ø	RG	[Signature]
	A	REVERSE R109 & R110	5/27/69	19466	GE	[Signature] FB

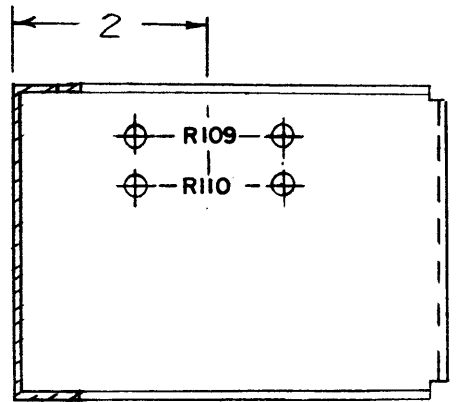


OUTSIDE, REAR



INSIDE, REAR

MARK TMC P/N
 1/8 HIGH GOTHIC
 W/LATEST REV.
 LETTER



SECTION - A-A

MARKING PROCESS: AS PER TMC SPECIFICATION S-727
 LETTERING: 1/8 HIGH BLACK GOTHIC, LOCATED AS SHOWN

1	AX5031 (KIT-32)	
QTY / UNIT	MODEL USED ON	ASS'Y NO.
	APPLICATION	
	CODE	S401-451

NOTICE TO PERSONS RECEIVING THIS DRAWING
 THE TECHNICAL MATERIEL CORPORATION claims proprietary right in the material disclosed hereon. This drawing is issued in confidence for engineering information only and may not be reproduced or used to manufacture anything shown hereon without permission from THE TECHNICAL MATERIEL CORPORATION to the user. This drawing is loaned for mutual assistance and is subject to recall at any time.

REF: MS5366

UNLESS OTHERWISE SPECIFIED DIMENSIONS ARE IN INCHES AND INCLUDE CHEMICALLY APPLIED OR PLATED FINISHES	
DECIMALS .X ± .05 .XX ± .01 .XXX ± .005	FRACTIONS 1/64 ANGLES 0° .30'
MATERIAL	FINISH

REQ'D	ITEM	PART NUMBER	DESCRIPTION	SYM.
		F. BUDETTI	LIST OF MATERIAL	
FINAL APPROVAL		DATE	THE TECHNICAL MATERIEL CORP. MAMARONECK, NEW YORK	
MECH. DES.		DATE	MARKING, CHASSIS, WRAPAROUND	
ELECT. DES.		DATE	SIZE B	
CHECKED		DATE 3/11/68	CODE IDENT. NO. 82679	
DRAWN		DATE 3/11/68	DWG NO. LD2306	
			ISSUE Δ	
SCALE 1/2		SHEET		OF