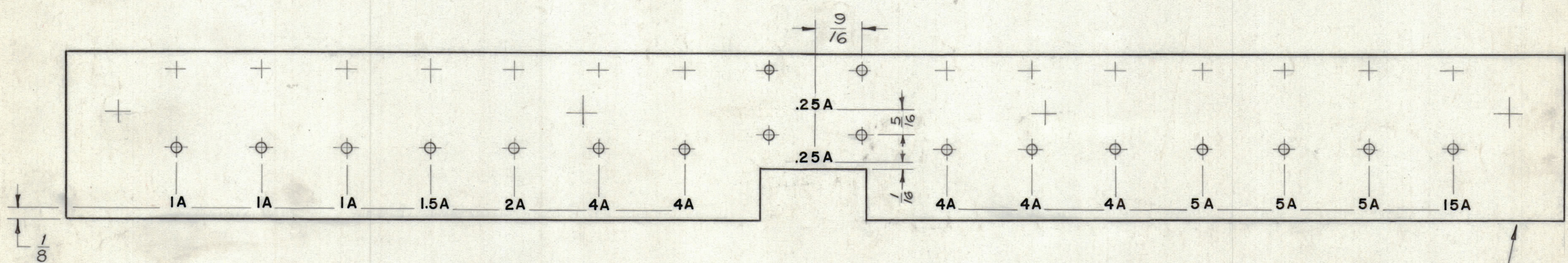


REVISIONS						
ZONE	LTR	DESCRIPTION	DATE	E.M.N.NO	DRAFT	CHKD
	X	EXPERIMENTAL RELEASE	2/1/68	-#	Emp	W
	Ø	ORIGINAL RELEASE FOR PRODUCTION	4-1-68	Ø	HE	HE



MARK TMC P/N (LD2294)  $\frac{1}{8}$  HIGH  
 GOTHIC W/LATEST REV.  
 LETTER ON REAR.

UNLESS OTHERWISE SPECIFIED:  
 - ENGRAVING;  $\frac{1}{8}$  HIGH WHITE FILLED GOTHIC.  
 ACCORDING TO TMC SPEC S 666.

HEIGHT OF LETTER	DEPTH OF STROKE	WIDTH OF STROKE
$\frac{1}{8}$	.010	.020

REF MS 5159

1	BCT-10KA	
QTY / UNIT	MODEL USED ON	ASS'Y NO.
APPLICATION		
CODE	S401-451	
A		

NOTICE TO PERSONS RECEIVING THIS DRAWING  
 THE TECHNICAL MATERIEL CORPORATION claims proprietary right in the material disclosed hereon. This drawing is issued in confidence for engineering information only and may not be reproduced or used to manufacture anything shown hereon without permission from THE TECHNICAL MATERIEL CORPORATION to the user. This drawing is loaned for mutual assistance and is subject to recall at any time.

UNLESS OTHERWISE SPECIFIED DIMENSIONS ARE IN INCHES AND INCLUDE CHEMICALLY APPLIED OR PLATED FINISHES

TOLERANCES ON  
 DECIMALS .X ± .05  
 .XX ± .01  
 .XXX ± .005  
 FRACTIONS ± 1/64  
 ANGLES ± 0° -30'

QTY. REQ.	ITEM	PART NO.	DESCRIPTION	SYMBOL
F. BUDETTI LIST OF MATERIAL				
FINAL APPROVAL		DATE	THE TECHNICAL MATERIEL CORP.	
MECH. DES.		DATE	MAMARONECK, NEW YORK	
ELECT. DES.		DATE	MARKING PLATE MTG. FUSE	
CHECKED		DATE		
DRAWN		DATE		
SIZE	CODE IDENT. NO.	DWG NO.	ISSUE	
C	82679	LD 2294	Ø	
SCALE 1:1			SHEET OF	