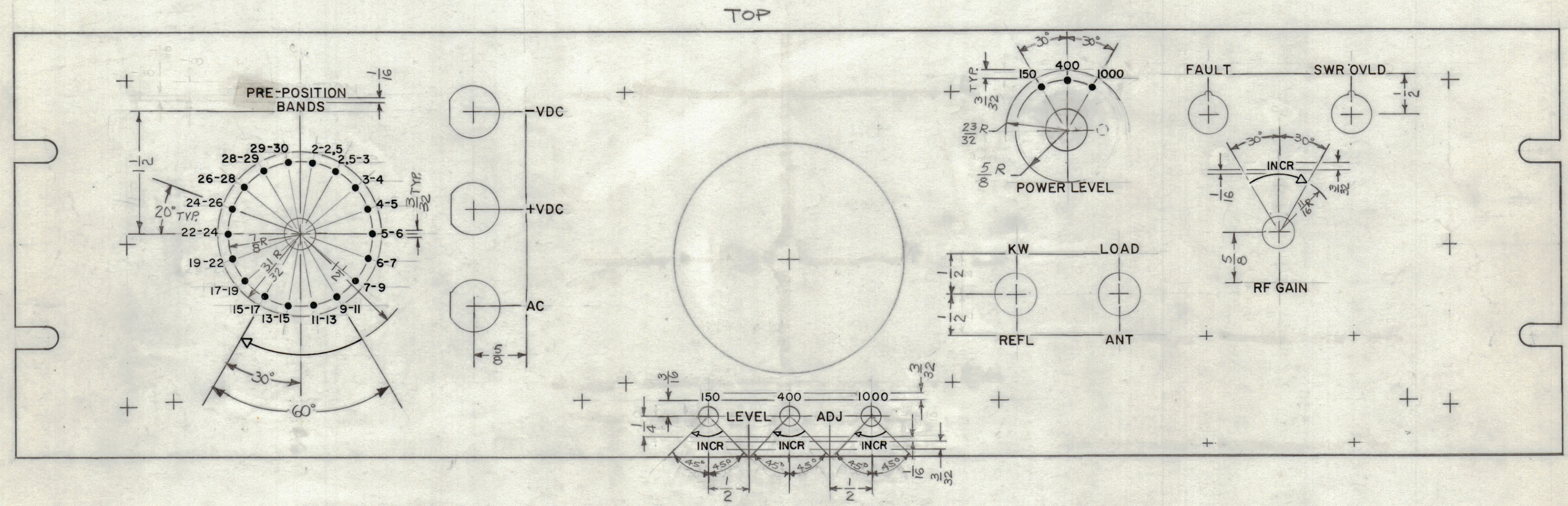


REVISIONS						
ZONE	LTR	DESCRIPTION	DATE	E.M.N.NO	DRAFT	CHKD APPD
	X	EXP. RELEASE	1.11.68		A.P.	<i>[Signature]</i> <i>[Signature]</i>
	Ø	ORIGINAL RELEASE FOR PRODUCTION	5.7.68	Ø	<i>[Signature]</i>	<i>[Signature]</i>



HEIGHT OF LETTER	DEPTH OF STROKE	WIDTH OF STROKE
3/32	.010	.015
1/8	.010	.020
3/16	.010	.025
LINES	.010	.015
DOTS	.010	1/16 DIA.
ARROWS	.010	.015

- UNLESS OTHERWISE SPECIFIED:
- 1- ALL ENGRAVING TO BE 1/8 HIGH GOTHIC AS PER TMC SPEC. S566.
  - 2- ALL ENGRAVING TO BE WHITE FILLED.
  - 3- ALL LETTER GROUPS TO BE CENTERED ON HOLES.
  - 4- ALL ARROWHEADS WHITE OUTLINE FILL.

QTY. REQ.	ITEM	PART NO.	DESCRIPTION	SYMBOL
REF: MS 5310				
BUDETTI LIST OF MATERIAL				
FINAL APPROVAL <i>[Signature]</i> DATE 1-11-68			<b>THE TECHNICAL MATERIEL CORP.</b> MAMARONECK, NEW YORK	
MECH. DES. A. PETROCCA DATE 5-7-68				
ELECT. DES. <i>[Signature]</i> DATE 5-7-68			MARKING, PANEL, FRONT (FRONT VIEW SHOWN)	
CHECKED <i>[Signature]</i> DATE 5-7-68				
DRAWN A. PETROCCA DATE 1-11-68				
MATERIAL			SIZE C	ISSUE Ø
FINISH			CODE IDENT. NO. 82679	DWG NO. LD 2286
			SCALE DO NOT SCALE	SHEET 1 OF 2

1	SWCD-3K	
QTY / UNIT	MODEL USED ON	ASS'Y NO.
APPLICATION		
	CODE A	S 401-451
NOTICE TO PERSONS RECEIVING THIS DRAWING		
THE TECHNICAL MATERIEL CORPORATION claims proprietary right in the material disclosed hereon. This drawing is issued in confidence for engineering information only and may not be reproduced or used to manufacture anything shown hereon without permission from THE TECHNICAL MATERIEL CORPORATION to the user. This drawing is loaned for mutual assistance and is subject to recall at any time.		