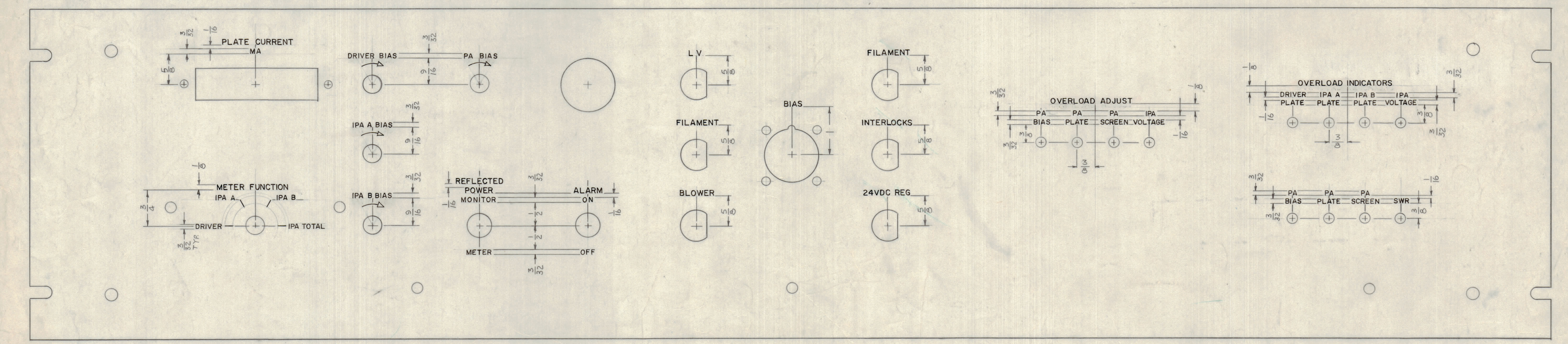
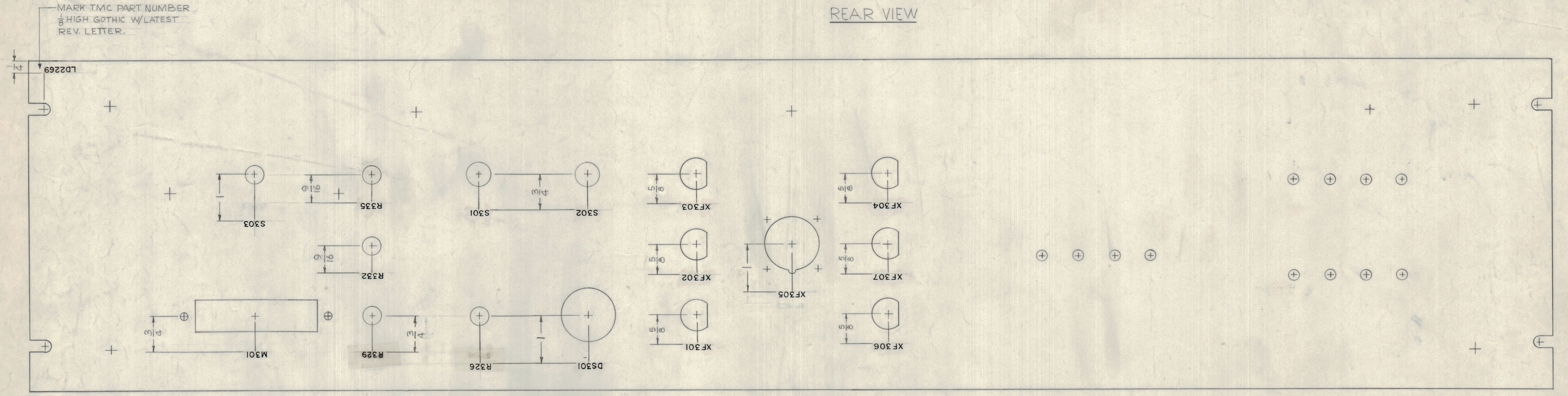


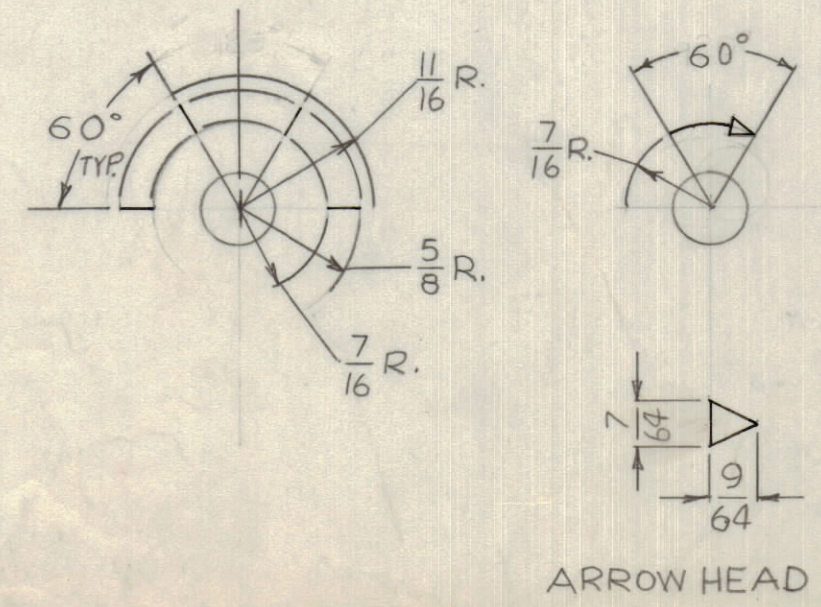
MARKING PROCESS: AS PER TMC SPECIFICATION S-727.  
 LETTERING: 1/8 HIGH BLACK GOTHIC, LOCATED AS SHOWN.

REVISIONS						
ZONE	LTR	DESCRIPTION	DATE	E.M.N.NO	DRAFT	CHKD APPD
	X	EXP. RELEASE	12-22-67	+	H.S.	H.S.
	Ø	ORIGINAL RELEASE FOR PRODUCTION		Ø	H.S.	H.S.

REAR VIEW



- UNLESS OTHERWISE SPECIFIED:
1. ALL ENGRAVING TO BE ACCORDING TO TMC SPEC S566.
  2. ALL ENGRAVING TO BE 1/8 HIGH GOTHIC WHITE FILLED
  3. ALL LINES TO BE WHITE FILLED.
  4. ARROWHEADS TO BE WHITE OUTLINE FILLED.
  5. ALL LETTER GROUPS TO BE CENTERED ON HOLES OR CUTOUTS.



LETTER HEIGHT	DEPTH OF STROKE	WIDTH OF STROKE
1/8	.010	.020
3/32	.010	.015
LINES	.010	.015

FRONT VIEW

1	BCT-10KA	
QTY / UNIT	MODEL USED ON	ASS'Y NO.
APPLICATION		
CODE	A 5401-451	
NOTICE TO PERSONS RECEIVING THIS DRAWING		
THE TECHNICAL MATERIEL CORPORATION claims proprietary right in the material disclosed hereon. This drawing is issued in confidence for engineering information only and may not be reproduced or used to manufacture anything shown hereon without permission from THE TECHNICAL MATERIEL CORPORATION to the user. This drawing is loaned for mutual assistance and is subject to recall at any time.		

REF: MS 5246	QTY. REQ.	ITEM	PART NO.	DESCRIPTION	SYMBOL
				LIST OF MATERIAL REF: SK 3290-LD1006	
		FINAL APPROVAL	F. BUDETTI	DATE	4-1-68
		MECH. DES.		DATE	4-1-68
		ELECT. DES.		DATE	4-1-68
		CHECKED		DATE	4-1-68
		DRAWN		DATE	12-22-67
TOLERANCES ON				THE TECHNICAL MATERIEL CORP. MAMARONECK, NEW YORK	
DECIMALS .X ± .05				MARKING, FRONT PANEL	
FRACTIONS ± 1/64				IPA DRAWER	
ANGLES ± 0°-30'				SIZE CODE IDENT. NO. DWG NO.	
MATERIAL				D 82679 LD2269	
FINISH				SCALE 1:1 SHEET OF	