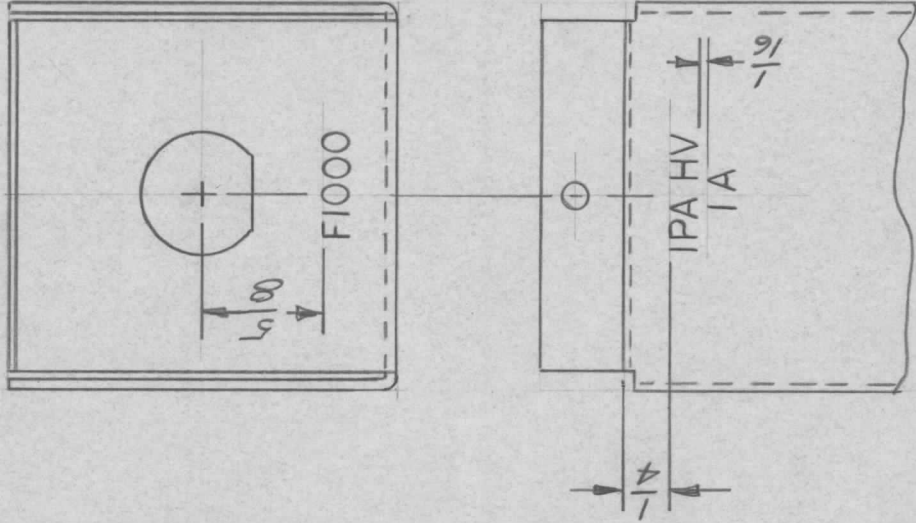


APPLICATION			REVISIONS						
QTY	MODEL USED ON	ASS'Y NO.	LTR	DESCRIPTION	DATE	E.M.N.NO	DRAFT	CHKD	APPD
1	GPT10KLF		X	EXP. RELEASE	9-26-67		B.M.		
			Ø	ORIGINAL RELEASE	7/15/69		CW		



MARK TMC P/N LD2252-
 1/8 HIGH GOTHIC
 W/ LATEST REV.
 LETTER.

MARKING PROCESS: AS PER TMC SPECIFICATION S-727.
 LETTERING: 1/8 HIGH BLACK GOTHIC, LOCATED AS SHOWN.

REF: MS4900

UNLESS OTHERWISE SPECIFIED DIMENSIONS ARE IN INCHES AND INCLUDE CHEMICALLY APPLIED OR PLATED FINISHES	REQ'D ITEM	PART NUMBER	DESCRIPTION	SYM.
DECIMALS .X ± .05 .XX ± .01 .XXX ± .005			LIST OF MATERIAL	
FRACTIONS 1/64			THE TECHNICAL MATERIEL CORP.	
TOLS. ANGLES 0°-30'			MAMARONECK, NEW YORK	
MATERIAL			MARKING, BOX, MTG FUSE	
FINISH				
S401-451				

FINAL APPROVAL	DATE
<i>[Signature]</i>	7/15/69
MECH. DES.	DATE
<i>B.N.</i>	
ELECT. DES.	DATE
CHECKED	DATE
DRAWN	DATE
<i>B.M.</i>	26 SEP 67

NOTICE TO PERSONS RECEIVING THIS DRAWING	
THE TECHNICAL MATERIEL CORPORATION claims proprietary right in the material disclosed hereon. This drawing is issued in confidence for engineering information only and may not be reproduced or used to manufacture anything shown hereon without permission from THE TECHNICAL MATERIEL CORPORATION to the user. This drawing is loaned for mutual assistance and is subject to recall at any time.	
SIZE	CODE IDENT. NO. DWG NO.
A	82679 LD2252
SCALE	SHEET OF
ISSUE	Ø