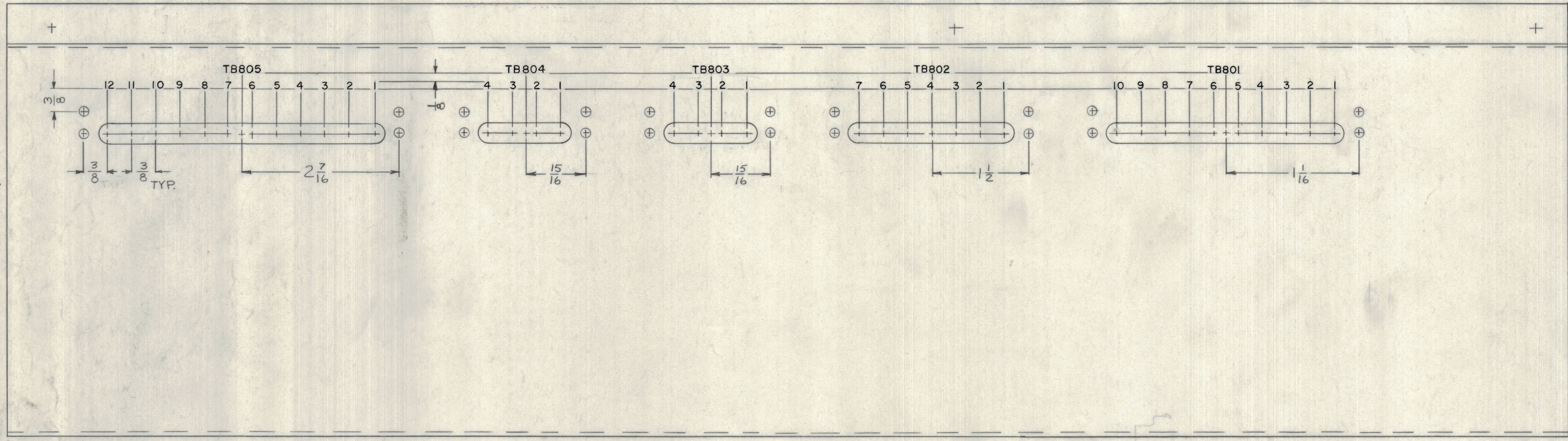
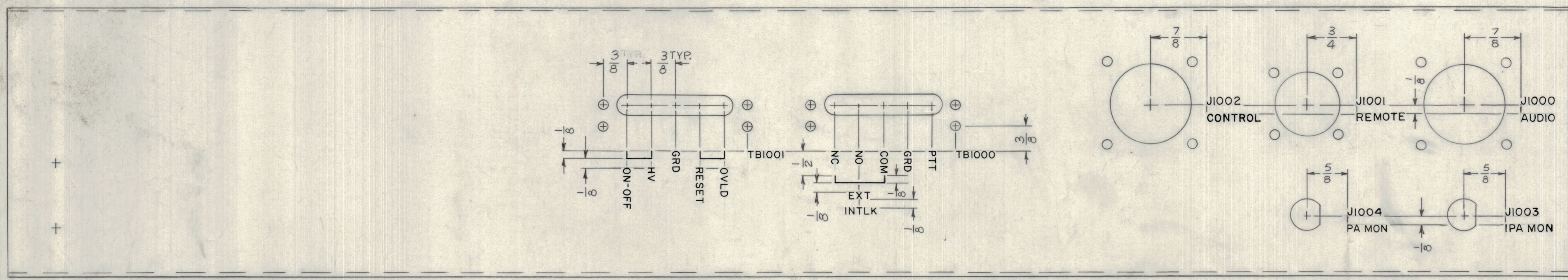


REVISIONS						
ZONE	LTR	DESCRIPTION	DATE	E.M.N.NO	DRAFT	CHKD APPD
X		EXPERIMENTAL RELEASE	1-12-68	J		
XI		J1002 CONTROL (CORRECTED)	4-1-68	XG		
0		ORIGINAL RELEASE FOR PRODUCTION	4-1-68	0		

REAR OUTSIDE VIEW



MARK THE PANEL LD2248 1/8" HIGH
 WITH THE WIDEST TYPE LETTER
 (ON PLATE)



BOTTOM OUTSIDE VIEW

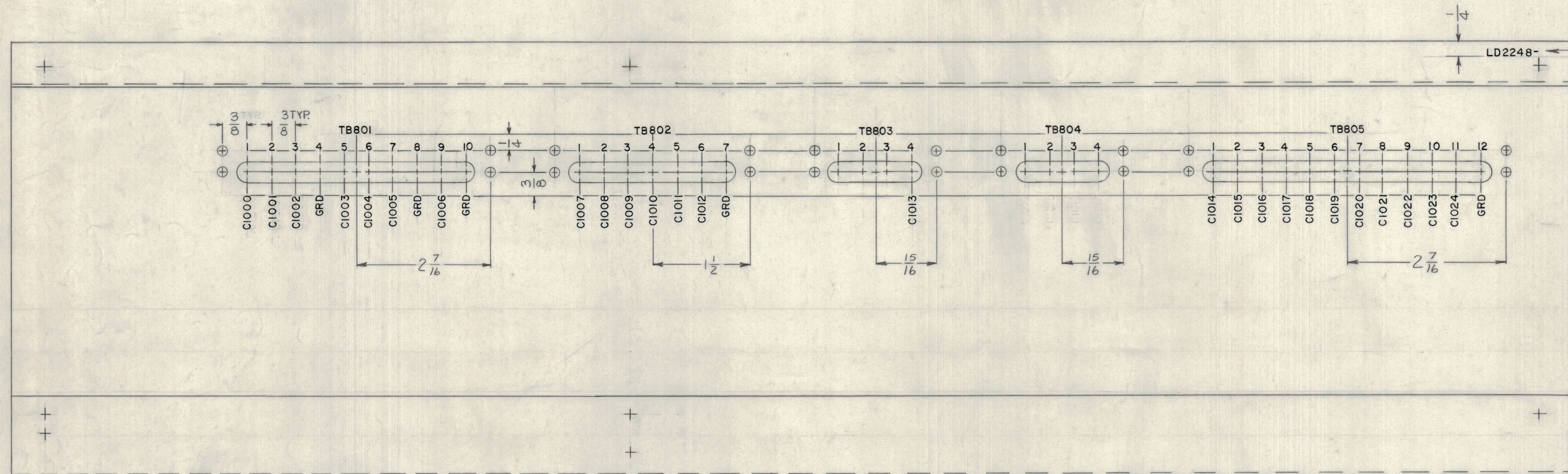
REF: MS5169

1	BCT-10KA	
QTY / UNIT	MODEL USED ON	ASS'Y NO.
APPLICATION		
CODE	S401-451	
NOTICE TO PERSONS RECEIVING THIS DRAWING		
<small>THE TECHNICAL MATERIEL CORPORATION claims proprietary right in the material disclosed hereon. This drawing is issued in confidence for engineering information only and may not be reproduced or used to manufacture anything shown hereon without permission from THE TECHNICAL MATERIEL CORPORATION to the user. This drawing is loaned for mutual assistance and is subject to recall at any time.</small>		

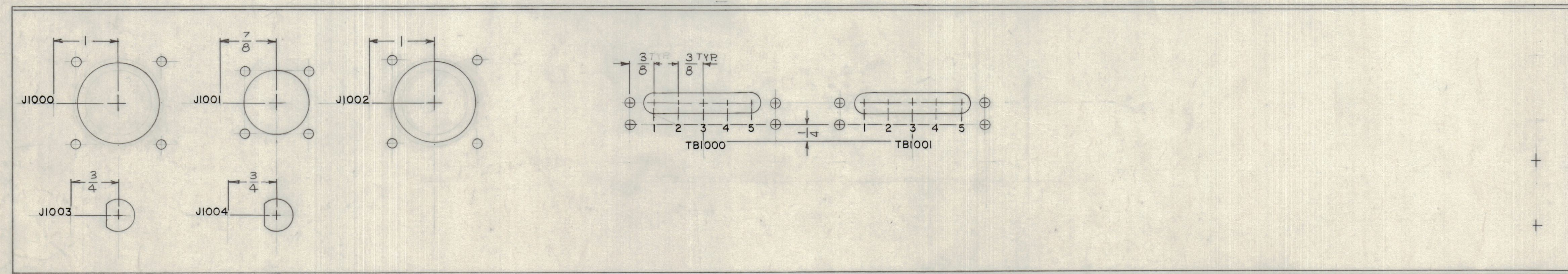
QTY. REQ.	ITEM	PART NO.	DESCRIPTION	SYMBOL
	F. BUDETTI			
	LIST OF MATERIAL			SK3290-LD1007
	THE TECHNICAL MATERIEL CORP.			
	MAMARONECK, NEW YORK			
	MARKING, INTERFACE PANEL			
	SIZE	CODE IDENT. NO.	DWG NO.	ISSUE
	D	82679	LD2248	0
	SCALE	1:1	SHEET	OF 2

REVISIONS						
ZONE	LTR	DESCRIPTION	DATE	E.M.N.NO	DRAFT	CHKD
	X2	REDRAWN	1-11-68	+	H2	
	Ø	ORIGINAL RELEASE FOR PRODUCTION	4-1-68	Ø	HG	

REAR INSIDE VIEW



MARK TMC P/N $\frac{1}{8}$ HIGH GOTHIC
W/LATEST REV. LETTER



BOTTOM INSIDE VIEW

MARKING PROCESS: AS PER TMC SPECIFICATION S-727.
LETTERING: 1/8 HIGH BLACK GOTHIC, LOCATED AS SHOWN.

1	BCT-10KA	
QTY / UNIT	MODEL USED ON	ASS'Y NO.
APPLICATION		
	CODE A	5401-451
NOTICE TO PERSONS RECEIVING THIS DRAWING		
THE TECHNICAL MATERIEL CORPORATION claims proprietary right in the material disclosed hereon. This drawing is issued in confidence for engineering information only and may not be reproduced or used to manufacture anything shown hereon without permission from THE TECHNICAL MATERIEL CORPORATION to the user. This drawing is loaned for mutual assistance and is subject to recall at any time.		

UNLESS OTHERWISE SPECIFIED DIMENSIONS ARE IN INCHES AND INCLUDE CHEMICALLY APPLIED OR PLATED FINISHES	
TOLERANCES ON	
DECIMALS	FRACTIONS
.X ± .05	± 1/64
.XX ± .01	ANGLES
.XXX ± .005	± 0° -30'

REF: MS5169		QTY. REQ.	ITEM	PART NO.	DESCRIPTION	SYMBOL
			F. BUDETTI		LIST OF MATERIAL	SK 3290-LD1007
FINAL APPROVAL		DATE				
<i>[Signature]</i>		4-1-68				
MECH. DES.		DATE				
<i>[Signature]</i>		4-1-68				
ELECT. DES.		DATE				
<i>[Signature]</i>		4-1-68				
CHECKED		DATE				
<i>[Signature]</i>		4-1-68				
DRAWN		DATE				
<i>[Signature]</i>		1-11-68				
MATERIAL		SIZE	CODE IDENT. NO.	DWG NO.	ISSUE	
FINISH		D	82679	LD 2248	Ø	
		SCALE	1:1			SHEET 2 OF 2

THE TECHNICAL MATERIEL CORP.
MAMARONECK, NEW YORK

MARKING INTERFACE PANEL