

5

4

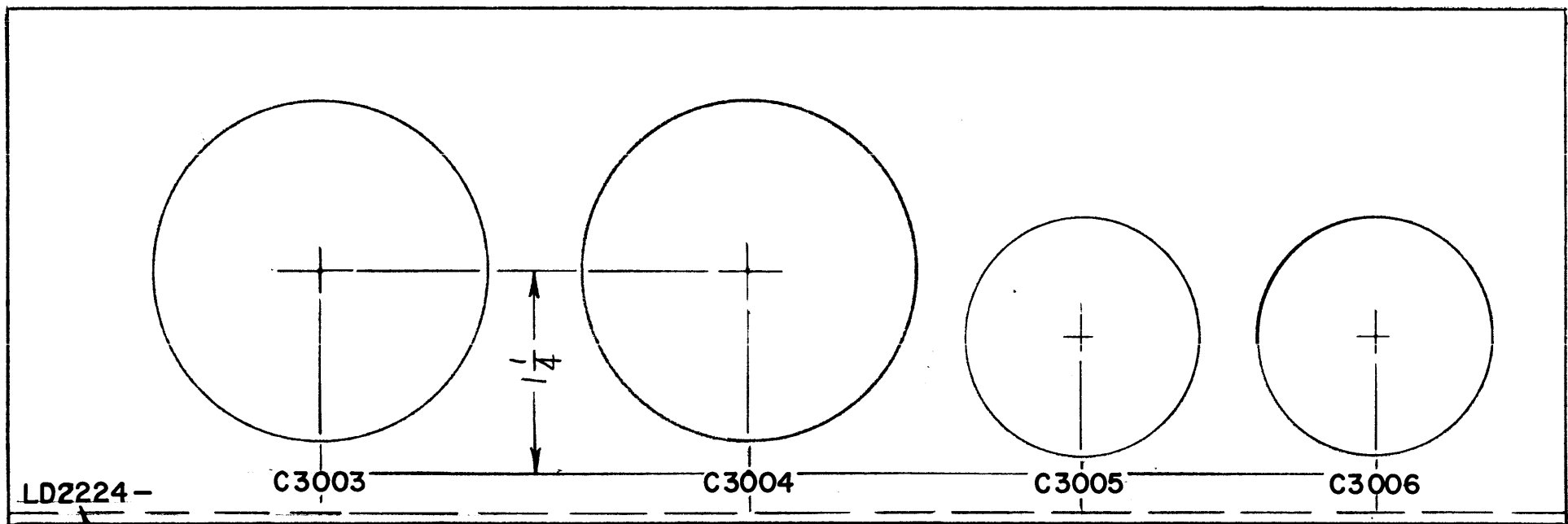
3

2

1

MARKING PROCESS: AS PER TMC SPECIFICATION S-727.
 LETTERING: 1/8 HIGH BLACK GOTHIC, LOCATED AS SHOWN.

REVISIONS						
ZONE	LTR	DESCRIPTION	DATE	E.M.N.NO	DRAFT	CHKD APPD
	X	EXPERIMENTAL RELEASE	2-24-67	-	HCB	BB
	Ø	ORIG. RELEASE FOR PROD		Ø	R.G.	



OBSOLETE
 11-14-67
 REPLACED BY
 MS5229 NO
 LD REQ'D

MARK TMC PT. NO.
 W/LATEST REV. LETTER.

REF: MS5229-

REQ'D	ITEM	PART NUMBER	DESCRIPTION	SYM.
F. EATON LIST OF MATERIAL				
THE TECHNICAL MATERIEL CORP. MAMARONECK, NEW YORK				
MARKING, BRACKET PC CARD & CAP. MTG.				
SIZE	CODE IDENT. NO.	DWG NO.	ISSUE	
B	82679	LD2224	Ø	
SCALE			SHEET	OF

I	RTIH-3	ASS'Y NO.
QTY / UNIT	MODEL USED ON	
APPLICATION		
	CODE	

UNLESS OTHERWISE SPECIFIED
 DIMENSIONS ARE IN INCHES
 AND INCLUDE CHEMICALLY APPLIED
 OR PLATED FINISHES

DECIMALS	FRACTIONS
.X ± .05	1/64
.XX ± .01	TOLS. ANGLES
.XXX ± .005	0° .30'

MATERIAL

FINISH

FINAL APPROVAL
 MECH. DES.
 ELECT. DES.
 CHECKED
 DRAWN H. AUSTIN
 DATE 2-24-67

NOTICE TO PERSONS RECEIVING THIS DRAWING
 THE TECHNICAL MATERIEL CORPORATION claims proprietary right in the material disclosed hereon. This drawing is issued in confidence for engineering information only and may not be reproduced or used to manufacture anything shown hereon without permission from THE TECHNICAL MATERIEL CORPORATION to the user. This drawing is loaned for mutual assistance and is subject to recall at any time.

5

4

3

2

1