

4

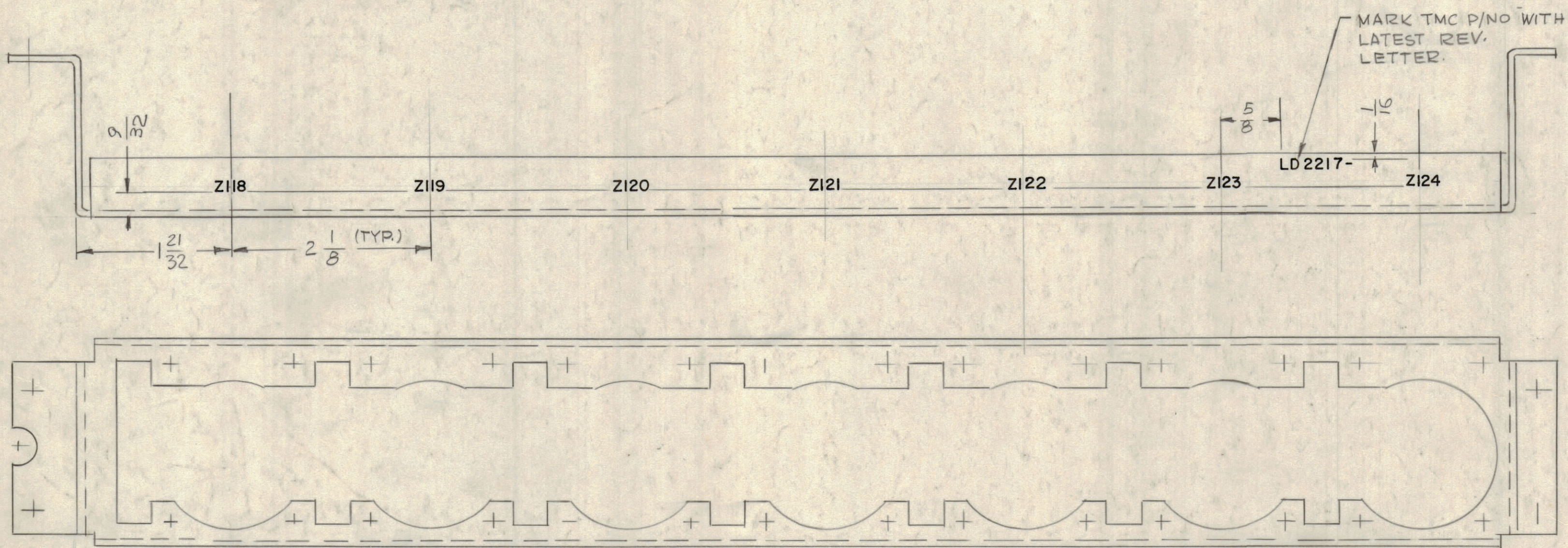
3

2

1

FOR AUTOMATION

REVISIONS						
ZONE	LTR	DESCRIPTION	DATE	E.M.N.NO	DRAFT	CHKD APPD
	X	EXP. RELEASE	2-2-67		GDL	
	XI	REMOVED HFSR-4	11-10-67		NY	
	Ø	ORIGINAL RELEASE FOR PRODUCTION	4-11-69		GDL	



MARKING PROCESS: AS PER TMC SPECIFICATION S-727.
 LETTERING: 1/8 HIGH BLACK GOTHIC, LOCATED AS SHOWN.

REF: MS 6060

QTY / UNIT	MODEL USED ON	ASS'Y NO.
1	VOX-7	BMA 114
1	MMX-()	BMA 105
APPLICATION		
S401-451	CODE A	

UNLESS OTHERWISE SPECIFIED DIMENSIONS ARE IN INCHES AND INCLUDE CHEMICALLY APPLIED OR PLATED FINISHES

TOLERANCES ON

DECIMALS	FRACTIONS
.X ± .05	± 1/64
.XX ± .01	ANGLES
.XXX ± .005	± 0° -30'

QTY. REQ.	ITEM	PART NO.	DESCRIPTION	SYMBOL
	O. POSE LIST OF MATERIAL			
	THE TECHNICAL MATERIEL CORP. MAMARONECK, NEW YORK			
	MARKING, BRACKET, AUTOMATED SWT.			
			SIZE CODE IDENT.NO. DWG NO.	ISSUE
			C 82679 LD 2217	Ø
			SCALE 1:1	SHEET OF

NOTICE TO PERSONS RECEIVING THIS DRAWING

THE TECHNICAL MATERIEL CORPORATION claims proprietary right in the material disclosed hereon. This drawing is issued in confidence for engineering information only and may not be reproduced or used to manufacture anything shown hereon without permission from THE TECHNICAL MATERIEL CORPORATION to the user. This drawing is loaned for mutual assistance and is subject to recall at any time.

4

3

2

1

LD 2217

Ø

A