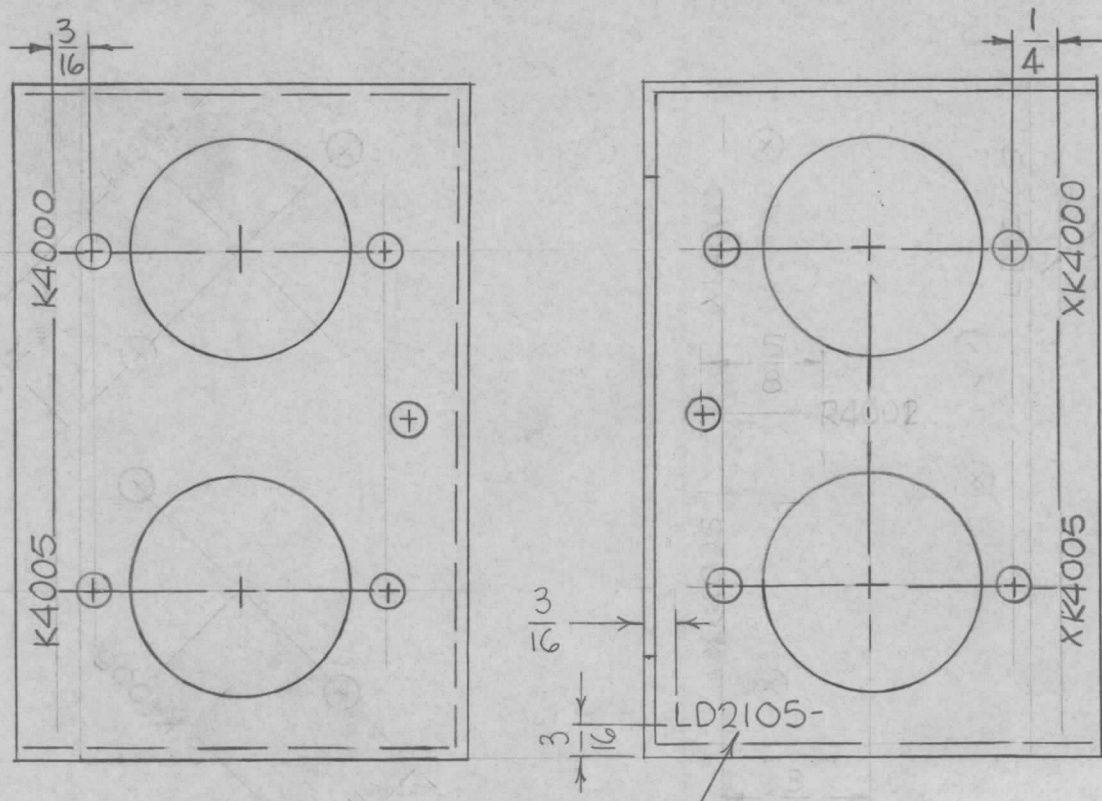


REQ. PER UNIT 1	USED ON		LD2105	⊙
	MODEL TCP-2	ASS'Y. NO.		

MARKING PROCESS: AS PER TMC SPECIFICATION S-727.

LETTERING: 1/8 HIGH BLACK GOTHIC, LOCATED AS SHOWN



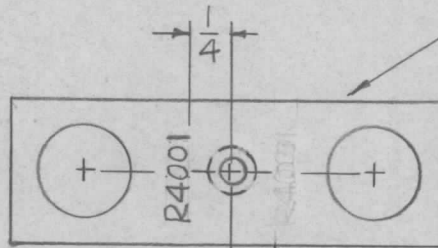
MARK TMC PART NO. 1/8 HIGH GOTHIC W/ LATEST REV LETTER

MARK TMC PART NO. 1/8 HIGH GOTHIC W/LATEST REVISION LETTER

⊙	ORIGINAL RELEASE FOR PRODUCTION	2.1.66	WHD			
X3	R4002 DELETED	11-29-66	X3	Ray		
X2	R4002 WAS R4001	9-1-66	X2	Ray		
X1	MARKING, RELOCATED	8-2-66	X1			
X	EXP. RELEASE	6-16-66	X			
SYM	DESCRIPTION	DATE	CH. NO.	DRAFTS	CHECKER	ENG. APP.
UNLESS OTHERWISE SPECIFIED DIMENSIONS ARE IN INCHES AND INCLUDE CHEMICALLY APPLIED OR PLATED FINISHES		SCALE	1:1			
DECIMALS .X ± .05 .XX ± .01 .XXX ± .005	TOLERANCES	FRACTIONS ± 1/64 ANGLES ± 0° 30'	CODE	A		

REF: MS4999-		REQ. ITEM	PART NO.	F. BUDETTI	DESCRIPTION	SYMBOL
				THE TECHNICAL MATERIEL CORP. MAMARONECK, NEW YORK		
STOCK SIZE				MARKING, BRACKET, MTG. RELAY AS PER TMC SPEC. S-727		
MATERIAL						
TYPE & TEMPER		HEAT TREAT. SPEC.	DRAWN	CHECKED	FINAL APPROVAL	
FINISH & SPEC. NO.		ELEC. DES. APP.	MECH. DES. APP.	LD2105		⊙

REQ. PER UNIT	USED ON			LD2107	Q
	MODEL	ASS'Y. NO.	DATE		
1	TCP-1		4-22-66		
1	TCP-2		4-23-66		



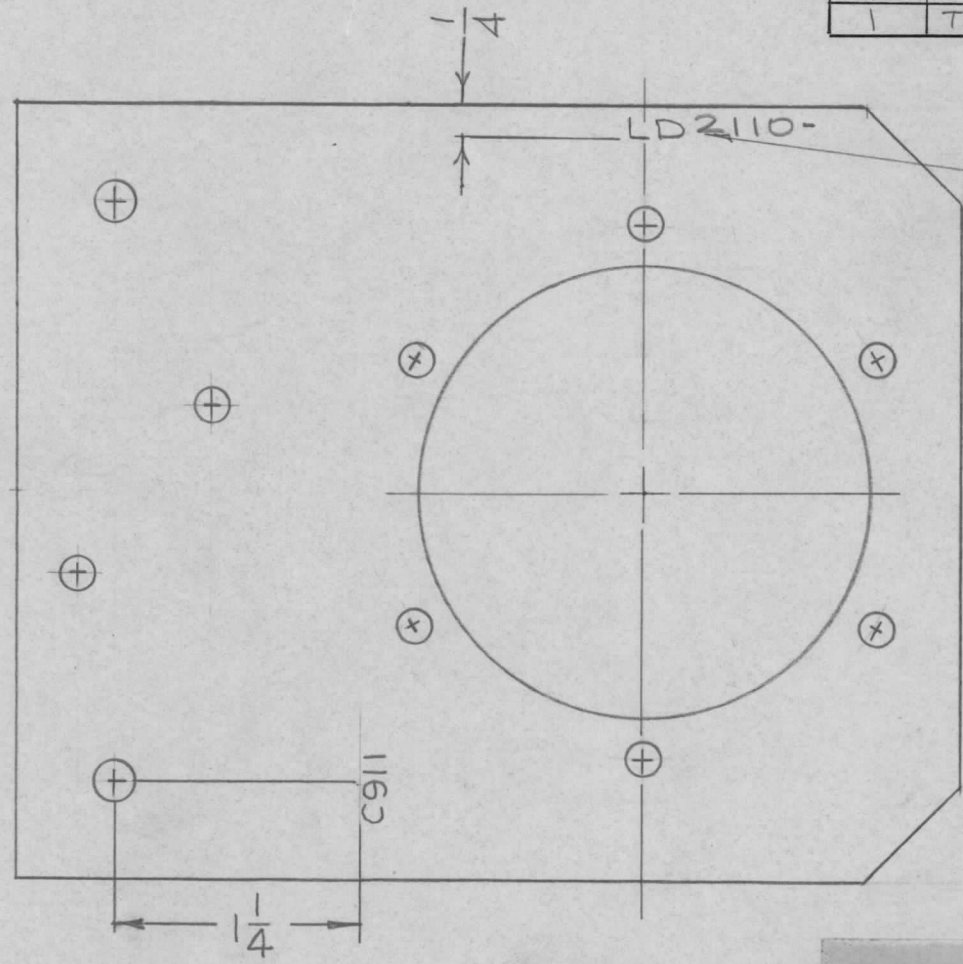
MARK TMC P/N (LD2107)
 $\frac{1}{8}$ HIGH GOTHIC
 W/LATEST REV
 LETTER (ON REAR.)

MARKING PROCESS:
 AS PER TMC SPEC.
 S-727.
 LETTERING $\frac{1}{8}$ HIGH
 BLACK GOTHIC

REF: MS 5001-

SYM	DESCRIPTION	DATE	CH. NO.	DRAFTS	CHECKER	ENG. APP.	REQ. ITEM	PART NO.	F. BUDETTI	DESCRIPTION	SYMBOL	
Q	ORIGINAL RELEASE FOR PRODUCTION	12.1.66		WHO								
X2	TCP-2 ADDED	11-23-66								THE TECHNICAL MATERIEL CORP. MAMARONECK, NEW YORK MARKING BRACKET MTG. TERMINAL AS PER TMC SPEC. S.727		
X1	MARKING WAS ON OPP. SIDE	9-8-66	X1									
X	EXP. RELEASE	6-28-66	X									
UNLESS OTHERWISE SPECIFIED DIMENSIONS ARE IN INCHES AND INCLUDE CHEMICALLY APPLIED OR PLATED FINISHES							SCALE 1:1					
DECIMALS .X ± .05 .XX ± .01 .XXX ± .005							TOLERANCES		FRACTIONS ± 1/64 ANGLES ± 0° 30'		CODE A	
							TYPE & TEMPER HEAT TREAT. SPEC.		DRAWN CHECKED		FINAL APPROVAL	
							FINISH & SPEC. NO.		ELEC. DES. APP. MECH. DES. APP.		LD2107 Q	

REQ. PER UNIT	USED ON			LD2110	Ø
	MODEL	ASS'Y. NO.	DATE		
1	TSTE-10K	AX580	7-11-66		



MARK TMC P/N
1/8 HIGH GOTHIC
W/LATEST REV.
LETTER.

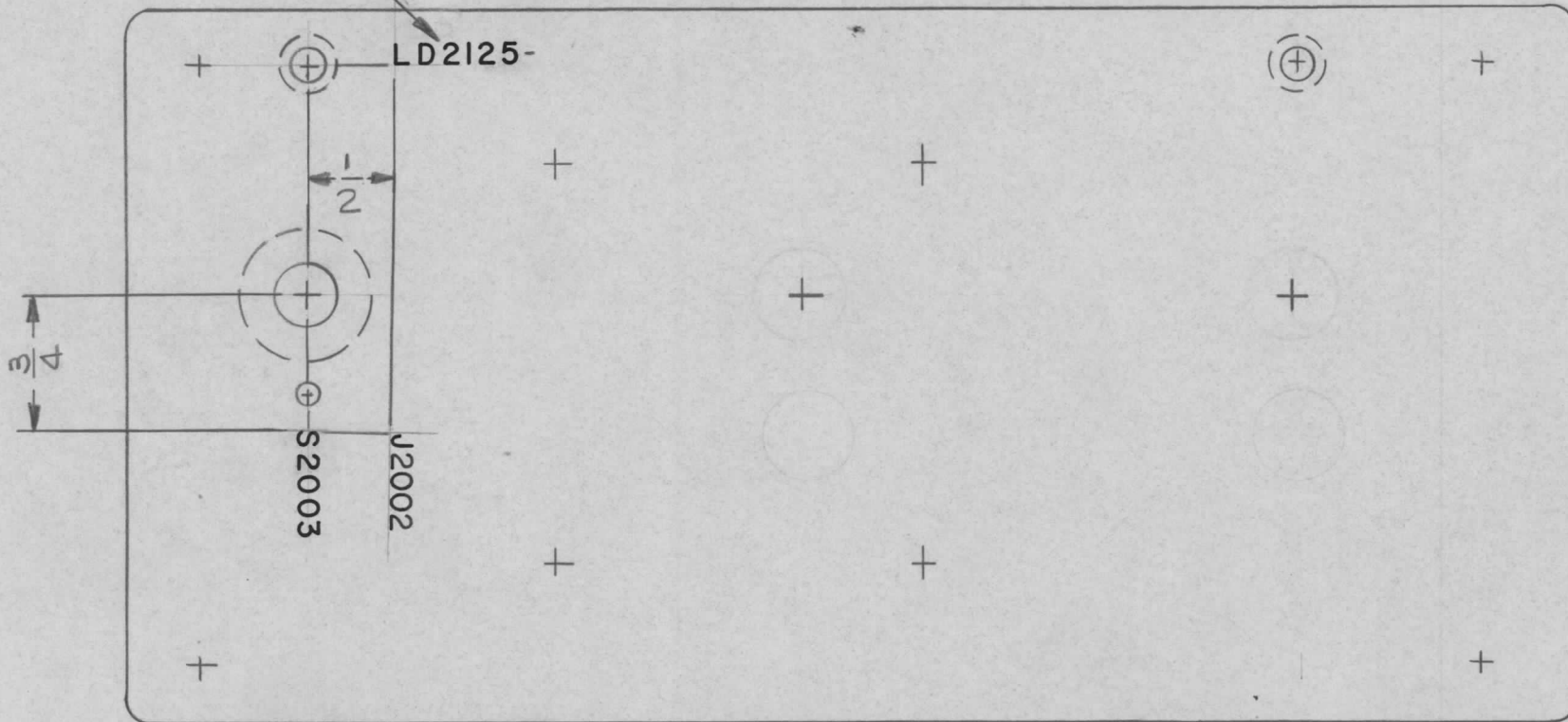
MARKING PROCESS: AS PER TMC SPECIFICATION S-727.
LETTERING: 1/8 HIGH BLACK GOTHIC, LOCATED AS SHOWN.

REF: PX 625

SYM	DESCRIPTION	DATE	CH. NO.	DRAFTS	CHECKER	ENG. APP.	REQ. ITEM	PART NO.	F. BUDETTI DESCRIPTION	SYMBOL			
Ø	ORIGINAL RELEASE FOR PRODUCTION	12/2/66	Ø	CV					THE TECHNICAL MATERIEL CORP. MAMARONECK, NEW YORK				
X1	ADD 1/4 DIM TO TMC PT. NO.	11/29/66	VM	Jc				STOCK SIZE					
X	EXP. RELEASE	7-11-66	X	<i>[Signature]</i>	<i>[Signature]</i>			MATERIAL		MARKING, PLATE CAP. MTG. LOAD RES. AS PER TMC SPEC: S727			
UNLESS OTHERWISE SPECIFIED DIMENSIONS ARE IN INCHES AND INCLUDE CHEMICALLY APPLIED OR PLATED FINISHES							SCALE						
							1:1						
DECIMALS .X ± .05 .XX ± .01 .XXX ± .005							TOLERANCES		FRACTIONS ± 1/64 ANGLES ± 0° 30'		CODE		
							A						
							FINISH & SPEC. NO.	ELEC. DES. APP.	MECH. DES. APP.	LD2110 Ø			

MARK TMC PT. NO.
W/LATEST REV. LETTER

REQ. PER UNIT	USED ON			LD2125 Ø
	MODEL	ASS'Y. NO.	DATE	
1	TLAA-2.5K	BMA128	8-3-66	



LETTERING: 1/8 HIGH BLACK GOTHIC, LOCATED AS SHOWN.

REF: PM1314-

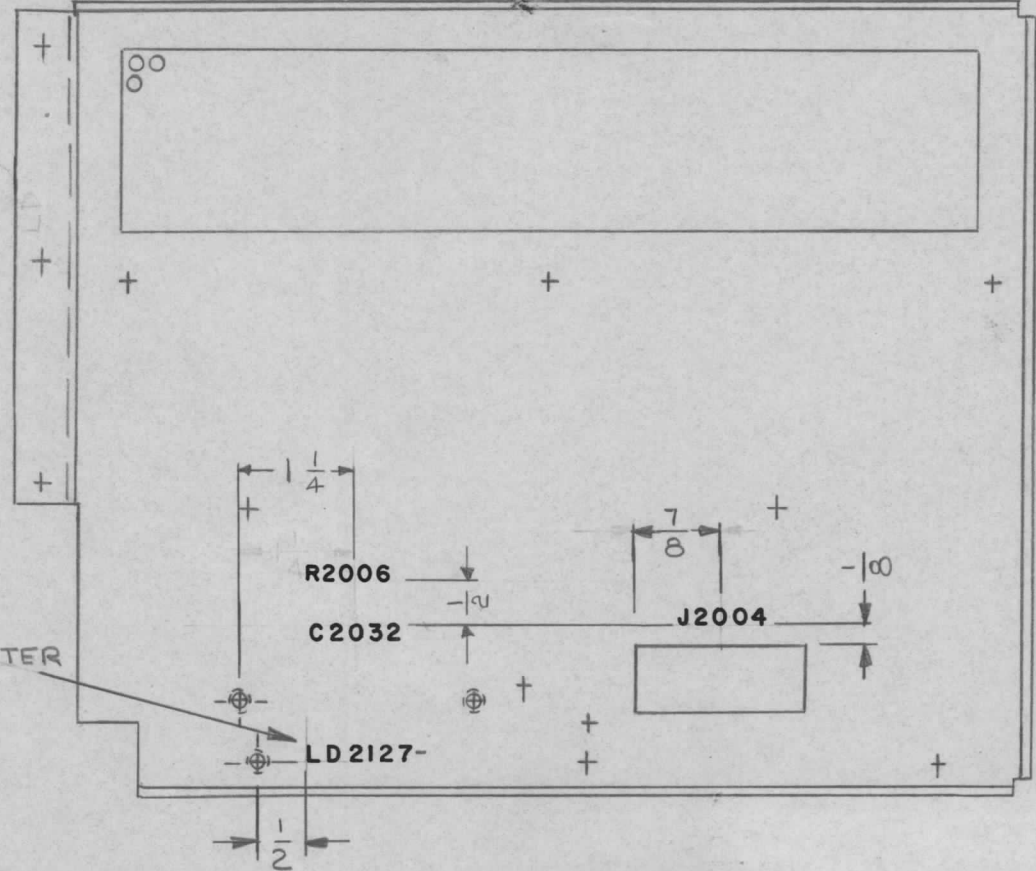
REQ. ITEM	PART NO.	F. BUDETTI	DESCRIPTION	SYMBOL							
Ø	ORIGINAL RELEASE FOR PRODUCTION	11-16-66	Ø RME								
X1	J2002 ADDED	11-15-66									
X	EXP. RELEASE	8-3-66	X HQ 203								
SYM	DESCRIPTION	DATE	CH. NO.	DRAFTS	CHECKER	ENG. APP.	MATERIAL	THE TECHNICAL MATERIEL CORP. MAMARONECK. NEW YORK			
UNLESS OTHERWISE SPECIFIED DIMENSIONS ARE IN INCHES AND INCLUDE CHEMICALLY APPLIED OR PLATED FINISHES							SCALE	MARKING, PANEL, SUB PLATE AS PER TMC SPEC. S-727			
							1:1				
DECIMALS .X ± .05 .XX ± .01 .XXX ± .005							TOLERANCES	DRAWN			
FRACTIONS ± 1/64 ANGLES ± 0° 30'							CODE	CHECKED			
							A	FINAL APPROVAL			
								LD2125 Ø			
								ELEC. DES. APP. MECH. DES. APP.			
								FINISH & SPEC. NO.			

MARKING PROCESS: AS PER TMC SPECIFICATION S-727.

LETTERING: 1/8 HIGH BLACK GOTHIC, LOCATED AS SHOWN.

REQ. PER UNIT	USED ON		
	MODEL	ASS'Y. NO.	DATE
1	TLAA-25K	A549B	8-3-66

LD2127 A



MARK TMC PT. NO. W/LATEST REV. LETTER

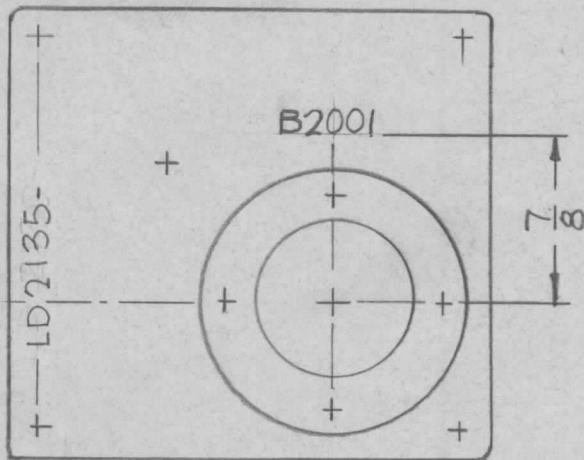
MARK TMC PT. NO. W/LATEST REV. LETTER

REF: MS4952-

REQ.	ITEM	PART NO.	F. BUDETTI	DESCRIPTION	SYMBOL	
A	ADDED R2006	8/28/69 19560	KD	FB		
Ø	ORIGINAL RELEASE PRODUCTION	11/16/66	Ø	RME		
X	EXP. RELEASE	8-3-66	X			
SYM	DESCRIPTION	DATE	CH. NO.	DRAFTS	CHECKER	ENG. APP.
UNLESS OTHERWISE SPECIFIED DIMENSIONS ARE IN INCHES AND INCLUDE CHEMICALLY APPLIED OR PLATED FINISHES		SCALE 1:2				
DECIMALS .X ± .05 .XX ± .01 .XXX ± .005	TOLERANCES	FRACTIONS ± 1/64 ANGLES ± 0° 30'	CODE A			
TYPE & TEMPER		HEAT TREAT. SPEC.	DRAWN	CHECKED	FINAL APPROVAL	
FINISH & SPEC. NO.		ELEC. DES. APP.	MECH. DES. APP.	LD2127 A		

REQ. PER UNIT	USED ON			LD 2135 \emptyset
	MODEL	ASS'Y. NO.	DATE	
1	TLAA-2.5K	BMA 126	8-3-66	

MARK TMC P/N
 $\frac{1}{8}$ HIGH GOTHIC
W/LATEST REV.
LETTER.



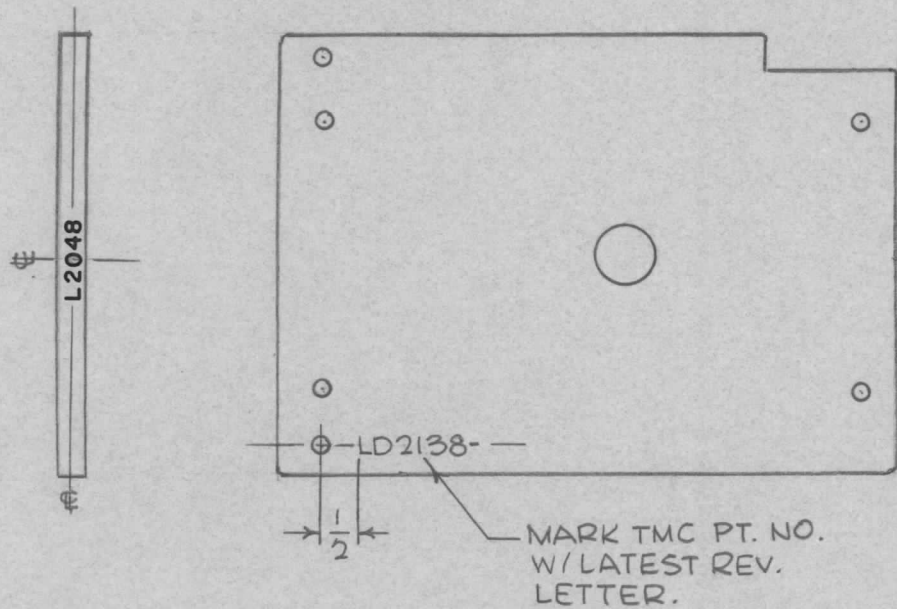
MARKING PROCESS: AS PER TMC SPECIFICATION S-727.

LETTERING: 1/8 HIGH BLACK GOTHIC, LOCATED AS SHOWN.

REF: PM1304-

REQ. ITEM	PART NO.	F. BUDETTI	DESCRIPTION	SYMBOL							
\emptyset			THE TECHNICAL MATERIEL CORP. MAMARONECK, NEW YORK								
X			MARKING, PLATE, BEARING								
SYM	DESCRIPTION	DATE	CH. NO.	DRAFTS	CHECKER	ENG. APP.	MATERIAL				
	UNLESS OTHERWISE SPECIFIED DIMENSIONS ARE IN INCHES AND INCLUDE CHEMICALLY APPLIED OR PLATED FINISHES	SCALE	1:1								
DECIMALS .X \pm .05 .XX \pm .01 .XXX \pm .005	TOLERANCES	FRACTIONS \pm 1/64 ANGLES \pm 0° 30'	CODE A								
							TYPE & TEMPER	HEAT TREAT. SPEC.	DRAWN	CHECKED	FINAL APPROVAL
											LD 2135 \emptyset
							FINISH & SPEC. NO.		ELEC. DES. APP.	MECH. DES. APP.	

REQ. PER UNIT	USED ON			LD2138	Ø
	MODEL	ASS'Y. NO.	DATE		
1	TLAA-2.5K	AS128	8-16-66		



MARKING PROCESS: AS PER TMC SPECIFICATION S-727.
 LETTERING: 1/8 HIGH BLACK GOTHIC, LOCATED AS SHOWN.

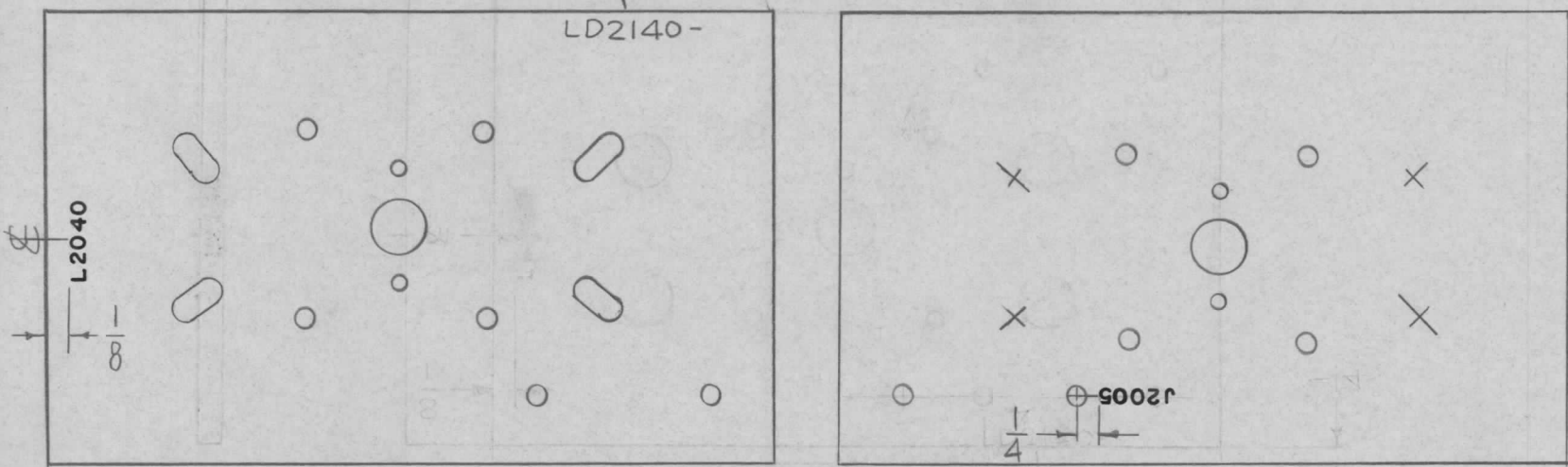
REF: PX991

REQ. ITEM	PART NO.	BUDETTI	DESCRIPTION	SYMBOL
Ø	ORIGINAL RELEASE FOR PRODUCTION	11/15/66	Ø RME	
XI	TMC PT. NO. ADDED	11-8-66	VM Jc	
X	EXP RELEASE	8-16-66	X JBC	ØB
SYM	DESCRIPTION	DATE	CH. NO.	DRAFTS
UNLESS OTHERWISE SPECIFIED DIMENSIONS ARE IN INCHES AND INCLUDE CHEMICALLY APPLIED OR PLATED FINISHES		SCALE	1:2	
DECIMALS .X ± .05 .XX ± .01 .XXX ± .005	TOLERANCES	FRACTIONS ± 1/64 ANGLES ± 0° 30'	CODE	
TYPE & TEMPER		HEAT TREAT. SPEC.	J.B.C.	ØB
FINISH & SPEC. NO.		ELEC. DES. APP.	MECH. DES. APP.	LD2138 Ø

MARK TMC P/N
 1/8 HIGH GOTHIC W/LATEST
 REV. LETTER.

REQ. PER UNIT	USED ON		
	MODEL	ASS'Y. NO.	DATE
1	TLAA-2.5K	AS128	8-16-66

LD2140 Ø



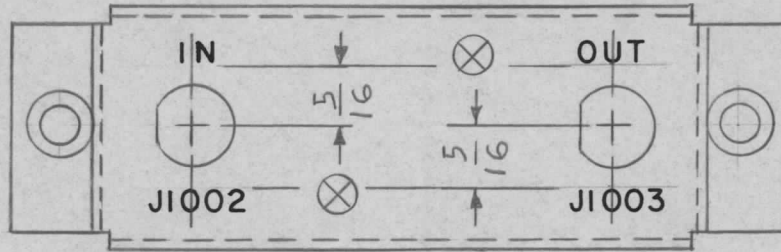
MARKING PROCESS: AS PER TMC SPECIFICATION S-727.
 LETTERING: 1/8 HIGH BLACK GOTHIC, LOCATED AS SHOWN.

MARK TMC PT. NO.
 W/LATEST REV.
 LETTER.

REF: PM1316

Ø	ORIGINAL RELEASE FOR PRODUCTION	11-16-66	Ø	RME			REQ. ITEM	PART NO.	BUDETTI	DESCRIPTION	SYMBOL	
X2	12005 ADDED	11-15-66		RME					THE TECHNICAL MATERIEL CORP. MAMARONECK, NEW YORK			
X1	TMC PT. NO. ADDED	11-8-66	VM	Jc				STOCK SIZE	MARKING, PLATE, SWITCH			
X	EXP RELEASE	8-16-66	X	J.B.C.				MATERIAL				
SYM	DESCRIPTION	DATE	CH. NO.	DRAFTS	CHECKER	ENG. APP.			J.B.C.	JCB	Ø J.B.C.	
UNLESS OTHERWISE SPECIFIED DIMENSIONS ARE IN INCHES AND INCLUDE CHEMICALLY APPLIED OR PLATED FINISHES		SCALE					1:2					
DECIMALS	FRACTIONS	CODE										
.X ± .05	± 1/64	A										
.XX ± .01	ANGLES											
.XXX ± .005	± 0° 30'											
								TYPE & TEMPER	HEAT TREAT. SPEC.	DRAWN	CHECKED	FINAL APPROVAL
										Ø		LD2140 Ø
								FINISH & SPEC. NO.	ELEC. DES. APP.	MECH. DES. APP.		

REQ. PER UNIT	USED ON			LD2148	Ø
	MODEL	ASS'Y. NO.	DATE		
1	AP125		8-22-66		



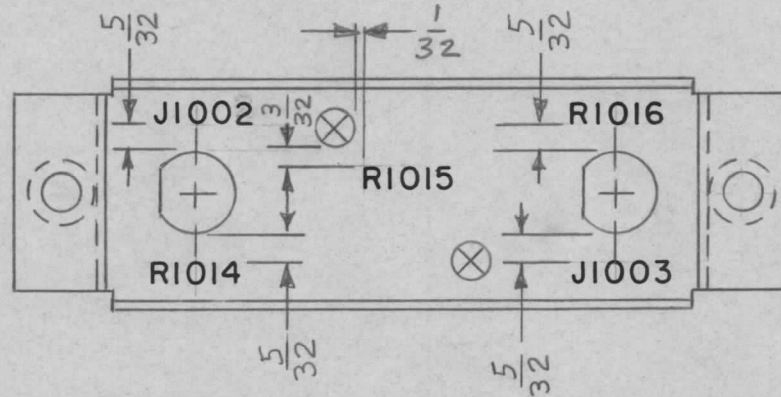
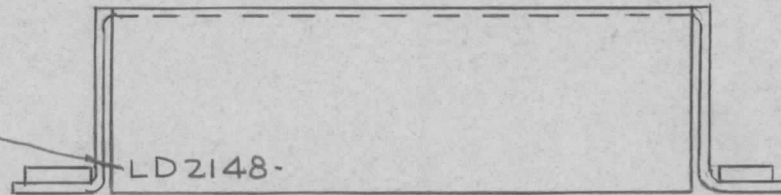
MARKING PROCESS:

AS PER TMC SPECIFICATION S-727.

LETTERING:

1/8 HIGH BLACK GOTHIC, LOCATED AS SHOWN.

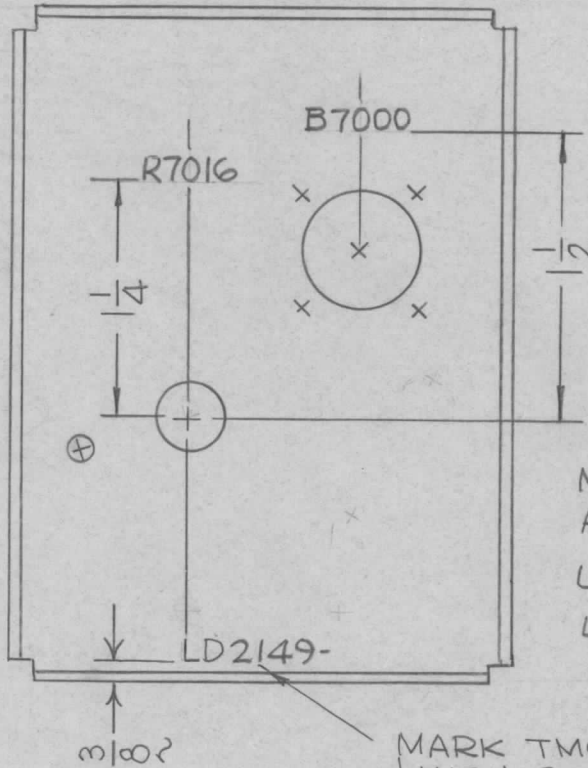
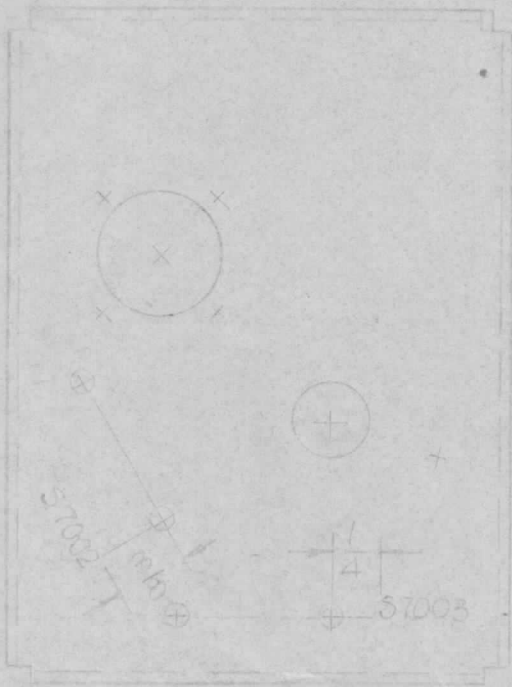
MARK TMC P/N
1/8 HIGH GOTHIC
W/LATEST REV.
LETTER.



REF: MS-1927(1)

						REQ. ITEM	PART NO.	F-BUDETTI	DESCRIPTION	SYMBOL
									THE TECHNICAL MATERIEL CORP. MAMARONECK, NEW YORK	
							STOCK SIZE		MARKING, ATTENUATOR.	
Ø	ORIGINAL RELEASE FOR PRODUCTION	8-22-66	X	JBC					CHASSIS	
SYM	DESCRIPTION	DATE	CH. NO.	DRAFTS	CHECKER	ENG. APP.	MATERIAL			
UNLESS OTHERWISE SPECIFIED DIMENSIONS ARE IN INCHES AND INCLUDE CHEMICALLY APPLIED OR PLATED FINISHES		SCALE						JBC 8-22-66	<i>JBC</i>	<i>OB/Man</i>
DECIMALS .X ± .05 .XX ± .01 .XXX ± .005	TOLERANCES	FRACTIONS ± 1/64 ANGLES ± 0° 30'	CODE A					TYPE & TEMPER	HEAT TREAT. SPEC.	DRAWN <i>Pat</i>
								FINISH & SPEC. NO.	ELEC. DES. APP.	MECH. DES. APP.
										LD2148
										Ø

REQ. PER UNIT	USED ON			LD2149	Ø
	MODEL	ASS'Y. NO.	DATE		
1	SWCA-3K	BMA125	8-23-66		



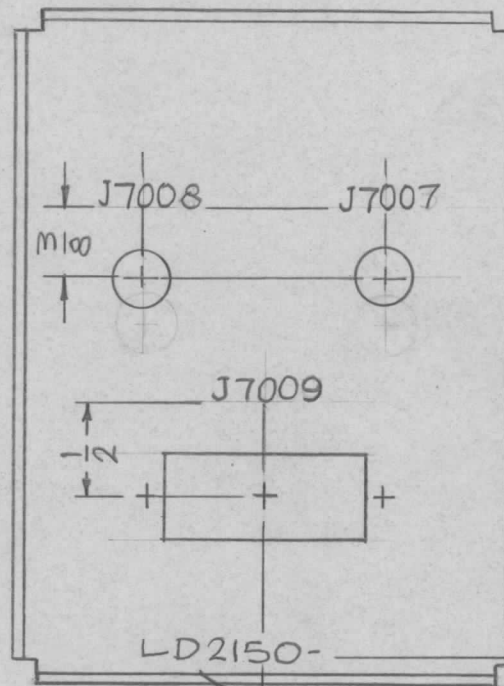
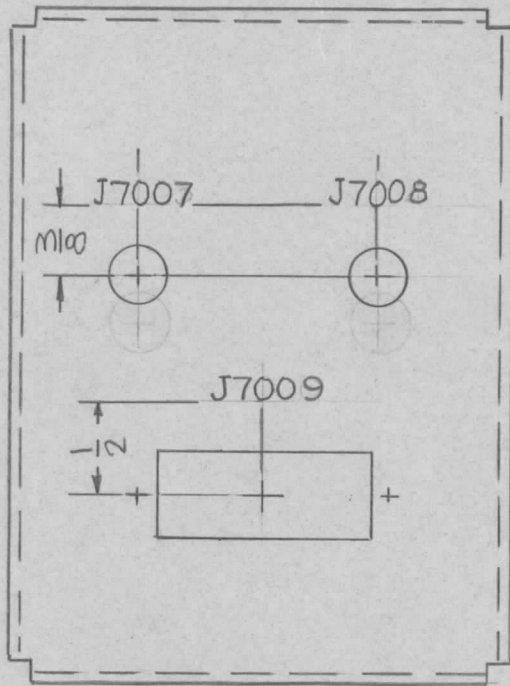
MARKING PROCESS:
AS PER TMC SPEC. S727.
LETTERING: $\frac{1}{8}$ HIGH BLK GOTHIC
LOCATED AS SHOWN,

MARK TMC P/N
 $\frac{1}{8}$ HIGH GOTHIC
W/LATEST REV.
LETTER.

REF: MS 5046

Ø	ORIGINAL RELEASE FOR PRODUCTION	12/2/66	Ø	CV			REQ. ITEM	PART NO.	F. BUDETTI	DESCRIPTION	SYMBOL	
X2	ADD LOC DIM FOR TMC PT. NO.	11/30/66	VAA	Jc						THE TECHNICAL MATERIEL CORP. MAMARONECK, NEW YORK		
X1	S7002-S7003 DELETED	11-18-66	X1	MS	MS						MARKING, PLATE FRONT	
X	EXP. RELEASE	8-23-66	X	MS	MS						AS PER TMC SPEC. S727	
SYM	DESCRIPTION	DATE	CH. NO.	DRAFTS	CHECKER	ENG. APP.	MATERIAL					
UNLESS OTHERWISE SPECIFIED DIMENSIONS ARE IN INCHES AND INCLUDE CHEMICALLY APPLIED OR PLATED FINISHES		SCALE		1:1			TYPE & TEMPER		HEAT TREAT. SPEC.	DRAWN	CHECKED	FINAL APPROVAL
DECIMALS .X ± .05 .XX ± .01 .XXX ± .005	TOLERANCES	FRACTIONS ± 1/64 ANGLES ± 0° 30'	CODE	A			FINISH & SPEC. NO.		ELEC. DES. APP.	MECH. DES. APP.	LD2149	Ø

REQ. PER UNIT	USED ON			LD2150 \emptyset
	MODEL	ASS'Y. NO.	DATE	
1	SWCA-3K	BMA149	8-23-66	



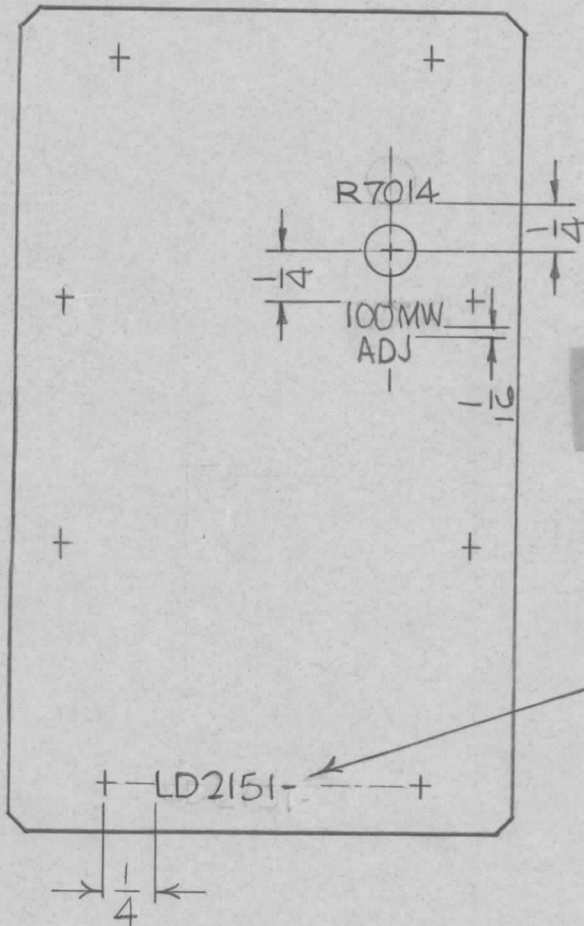
MARKING PROCESS;
AS PER TMC SPEC.
S727.
LETTERING: $\frac{1}{8}$ HIGH, BLK
GOTHIC LOCATED
AS SHOWN.

MARK TMC P/N
 $\frac{1}{8}$ HIGH GOTHIC
W/LATEST REV.
LETTER.

REF: MS5044

\emptyset	ORIGINAL RELEASE FOR PRODUCTION	11-22-66	\emptyset	RME			REQ. ITEM	PART NO.	F. BUDETTI	DESCRIPTION	SYMBOL
X2	$\frac{3}{8}$ DIM. ADD TO TMC PT. NO.	11-19-66	M	Jc						THE TECHNICAL MATERIEL CORP. MAMARONECK, NEW YORK	
X1	SYMBOLS REVISED	8-25-66	X1				STOCK SIZE				MARKING, PLATE REAR
X	EXP. RELEASE	8-23-66	X				MATERIAL			AS PER TMC SPEC S727	
SYM	DESCRIPTION	DATE	CH. NO.	DRAFTS	CHECKER	ENG. APP.					
UNLESS OTHERWISE SPECIFIED DIMENSIONS ARE IN INCHES AND INCLUDE CHEMICALLY APPLIED OR PLATED FINISHES						SCALE					
						1:1					
DECIMALS .X \pm .05 .XX \pm .01 .XXX \pm .005	TOLERANCES	FRACTIONS \pm 1/64 ANGLES \pm 0° 30'	CODE A				TYPE & TEMPER	HEAT TREAT. SPEC.	DRAWN	CHECKED	FINAL APPROVAL
							FINISH & SPEC. NO.	ELEC. DES. APP.	MECH. DES. APP.	LD2150 \emptyset	

REQ. PER UNIT	USED ON			LD2151	Ø
	MODEL	ASS'Y. NO.	DATE		
1	SWCA-3K	BMA149	8-23-66		



MARKING PROCESS: AS PER TMC SPECIFICATION S-727.
 LETTERING: 1/8 HIGH BLACK GOTHIC, LOCATED AS SHOWN.

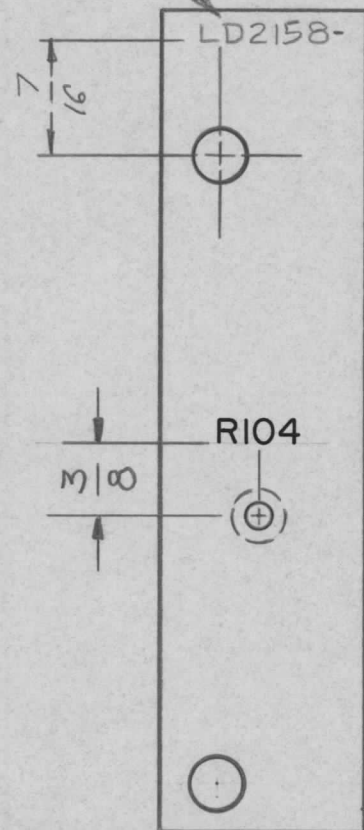
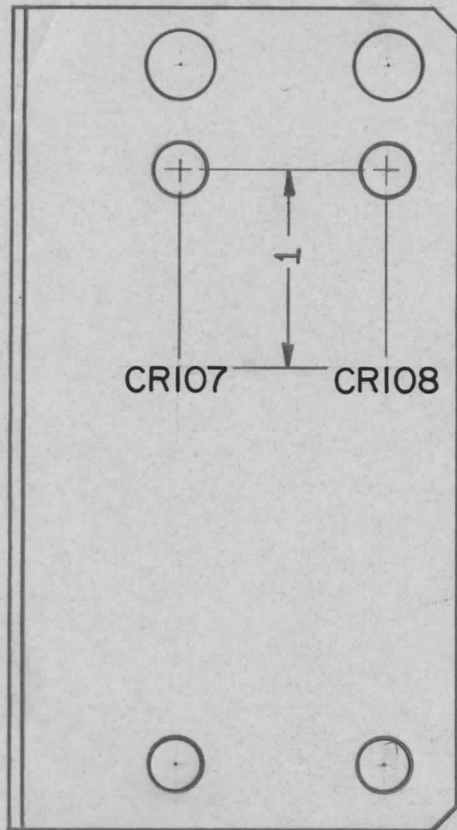
MARK TMC P/N
 1/8 HIGH GOTHIC
 W/LATEST REV.
 LETTER.

REF: MS 5047

							REQ. ITEM	PART NO.	F. BUDETTI	DESCRIPTION	SYMBOL	
Ø	ORIGINAL RELEASE FOR PRODUCTION	11/22/66	Ø	CV					THE TECHNICAL MATERIEL CORP. MAMARONECK, NEW YORK			
X	EXP. RELEASE	8-23-66	X	SKZ					MARKING, PLATE, COVER AS PER TMC SPEC. S727			
SYM	DESCRIPTION	DATE	CH. NO.	DRAFTS	CHECKER	ENG. APP.	MATERIAL					
UNLESS OTHERWISE SPECIFIED DIMENSIONS ARE IN INCHES AND INCLUDE CHEMICALLY APPLIED OR PLATED FINISHES		SCALE 1:1										
DECIMALS .X ± .05 .XX ± .01 .XXX ± .005	TOLERANCES	FRACTIONS ± 1/64 ANGLES ± 0° 30'	CODE A				TYPE & TEMPER	HEAT TREAT. SPEC.	DRAWN	CHECKED	FINAL APPROVAL	
							FINISH & SPEC. NO.	ELEC. DES. APP.	MECH. DES. APP.	LD2151	Ø	

MARK TMC P/N 1/8 HIGH GOTHIC
W/LATEST REV. LETTER

REQ. PER UNIT	USED ON			LD2158	Ø
	MODEL	ASS'Y. NO.	DATE		
1	PSP350C		9/2/66		



NOTE:
1) LETTERING 1/8 HIGH BLACK GOTHIC
PER TMC SPEC S-727

MARKING PROCESS: AS PER TMC SPECIFICATION S-727.

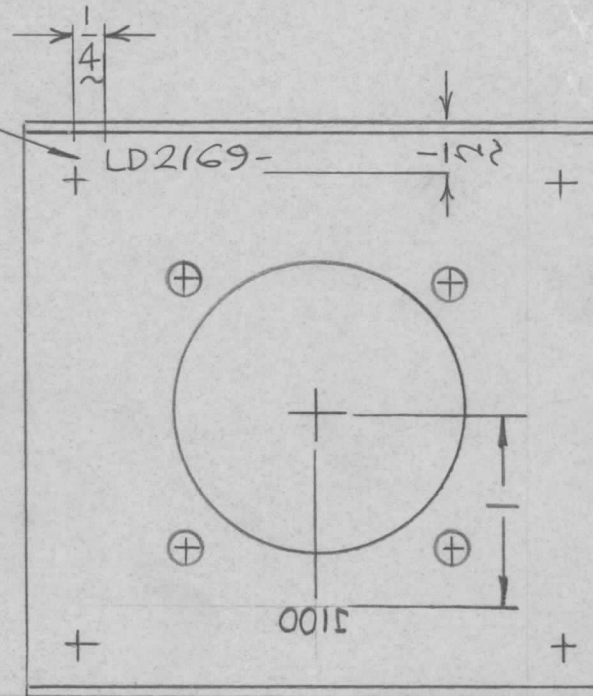
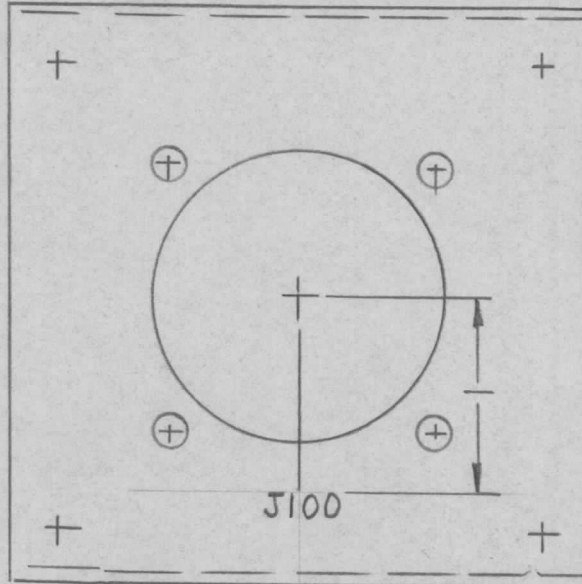
LETTERING: 1/8 HIGH BLACK GOTHIC, LOCATED AS SHOWN.

REF: MS 5072

SYM	DESCRIPTION	DATE	CH. NO.	DRAFTS	CHECKER	ENG. APP.	REQ. ITEM	PART NO.	BUTLER DESCRIPTION	SYMBOL		
Ø	ORIGINAL RELEASE FOR PRODUCTION	3-20-67		L.R.K.					THE TECHNICAL MATERIEL CORP. MAMARONECK, NEW YORK	MARKING PLATE, MOUNTING, RECTIFIER		
X	EXPERIMENTAL RELEASE	9/2/66	X	CEB								
UNLESS OTHERWISE SPECIFIED DIMENSIONS ARE IN INCHES AND INCLUDE CHEMICALLY APPLIED OR PLATED FINISHES							SCALE					
							1:1					
DECIMALS .X ± .05 .XX ± .01 .XXX ± .005		FRACTIONS ± 1/64 ANGLES ± 0° 30'		TOLERANCES		CODE						
							TYPE & TEMPER		HEAT TREAT. SPEC.		DRAWN	
									CHECKED		FINAL APPROVAL	
							FINISH & SPEC. NO.		ELEC. DES. APP.		MECH. DES. APP.	
											LD2158 Ø	

MARK TMC P/N
 1/8 HIGH GOTHIC W/LATEST
 REV. LETTER.

REQ. PER UNIT	USED ON			LD2169	Ø
	MODEL	ASS'Y. NO.	DATE		
1	AX-631		9-15-66		



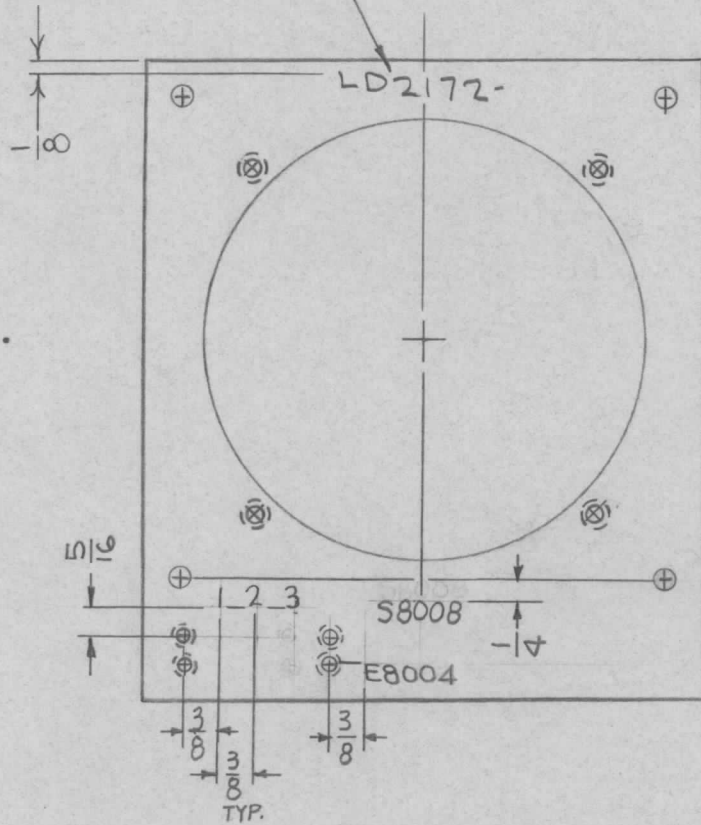
MARKING PROCESS: AS PER TMC SPECIFICATION S-727.
 LETTERING: 1/8 HIGH BLACK GOTHIC, LOCATED AS SHOWN.

REF: MS5091

REQ. ITEM	PART NO.	F. BUDETTI			DESCRIPTION	SYMBOL
Ø		ORIGINAL RELEASE FOR PRODUCTION			1/11/67	Ø CV
X		EXP. RELEASE			9-15-66	X [Signature]
SYM	DESCRIPTION	DATE	CH. NO.	DRAFTS	CHECKER	ENG. APP.
UNLESS OTHERWISE SPECIFIED DIMENSIONS ARE IN INCHES AND INCLUDE CHEMICALLY APPLIED OR PLATED FINISHES		SCALE 1:1				
DECIMALS .X ± .05 .XX ± .01 .XXX ± .005	TOLERANCES	FRACTIONS ± 1/64 ANGLES ± 0° 30'	CODE A			
				TYPE & TEMPER	HEAT TREAT. SPEC.	DRAWN [Signature]
						CHECKED [Signature]
						FINAL APPROVAL [Signature]
				FINISH & SPEC. NO.	ELEC. DES. APP.	MECH. DES. APP.
						LD2169 Ø

REQ. PER UNIT	USED ON			LD2172	Q
	MODEL	ASS'Y. NO.	DATE		
1	RAK-110-2	BMA15Z	9-19-66		

MARK TMC P/N
 $\frac{1}{8}$ HIGH GOTHIC
W/LATEST REV.
LETTER.

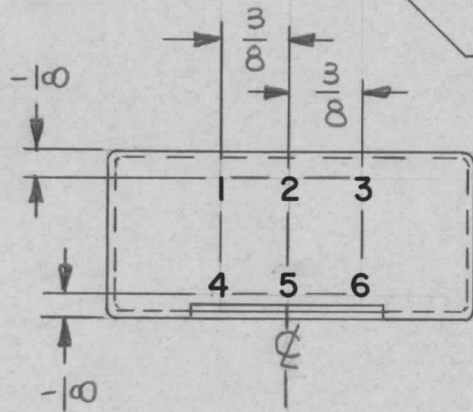
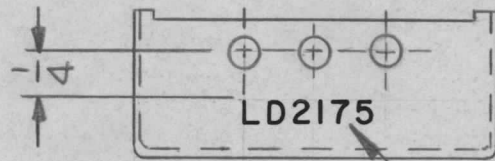


MARKING PROCESS: AS PER TMC SPECIFICATION S-727.
LETTERING: 1/8 HIGH BLACK GOTHIC, LOCATED AS SHOWN.

REF: MS 5096

Q	ORIGINAL RELEASE FOR PRODUCTION	12.1.66	At	W/W			REQ. ITEM	PART NO.	F. BUDETTI	DESCRIPTION	SYMBOL
XI	LOCATING DIM ADD TO TMC PT. NO	11-21-66	At	Jc			STOCK SIZE		THE TECHNICAL MATERIEL CORP. MAMARONECK, NEW YORK		
X	EXP. RELEASE	9-19-66	X	PKA		@B	MATERIAL		MARKING, PLATE AIR BAFFLE AS PER TMC SPEC. S-727		
SYM	DESCRIPTION	DATE	CH. NO.	DRAFTS	CHECKER	ENG. APP.	TYPE & TEMPER		DRAWN	CHECKED	FINAL APPROVAL
UNLESS OTHERWISE SPECIFIED DIMENSIONS ARE IN INCHES AND INCLUDE CHEMICALLY APPLIED OR PLATED FINISHES		SCALE					HEAT TREAT. SPEC.		PKA	JCB	@B
DECIMALS .X ± .05 .XX ± .01 .XXX ± .005	TOLERANCES	FRACTIONS ± 1/64 ANGLES ± 0° 30'	CODE A				FINISH & SPEC. NO.		PKA 11/21/66	PKA	LD2172
									ELEC. DES. APP.	MECH. DES. APP.	Q

REQ. PER UNIT	USED ON			LD2175 \emptyset
	MODEL	ASS'Y. NO.	DATE	
1	TF351	A4498	9/26/66	



MARK TMC PT. NO. W/LATEST REV. LETTER

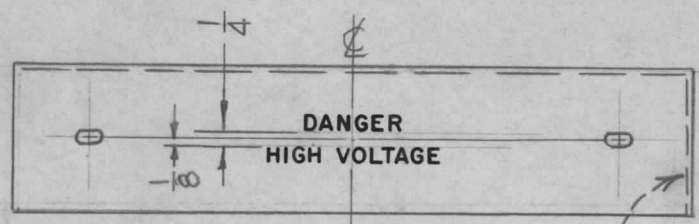
- UNLESS OTHERWISE SPECIFIED -

- 1- MARKING PROCESS: AS PER TMC SPECIFICATION S-727.
- 2- LETTERING: 1/8 HIGH WHITE GOTHIC, LOCATED AS SHOWN.

REF. PX993

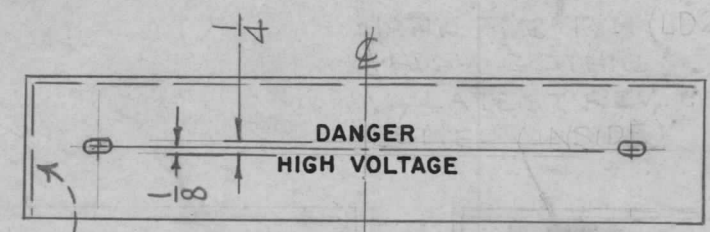
REQ.	ITEM	PART NO.	POSE	DESCRIPTION	SYMBOL
\emptyset	ORIGINAL RELEASE	10/5/66	\emptyset		JL
X	EXP. RELEASE	9/26/66	JL		
UNLESS OTHERWISE SPECIFIED DIMENSIONS ARE IN INCHES AND INCLUDE CHEMICALLY APPLIED OR PLATED FINISHES			SCALE	1/1	
DECIMALS	TOLERANCES	FRACTIONS	CODE		
.X \pm .05		\pm 1/64			
.XX \pm .01		ANGLES			
.XXX \pm .005		\pm 0° 30'			
THE TECHNICAL MATERIEL CORP. MAMARONECK, NEW YORK			MARKING - CASE		
MATERIAL			J. L.	JCB	MMA
TYPE & TEMPER	HEAT TREAT. SPEC.	DRAWN	CHECKED	FINAL APPROVAL	
FINISH & SPEC. NO.			ELEC. DES. APP.	MECH. DES. APP.	LD2175 \emptyset

REQ. PER UNIT	USED ON			LD2181	Ø
	MODEL	ASS'Y. NO.	DATE		
1	40KEF		11-22-66		
1	10KEF				



VIEW - A

SEE TMC NO. MARKING NOTE



VIEW - B

SEE TMC NO. MARKING NOTE

NOTE:
MARK TMC P/NO. LD2181- -
1/8 HIGH GOTHIC W/LATEST
REV. LETTER. (INSIDE)

TMC P/N	REF.	VIEW
LD2181-1	PX 973-1	A
LD2181-2	PX 973-2	A
LD2181-3	PX 973-3	B

MARKING PROCESS: AS PER TMC SPECIFICATION S-727.
LETTERING: 1/2 HIGH RED GOTHIC, LOCATED AS SHOWN.

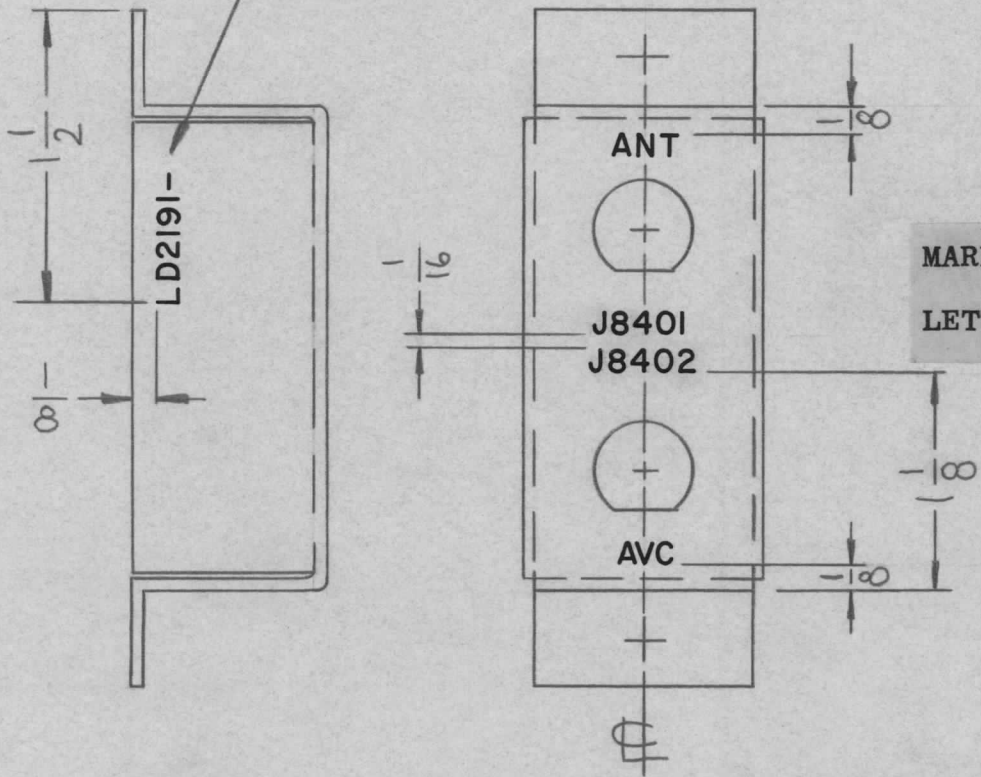
REF: PX 973-1 & 2 & 3

SYM	DESCRIPTION	DATE	CH. NO.	DRAFTS	CHECKER	ENG. APP.	REQ. ITEM	PART NO.	F. BUDETTI DESCRIPTION	SYMBOL
Ø	ORIGINAL RELEASE FOR PRODUCTION	3-20-67		L.A.K.					THE TECHNICAL MATERIEL CORP. MAMARONECK, NEW YORK MARKING COVER PROTECT XFMR AS PER TMC SPEC. S727	
X2	PICTORIAL REVISED	3-14-67	X2	<i>[Signature]</i>		<i>[Signature]</i>				
X1	LD2181-3. ADDED	1-25-67	X1	<i>[Signature]</i>		<i>[Signature]</i>				
X	EXP. RELEASE	11-22-66	X	<i>[Signature]</i>	<i>[Signature]</i>	<i>[Signature]</i>				
UNLESS OTHERWISE SPECIFIED DIMENSIONS ARE IN INCHES AND INCLUDE CHEMICALLY APPLIED OR PLATED FINISHES							SCALE 1:4			
DECIMALS .X ± .05 .XX ± .01 .XXX ± .005		FRACTIONS ± 1/64 ANGLES ± 0° 30'		TOLERANCES		CODE A	FINISH & SPEC. NO.		ELEC. DES. APP.	MECH. DES. APP.
									DRAWN <i>[Signature]</i> CHECKED <i>[Signature]</i> FINAL APPROVAL <i>[Signature]</i>	
									LD2181 Ø	

REQ. PER UNIT	USED ON		
	MODEL	ASS'Y. NO.	DATE
1	DDR-7J1		11-21-66
1	DDR-7L		11-21-66

LD2191 Ø

MARK TMC PART/No.
1/8" HIGH GOTHIC W/LATEST REVISION LETTER



UNLESS OTHERWISE SPECIFIED:
MARKING PROCESS: AS PER TMC SPECIFICATION S-727.
LETTERING: 1/8" HIGH BLACK GOTHIC, LOCATED AS SHOWN.

REF: MSG035

REQ.	ITEM	PART NO.	DESCRIPTION				SYMBOL	
		//	THE TECHNICAL MATERIEL CORP. MAMARONECK, NEW YORK					
		//	LETTERING-CHASSIS, OUTPUT					
		//	MATERIAL					
Ø			ORIGINAL RELEASE FOR PRODUCTION	2/2/66	Ø	CV		
SYM			DESCRIPTION	DATE	CH. NO.	DRAFTS	CHECKER	ENG. APP.
UNLESS OTHERWISE SPECIFIED DIMENSIONS ARE IN INCHES AND INCLUDE CHEMICALLY APPLIED OR PLATED FINISHES			SCALE					
DECIMALS .X ± .05 .XX ± .01 .XXX ± .005	TOLERANCES		FRACTIONS ± 1/64 ANGLES ± 0° 30'	CODE				
	TYPE & TEMPER	HEAT TREAT. SPEC.	DRAWN	CHECKED	FINAL APPROVAL			
	FINISH & SPEC. NO.		ELEC. DES. APP.	MECH. DES. APP.	LD2191 Ø			

