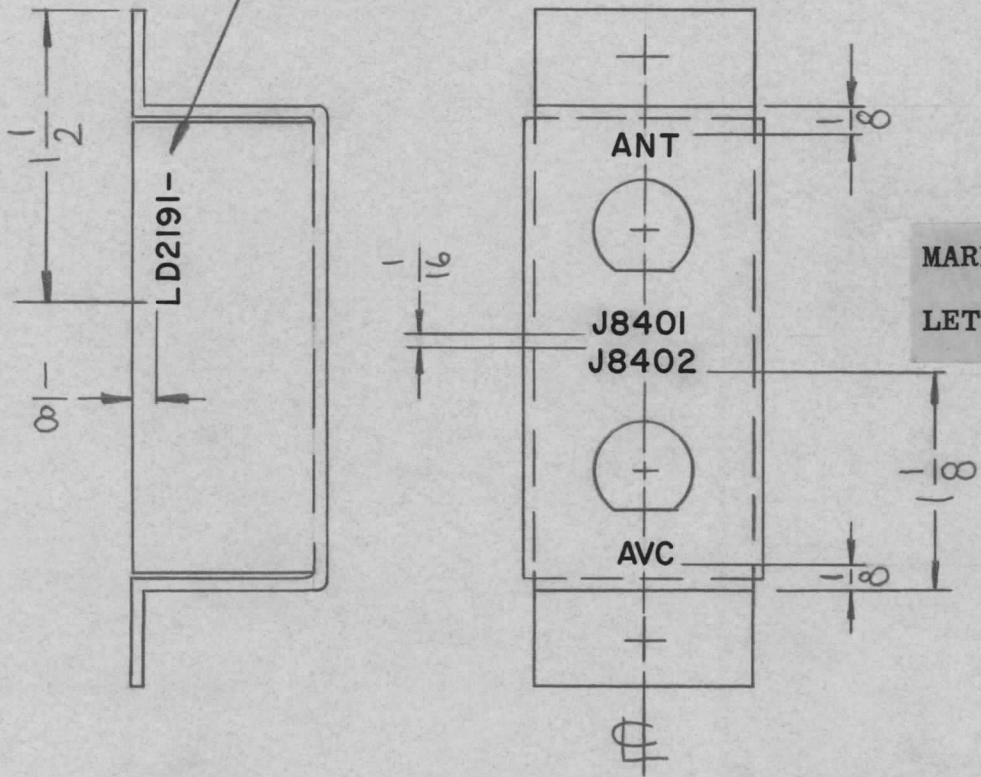


REQ. PER UNIT	USED ON		
	MODEL	ASS'Y. NO.	DATE
1	DDR-7J1		11-21-66
1	DDR-7L		11-21-66

LD2191 Ø

MARK TMC PART/No.  
 $\frac{1}{8}$ " HIGH GOTHIC W/LATEST REVISION LETTER



UNLESS OTHERWISE SPECIFIED:  
 MARKING PROCESS: AS PER TMC SPECIFICATION S-727.  
 LETTERING: 1/8 HIGH BLACK GOTHIC, LOCATED AS SHOWN.

REF: MSG035

REQ.	ITEM	PART NO.	DESCRIPTION				SYMBOL
		//	THE TECHNICAL MATERIEL CORP. MAMARONECK, NEW YORK				
		//	LETTERING-CHASSIS, OUTPUT				
Ø			ORIGINAL RELEASE FOR PRODUCTION	2/2/66	Ø	CV	
SYM	DESCRIPTION	DATE	CH. NO.	DRAFTS	CHECKER	ENG. APP.	MATERIAL
UNLESS OTHERWISE SPECIFIED DIMENSIONS ARE IN INCHES AND INCLUDE CHEMICALLY APPLIED OR PLATED FINISHES			SCALE				
DECIMALS .X ± .05 .XX ± .01 .XXX ± .005		FRACTIONS ± 1/64 ANGLES ± 0° 30'		TOLERANCES		CODE	
TYPE & TEMPER		HEAT TREAT. SPEC.		DRAWN		CHECKED	FINAL APPROVAL
FINISH & SPEC. NO.		ELEC. DES. APP.		MECH. DES. APP.		LD2191	Ø