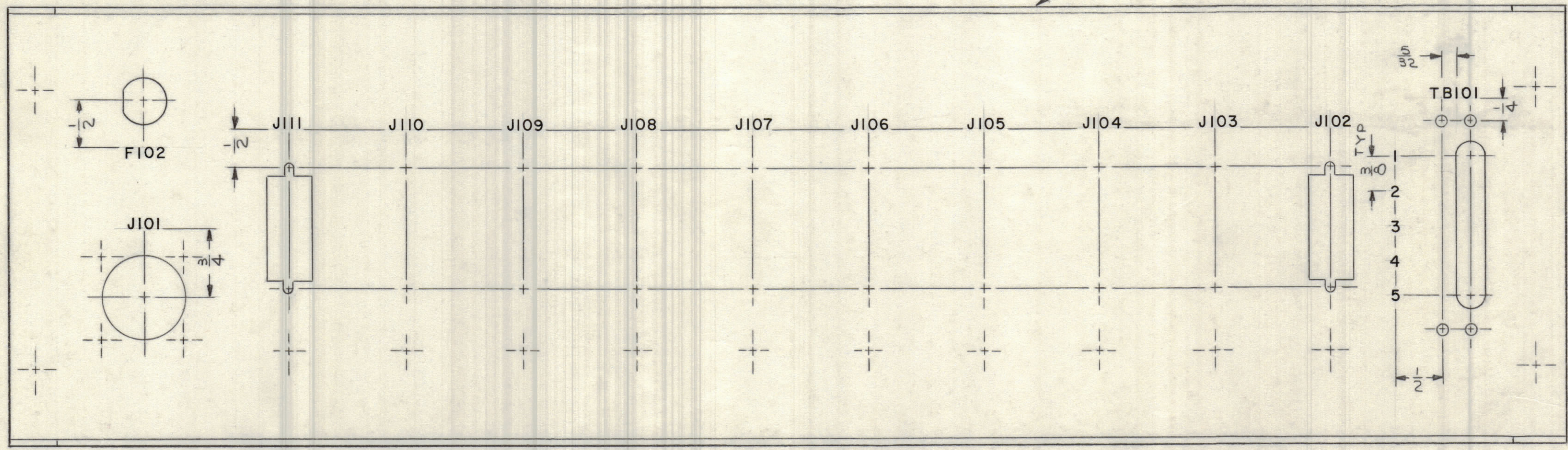


REVISIONS							
SYM	ZONE	DESCRIPTION	DATE	E.M.N. NO.	DRAFT	CHKD	APPD
X		EXP. RELEASE	11/15/66		JL		
Ø		ORIGINAL RELEASE FOR PRODUCTION	12-19-66		RME		

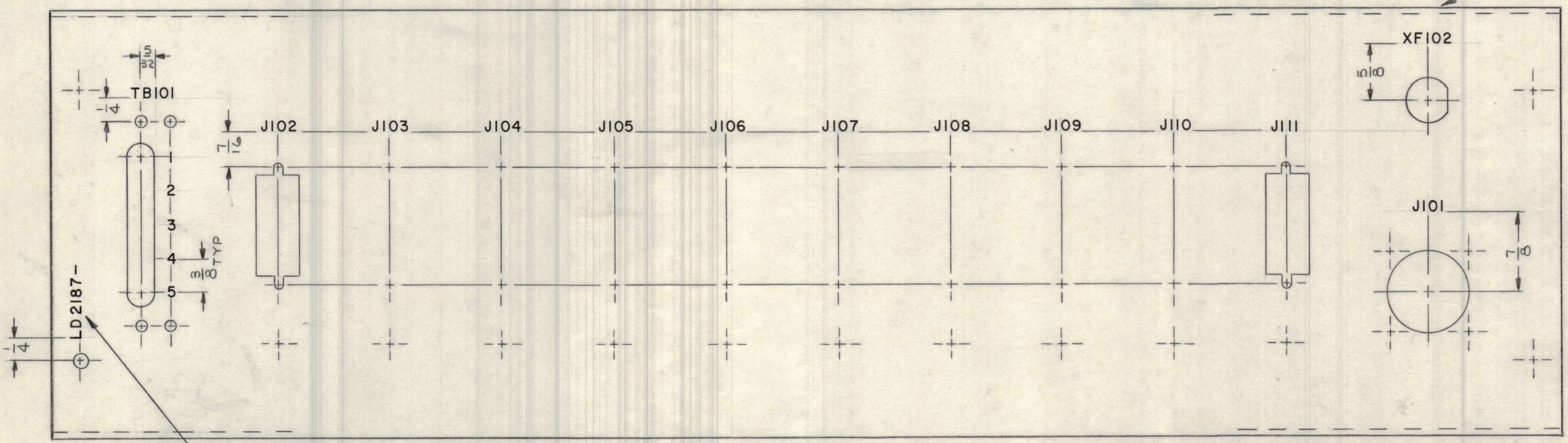
- REAR VIEW -

TOP



- FRONT VIEW -

TOP



MARK TMC PT. NO. W/LATEST REV. LETTER

- UNLESS OTHERWISE SPECIFIED -

- 1- MARKING PROCESS: AS PER TMC SPECIFICATION S-727.
- 2- LETTERING: 1/8 HIGH BLACK GOTHIC, LOCATED AS SHOWN.

MAXIMUM ALLOWABLE TOLERANCES HAVE BEEN DETERMINED AND ANY DEVIATIONS WILL BE CAUSE FOR REJECTION.

REF. MSG 6026

QTY REQ	ITEM	PART NO.	DESCRIPTION	SYMBOL	
	L. BUTLER		BILL OF MATERIAL		
FINAL APPROVAL		DATE	THE TECHNICAL MATERIEL CORP. MAMARONECK, NEW YORK		
MECH. DES.		DATE			
ELECT. DES.		DATE			
CHECKED		DATE	MARKING - PLATE, REAR (KMCI-1)		
DRAWN		DATE			
MATERIAL					
FINISH					
		CODE	SIZE	DWG. NO.	ISSUE
		82679	C	LD 2187	Ø
		SCALE 1/1			SHEET OF