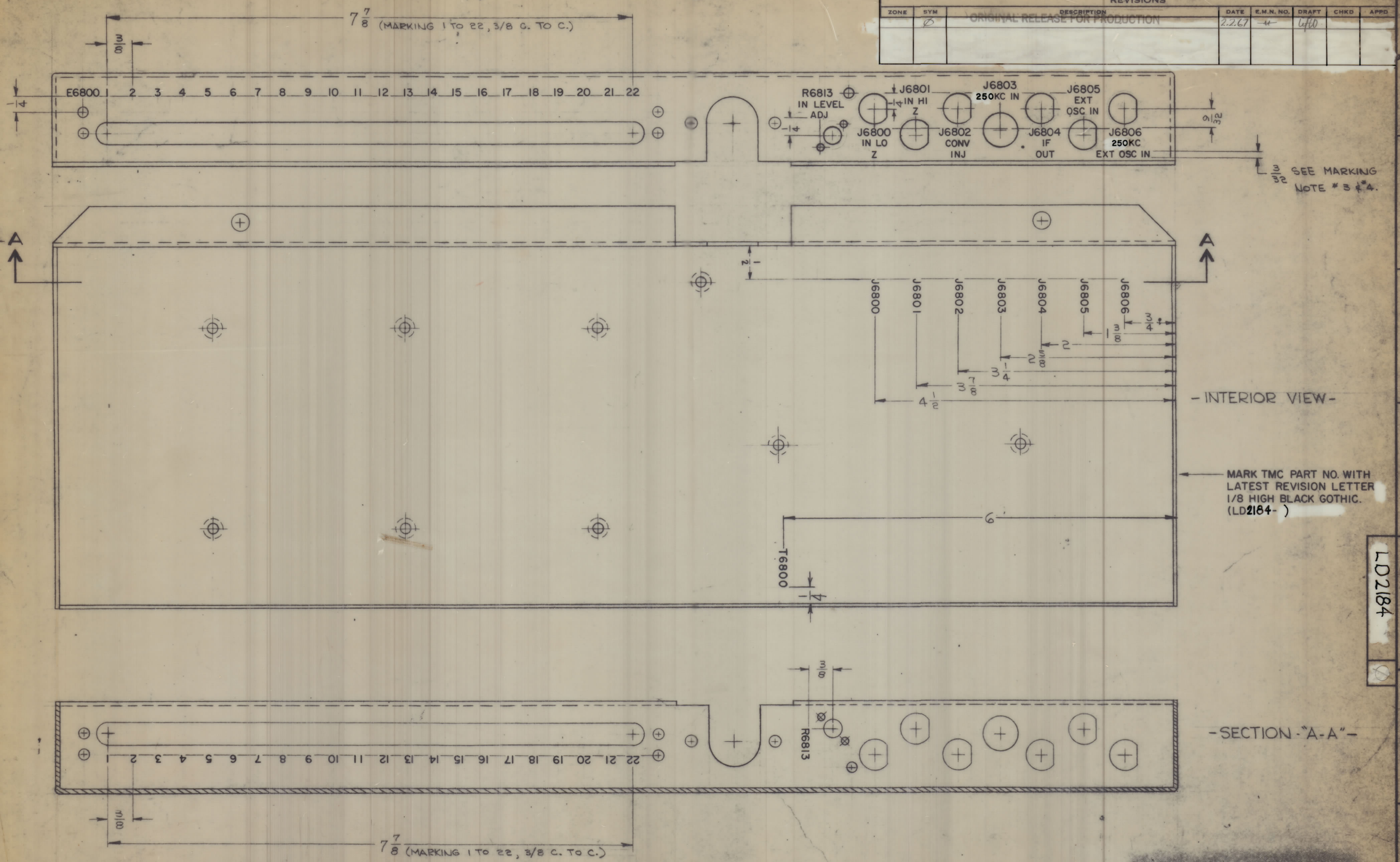


ZONE		SYM	DESCRIPTION	DATE	E.M.N. NO.	DRAFT	CHKD	APPD
		Ø	ORIGINAL RELEASE FOR PRODUCTION	2.2.67		4	4	



SEE MARKING NOTE # 3 & 4.

- INTERIOR VIEW -

MARK TMC PART NO. WITH LATEST REVISION LETTER 1/8 HIGH BLACK GOTHIC. (LD2184-)

- SECTION "A-A" -

- UNLESS OTHERWISE SPECIFIED:**
- MARKING PROCESS: AS PER TMC SPECIFICATION S-727.
 - LETTERING: 1/8 HIGH BLACK GOTHIC, LOCATED AS SHOWN.
 - SPACING BETWEEN ALL LETTER GROUPS TO BE 1/16.
 - ON SYMBOLS R6813, J6800 THRU J6806 DESCRIPTIONS TO BE 3/32 HIGH BLACK GOTHIC.
 - ALL LETTERING GROUPS TO BE CENTERED ON HOLES, CUTOUTS & INDICATING LINES.

NOTES

I		SBS-9		ASSEMBLY NO.	
QTY/UNIT	MODEL USED ON	CODE	ASSEMBLY NO.	DATE	DATE
SCALE		A			
THE CONTENTS OF THIS DRAWING ARE THE EXCLUSIVE PROPERTY OF THE TECHNICAL MATERIEL CORP. ITS UNAUTHORIZED USE OR REPRODUCTION IN WHOLE OR IN PART IS STRICTLY PROHIBITED.					

REF: MS 3786 (8)

REQ. D.	ITEM	PART NUMBER	DESCRIPTION	SYMBOL
LIST OF MATERIAL				
MATERIAL			THE TECHNICAL MATERIEL CORP.	
FINISH			MAMARONECK, NEW YORK	
TITLE			MARKING, APRON, REAR	
MARKING PROCESS-PER TMC SPEC. S-727			DATE: 10.21.66	
UNLESS OTHERWISE SPECIFIED DIMENSIONS ARE IN INCHES AND INCLUDE CHEMICALLY APPLIED OR PLATED FINISHES			DATE: 10.21.66	
TOLERANCES			DATE: 10.21.66	
DECIMALS			DATE: 10.21.66	
FRACTIONS			DATE: 10.21.66	
X ± .05			DATE: 10.21.66	
XX ± .01			DATE: 10.21.66	
XXX ± .005			DATE: 10.21.66	
ANGLE			DATE: 10.21.66	
± 0° 30'			DATE: 10.21.66	

LD2184

LD2184

M.L.P.B.