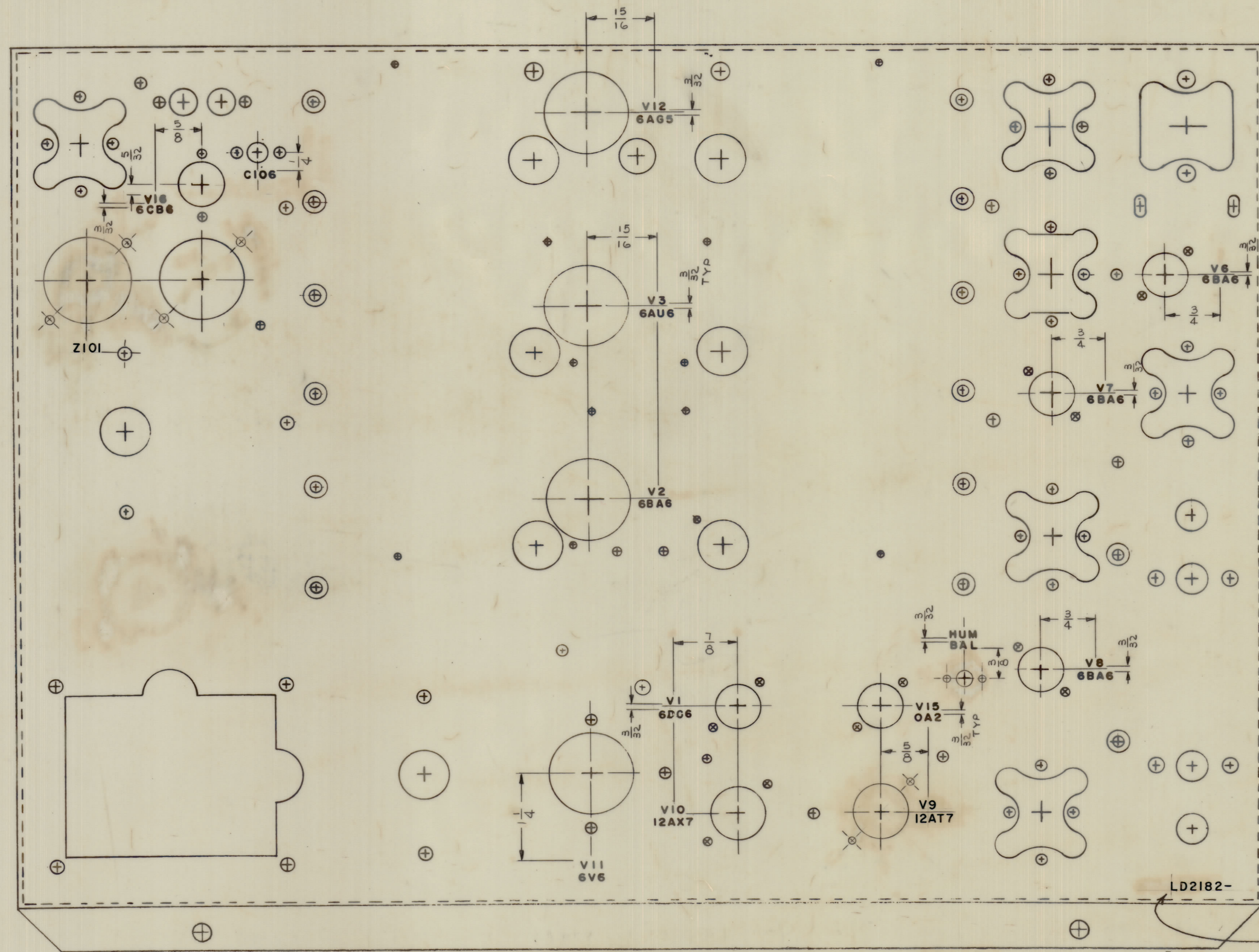


IF IT IS FOUND DESIRABLE TO CHANGE ANY TOLERANCE OR OTHER DETAIL SPECIFIED ON THIS DRAWING NOTIFY THE PURCHASER PROMPTLY.
 MAXIMUM ALLOWABLE TOLERANCES HAVE BEEN DETERMINED AND DEVIATIONS WILL BE CAUSE FOR REJECTION. REMOVE ALL SURFS AND SHARP EDGES

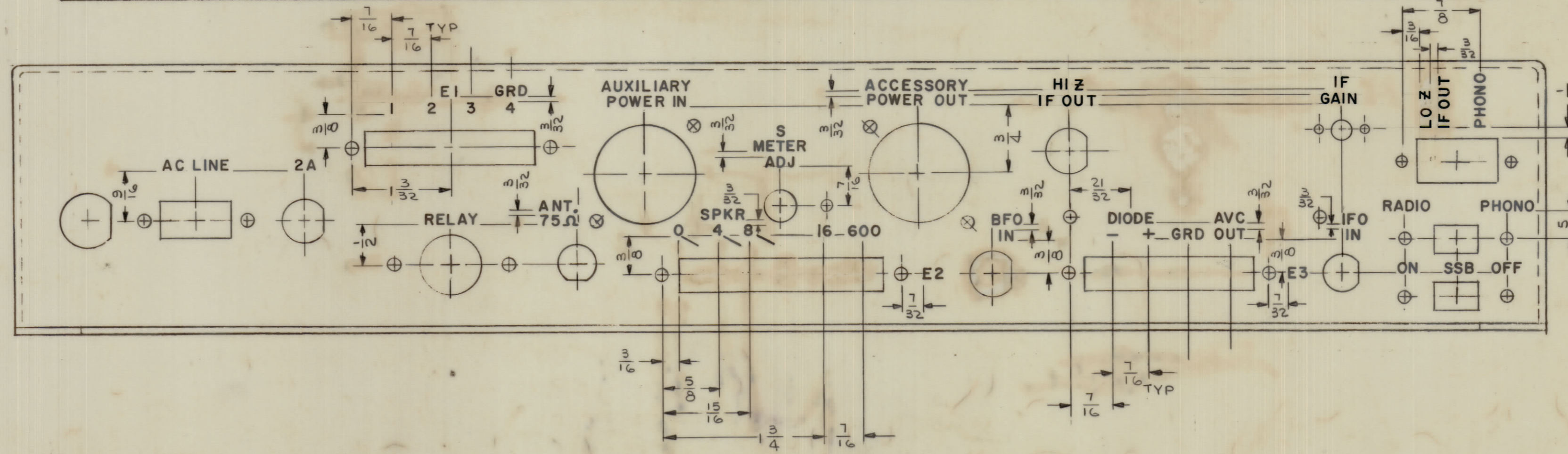
NOTICE TO PERSONS RECEIVING THIS DRAWING
 THE TECHNICAL MATERIEL CORPORATION claims proprietary right in the material disclosed hereon. This drawing is issued in confidence for engineering information only and may not be reproduced or used to manufacture any item shown hereon without permission from THE TECHNICAL MATERIEL CORPORATION to the user. This drawing is loaned for mutual assistance and is subject to recall at any time.
 Property of:
 THE TECHNICAL MATERIEL CORPORATION
 MAMARONECK, NEW YORK



FRONT
 TOP OF CHASSIS
 REAR

- UNLESS OTHERWISE SPECIFIED -
 LETTERING TO BE 1/8" HIGH GOTHIC, BLACK
 LOCATED AS SHOWN
 MARKING PROCESS: AS PER TMC SPECIFICATION S-727

MARK TMC PART NO.
 1/8 HIGH GOTHIC
 WITH LATEST REVISION
 LETTER.



TOP
 REAR OF CHASSIS
 BOTTOM

ORIGINAL RELEASE FOR PRODUCTION	11/16/64	RME	JL
EXP. RELEASE	12/2/64	JL	
DATE	CH NO	DRAFTS	CHECKER (ENG APP)
TOLERANCES	SCALE		
DRILL PUNCH COMMERCIAL BOOK	SIZES / 40 MANUFACTURERS		
TOLERANCES ARE NOT INCLUDED			

REQ PER UNIT	MODEL	PROJECT NO.	ASBY. NO.	DATE
	GPR-90RIDS			
		USED ON		

REQ. ITEM	PART NO.	DESCRIPTION	SYMBOL
THE TECHNICAL MATERIEL CORP. MAMARONECK, NEW YORK			
MARKING - CHASSIS, ELEC-MAIN			
STOCK SIZE			
MATERIAL	WEIGHT PER PC		
TYPE & TEMPER	JL		
DRAWN	ELEC. DES. APP.	MCH. DES. APP.	
HEAT TREAT. SPEC.	CHECKED	FINAL APPROVAL	
FINISH & SPEC. NO.			

LD2182