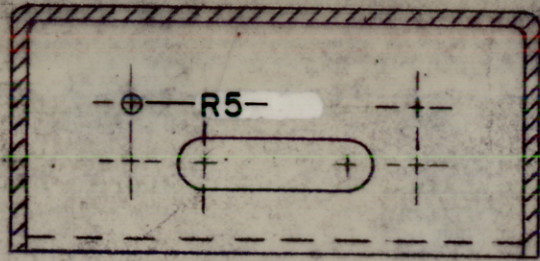
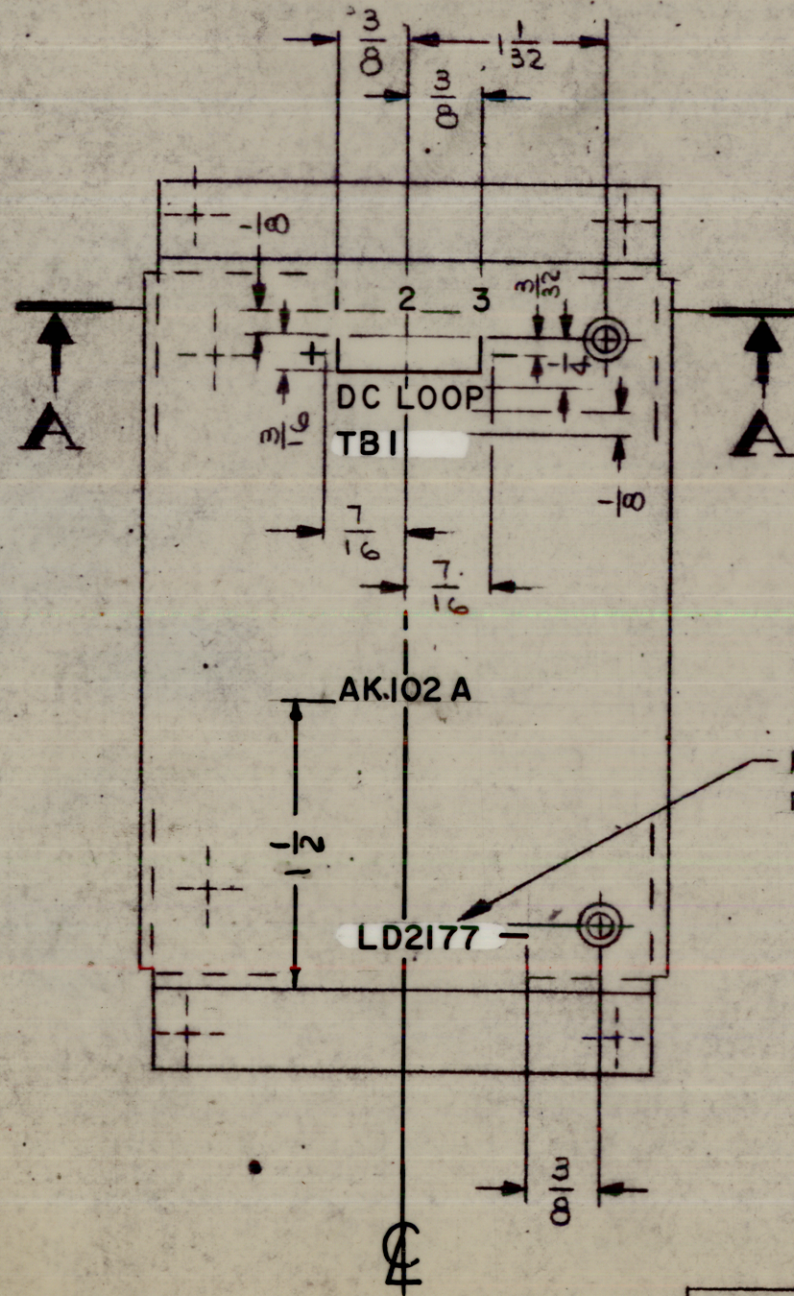


VIEW A-A



LD2177

REVISIONS					
SYM	DESCRIPTION	DATE	E.M.N. NO.	DRAFT	CHKD APPD
X	EXPERIMENTAL RELEASE	9-28-66	X	RME	<i>J. De</i>
Ø	ORIGINAL RELEASE FOR PRODUCTION	1-9-67	—	WFW	<i>J. De</i>



MARK TMC PT. NO. W/LATEST REV. LETTER

UNLESS OTHERWISE SPECIFIED:

MARKING PROCESS: AS PER TMC SPECIFICATION S-727.

LETTERING: 1/8 HIGH BLACK GOTHIC, LOCATED AS SHOWN.

REF. MS4843

REQ'D.	ITEM	PART NUMBER	DESCRIPTION	SYMBOL
FE. EATON LIST OF MATERIAL				
MATERIAL		THE TECHNICAL MATERIEL CORP.		
FINISH		MAMARONECK, NEW YORK		
		TITLE		
		MARKING-CHASSIS, ELECTRICAL (AUXILIARY KEYS)		
UNLESS OTHERWISE SPECIFIED		DRAWN	DATE	FINAL APPROVAL
DIMENSIONS ARE IN INCHES AND INCLUDE CHEMICALLY APPLIED OR PLATED FINISHES		CHECKED	DATE	<i>J. De</i> 1/9/67
DECIMALS .X ± .05		ELECT. DES.	DATE	LD2177
.XX ± .01		MECH. DES.	DATE	Ø
.XXX ± .005		SHEET		REV. LTR.

QTY./UNIT	MODEL USED ON	ASS'Y. NO.
SCALE 1/1	RTIH-1	AK102-A
THE CONTENTS OF THIS DRAWING ARE THE EXCLUSIVE PROPERTY OF THE TECHNICAL MATERIEL CORP. ITS UNAUTHORIZED USE OR REPRODUCTION IN WHOLE OR IN PART IS STRICTLY FORBIDDEN.		

NOTES