

7

6

5

4

3

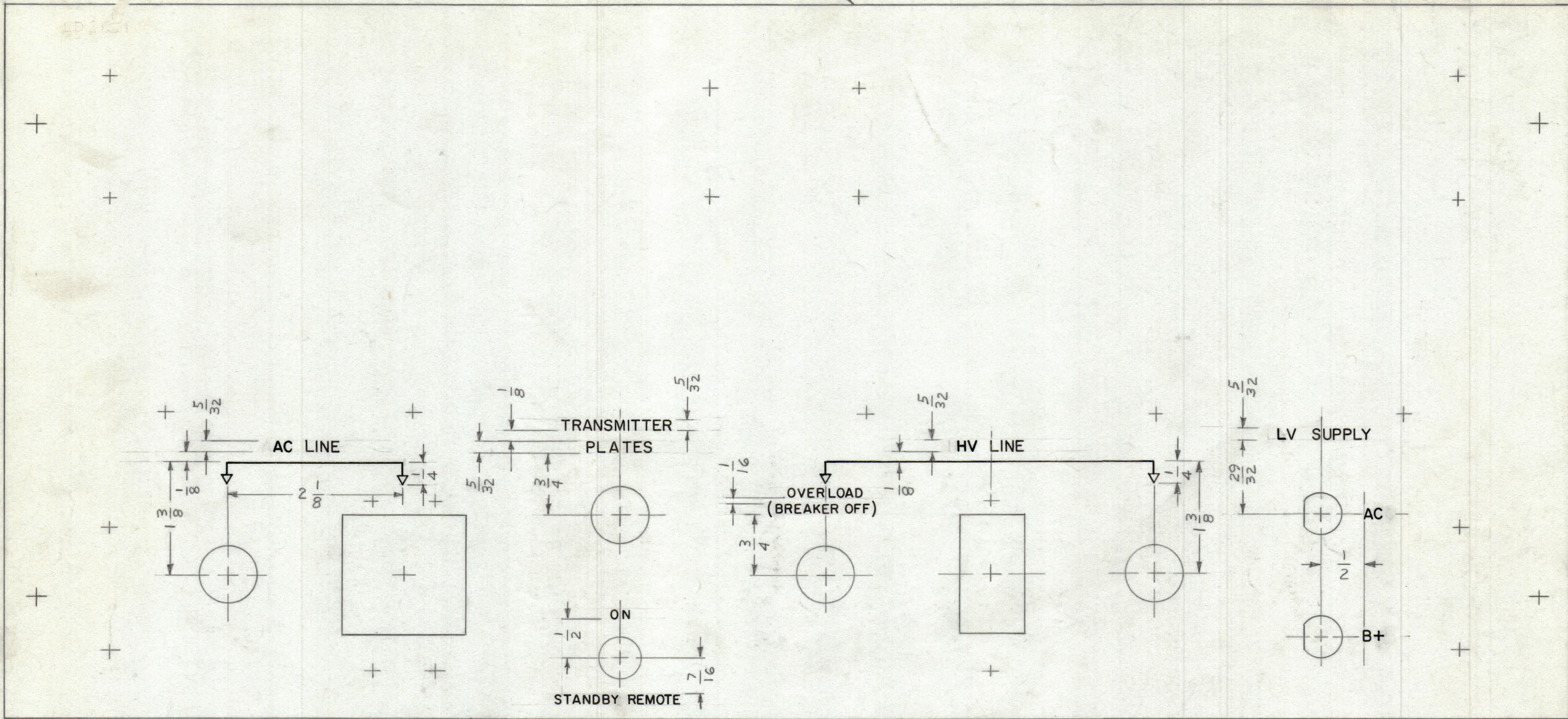
2

1

MARK TMC F/N 1/8 HIGH GOTHIC
W/1/16 ST. REV. LETTER

TOP OF PANEL

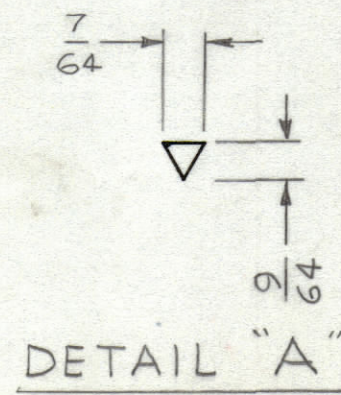
REVISIONS							
ZONE	SYM	DESCRIPTION	DATE	E.M.N. NO.	DRAFT	CHKD	APPD
	X	EXP. RELEASE	9-9-66	X	JBC		
	XI	LV, HV, AC & B+ RELOCATED	3/20/67				
	Ø	ORIGINAL RELEASE FOR PRODUCTION	3/20/67	Ø	CV		



FRONT OF PANEL SHOWN

- UNLESS OTHERWISE SPECIFIED:
1. ALL LETTERS TO BE 1/8 HIGH, WHITE GOTHIC.
 2. ALL LETTERING TO BE CENTERED ON HOLES, CUTOUTS OR INDICATING LINES.
 3. ENGRAVING TO BE IN ACCORDANCE WITH TMC SPEC. S566 (SEE CHART).
 4. ALL ARROWHEADS TO BE WHITE OUTLINE. (SEE DETAIL "A").

HEIGHT OF LETTERS	DEPTH OF STROKE	WIDTH OF STROKE
5/32	.010	.020
1/8	.010	.020
DOTS	.010	1/16 DIA
LINES	.010	.015
ARROHEADS	.010	~



REF: MS5075

5. ENGI

REQ'D.	ITEM	PART NUMBER	DESCRIPTION	SYMBOL
LIST OF MATERIAL				
MATERIAL			THE TECHNICAL MATERIEL CORP. MAMARONECK, NEW YORK	
FINISH			TITLE MARKING, FRONT PANEL	
UNLESS OTHERWISE SPECIFIED DIMENSIONS ARE IN INCHES AND INCLUDE CHEMICALLY APPLIED OR PLATED FINISHES			DRAWN JBC	DATE 9-9-66
			CHECKED JBC	DATE 3/20/67
			ELECT. DES.	DATE
			MECH. DES.	DATE
			SHEET 1 OF 2	
			REV. LTR.	

1	PSP350-C	
Q'TY./UNIT	MODEL USED ON	ASS'Y. NO.
SCALE 1:1	CODE	

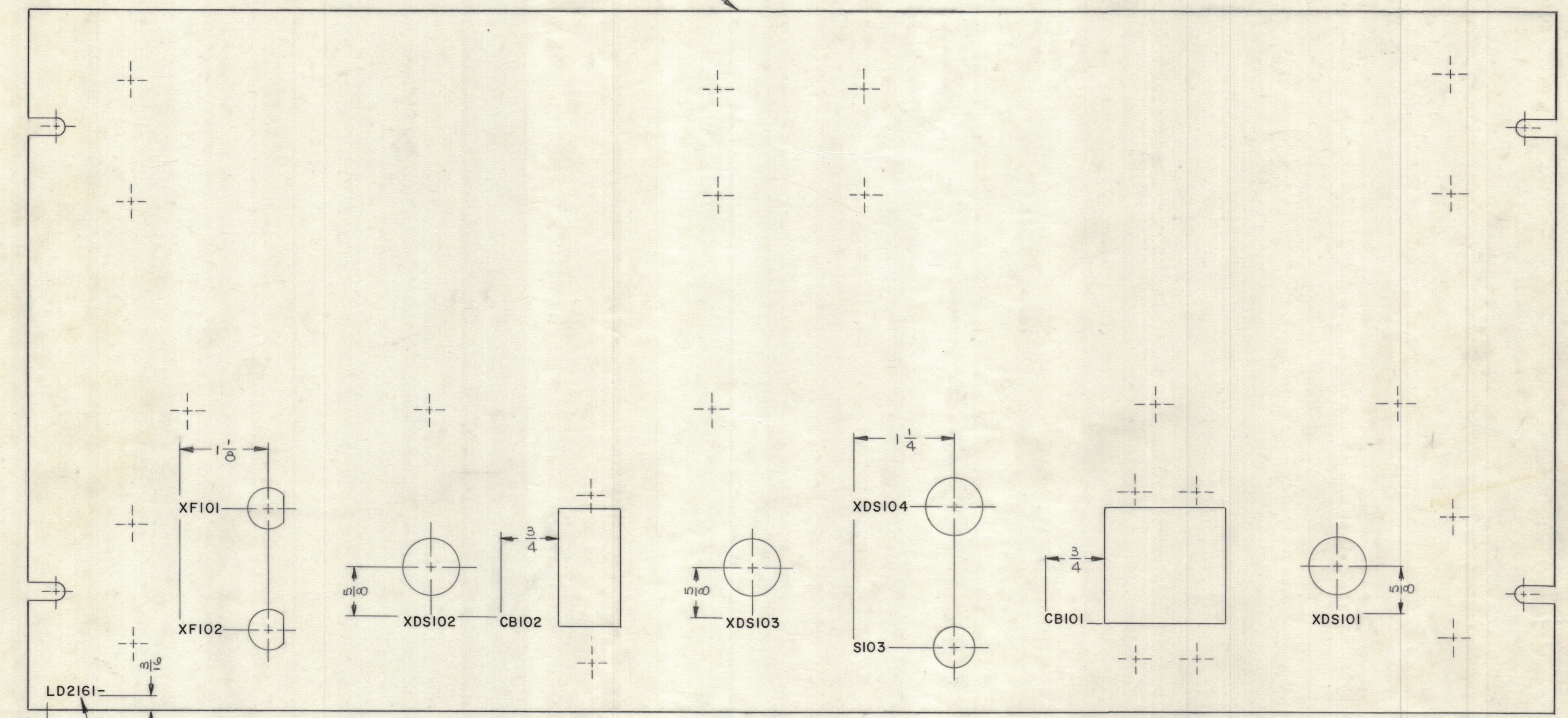
THE CONTENTS OF THIS DRAWING ARE THE EXCLUSIVE PROPERTY OF THE TECHNICAL MATERIEL CORP. ITS UNAUTHORIZED USE OR REPRODUCTION IN WHOLE OR IN PART IS STRICTLY FORBIDDEN.

NOTES

LD2161

REVISIONS						
SYM	ZONE	DESCRIPTION	DATE	E.M.N.O.	DRAFT	CHKD APPD
X		EXP. RELEASE	9/22/66		JL	
XI		SEE SHEET 1	3/21/67		JL	JL
Ø		ORIGINAL RELEASE FOR PRODUCTION	3/20/67	Ø	CV	

TOP OF PANEL



-REAR VIEW-

MARK TMC PT. NO. W/LATEST REVISION LETTER

- UNLESS OTHERWISE SPECIFIED -
- 1- MARKING PROCESS: AS PER TMC SPECIFICATION S-727.
 - 2- LETTERING: 1/8 HIGH BLACK GOTHIC, LOCATED AS SHOWN.

MAXIMUM ALLOWABLE TOLERANCES HAVE BEEN DETERMINED AND ANY DEVIATIONS WILL BE CAUSE FOR REJECTION.

REF. MS5075

QTY REQ	ITEM	PART NO.	DESCRIPTION	SYMBOL
	L. BUTLER		BILL OF MATERIAL	
	UNLESS OTHERWISE SPECIFIED DIMENSIONS ARE IN INCHES TOLERANCES ON FRACTIONS DECIMALS ANGLES ±1/64 ±.005 ±1/2°	FINAL APPROVAL <i>[Signature]</i> MECH. DES. ELECT. DES. CHECKED <i>[Signature]</i> DRAWN J. LESHINSKI	DATE 3/20/67 DATE DATE DATE DATE DATE 9-22-66	THE TECHNICAL MATERIEL CORP. MAMARONECK, NEW YORK
	MATERIAL			MARKING - PANEL, FRONT (PSP-350C)
	FINISH	APPROVED FOR BUSHIPS	CONTRACT NO.	CODE 82679 SIZE C DWG. NO. LD2161 ISSUE Ø
				SCALE 1/1 SHEET 2 OF 2